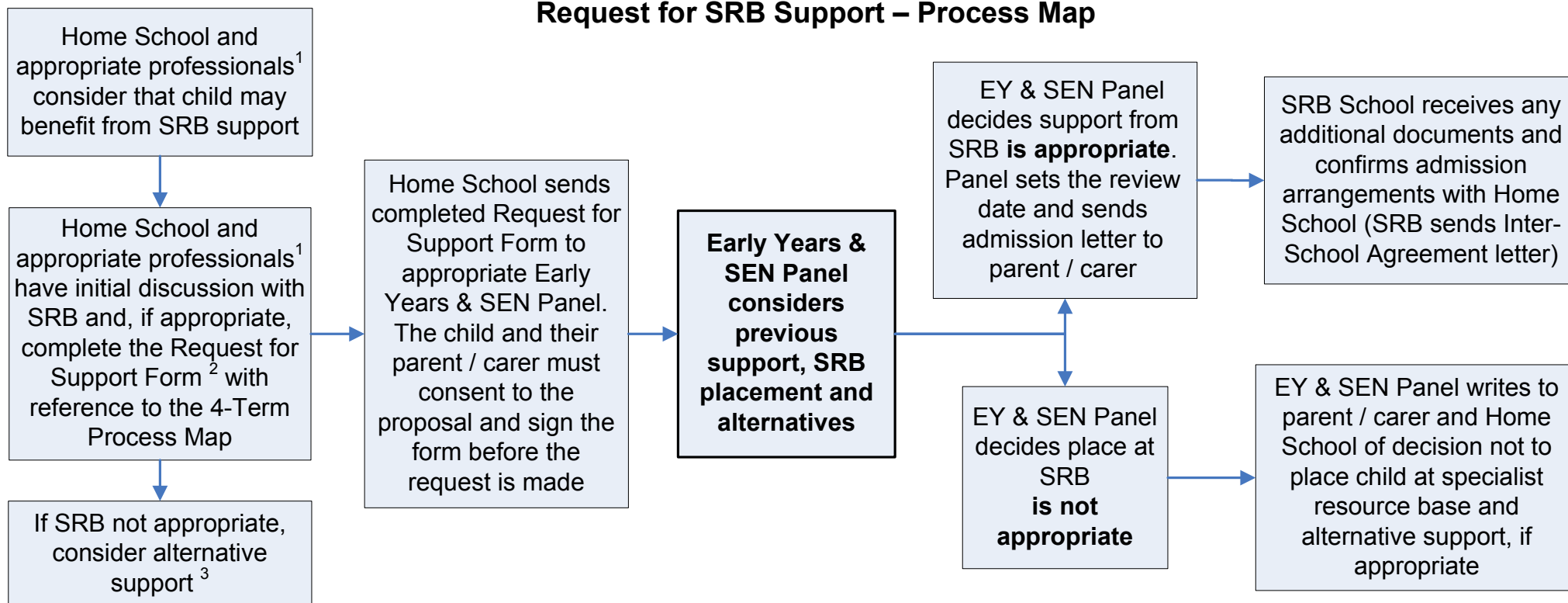


## Specialist Resource Base (SRB)

### Request for SRB Support – Process Map



#### Notes

- **This process applies to children and young people with Statements of SEN or those at School Action Plus.**
  - The Local Authority's Early Years & SEN Panel is the admissions authority for Specialist Resource Bases.
  - SRB admissions will be considered termly at the appropriate EY & SEN Panel. A member of staff from the SRB should attend all Admissions & Review agenda items at Panel meetings.
- <sup>1</sup> "Appropriate professionals" could include, but is not limited to, SEN Caseworkers, School Support Teams, Behaviour Support Teams, Speech & Language Therapists.
- <sup>2</sup> If pupils are Statemented then SEN Caseworkers need to be involved in discussions about potential SRB placements. These discussions will normally take place as part of an Annual Review. If the pupil is at School Action Plus then the School Support Team / Behaviour Support Team make the request.
- <sup>3</sup> Should the person making the request still feel that the Request should be considered by the EY & SEN Panel, the Form and any supporting documents should still be sent to the Panel.