

Fischer Family Trust

Primary Subscriptions (1 Apr 2012 – 31 Mar 2013)

FFT Live data & support can be accessed **via your LA or direct from FFT**. Please contact your LA for further details.

FFT Direct options

Basic Annual Subscription:

- Year round online access to pupil and school level data via FFT Live
- Includes all 5 FFT Live modules: SETS, Student Explorer, School Groups, Export, Development
- Full online administration
- Basic email support for FFT Live administration issues
- Access to FFT national research & new developments

Cost:

- 45p per pupil (Y1-Y11)
- Minimum cost £100
- Maximum cost £250

Premium Annual Subscription

Basic subscription *plus*

- Extended email support (data queries, report questions, 'how to use FFT Live')
- 25% reduction on training courses and FFT optional packages

Cost:

Basic Subscription cost *plus* £500

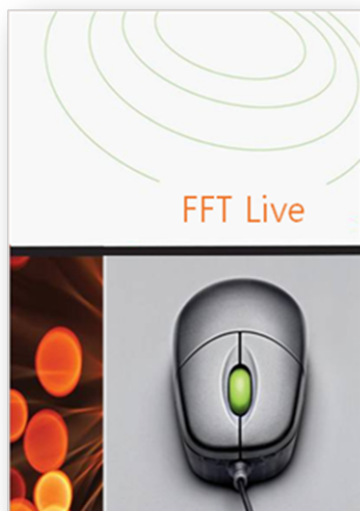
See FFT Live at www.fftlive.org

Fischer Education Project Ltd is supported by Fischer Family Trust

The Fischer Family Trust is a Registered Charity, No 1075453

The Fischer Education Project is a company limited by guarantee

FFT Live for Primary Schools



For more than ten years Fischer Family Trust has worked successfully with schools and LAs to provide a range of data to support evidence based self evaluation and effective target setting. With the vast majority of schools across England and Wales making use of FFT data, the project is at the forefront of innovation in the provision of high quality data to educators.

From April 2012, schools and Academies will have the option to access data and support from their LA or to purchase direct from FFT through a Basic or Premium annual subscription. Both subscriptions provide schools with all year round access to FFT Live, FFT's online reporting system. Whether you access data via your LA or direct from FFT, remember - because FFT process national census and examination data on behalf of the Department for Education your data is automatically updated online each term as new pupils enter and leave your school.

To find out more about FFT Live subscriptions

Visit our website: www.fischertrust.org

Email us: subscriptions@fischertrust.org

Telephone us: 01446 776262

- FFT Live is FFT's online reporting system used regularly by over 80% of schools
- Use pupil and school estimates (available from KS1 to KS5) to inform expectations for all pupils across a wide range of subjects
- Motivate pupils and recognise potential by using FFT's innovative range of estimate models - you set the level of challenge!
- Use FFT Live's comprehensive set of self evaluation reports to compare your attainment, value added or contextual value added performance to similar pupils in similar schools across the country
- Identify strengths and areas for further development across a wide range of subjects and pupil groups to support planning, intervention strategies and the assessment of impact through evidence based self evaluation
- Choose to share data online with other schools you wish to collaborate with. Supports school to school working and improvement strategies
- Identify the pupils in your school likely to make greater rates of progress, access historical pupil data and target underperformance using Student Explorer
- Export pupil data to your school MIS quickly and easily using FFT Live's export module
- Automatic access to new developments and national FFT research
- Create online accounts for all your staff in minutes.

Are you a middle school with no KS4 pupils? If so then you can access FFT Live at the Primary school subscription rate (45p per pupil, min £100, max £250)

Fischer Family Trust

SETS – Self Evaluation & Target Setting



SETS (Self Evaluation & Target Setting) is the core module in FFT Live providing schools with a suite of pupil, subject and school level reports from KS1 onwards. Based on a combination of national school census and test/TA data, the SETS module allows schools to quickly evaluate past performance, investigate potential strengths and weaknesses and estimate the future performance of individual pupils, key groups of pupils, subjects, or your whole school.

The Self Evaluation reports in FFT Live use a combination of measures - attainment, value added and contextual value added - to assess performance and allow schools to make a more 'balanced' judgement about individual pupil progress and overall school effectiveness.

For many years, schools have used FFT estimates to support and improve target setting. As FFT provides both contextualised and non-contextualised (prior attainment) models to estimate future performance, FFT Live fits seamlessly into the current education environment with greater emphasis placed on prior attainment and progress. Most importantly, FFT Live provides schools with individual pupil level estimates from KS1 right through to KS5 using probabilities (to focus on potential and risk) as well as estimated levels and grades. This combination offers a more effective all-round approach to informing expectations and target setting which is challenging, realistic and motivational.

Features

- Assess the future performance of all your pupils using FFT's system of chances, levels and grade estimates - automatically updated online each term to reflect your latest pupils.
- Motivate pupils and recognise potential by using FFT's innovative range of estimate models allowing you to set the most appropriate level of challenge (you choose the model, you choose the percentile rank!)
- Use FFT estimates to assess the risk of pupils not making 'expected' or 'good' progress and to inform where intervention strategies will have the greatest impact
- Comprehensive self evaluation using a range of techniques - compare your attainment, value added or contextual value added performance to that of similar pupils in similar schools across the country .
- Identify strengths and areas for improvement across subjects (in school variation) and pupil groups – supporting self evaluation and Ofsted preparation.

OTHER MODULES AVAILABLE IN FFT LIVE

- **Student Explorer** - Discover potential & improve intervention by exploring the history and background characteristics of pupils
- **School Groups** - Share data and work collaboratively with other schools
- **Exports** - Export data from FFT Live to your school MIS
- **Development** - Pilot the latest developments from FFT Live (e.g. KS1 estimates)

To find out more about FFT Live
Visit our website: www.fischertrust.org
Email us: subscriptions@fischertrust.org
Telephone us: 01446 776262



Primary Subscriptions (1 Apr 2012 – 31 Mar 2013)

FFT Live data & support can be accessed **via your LA** or **direct from FFT**. Please contact your LA for further details.

FFT Direct options

Basic Annual Subscription:

- Year round online access to pupil and school level data via FFT Live
- Includes all 5 FFT Live modules: SETS, Student Explorer, School Groups, Export, Development
- Full online administration
- Basic email support for FFT Live administration issues
- Access to FFT national research & new developments

Cost:

- 45p per pupil (Y1-Y11)
- Minimum cost £100
- Maximum cost £250

Premium Annual Subscription

Basic subscription *plus*

- Extended email support (data queries, report questions, 'how to use FFT Live')
- 25% reduction on training courses and FFT optional packages

Cost:

Basic Subscription cost *plus* £500

See FFT Live at www.fftlive.org

Fischer Education Project Ltd is supported by Fischer Family Trust

The Fischer Family Trust is a Registered Charity, No 1075453

The Fischer Education Project is a company limited by guarantee

Fischer Family Trust

Student Explorer



Student Explorer provides you with a complete 'data history' for every pupil in your school. Based on historical national census and test data, it allows schools to track back and access a wide range of historical data. For example - which schools has a pupil previously attended? How many times have they moved schools in the last 5 years? When did they first become eligible for free school meals? What is their SEN history? What are their previous NC test/TA results? Have they over achieved/under achieved compared to similar pupils nationally in previous years? All this information and more is available in Student Explorer.

A new feature of Student Explorer is the ability to find which pupils may have the potential to make 'better than expected' progress in the future. Using pupil characteristics and national patterns of progress, Student Explorer helps schools to identify potential whilst also providing more challenging estimates.

By understanding a pupil's background, schools can also use Student Explorer to select pupils for targeted intervention and personalised learning programmes to improve outcomes, raise achievement and realise potential for all.

Features

- The Interactive Grid feature in Student Explorer allows you to quickly group pupils based on combinations of background data (e.g. how many FSM pupils achieved below the expected level in Mathematics and English in their previous key stage?)
- Use the Student List facility to select and list pupils based on a wide range of characteristics (e.g. identify those pupils where mobility may have impacted upon their previous attainment and progress)
- The Student Details report provides you with a complete background history for every pupil in your school. As well as including historical census data and prior attainment/progress it also includes estimates based on pupil characteristics helping schools to identify pupils with the potential to make higher rates of progress. These type of estimates are only available in Student Explorer.
- Student Finder allows you to search the Student Explorer online database to find individual pupils quickly and easily.

OTHER MODULES AVAILABLE IN FFT LIVE

- **SETS** - Self Evaluation & Target Setting Reports for your school and pupils
- **School Groups** - Share data and work collaboratively with other schools
- **Exports** - Export data from FFT Live to your school MIS
- **Development** - Pilot the latest developments from FFT Live (e.g. KS1 estimates, English Baccalaureate, KS3 Other Foundation Subject estimates)

To find out more about FFT Live
Visit our website: www.fischertrust.org
Email us: subscriptions@fischertrust.org
Telephone us: 01446 776262



Primary Subscriptions (1 Apr 2012 – 31 Mar 2013)

FFT Live data & support can be accessed **via your LA or direct from FFT**. Please contact your LA for further details.

FFT Direct options

Basic Annual Subscription:

- Year round online access to pupil and school level data via FFT Live
- Includes all 5 FFT Live modules: SETS, Student Explorer, School Groups, Export, Development
- Full online administration
- Basic email support for FFT Live administration issues
- Access to FFT national research & new developments

Cost:

- 45p per pupil (Y1-Y11)
- Minimum cost £100
- Maximum cost £250

Premium Annual Subscription

Basic subscription *plus*

- Extended email support (data queries, report questions, 'how to use FFT Live')
- 25% reduction on training courses and FFT optional packages

Cost:

Basic Subscription cost *plus* £500

See FFT Live at www.fftlive.org

Fischer Education Project Ltd is supported by Fischer Family Trust

The Fischer Family Trust is a Registered Charity, No 1075453

The Fischer Education Project is a company limited by guarantee

Fischer Family Trust

School Groups



The FFT Live **School Groups** module allows schools within a group to share data with each other. With the ability to view value added and estimates data for a whole group as well as for individual schools within the group, the module allows schools to work collaboratively online through benchmarking and monitoring, the sharing of best practice, support for target setting, joint planning and the sharing of expertise.

The School Groups module uses reports similar to those already found in FFT Live. This means that users can start to use the reports immediately, focussing on evaluation, actions and school to school collaboration.

FFT's experience clearly shows that one of the most important aspects of School Groups is the ethos within which data sharing takes place. Where schools agree to share data within an ethos of confidentiality and collaboration, School Group reports have proved to be an effective mechanism to support discussions leading to mutual support and improvement.

Features

- Identify your own strengths and areas for improvement using a range of attainment, value added and contextual value added measures and match these against other schools within your group.
- Use the School Groups module as a springboard for collaborative work with the ability for schools to offer 'two-way support'.
- Uses existing FFT Live reports (Significant Areas Grid, Subject Value Added, School Estimates) to evaluate group and school performance
- Easy setup of school groups by FFT or your LA.
- Turn School Groups ON or OFF for any individual FFT Live user in your school.
- Choose to be a member of a single group or multiple groups
- Does NOT include pupil data so no data protection issues.

OTHER MODULES AVAILABLE IN FFT LIVE

- **SETS** - Self Evaluation & Target Setting Reports for your school and pupils
- **Student Explorer** - Discover potential & improve intervention by exploring the history and background characteristics of pupils
- **Exports** - Export data from FFT Live to your school MIS
- **Development** - Pilot the latest developments from FFT Live (e.g. KS1 estimates, English Baccalaureate, KS3 Other Foundation Subject estimates)

To find out more about FFT Live
Visit our website: www.fischertrust.org
Email us: subscriptions@fischertrust.org
Telephone us: 01446 776262



Primary Subscriptions (1 Apr 2012 – 31 Mar 2013)

FFT Live data & support can be accessed **via your LA** or **direct from FFT**. Please contact your LA for further details.

FFT Direct options

Basic Annual Subscription:

- Year round online access to pupil and school level data via FFT Live
- Includes all 5 FFT Live modules: SETS, Student Explorer, School Groups, Export, Development
- Full online administration
- Basic email support for FFT Live administration issues
- Access to FFT national research & new developments

Cost:

- 45p per pupil (Y1-Y11)
- Minimum cost £100
- Maximum cost £250

Premium Annual Subscription

Basic subscription *plus*

- Extended email support (data queries, report questions, 'how to use FFT Live')
- 25% reduction on training courses and FFT optional packages

Cost:

Basic Subscription cost *plus* £500

See FFT Live at www.fftlive.org

Fischer Education Project Ltd is supported by Fischer Family Trust

The Fischer Family Trust is a Registered Charity, No 1075453

The Fischer Education Project is a company limited by guarantee

v1.0

Fischer Family Trust

Exports



Many schools use FFT Live to export data into their own Management Information Systems, tracking software or spreadsheets. The FFT Live **Exports** module makes it easier to transfer data quickly and easily - no colours, no formatting, no fuss!

From individual pupil estimates for NC levels, grades and chances to whole school level estimates to background contextual data, the FFT Live Exports module allows you to transfer data in a range of common formats to suit your own needs.

FFT continues to work with school software suppliers to improve the export and import of data between FFT Live and school MI systems. We are also jointly developing FFT modules within school MI systems with the potential to produce tailored pupil estimates linked to data held in school.

Features

- Export pupil, subject and school level estimates from KS1 up to KS5.
- Export individual pupil estimated levels, grades and probabilities into your MIS, tracking software or spreadsheets.
- Compare FFT estimates to your own individual pupil targets and assess a pupil's potential to make better progress.
- Enhance your FFT data by linking it to your own data (e.g. teaching groups, intervention groups, attendance data etc.)
- Use the FFT pre-defined export options or choose your own export selections.
- Uses FFT's innovative range of estimate models, allowing you to set the most appropriate level of challenge (you choose the model, you choose the percentile rank!)
- Exports available in a variety of common formats (excel, csv, xml, pdf).

OTHER MODULES AVAILABLE IN FFT LIVE

- **SETS** - Self Evaluation & Target Setting Reports for your school and pupils
- **Student Explorer** - Discover potential & improve intervention by exploring the history and background characteristics of pupils
- **School Groups** - Share data and work collaboratively with other schools
- **Development** - Pilot the latest developments from FFT Live (e.g. KS1 estimates, English Baccalaureate, KS3 Other Foundation Subject estimates)

To find out more about FFT Live
Visit our website: www.fischertrust.org
Email us: subscriptions@fischertrust.org
Telephone us: 01446 776262



Primary Subscriptions (1 Apr 2012 – 31 Mar 2013)

FFT Live data & support can be accessed **via your LA** or **direct from FFT**. Please contact your LA for further details.

FFT Direct options

Basic Annual Subscription:

- Year round online access to pupil and school level data via FFT Live
- Includes all 5 FFT Live modules: SETS, Student Explorer, School Groups, Export, Development
- Full online administration
- Basic email support for FFT Live administration issues
- Access to FFT national research & new developments

Cost:

- 45p per pupil (Y1-Y11)
- Minimum cost £100
- Maximum cost £250

Premium Annual Subscription

Basic subscription *plus*

- Extended email support (data queries, report questions, 'how to use FFT Live')
- 25% reduction on training courses and FFT optional packages

Cost:

Basic Subscription cost *plus* £500

See FFT Live at www.fftlive.org

Fischer Education Project Ltd is supported by Fischer Family Trust

The Fischer Family Trust is a Registered Charity, No 1075453

The Fischer Education Project is a company limited by guarantee

Fischer Family Trust

Development



Schools that wish to access the latest FFT developments can visit the **Development** area on FFT Live. FFT is continually working to improve and develop reports and add new features in order to ensure that FFT Live continues to meet the needs of users. In some cases this may be an update to an existing FFT Live report. In other cases it may be a completely new development - our new KS1 estimates or our recent English Baccalaureate reports for example.

As well as providing access to new reports and features, this area also allows schools to provide feedback and influence further development work - in some cases you may have the opportunity to take part in smaller pilot projects giving you exclusive access to new FFT reports!

Features

- Enables schools to access the latest development reports and features from FFT.
- Allows schools to provide feedback and influence future development plans.
- Enables schools to take part in small pilot projects providing exclusive access to new FFT reports
- Latest development reports include pupil and school level estimates for KS1, KS3 (non core subjects) and English Baccalaureate with further reports planned for 2011/12
- The Development module is available to all FFT Live users in your school.

OTHER MODULES AVAILABLE IN FFT LIVE

- **SETS** - Self Evaluation & Target Setting Reports for your school and pupils
- **Student Explorer** - Discover potential & improve intervention by exploring the history and background characteristics of pupils
- **School Groups** - Share data and work collaboratively with other schools
- **Exports** - Export data from FFT Live to your school MIS

Primary Subscriptions (1 Apr 2012 – 31 Mar 2013)

FFT Live data & support can be accessed **via your LA or direct from FFT**. Please contact your LA for further details.

FFT Direct options

Basic Annual Subscription:

- Year round online access to pupil and school level data via FFT Live
- Includes all 5 FFT Live modules: SETS, Student Explorer, School Groups, Export, Development
- Full online administration
- Basic email support for FFT Live administration issues
- Access to FFT national research & new developments

Cost:

- 45p per pupil (Y1-Y11)
- Minimum cost £100
- Maximum cost £250

Premium Annual Subscription

Basic subscription *plus*

- Extended email support (data queries, report questions, 'how to use FFT Live')
- 25% reduction on training courses and FFT optional packages

Cost:

Basic Subscription cost *plus* £500

See FFT Live at www.fftlive.org

Fischer Education Project Ltd is supported by Fischer Family Trust

The Fischer Family Trust is a Registered Charity, No 1075453

The Fischer Education Project is a company limited by guarantee

v1.0

To find out more about FFT Live

Visit our website: www.fischertrust.org

Email us: subscriptions@fischertrust.org

Telephone us: 01446 776262



Fischer Family Trust

FFT Live Administration & Help facilities



Primary Subscriptions (1 Apr 2012 – 31 Mar 2013)

FFT Live data & support can be accessed **via your LA or direct from FFT**. Please contact your LA for further details.

FFT Direct options

Basic Annual Subscription:

- Year round online access to pupil and school level data via FFT Live
- Includes all 5 FFT Live modules: SETS, Student Explorer, School Groups, Export, Development
- Full online administration
- Basic email support for FFT Live administration issues
- Access to FFT national research & new developments

Cost:

- 45p per pupil (Y1-Y11)
- Minimum cost £100
- Maximum cost £250

Premium Annual Subscription

Basic subscription *plus*

- Extended email support (data queries, report questions, 'how to use FFT Live')
- 25% reduction on training courses and FFT optional packages

Cost:

Basic Subscription cost *plus* £500

See FFT Live at www.fftlive.org

Fischer Education Project Ltd is supported by Fischer Family Trust

The Fischer Family Trust is a Registered Charity, No 1075453

The Fischer Education Project is a company limited by guarantee

v1.0

FFT Live includes a range of administration and help features, ensuring that **all staff can use FFT Live safely, efficiently and effectively**.

From FAQs and detailed help files to full training and guidance materials, FFT Live provides a full integrated online support package enabling schools to set up and start using FFT Live immediately. And of course, email support is also available direct from FFT.

(Basic subscription includes administration support only).

FFT Live also allows schools to set up two administration accounts enabling you to create, maintain and monitor accounts independently and online. So wherever your staff are located, you can be sure that they will always be able to access FFT Live safely and securely.

Administration key features

- **Add user** – simple two page wizard allowing school administrators to set up new accounts for staff in schools. As well as providing a unique username and password, administrators can also select the type of data that an FFT Live user can view – from school to pupil level information.
- **View/Modify Accounts** – maintain your FFT Live accounts quickly and easily - temporarily deactivate, delete or unlock accounts, change passwords and modify accounts. The View/Modify accounts module aims to take the hassle out of account maintenance whilst providing a safe and secure online environment for staff to work in.
- **View Account Statistics** – check who is using FFT Live, how many times they've logged in and when they last logged in. The View Account Statistics module enables Administrators to monitor account usage more effectively and provide pro-active support when required.

Help key features

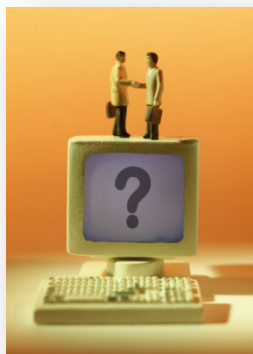
- **A range of online help topics** – available to all users, FFT Live includes a wide range of help topics to get users up and running including overviews, new developments, using reports with pupils, exporting and printing, My FFT Live, Logging-in to FFT Live and FFT models.
- **Help using reports** – every report in FFT Live has a unique help file, providing guidance on what the report means, the options available and most importantly how to use and interpret the data. This feature can be used by schools as an important 'first line support' for teachers.
- **Administration help** – full step-by-step guidance on how to use all FFT Live administration tools
- **Training pack** – a full training resource pack including powerpoint slides, activities and reports is available direct from FFT Live.

To find out more about FFT Live
Visit our website: www.fischertrust.org
Email us: subscriptions@fischertrust.org
Telephone us: 01446 776262



Fischer Family Trust

Primary school subscription options



Since 2001, FFT has worked successfully with Local Authorities and schools, providing a wide range of data to support target setting and self evaluation. With 100% of LAs and the vast majority of schools across England and Wales now making use of FFT data, the project continues to be at the forefront of high quality data provision and innovation in schools.

However, there have been a number of significant changes in the education system over the last 12 months – an acceleration of the Academies programme, increased delegation and responsibilities to schools and a change in LA roles and their relationships with schools.

In order to continue to meet the needs of schools, LAs and other partners, we have now developed a more flexible approach to data provision. Based on a range of subscription options, it will allow schools greater freedom to choose how they access FFT data and support.

From 1 April 2012 onwards, schools will be able to access FFT data and support in a variety of ways:

- Via your Local Authority (including Academies) – please contact your Local Authority for further details
- Via FFT through an individual School subscription (Basic and Premium options available)
- Via FFT through a School Group subscription (Basic and Premium options available)

Individual School Subscriptions

- Basic and premium subscription options available
- The **Basic Subscription** option provides access to all KS1-KS5 reports through FFT Live with basic support for administration issues (e.g. lost passwords). The basic subscription cost is 45p per pupil (Year 1 to 11) – minimum £100 & maximum £250.
- The **Premium Subscription** includes the basic package PLUS extended email support (e.g. data queries, how to use reports, statistical questions) and a 25% reduction on training courses and FFT optional packages (e.g. autumn update service). The premium subscription cost is the Basic subscription cost *plus* £500.
- Middle schools without any KS4 pupils are also charged at the primary subscription rate (45p per pupil).

Group Subscriptions

A discount of 10% is available where schools purchase FFT data as part of a group of 10 schools or more - one school / organisation purchases a subscription on behalf of a group of schools. In all other respects, group membership provides schools with the same data and support they would receive via individual membership i.e. support is provided on an individual school basis, not to a single group contact.

Primary Subscriptions (1 Apr 2012 – 31 Mar 2013)

FFT Live data & support can be accessed **via your LA** or **direct from FFT**. Please contact your LA for further details.

FFT Direct options

Basic Annual Subscription:

- Year round online access to pupil and school level data via FFT Live
- Includes all 5 FFT Live modules: SETS, Student Explorer, School Groups, Export, Development
- Full online administration
- Basic email support for FFT Live administration issues
- Access to FFT national research & new developments

Cost:

- 45p per pupil (Y1-Y11)
- Minimum cost £100
- Maximum cost £250

Premium Annual Subscription

Basic subscription *plus*

- Extended email support (data queries, report questions, 'how to use FFT Live')
- 25% reduction on training courses and FFT optional packages

Cost:

Basic Subscription cost *plus* £500

See FFT Live at www.fftlive.org

Fischer Education Project Ltd is supported by Fischer Family Trust

The Fischer Family Trust is a Registered Charity, No 1075453

The Fischer Education Project is a company limited by guarantee

v1.0

To find out more about FFT Live
Visit our website: www.fischertrust.org
Email us: subscriptions@fischertrust.org
Telephone us: 01446 776262

FISCHER
FAMILY TRUST