

Governor Dashboard

Paul Charman

Director, Strategy & Operations, FFT

Chair of Governors, Dyson Perrins Church of England Academy, Malvern

"Understanding data ... requires governors, first and foremost, to access robust, objective data which they can use to ask challenging questions"



Lord Nash

"Governors need information that helps them compare their school to other schools"

" ... accessing the data is one thing. Understanding it and having the confidence to act on it is quite another"

"the best governing bodies know exactly how well their pupils perform across the curriculum and whether they are making sufficient progress in relation to similar schools"



Sir Michael Wilshaw

Using data to support and challenge

1. School self evaluation (annual)
→ past performance
2. Setting challenging targets (annual)
→ future performance
3. Tracking in-year pupil progress against targets (termly)
→ current performance

Providing Governors with Better Information



School Data Dashboard



Governor Dashboard



wellcometrust

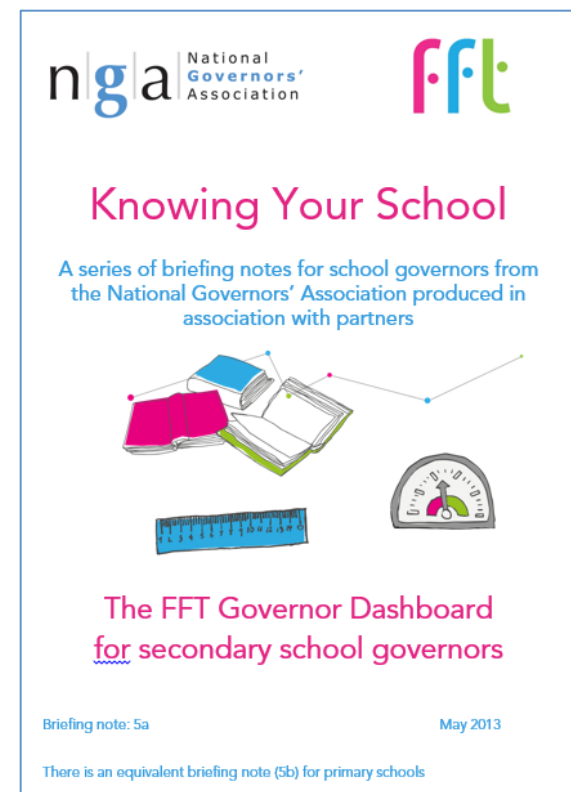
RAISEonline



Governor Dashboard - Introduction

Six key questions:

1. How does attainment and pupil progress at my school compare to the national average?
2. How are we performing in different subjects?
3. Do we have any under-performing groups of pupils?
4. How might the context of our school affect our performance?
5. How does pupil attendance compare to the national average?
6. What are the strengths and weaknesses of your school?



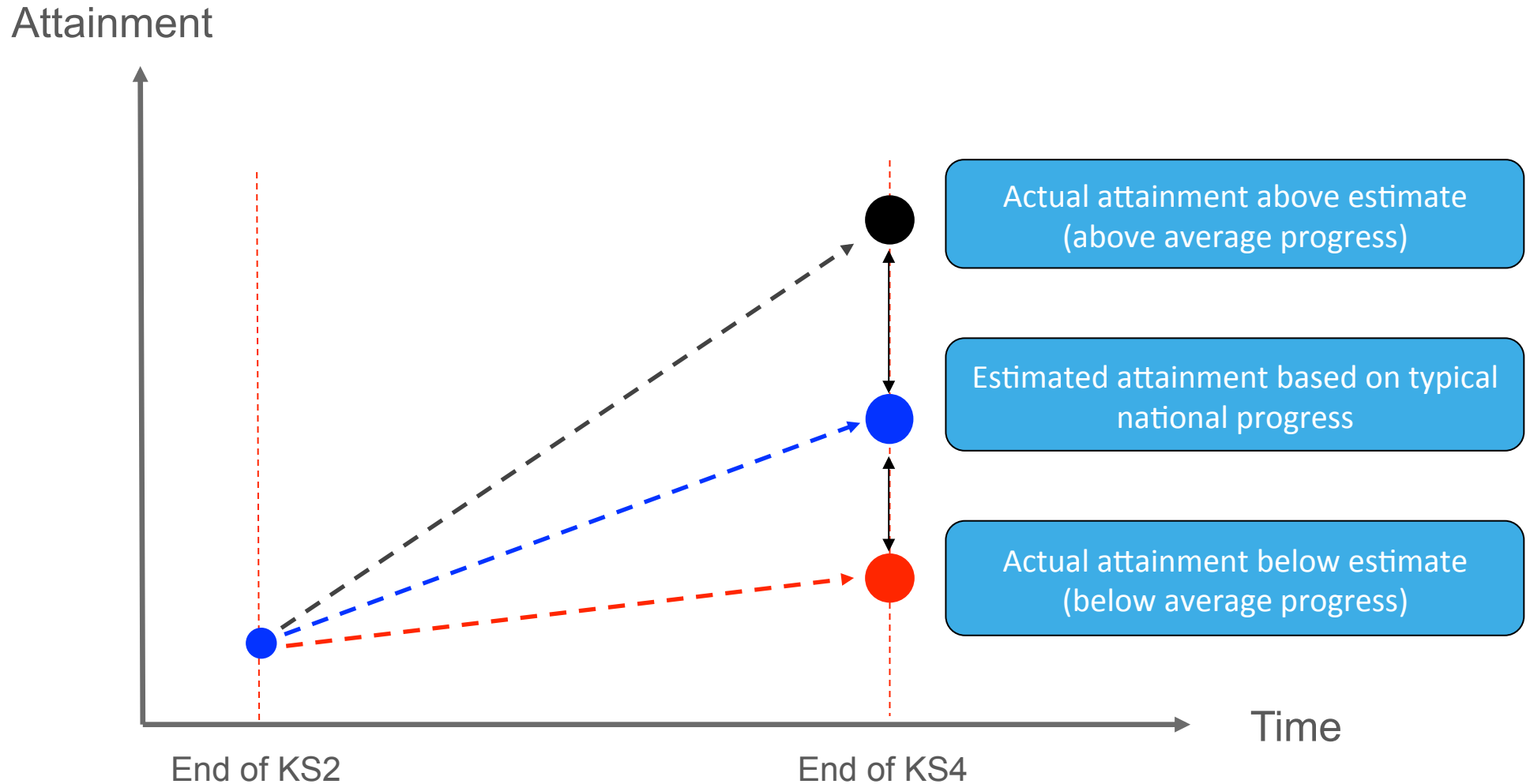
Attainment – Pupil Results

	Primary	Secondary
Threshold measure	% pupils achieving Level 4+ in Reading, Writing & Maths	% of pupils achieving 5+ A*-C including English & Maths
Average Point Score	Average Point Score (APS) in Reading, Writing & Maths	Average Point Score (capped – best 8 subjects)

Level	Points
W	3
1	9
2	12 to 17
3	18 to 23
4	24 to 29
5	30 to 35
6	36 to 41

Grade	Points
A*	58
A	52
B	46
C	40
D	34
E	28
F	22
G	16
U	0

Achievement – Value Added Pupil Progress



Achievement – an example

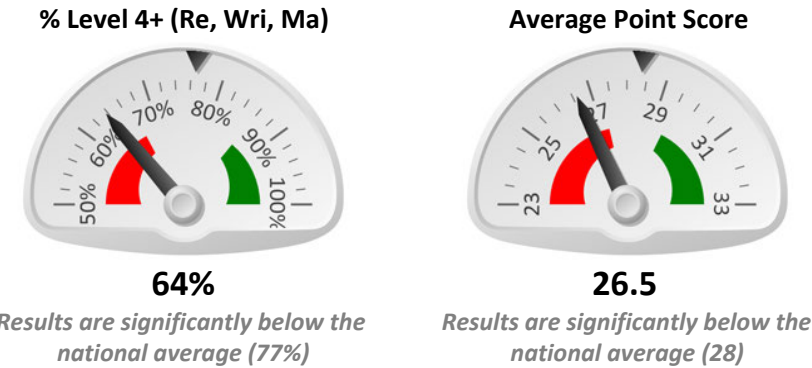
Example School	Actual results	Estimated results	Difference (Act vs Est)	Interpretation
School A	80%	75%	+ 5%	Pupils achieved <u>5%</u> <u>higher</u> than expected (positive value added)
School B	82%	90%	- 8%	Pupils achieved <u>8%</u> <u>lower</u> than expected (negative value added)

How do FFT calculate the expected result?

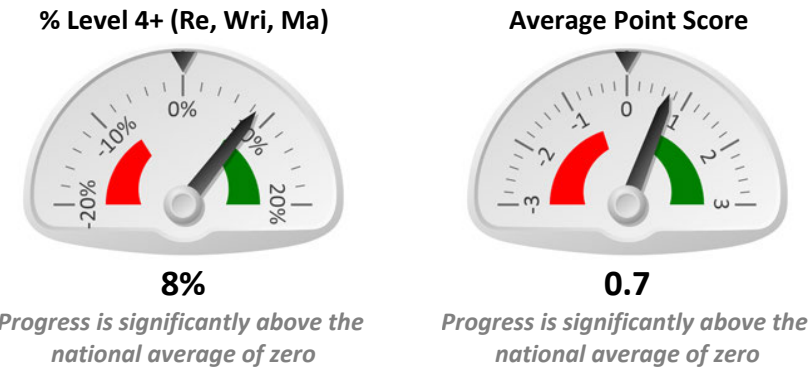
Factors	Value Added (PA)	Contextual Value Added (SX)
Prior Attainment	✓	✓
Month of birth	✓	✓
Gender	✓	✓
Pupil ethnicity	✗	✓
Pupil free school meal (FSM) eligibility	✗	✓
Pupil special educational needs	✗	✓
Pupil mobility	✗	✓
Pupil first language	✗	✓
Pupil length of time in school	✗	✓
Year group: average prior attainment	✗	✓
Year group: variation in prior attainment	✗	✓
Year group: % eligible for free school meals	✗	✓
Year group: socio-economic ranking	✗	✓

Note - Governor Dashboard uses Value Added (PA), but Contextual Value Added (SX) analyses are available in FFTLive and FFT Self Evaluation Booklet

Pupil Results - Attainment (2013)



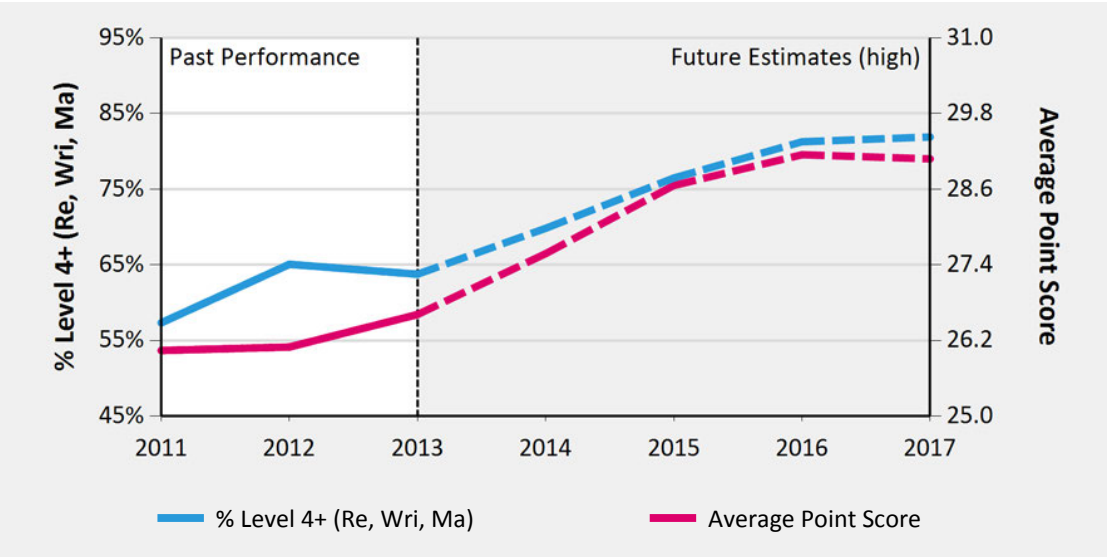
Pupil Progress - Achievement (2013)



Relative Strengths and Weaknesses (3 years)

Stronger Areas	Weaker Areas
Other Asian	SEN School Action +
Pakistani	SEN School Action
Higher ability	Joined school in Yrs 5 or 6

Key Stage 2 Headline Performance

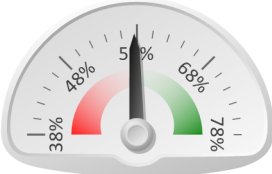


Key Stage 2 Performance Summary

	Actual Results			Pupil Progress (Act vs Est)		
	2011	2012	2013	2011	2012	2013
Number of Pupils	80	84	81	-	-	-
% Level 4+ (Re, Wri, Ma)	● 56%	● 65%	● 64%	1%	-1%	★ 8%
% Level 5+ (Re, Wri, Ma)	10%	● 6%	16%	1%	-5%	7%
Average Point Score	● 26.0	● 26.2	● 26.5	-0.4	● -0.8	★ 0.7
% 2 Levels Progress - Reading	● 77%	90%	91%	● -8%	-3%	★ 8%
% 2 Levels Progress - Writing	90%	94%	97%	4%	2%	5%
% 2 Levels Progress - Maths	76%	86%	87%	-5%	-2%	6%

Pupil Results (Attainment)

% 5+ A*-C incl Eng & Maths



Average

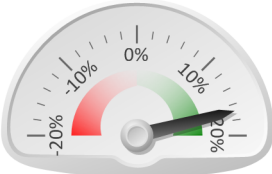
Average Point Score (best 8)



Average

Value Added Pupil Progress (Achievement)

% 5+ A*-C incl Eng & Maths



Significantly above average

Average Point Score (best 8)

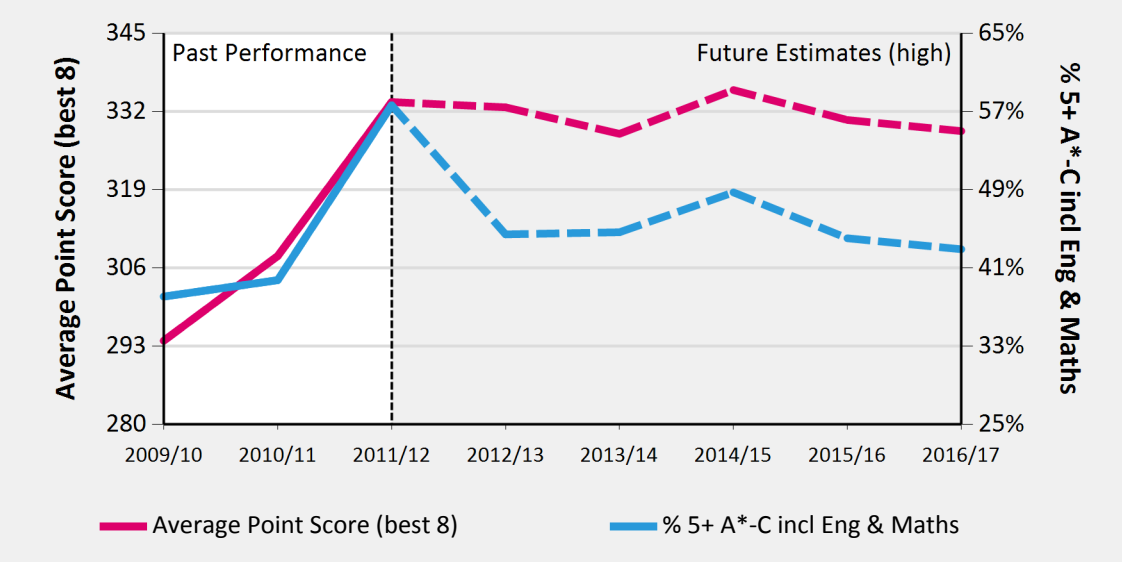


Significantly above average

Relative Strengths and Weaknesses (3 years)

	Stronger Areas	Weaker Areas
Pupil Groups	Indian	Higher ability
	EAL - Yes	SEN School Action
	Black Caribbean	White
	Not FSM (in last 6 yrs)	FSM (in last 6 yrs)
Subjects	English Language And	Home Economics: Child
	Mathematics	Art & Design (Fine Art)
	Science (Core)	History
	D&T Product Design	D&T Textiles Technology

Key Stage 4 Headline Performance Indicators



Key Stage 4 Headline Performance Summary

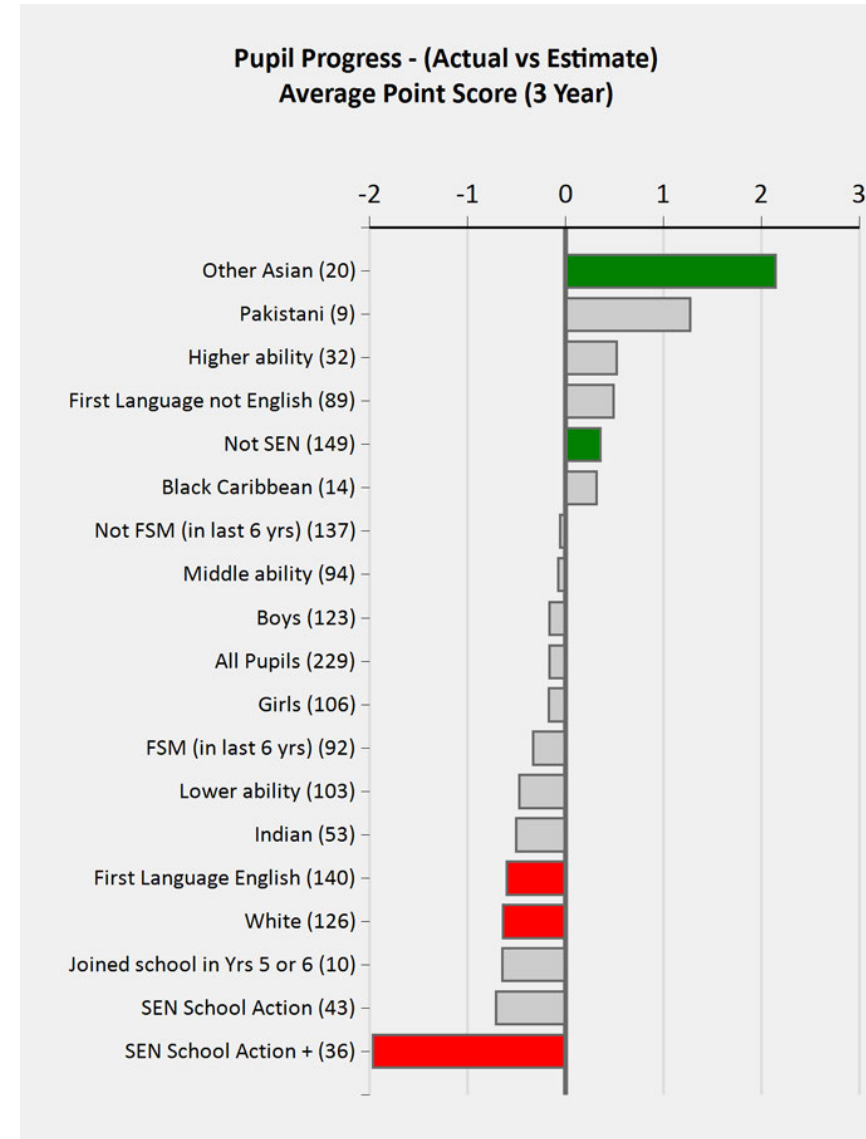
	Actual Results			Pupil Progress (Act vs Est)			3 Year Trend
	2010	2011	2012	2010	2011	2012	
Number of Pupils	197	161	162				
% 5+ A*-C incl Eng & Maths	38%	40%	54%	-3%	-5%	★ 15%	
Average Point Score (best 8)	294	308	330	● -19	● -13	★ 13	
Average Grade	31	29	33	● -5	● -6	● -2	
% pupils achieving 5+ A*-A	4%	1%	1%	-4%	● -7%	● -5%	
% 3 Levels Progress - English	43%	44%	73%	● -20%	● -22%	★ 12%	
% 3 Levels Progress - Maths	49%	44%	60%	-4%	● -12%	3%	

Self Valley Primary School (2013)

Key Stage 2 Subject Performance

	Actual Results			Pupil Progress (Act vs Est)		
	2011	2012	2013	2011	2012	2013
Pupils	80	84	81	-	-	-
Reading						
% Level 4+	● 76%	● 74%	● 75%	● -7%	● -7%	1%
% Level 4B+	● 48%	● 55%	● 62%	● -16%	● -18%	6%
% Level 5+	● 25%	● 17%	● 34%	● -7%	● -18%	8%
Average Point Score	● 26.0	● 25.3	● 26.2	● -1.2	● -1.7	0.4
Writing						
% Level 4+	75%	● 71%	77%	3%	0%	★ 13%
% Level 5+	25%	● 11%	● 18%	★ 16%	-3%	5%
Average Point Score	26.9	● 25.8	26.5	★ 1.2	-0.1	★ 1.3
Mathematics						
% Level 4+	● 69%	● 76%	● 74%	-6%	-5%	2%
% Level 4B+	● 53%	● 63%	● 54%	-6%	-3%	-2%
% Level 5+	● 20%	● 28%	● 27%	-4%	2%	6%
Average Point Score	● 26.0	● 26.7	● 26.5	-0.4	-0.4	0.5

Pupil Groups: Achievement over 3 years

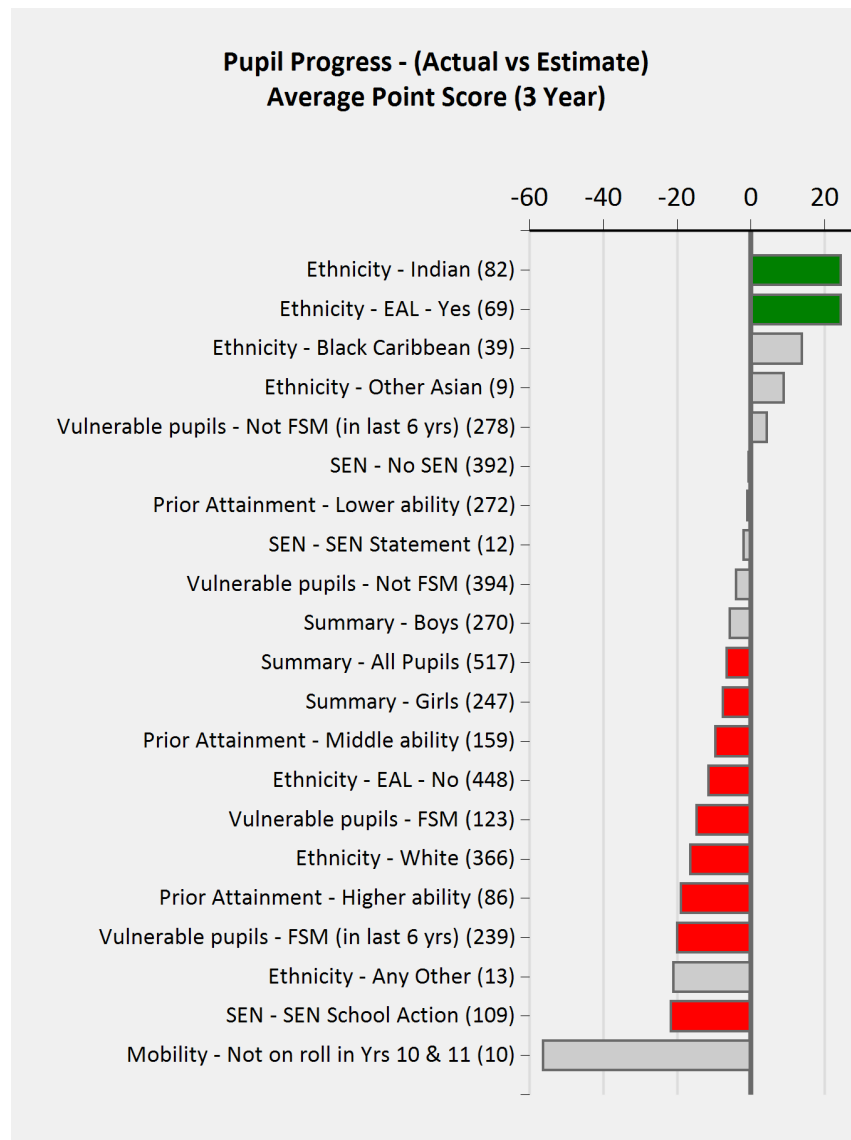


Milton Abbey Secondary School (2012)

Key Stage 4 Subject Performance

	Pupils	Actual Results			Pupil Progress (Act vs Est)		
		Average Point Score	%A*-A	%A*-C	Average Point Score	%A*-A	%A*-C
Additional Maths	1	40	0%	100%	-8	-44%	3%
Art&Des - Fine Art	40	37	0%	52%	● -4	● -15%	● -18%
D&T Product	70	33	1%	36%	● -2	-5%	-7%
D&T Textiles Tech.	26	37	0%	54%	● -3	● -16%	-10%
Drama &	13	35	0%	46%	● -4	-15%	-16%
English	167	38	4%	74%	★ 3	0%	★ 33%
English Language	1	52	100%	100%	-2	12%	0%
English Literature	1	46	0%	100%	-7	● -83%	0%
French	6	42	0%	67%	6	-9%	30%
Geography	28	33	7%	36%	● -3	-4%	-11%
HE: Child Devt	39	27	0%	0%	● -10	● -10%	● -55%
History	62	35	7%	43%	-2	-5%	-9%
Mathematics	167	36	3%	63%	1	-4%	★ 12%
Music	28	35	7%	32%	● -3	-8%	● -25%
Punjabi	1	40	0%	100%	-8	-50%	10%
Religious Studies	13	40	8%	62%	● -7	● -36%	● -25%
Science (Core)	38	41	5%	95%	0	● -11%	★ 19%
Science: Additional	39	40	10%	69%	● -2	-9%	-8%
Sport/P.E. Studies	14	24	0%	0%	● -12	-5%	● -47%

Pupil Groups - Progress



Strengths and Weaknesses

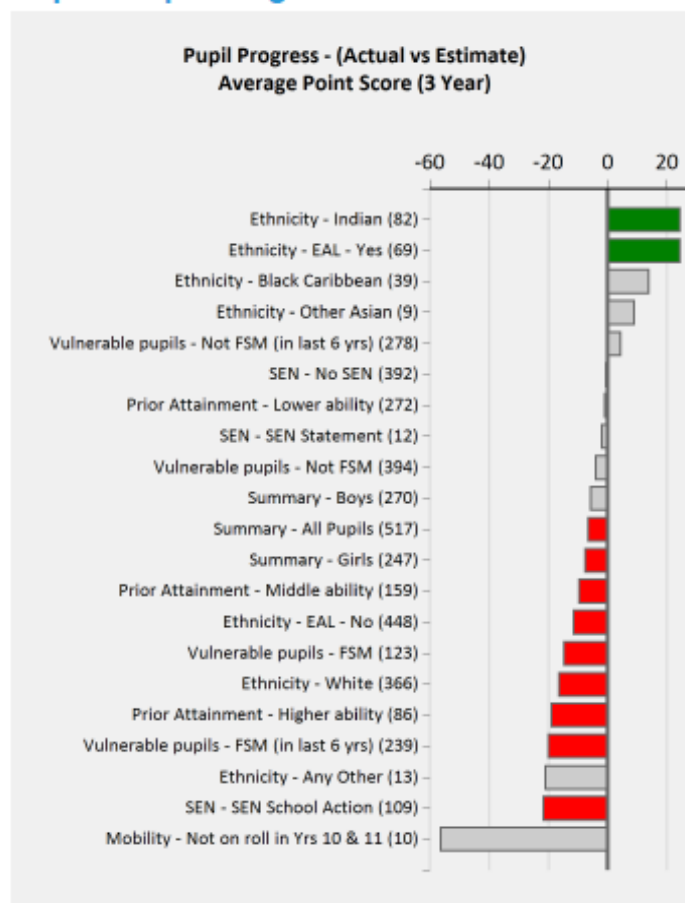
Relative Strengths and Weaknesses (3 years)

Stronger Areas	Weaker Areas
Any Other	SEN Statement
No SEN	SEN School Action +
White	Black African
Middle ability	EAL - No

Relative Strengths and Weaknesses (3 years)

	Stronger Areas	Weaker Areas
Pupil Groups	Indian	Higher ability
	EAL - Yes	SEN School Action
	Black Caribbean	White
	Not FSM (in last 6 yrs)	FSM (in last 6 yrs)
Subjects	English Language And	Home Economics: Child
	Mathematics	Art & Design (Fine Art)
	Science (Core)	History
	D&T Product Design	D&T Textiles Technology

Pupil Groups - Progress



Pupil Context (Year 6, 2013)

		Pupils	School	National
Summary	All Pupils	81	100%	100%
	Girls	42	52%	49%
	Boys	38	48%	51%
Prior Attainment	Higher ability	11	14%	33%
	Middle ability	26	32%	34%
	Lower ability	39	48%	33%
SEN	SEN School Action	15	19%	12%
	SEN School Action +	14	17%	8%
	Not SEN	50	62%	77%
Free School Meals	FSM (in last 6 yrs)	33	41%	31%
	Not FSM (in last 6 yrs)	47	58%	69%
Ethnicity	White	47	58%	78%
	Black Caribbean	5	6%	3%
	Black African	3	4%	4%
	Pakistani	6	7%	4%
	Other Asian	4	5%	2%
	Any Other	1	1%	3%
First Language	First Language not English	33	41%	15%
	First Language English	48	59%	85%
Mobility	Joined school in Yrs 5 or 6	5	6%	7%

School Absence (Year 1 to Year 6, 2013)

		Pupils	Absence		Persistent Absentees	
			School	National	School	National
Summary	All Pupils	539	5%	5%	6%	4%
	Girls	249	5%	5%	7%	4%
	Boys	290	5%	5%	5%	4%
Prior Attainment	Higher ability	146	4%	4%	1%	2%
	Middle ability	176	5%	5%	6%	3%
	Lower ability	208	6%	6%	10%	7%
SEN	SEN School Action	65	5%	6%	10%	7%
	SEN School Action +	50	6%	6%	6%	8%
	SEN Statement	1	♦	7%	♦	11%
	Not SEN	422	5%	4%	6%	4%
Free School Meals	FSM (in last 6 yrs)	233	5%	6%	8%	8%
	Not FSM (in last 6 yrs)	308	5%	4%	5%	3%
Ethnicity	White	299	5%	5%	7%	4%
	Black Caribbean	27	6%	5%	7%	6%
	Black African	27	3%	4%	0%	3%
	Indian	88	4%	5%	3%	4%
	Pakistani	23	9%	5%	17%	5%
	Other Asian	66	4%	5%	3%	4%
First Language	First Language not English	225	5%	5%	6%	5%
	First Language English	314	5%	5%	6%	4%

Year 1 Attendance



94.3%

Year 2 Attendance



95.1%

Year 3 Attendance



94.6%

Year 4 Attendance



95.8%

Year 5 Attendance



94.9%

Year 6 Attendance



95.9%

Achievement of pupils: what will Ofsted look at?

1. Learning and progress across year groups of different groups of pupils currently on roll
2. Pupils' progress in the last three years
3. Pupils' attainment (results) over three years in relation to national standards
4. Difference in achievement between those for whom the pupil premium provides support and other pupils in the school

Using data to support and challenge your school

- Holding the school leadership team to account: ensuring that all pupils are making good progress
- Self evaluation: understanding strengths and weaknesses
- Setting the strategic vision for the school
- School improvement: planning, development & monitoring
- Preparing for Ofsted inspection and external accountability
- Independent support for Headteacher performance management

Training & support for governors

- Knowing Your School Guide FFT Governor Dashboard (www.fft.org.uk)
- FFT Governor Dashboard training events: London, Birmingham & Manchester
 - Free FFT training workshops in London (20th Nov), Birmingham (27th Nov) & Manchester (3rd Dec)
- New online e-learning module for governors will be launched in November
- Follow us on Twitter: @FFTEdu
- Email us: hello@fft.org.uk