

# BIN LORRY BANNER DESIGN SCHOOL COMPETITION

This document outlines everything you need to know to take part and submit an entry to the competition on behalf of your pupils. Please read each section carefully, they are:

1. Context of the competition
2. Competition Criteria
3. How will my submission be judged?
4. How to submit your entry
5. Terms and Conditions
6. The Prize
7. Appendix



## 1. Context

Our fleet of collection vehicles is equipped with a banner (1215cm (h) x 3765cm (w)) display system. We will soon be renewing the designs of the banners and would like to feature the artwork of the pupils in the district for the new designs.

The aim of the banners is to encourage residents in the District to recycle more and waste less.

## 2. Competition Criteria

Year 5 pupils must design a simple poster to encourage recycling or waste minimisation (the 4 Rs, Reduce, Reuse, Recycle, Recover). The poster can be drawn in crayons, pencil crayons, felt pens or created digitally on an A4 sheet of landscape paper and include their name, age and the name of their school.

Please see the following two lesson plans which have been attached in the same email as this competition brief, which you might like to deliver to your pupils to inspire them before they design a poster.

- The 4 Rs
- The Recycling Journey





### 3. How will my submission be judged?

The deadline for submissions is 15 May 2023. Judging will be carried out by Veolia and Broadland District Council with the results published to schools shortly afterwards. Each submission will be judged according to the following criteria:

- 70% for how well the submission meets the competition criteria (identify, describe, explain, design)
- 30% for the quality of the submission- the more creative the submission the better



### 4. How to submit my application?

To enter the Competition a representative from your school - i.e. the School Sponsor - must complete, sign and date the Application Form at the bottom of this document and submit it with the entry on the pupil's behalf.

The School Sponsor must be a staff member employed within the school, for example, a Teacher. Please email: [broadlanddc.vesuk@veolia.com](mailto:broadlanddc.vesuk@veolia.com)

### 5. Terms and conditions

- Veolia may share information relating to the competition entries with its partner, Broadland District Council, including the application, poster submission document and details and names of schools and pupils taking part. All data will be processed in accordance with [Veolia's GDPR policy](#);
- Veolia and Broadland District Council may publish competition entries both in print and online, including on their website, social media channels, and for PR purposes; the winning pupil(s) may be invited to participate in publicity arising from the competition, including a photoshoot.
- Entries can be made by individual pupils or groups of up to 10 pupils;
- Students must submit only one poster design. Multiple entries made by the same person(s) will not be accepted;
- Only entries which meet all submission criteria will be considered;
- No responsibility can be accepted for entries not received, for whatever reason;
- The fruit tree orchards will be awarded to 4 different schools of the winning entries;
- Winning entries will be selected by Veolia and schools will be notified shortly after the competition closing date.





## 6. The Prize



Each winning school will receive an orchard made of 3 young fruit trees (1 apple, 1 pear and 1 plum).

Veolia has experience working with schools to plant orchards on their ground thanks to the Veolia School Orchards campaign launched in 2022 in partnership with Groundwork.

As part of this campaign, an orchard tree care guide was developed for the teachers.

The booklet includes information about the importance of orchards and biodiversity, a step-by-step guide to planting and caring for the trees as well as some tips to harvest and cook the fruits. Upon school request, we could also be available to assist with the planting session. The orchard will be delivered in the autumn of the following school year. By opening the competition to year 5 we are ensuring that the pupils will still be in the school to plant the trees won with their artwork!





## 7. Appendix

### • What goes in the grey recycling bin?

The following items can be recycled in the grey recycling bin.

All recycling must be:

- clean – please rinse containers and do not put in any food leftovers
- loose – please do not put anything in plastic bags or black bin liners
- dry – please ensure the bin lid remains shut

#### **Paper and cardboard**

newspapers/magazines

leaflets

packaging card and cardboard

wrapping paper (clean and without adhesive tape, ribbons and glitter)

greeting cards

envelopes (including those with windows)

catalogues/telephone books

shredded paper



#### **Metal tins, cans and foil**

all steel and aluminium cans and tins

clean foil trays and containers

empty aerosol cans

aluminium foil



#### **Plastic containers**

milk and drink bottles (lids on)

bathroom bottles (lids on including trigger and pump spray bottles)

food and ready meal trays (including black plastic trays)

fruit and vegetables punnets

yoghurt, cream and soup pots

ice cream and margarine tubs



#### **Food and drink cartons**

milk cartons

juice cartons



#### **Glass**

glass bottles - lids on

glass jars - lids on





## 7. Appendix

- **What does not go in the grey recycling bin?**

The following items can not be recycled in the grey recycling bin.

When it comes to contamination, there are several ways in which items can spoil a load of recycling. It's not just about putting the wrong thing in the wrong bin, contamination also occurs when unclean objects are mixed with clean recycling. Placing the wrong items in your recycling bin makes it much more difficult for the operators at the Material Recovery Facility (MRF) to sort your waste and it also increases their risk of injury. Moreover, items like textiles can get winded in the equipment and lead to costly breakdowns.



**Food waste**



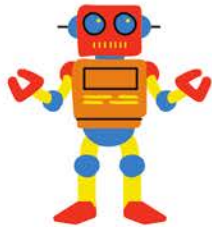
**Textiles**



**Crisp Packets**



**Garden waste**



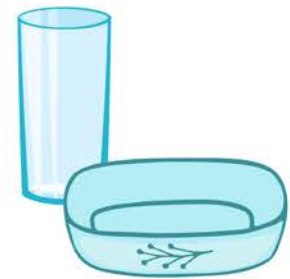
**Toys**



**Plastic bags**



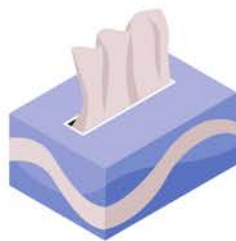
**Nappies**



**Drinking or cooking glass**



**Polystyrene**



**Tissues**



**Food pouches**



**Coffee cups**





# 7. Appendix

## • The 4Rs lesson

This section contains 24 numbered slides for the 'The 4Rs' lesson. The slides are arranged in a 4x6 grid. Each slide features a hedgehog character and various illustrations related to recycling and waste management. The topics covered include:

- Slide 1:** Introduction to 'The 4 Rs'.
- Slide 2:** 'Waste Reduction Pledge'.
- Slide 3:** 'The 4 Rs' overview.
- Slide 4:** 'Why does it matter?' - Reducing waste.
- Slide 5:** 'Why does it matter?' - Reusing items.
- Slide 6:** 'The Waste Hierarchy'.
- Slide 7:** 'Reduce' - Reducing waste.
- Slide 8:** 'Reduce' - Reducing waste.
- Slide 9:** 'Reduce' - Reducing waste.
- Slide 10:** 'How can I reduce water?'.
- Slide 11:** 'Reuse' - Reusing items.
- Slide 12:** 'Waste Reduction Pledge'.
- Slide 13:** 'Waste Reduction Pledge'.
- Slide 14:** 'Why should I reuse materials?'.
- Slide 15:** 'Why should I reuse materials?'.
- Slide 16:** 'Reuse' - Reusing items.
- Slide 17:** 'Reuse' - Reusing items.
- Slide 18:** 'How can I reuse materials?'.
- Slide 19:** 'Why should I reuse materials?'.
- Slide 20:** 'Let's try it!'.
- Slide 21:** 'Let's try it!'.
- Slide 22:** 'Let's try it!'.
- Slide 23:** 'Recycle' - Recycling items.
- Slide 24:** 'How can I recycle?'.

## • The Recycling Journey lesson

This section contains 18 numbered slides for the 'The Recycling Journey' lesson. The slides are arranged in a 4x6 grid. Each slide features a hedgehog character and various illustrations related to recycling. The topics covered include:

- Slide 1:** Introduction to 'The Recycling Journey'.
- Slide 2:** 'Who are we?'.
- Slide 3:** 'The Recycling Journey'.
- Slide 4:** 'What is recycling?'.
- Slide 5:** 'What is recycling?'.
- Slide 6:** 'Why should I recycle?'.
- Slide 7:** 'Why should I recycle?'.
- Slide 8:** 'The Recycling Journey'.
- Slide 9:** 'How can I recycle?'.
- Slide 10:** 'The Recycling Journey'.
- Slide 11:** 'The Recycling Journey'.
- Slide 12:** 'The Recycling Journey'.
- Slide 13:** 'The Recycling Journey'.
- Slide 14:** 'The Recycling Journey'.
- Slide 15:** 'The Recycling Journey'.
- Slide 16:** 'The Recycling Journey'.
- Slide 17:** 'The Recycling Journey'.
- Slide 18:** 'The Recycling Journey'.

