

Foundation skills in Speech, language and communication for KS3 & 4



- *New to your role in a high school setting?
- *Need a refresher of your skills for supporting young people with Speech, Language and Communication Needs?

Overview

This *NEW* online course will help you to understand the skills involved in talking and how communication skills continue to develop beyond the primary years. It will also cover the impact of communication difficulties and key strategies to support pupil's communication in high school.

Learning outcomes

- Gain a basic knowledge of the skills involved in communication
- Be able to recognise different types of communication difficulties
- Learn key strategies and activities to support children in the classroom and beyond

Date	Wednesday 25th November 2020
Time	9.30am-12.30pm
Course Fee	£20
Suitability	KS3/4 SENCOs, teachers and support staff

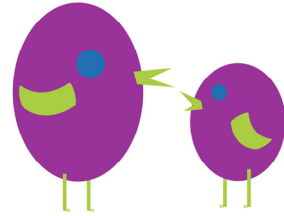
Speak east

Equipping you to support communication development

Book online now!

Salt.ecch.org/training-courses

Overview



Day 1

- ⇒ What is communication?
- ⇒ How do communication skills develop?
- ⇒ What can go wrong in communication development?
- ⇒ Supporting children with receptive language difficulties
- ⇒ Supporting children with expressive language difficulties

Day 2

- ⇒ Supporting children with speech sound difficulties
- ⇒ Supporting children with other communication difficulties
 - stammering
 - social communication difficulties
- ⇒ Working with Speech and Language Therapists

Dates	Day 1 — Wednesday 7th October 2020 Day 2 — Wednesday 11th November 2020
Time	9.30am-3.30pm
Location	Sprowston Diamond Centre, School Lane, Norwich NR7 8TR
Course Fee	£100 per delegate (2 days including lunch)
Suitability	EYFS and KS1-2 Teaching assistants and support staff
Booking Deadline	Thursday 1st October

Places limited! Book now

Salt.ecch.org/training-courses

Speak east

Equipping you to support communication development

For more information, or to book, contact us on

Ecch.speakeast@nhs.net

01493 808630

