

NORWICH THEATRE ROYAL

EDUCATION UPDATE

June 2010 – January 2011

Welcome to Norwich Theatre Royal's Education Newsletter, which has details of all productions that may be of interest to you and your students in the coming months. If you wish to be involved in the production-related activities or receive any of the educational resource packs please contact the education department for more information. Jason Raper, Education Manager

PRODUCTIONS

DRAMA ~

The Woman in Black
Quartet
Carrie's War
the actors company - The Pillowman

DANCE ~

Russian Ice Stars – Snow White on Ice
English Youth Ballet – Sleeping Beauty
Matthew Bourne's Swan Lake
Rambert Dance Company
Northern Ballet Theatre - The Nutcracker

MUSICAL ~

Rocky Horror Show
Man in the Mirror
Oklahoma!

OPERA ~

Glyndebourne Touring Opera

NORFOLK SCHOOLS PROJECT ~

Don Giovanni

PANTOMIME 2010/2011 ~

Jack and the Beanstalk

EDUCATION INFORMATION ~

Annual Open Day
Norwich Theatre Royal's Website
Work Experience Placements
Tours of the Theatre

For full details of the theatre's programme please refer to our brochure



Photo Above: Northern Ballet Theatre's The Nutcracker
Photo by Bill Cooper



Photo Above: Matthew Bourne's Swan Lake

Contact Details

✉ The Education Department
Norwich Theatre Royal
Theatre Street
Norwich



Education 01603 598523/ 598522/598528
Fax 01603 598501
Email j.raper@theatreroyalnorwich.co.uk
Website www.theatreroyalnorwich.co.uk

Norwich Theatre Royal's Education Department is generously supported by Intouch Systems, Garfield Weston Foundation, Lambda Films, The Foundation of Joanna Scott and The Monument Trust



For details of events and workshops call the Education Department on 01603 598523/598522/598528
To book tickets for all performances call the Box Office on 01603 630000

NORWICH THEATRE ROYAL

EDUCATION UPDATE

June 2010 – January 2011

DRAMA

THE WOMAN IN BLACK ~

Monday 21st – Saturday 26th June 2010

A lawyer obsessed with a curse that he believes has been cast over him and his family by the spectre of a 'Woman in Black', engages a sceptical young actor to help him tell his terrifying story and exorcise the fear that grips his soul. It all begins innocently enough, but as they reach further into his darkest memories, they find themselves caught up in a world of eerie marshes and moaning winds. The borders between make believe and reality begin to blur and the flesh begins to creep...



Concessions:

Schools: Bands C & D £7.00 Wednesday Matinee ONLY

Under 18s Special Price ~ Bands A&B £10, Tuesday - Thursday Evenings

Group Rates available Tuesday to Thursday Evenings & Matinees

THE WOMAN IN BLACK ~ Question and Answer Event

Wednesday 23rd June 2010 at 4.45pm – 5.15pm, in the auditorium

This free event, due to take place directly after the matinee performance in the auditorium, will last approximately ½ an hour and will involve members of the visiting company. The format will involve some introduction from the chair and then questions from the floor. If you have booked for another performance but wish to attend please contact the education department to reserve your place.



Cost:

This event is Free

THE WOMAN IN BLACK ~ Free Teacher Resources

A free Teacher Resource pack to accompany this production is available and offers in-depth exploration of the play with reference to the production process and interviews with the author Susan Hill and adaptor Stephen Mallatratt. This pack is aimed at teachers across the curriculum. It contains activities suitable for students of Drama, Art & Design, Dance, Media Studies, English, Music, ICT, RE, PSHE and Citizenship, from KS3 to KS5, including some of the specialist units of BTEC Performing Arts courses and the new Creative and Media Diploma.

The pack is available to download online directly from their website www.thewomaninblack.com

THE WOMAN IN BLACK ~ Education Workshops

Available Tuesday 22nd, Thursday 24th and Friday 25th June 2010, in the auditorium

These are 60-minute interactive workshops. Your students will explore key scenes and find out how the text is explored and interpreted. It will help students develop a deeper understanding of the play. These workshops are particularly suitable for Drama and English Literature students and are designed for groups of a minimum of 25 students and a maximum of 100 students. Recommended for Year 7 and above. For further details and to book a workshop please contact Jason Raper, Education Manager



Cost:

£3.00 per student (teachers go free)

For details of events and workshops call the Education Department on 01603 598523
To book tickets for all performances call the Box Office on 01603 630000

NORWICH | THEATRE | ROYAL

NORWICH THEATRE ROYAL

EDUCATION UPDATE

June 2010 – January 2011

QUARTET ~

Monday 9th – Saturday 14th August 2010

Retired opera singers Cissy, Reggie and Wilfred are excited about performing a concert until their tranquil world is unexpectedly interrupted by the arrival of legendary diva, Jean Horton. As old rivalries resurface and past secrets are revealed, can the four put aside their differences?

The author of this play is Academy Award-winning playwright Ronald Harwood. Masterful story-telling combined with sparkling wit create a bittersweet comedy that is at times both poignant and hilariously funny. Stars Gwen Taylor, Susannah York, Timothy West and Michael Jayston.



Concessions: Under 18s Special Price ~ Bands A&B £10, Tuesday to Thursday Evenings.
Group Rates available Tuesday to Thursday Evenings & Matinees

QUARTET ~ Meet and Greet Event

Wednesday 11th August 2010 after the matinee performance

This free event, due to take place directly after the matinee performance in the auditorium, will last approximately ½ an hour and will involve members of the visiting company. It is an opportunity for you and your group to meet these experienced actors and discover more about them and the production.

If you are interested in attending this free event please contact Norwich Theatre Royal Education department to receive further details and to book your place.



Cost: This event is Free

CARRIE'S WAR ~

Tuesday 21st – Saturday 25th September 2010

The unforgettable story of one ordinary girl and her brother, packed off to the Welsh mining valleys at the start of war and living through extraordinary events. Nina Bawden's award-winning book has been consistently voted one of the nation's best-loved novels. This hugely successful stage adaptation featuring a thirteen-strong cast brings to life Bawden's heart-warming, funny and evocative tale. Starring Brigit Forsyth and Hannah Waterman.



Concessions: Schools: Bands C&D £7 Wed Matinee, Bands A – D £7 Thursday Matinee
Under 18s Special Price ~ Bands A&B £10, Wednesday to Thursday Evenings.
Group Rates available Wednesday to Thursday Evenings & Matinees

NORWICH THEATRE ROYAL

EDUCATION UPDATE

June 2010 – January 2011

CARRIE'S WAR ~ Free Teacher Resources

A free Teacher Resource pack to accompany this production is available and offers information and exploration of Nina Bawden's life and work/Evacuation/American soldiers in Britain; How *Carrie's War* supports National Curriculum studies on WW2 – the Home Front. (The themes addressed in *Carrie's War* will be particularly useful background for students studying History at Key Stages 1, 2 and 3.) It also includes activities to support the National Literacy Framework with emphasis on years 6 – 9, including comprehension, character study, class discussion and guided writing exercises (as well as activities for drama students – hot-seating, role-playing, improvisation). There is also a synopsis of the novel, a synopsis of the play, ideas for further reading and information, web links, press quotes about *Carrie's War*, extracts from the novel and extracts from the play.

The pack is available to download online directly from their website www.carrieswar.com

CARRIE'S WAR ~ Education Workshops

Available Wednesday 22nd and Thursday 23rd September 2010 at 12.00pm – 1.00pm, in the auditorium

This workshop is to be held at Norwich Theatre Royal inside the auditorium and is led by members of the *Carrie's War* company. The company are offering two different workshops focusing on:

- World War 2 (Aimed at KS2 students)
- An exploration of how the novel *Carrie's War* has been adapted and brought to the stage (Aimed at KS3 students and above)

Both types of workshop last one hour and the company are happy to tailor their workshops to suit your group's needs. The workshops are designed for groups of a minimum of 30 students and a maximum of 250 students and are only available to those who have booked to see the show. For further details and to book your place on a workshop please contact Jason Raper, Education Manager.

 **Cost:** £2.00 per student (teachers go free)



Brigit Forsyth



Hannah Waterman

NORWICH THEATRE ROYAL EDUCATION UPDATE

June 2010 – January 2011

NORWICH THEATRE ROYAL ACTORS COMPANY presents ~

The Pillowman by Martin McDonagh

Tuesday 19th – Saturday 23rd October 2010 7.30pm at the Norwich Playhouse

The Norwich Theatre Royal's Actors Company is the only company in Norfolk dedicated to producing professional, high quality *contemporary* theatre, offering students the opportunity to experience dramas that would otherwise not be seen within our region.

A viciously funny, seriously disturbing black comedy. A writer is interrogated about the gruesome content of his short stories and their similarities to a number of child-murders that are happening in his town. The good cop/bad cop antics of his interrogators mask a very dark undertone as the author is pressured into revealing the events of his own childhood that inspired his writing.

"McDonagh's invention of a new comedy-horror genre and his virtuoso technical skills leaves most playwrights gasping... For those with strong stomachs it's horribly watchable" Independent on Sunday

"An extraordinary play. Hauntingly, horribly entertaining" Mail on Sunday

Please note the play contains scenes and language that may offend. Suitable for ages 16+



Concessions: Students £10

Student group bookings of 10 or more £8

NORWICH THEATRE ROYAL ACTORS COMPANY ~

Post-show Question and Answer Event – FREE

Thursday 21st October 2010 in the Norwich Playhouse Auditorium

This free event (lasting approximately ½ an hour) due to take place directly after the evening performance offers the opportunity for students, along with other members of the audience, to speak to both cast and director about what they have just seen and any aspect of the production process.

NORWICH THEATRE ROYAL ACTORS COMPANY ~

In-School Workshops (Year 12 and above)

Available Wednesday 20th – Friday 22nd October 2010

These workshops are designed to help encourage an interest and enjoyment of contemporary theatre, develop an understanding of different theatrical styles and genres whilst offering opportunities for students to work practically alongside professionals from within the industry. Students will examine the journey a director and cast make to get a contemporary play off the page and into the theatre. Each workshop is led by a cast member and director.

Workshops are designed for groups of up to approximately 25 students and are suitable for Drama students aged 16 and above.



Cost: Half day Workshop (2 hours) £120 + VAT

For more information or to book a workshop, please contact Jason Raper on 01603 598523 or email j.raper@theatreroyalnorwich.co.uk

NORWICH THEATRE ROYAL EDUCATION UPDATE

June 2010 – January 2011

DANCE

SLANTEDDANCE COMPANY
DANCE WORKSHOPS

slanted dance

Norwich Theatre Royal is excited to be collaborating with slanteddance throughout 2010 as their Associate Dance Educators. Throughout the year they will be touring schools and running workshops that accompany visiting productions to the theatre that are not providing education activities themselves.

slanteddance is an energetic, exciting and refreshing dance company. The company is dedicated to expanding and developing educational opportunities for schools, colleges and youth groups.

The team consist of professionally trained dancers who are fully qualified and highly experienced in both performance and educational work. The team come from various backgrounds and lead workshops for **students and teachers**. All sessions are led by a specialist and highly experienced tutor. slanteddance aim to have **2 teachers at every workshop** to ensure that each school utilises the workshop fully.

slanteddance run workshops in school halls/gyms or alternatively at Central Norwich Dance Studios. Please contact admin@slanteddance.co.uk to discuss further.

Throughout Summer/Autumn 2010 they will be offering workshops that complement Norwich Theatre Royal's forthcoming productions. This season they will be offering:

Workshops for students

- Rocky Horror Show
- Room on the Broom, Little Big Club (See our Junior Newsletter for further details - <http://www.theatreroyalnorwich.co.uk/educationlearning/educationnewsletters.aspx>)
- Man in the Mirror
- Oklahoma!

Please check individual production information for details.

50% discount to early bookers!

slanteddance have received funding from Youth Dance England (YDE) to provide dance workshops to schools in Norfolk. The first 6 schools to book will receive up to 50% discount on the workshops.

If you have a group or workshop idea that is not included in this booklet then please contact us. We are keen to devise flexible workshops, offering unique programmes based around each group's needs and ideas. These range from technique classes through to repertoire and set studies and choreographic workshops.

NORWICH THEATRE ROYAL

EDUCATION UPDATE

June 2010 – January 2011

SLANTEDDANCE COMPANY ~ TEACHER WORKSHOPS

slanteddance offer a range of staff development workshops especially designed for freelance, youth and schools teachers. If you would like more information regarding these workshops then please do not hesitate to contact either slanteddance directly, or the theatre's education department.

 **Workshop cost:** Full day workshop £120

Contact admin@slanteddance.co.uk

Telephone: 07970 030 418

SLANTEDDANCE COMPANY ~ School Affiliation

slanteddance are offering teachers and schools a chance to become affiliate members to our company. Throughout each academic year, School Affiliate members will benefit from 2 workshops throughout the academic year (school time or after school clubs) at a discounted rate of £200 per day (saving £40).

Each teacher and school will receive an education resource pack that will offer exercise and activity ideas and plans. Affiliated schools will also be invited to perform at youth events across the County.



Meg Howard & Bryony Moore

"All pupils were focused and were enthusiastic to learn and develop dances. I was amazed at how quickly the class picked up the creative routines – this was down to the flexible teaching style, which meant all pupils were engaged. Bryony is definitely made for teaching. The class loved her!

Vicky Buxton – Teacher, St. Williams Primary School.

NORWICH THEATRE ROYAL

EDUCATION UPDATE

June 2010 – January 2011

RUSSIAN ICE STARS ~ Snow White on Ice

Tuesday 15th – Saturday 19th June 2010

The world famous Russian Ice Stars will take you on a magical journey to the heart of the best-loved tale of all time, Snow White, on ice.

The original story of an enchanted mirror, a beautiful girl, the ultimate Prince Charming and a shiny, red apple comes to life on ice, with ballet, gymnastics and aerial aerobatics to create a breathtaking and mesmerising experience.



Concessions: Under 18's Special Price: Bands A – B £8.00 off Tuesday to Thursday evenings
Group Rates available Tuesday to Thursday evenings



Irina Tkachuk as Snow White

RUSSIAN ICE STARS ~ Company Class

Available Tuesday – Friday, in the Auditorium

Have the opportunity to observe the skaters as they perform their daily training session on stage. These events only available to those attending a performance of *Snow White on Ice*.



Cost: These events are Free

For further details and to book your place please contact Jason Raper, Education Manager.

NORWICH THEATRE ROYAL

EDUCATION UPDATE

June 2010 – January 2011

ENGLISH YOUTH BALLET ~ *Sleeping Beauty*

Friday 2nd – Saturday 3rd July 2010

English Youth Ballet returns to Norwich Theatre Royal with their production of *Sleeping Beauty*.

An enchanting full-length ballet featuring an impressive cast of up to 100 local young dancers. Enjoy this version of *Sleeping Beauty* updated from the original production and starts in the year 1912, instead of the original woodland and nymphs vision scene she is innovatively put in a cryogenic state, taken to the Arctic, looked after by the Cryonites (ice fairies) and later discovered by a royal Arctic explorer.

The policy of English Youth Ballet is to perform full-length productions of classical ballet in the regional theatres of the UK, and to give young dancers outside London an opportunity to perform within a professional setting.



Concessions: Under 18's Special Price: Bands A – B £1.50 off all performances,
Group Rates – all performances

ENGLISH YOUTH BALLET ~ *Sleeping Beauty* Dress Rehearsal + Question and Answer Event

Friday 2nd July 2010 at 2.00pm

This is an opportunity to watch the dress rehearsal of *Sleeping Beauty*. Please note that places are limited as seating is in the circle only and tickets are available to school groups only. Please book your tickets through the Education Department.

There is also a **free Q&A event** with members of the company and the company manager immediately after the performance of the Dress rehearsal from **4.20pm to 4.50pm**. If you are interested in attending this free event please contact Norwich Theatre Royal Education department to receive further details and to book your place.



Cost: All tickets for the dress rehearsal are £3.00 each.

NORWICH THEATRE ROYAL

EDUCATION UPDATE

June 2010 – January 2011

MATTHEW BOURNE'S SWAN LAKE ~

Thursday 9th – Saturday 11th September 2010

This multi-award winning modern day classic returns to Norwich. Collecting over 30 international theatre awards including three Tonys, this ground breaking production is perhaps best-known for replacing the traditional corps de ballet with a menacing male ensemble. Matthew Bourne blends dance, humour and spectacle with extravagant, award winning designs by Lez Brotherston, to create a provocative and powerful *Swan Lake* for our times.



Concessions: Under 18s Special Price ~ Bands A&B £6.00 off matinee only
Group Rates available Saturday Matinee only

MATTHEW BOURNE'S SWAN LAKE ~ Free Teacher Resources

A free Teacher Resource pack to accompany this production is available and contains a biography of Matthew Bourne and his New Adventures, Tchaikovsky and the music, Matthew Bourne's *Swan Lake*, a tour history and recommended resources.

The pack is available to download online directly from their website www.new-adventures.net

MATTHEW BOURNE'S SWAN LAKE ~ RE:BOURNE (ADVENTURES IN DANCE) ~ In-school Workshops

Available Friday 10th September 2010 and the week beginning Monday 13th September 2010

These workshops are suitable for people aged 14 and over and are particularly relevant for students studying GCSE or A-Level Dance and students studying Performing Arts or Expressive Arts. The workshops are led by two dancers from the New Adventures Company and have been specially designed throughout the *Swan Lake* rehearsal process, but accommodating flexibility for the age and ability of the participating groups.

If you would like to book a workshop (or for further information please contact Norwich Theatre Royal's Education Department on 01603 598523 or email: j.raper@theatreroyalnorwich.co.uk)

MATTHEW BOURNE'S SWAN LAKE ~ Post-Performance Talk

Friday 10th September 2010 after the performance, in the auditorium

This free event (lasting approximately ½ an hour) due to take place directly after the evening performance offers the opportunity for students, along with other members of the audience, to speak to both members of the company more about Matthew Bourne, Re:Bourne and the works being performed.



Cost: This event is free but you must book in advance through the Box Office.

NORWICH THEATRE ROYAL

EDUCATION UPDATE

June 2010 – January 2011

RAMBERT DANCE COMPANY ~ Awakenings Tour 2010


Wednesday 13th – Friday 15th October 2010

Rambert Dance Company will celebrate its latest visit to Norwich Theatre Royal with a programme brimming with music and movement. Rambert's 22 dancers are considered to be some of the finest and most versatile in the world, performing a wide range of styles with precision and flair. The Company believes in the power of live music to enrich the senses and is the only modern dance company to permanently tour with an orchestra.

Rambert's latest work promises to be another inspirational and musically outstanding piece of dance.

Awakenings – Choreographed by Aletta Collins, Music by celebrated American composer Tobias Picker

The Art of Touch – A revival of Siobhan Davies' Fast Moving and award winning piece.

 Concessions: Schools: Bands C&D £6 First Night & Thursday Matinee
Under 25s Special Price ~ Bands A&B £8 First Night
Group Rates available for all Performances



Signed performance: Friday 15th October, 7.30pm (Signer: Paul Whittaker)

RAMBERT DANCE COMPANY ~ Limelighters – Over 50's Workshop

Friday 15th October 2010 @ 1.00pm – 3.00pm, at The Garage

This is a practical dance workshop for anyone aged 50 or over and is based on the current repertoire of Rambert Dance Company and will take place on **Friday 15th October 2010 @ 1.00pm – 3.00pm** at Dance Studio 3, The Garage, Chapelfield North, Norwich.

Participants will get an introduction to the company (a brief insight into the history and the productions showing at Norwich) followed by an accessible workshop with warm-up, a chance to learn repertoire and creative tasks concluded with a sharing and a cool-down. The workshop will be adjusted to suit the needs of the group. There will also be a Q& A session at the end.

The session is suitable for complete beginners, and also those who have some dance experience, in the past or recently. No need for anyone to feel too old or unfit!

 Cost: £11.50 per person

If you would like to reserve your place or for further information please contact Norwich Theatre Royal's Education Department on 01603 598523 or email: j.raper@theatreroyalnorwich.co.uk

NORWICH THEATRE ROYAL

EDUCATION UPDATE

June 2010 – January 2011

RAMBERT DANCE COMPANY ~ Pre-show Discussion ~

Thursday 14th October 2010 @ 6.30 – 7.00pm, in the Auditorium

This discussion will be led by Rambert's Artistic Director, Mark Baldwin, and is your opportunity to discover more about Rambert Dance Company and the works being performed. If your group would like to provide questions beforehand to the Theatre Royal education department these can then be passed to Mark Baldwin in preparation.



Cost: This event is free but you must book in advance through the Box Office.

RAMBERT DANCE COMPANY ~ Secondary Teacher INSET

Tuesday 12th October 2010 @ 4.30 – 6.30pm, venue to be confirmed

This Teacher INSET offered by Rambert is an opportunity for Secondary School dance teachers to learn new skills and develop confidence in teaching contemporary dance in school. The workshop will be focussing on *The Art of Touch* and will include:

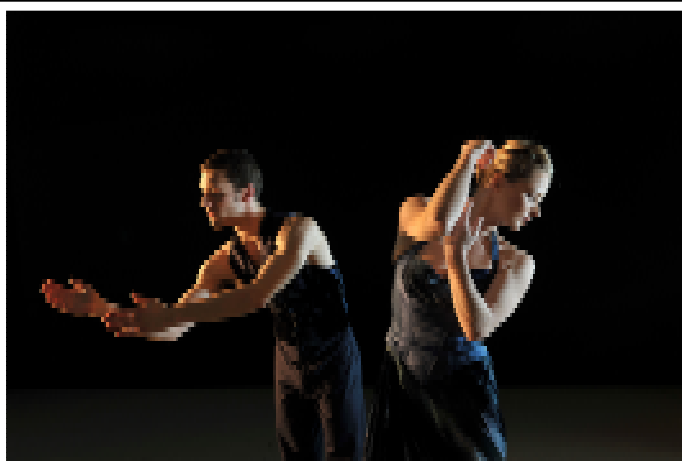
- A dance warm-up based around Rambert Dance Company's training techniques
- Learning movement phrases from Rambert's *The Art of Touch*
- Developing creative tasks that can be used by students to create their own choreography.

Participants will also receive a free resource pack, School Theatre Visit Pack and a copy of Meeting Point, Rambert's bi-annual magazine.

If you or any of your colleagues are interested in attending this INSET please register your interest by contacting Norwich Theatre Royal's education department either by phone, email or letter at the earliest opportunity as this promises to be a very popular INSET and places are limited.



Cost: £15.00 per teacher



The Art of Touch - Photo by Huao Glendinnina

For details of events and workshops call the Education Department on 01603 598523
To book tickets for all performances call the Box Office on 01603 630000

NORWICH | THEATRE | ROYAL

NORWICH THEATRE ROYAL

EDUCATION UPDATE

June 2010 – January 2011

RAMBERT DANCE COMPANY ~In-school Workshops – Available Wednesday 13th – Thursday 14th October 2010

To support the work of the Company in performance, Rambert Learning and Participation have a bank of highly skilled dancers and teachers who lead workshops based on Rambert repertoire, offering a programme of education activities to support dance work in schools and colleges.

Rambert are currently offering workshops in: *The Comedy of Change* – Mark Baldwin / *A Linha Curva* – Henry Oguike / *The Carnival of the Animals* – Siobhan Davies / *The Art of Touch* – Siobhan Davies / *Swansong* – Christopher Bruce / *Hush* – Christopher Bruce

They are suitable for people aged 10 and over with a maximum of 30 students in any workshop and are particularly relevant for:

- students studying GCSE or A-Level Dance
- students studying Performing Arts or Expressive Arts

Each workshop will include an introduction to the Company during which, a short 10 minute film called 'A Day in the Life' will be shown, setting the repertoire into the context of a daily working dance company. They will then lead a short technical warm-up, either to introduce contemporary movement vocabulary or to stretch the technical ability of more able groups. This would be followed by an introduction to the specific piece of repertoire to be explored - depending on the ability and experience of the group some shorter sections of the repertoire would be taught. The rest of the workshop would be dedicated to exploring some of the themes, motifs and choreographic devices used by the company in rehearsal so that the group can work creatively, generate some new movement material or stretch current choreographic techniques. This is followed by a cool-down.

Workshop Costs:

- Half Day of Dance (max. of 3 hours) - **£200** + VAT
- Full Day of Dance (max. of 6 hours including 1 hour lunch) - **£300** + VAT
- Five Day Residency - **£1,300** + VAT (this is flexible depending on the project)
- The animateur will invoice you for costs incurred, mainly travel (either a return train ticket or petrol is calculated at 40p per mile) and if your school is not local to London they will also invoice you for their accommodation (**£45.60**).



However, if you have previously had a workshop with Rambert, or if you are bringing a group of students to see this production of Rambert, then you are entitled to a 10% discount on all educational workshops (this does not include travel or accommodation costs).

NORWICH THEATRE ROYAL

EDUCATION UPDATE

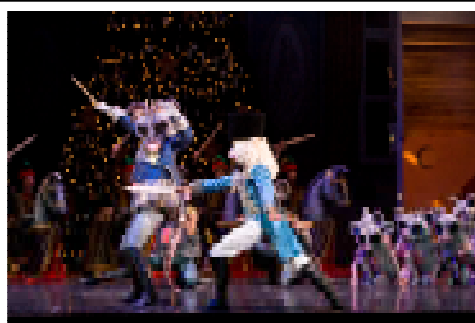
June 2010 – January 2011

NORTHERN BALLET THEATRE ~ The Nutcracker

Tuesday 2nd – Saturday 6th November 2010

This famous ballet takes place on Christmas Eve, when a mysterious Nutcracker Doll leads Clara on a fantastical journey through exotic lands. Beautiful classical dancing, colourful costumes, and spectacular sets bring Clara's adventures vividly to life, whilst the Northern Ballet Theatre Orchestra plays Tchaikovsky's famous score including The Waltz of the Flowers and The Dance of the Sugar Plum Fairy.

Join Clara and her handsome prince as they meet the beautiful Sugar Plum Fairy and battle the wicked mouse king in a magical land of dancing snowflakes.



Concessions: Schools Bands C&D £7 Thursday Matinee Only
Under 18s Special Price Bands A&B £10 Off Tuesday – Thursday Evenings and Matinees
Group Rates Tuesday – Thursday Evenings and Matinees

NORTHERN BALLET THEATRE ~ The Nutcracker

Pre-Performance Talk

Wednesday 3rd November 2010 6.30pm – 7.00pm, in the auditorium

Discover more about Northern Ballet Theatre and the work being performed.



Cost: This event is free but you must book in advance through the Box Office.

NORTHERN BALLET THEATRE ~ The Nutcracker

Ballet Explored

Thursday 4th November 2010 @ 11.15am – 12.45pm, in the Targetfollow Room/auditorium

Find out more about the production, the company and then watch the dancers' daily training session on stage. This event is open to those attending a performance of *The Nutcracker* and although not suitable for all school groups there are a limited number of spaces reserved for small groups of students with a relevant interest in dance.



Cost: £3.50 per person

For further details and to book your place please contact Jason Raper, Education Manager.

NORWICH THEATRE ROYAL

EDUCATION UPDATE

June 2010 – January 2011

NORTHERN BALLET THEATRE ~ The Nutcracker

Schools' Production Event

Thursday 4th November 2010 @ 4.45pm - 5.15pm, in the Auditorium

This production event is a Northern Ballet Theatre activity, offering ticket-holders an opportunity to gain a deeper and richer understanding of how a production is technically put together. This event follows on directly after the midweek matinee at Norwich Theatre Royal and is suitable for school groups with tickets to see a performance of *The Nutcracker*, whether they have already seen the show or are going to see the show.

Led by Dance Education Officer, Caroline Burn and members of the technical team, the event includes both an informative talk and practical demonstration about how the production is put together. Technicians will be on stage to demonstrate lighting effects and flying of scenery from the production and it will provide ticket holders with an appreciation of the production at a different level, including an understanding of the making of a show.



Cost: This event is Free.

NORTHERN BALLET THEATRE ~ The Nutcracker

Limelighters – Over 50's Workshop

Friday 5th November 1.00pm - 3.00pm, at The Garage

This is a practical dance workshop based on Northern Ballet Theatre's production of *The Nutcracker* and will take place on Friday 5th November 2010 from 1.00pm — 3.00pm at Dance Studio 3, The Garage, Chapelfield North, Norwich.

The session is suitable for complete beginners, and also those who have some dance experience, in the past or recently. No need for anyone to feel too old or unfit!



Cost: £11.50 per person

If you would like to reserve your place or for further information please contact Norwich Theatre Royal's Education Department on 01603 598523 or email: j.raper@theatreroyalnorwich.co.uk

NORTHERN BALLET THEATRE ~ The Nutcracker

Free Teacher Resources

In preparation for your visit to Norwich Theatre Royal and Northern Ballet Theatre, a free Teacher Resource pack to accompany this production is available.

The pack is available to download online directly from their website:

www.northernballettheatre.co.uk/schoolsandteachers

NORWICH THEATRE ROYAL

EDUCATION UPDATE

June 2010 – January 2011

NORTHERN BALLET THEATRE ~ The Nutcracker In-School Workshops

Available from Monday 1st November – Wednesday 3rd November 2010

Northern Ballet Theatre is excited to be returning to the Norwich area with our school workshop programme to accompany the production, *The Nutcracker*.

School workshops will be an excellent introduction to the production of *The Nutcracker*; the workshops focus on character development through movement by stimulating pupils' creativity and musicality.

The workshops available will be led by an NBT dance artist accompanied by a musician, and will include a fun warm-up and creative exploration of repertoire from the show.

The workshops are for people aged 8 and above, two sessions per day with up to two groups, a maximum of 30 participants per group. Previous dance experience is not required and we are delighted if members of staff participate with their group.



The full-day workshop costs:

- £375 plus VAT or
- £310 plus VAT for affiliated schools
(Remember: you can affiliate your school for FREE!)

NORTHERN BALLET THEATRE ~ School Affiliation

Schools can affiliate with Northern Ballet Theatre for free, over a period of two years. During this time you will benefit from two workshops at a reduced rate of £310 + VAT (saving £65 on normal prices) and two free places on two Teacher INSET sessions (subject to availability). Affiliated schools receive resource packs to accompany workshops, are the first to receive information about future projects and keep up to date with quarterly copies of the company magazine, Northern Exposure.

To book a workshop or to affiliate your school to Northern Ballet Theatre please contact their Learning and Access Co-ordinator, Jo Dean on 0113 274 5355 or e-mail jo.dean@northernballettheatre.co.uk

NORWICH THEATRE ROYAL EDUCATION UPDATE

June 2010 – January 2011

MUSICALS

Richard O'Brien's ROCKY HORROR SHOW ~ Monday 7th – Saturday 12th June 2010

Follow squeaky-clean sweethearts Brad and Janet on an adventure they'll never forget, with the scandalous Frank 'n Furter, rippling Rocky and vivacious Magenta. Get ready for a night of fun, frolics and frivolity in this thrilling production of Richard O'Brien's classic script!

Be warned, this show has rude parts. Recommended for Year 11 and above only



Concessions: Group Rates: Monday – Thursday performances.



Signed performance: Friday 11th June, 8.30pm (Signer: Andy Higgins)

SLANTEDDANCE ~ Rocky Horror Show Workshops Available Thursday 10th and Saturday 12th June 2010

slanted dance

slanteddance is offering a fun and demanding workshop for anyone who has a love for Musical Theatre and *The Rocky Horror Show*! In collaboration with an associate company member who is performing on this tour, the workshop, aimed at students aged 17 upwards, will offer technically demanding routines and a real insight into working in the world of Musical theatre.



Workshop prices:

£120 + VAT for a 2-hour workshop + travel costs (or Studio hire at Central Norwich Dance Studios)

£240 + VAT for a 4-hour workshop + travel costs (or Studio hire at Central Norwich Dance Studios)

Contact admin@slanteddance.co.uk

Telephone: 07970 030 418



Photo: Brad and Janet in Rocky Horror Show

For details of events and workshops call the Education Department on 01603 598523
To book tickets for all performances call the Box Office on 01603 630000

NORWICH | THEATRE | ROYAL

NORWICH THEATRE ROYAL

EDUCATION UPDATE

June 2010 – January 2011

MAN IN THE MIRROR ~

Tuesday 3rd – Saturday 7th August 2010

This show celebrates the amazing music of the King of Pop. This high octane production spans over three decades starting with the early days of the Jackson Five through to some of the greatest hits in pop history...

Featuring an international cast of world class performers Man in the Mirror has jaw-dropping special effects, eye-popping multi-media displays, breathtaking vocalists and explosive choreography.



Concessions: Under 18s Special Price ~ Bands A-D half price if bought with one adult ticket, and are available Wednesday to Thursday and Matinees
Group Rates available Wednesday to Thursday and Matinees

SLANTEDDANCE ~ Man in the Mirror Workshops

Available Monday 2nd – Tuesday 10th August 2010

slanted dance

Do you think you can move like Michael Jackson? If so come and learn authentic moves to the amazing music of the king of pop. The workshops will develop coordination, creativity and encourage fitness. Workshops are aimed at 6-11 year olds.



Workshop prices:

£120 + VAT for a 2-hour workshop + travel costs (or Studio hire at Central Norwich Dance Studios)

£240 + VAT for a 4-hour workshop + travel costs (or Studio hire at Central Norwich Dance Studios)

Contact admin@slanteddance.co.uk

Telephone: 07970 030 418



REFRESHMENTS FOR SCHOOL PARTIES

Did you know that you can pre-book a large ice-cream or refreshment order for your group and have it made up ready for collection at the beginning of the interval? The Box Office will send you details of stock and prices with your group booking.

PACKED LUNCHES

If it is necessary for your group to eat a packed meal at the Theatre Royal, please contact the Duty Manager beforehand on 01603 598540.....we can supply very large plastic bags for your rubbish!



NORWICH THEATRE ROYAL

EDUCATION UPDATE

June 2010 – January 2011

OKLAHOMA ~

Tuesday 14th – Saturday 18th September 2010

Oklahoma perfectly integrates song, dance and story to tell the tale of farm girl Laurey and the two rivals for her affections, happy-go-lucky cowboy Curly and the sinister farm hand Jed.

The show contains a sumptuous and rousing score full of wonderful songs such as *Oh, What a Beautiful Morning*, *The Surrey With The Fringe On Top*, *People Will Say We're In Love*, and the final rousing chorus of Oklahoma. As the music soars the audience is carried along on the emotional journey of one of the most famous love stories in musical history.

Starring Marti Webb as Aunt Eller (*Blood Brothers*, *Tell Me On a Sunday*, *Evita*, *Cats* and many more)

Mark Evans as Curly, best known as runner up in the BBC's *Your Country Needs You*, the search for a singer to represent Britain in Eurovision.



Concessions: Under 18s Special Price ~ Bands A&B £6 off, Tuesday - Thursday Evenings & Matinees.
Group Rates Tuesday to Thursday Evenings & Matinees



Signed performance: Saturday 18th Sept, 2.30pm (signer Keren Seabroock)



Audio Described performance: Saturday 18th Sept, 2.30pm (Mind's Eye)

OKLAHOMA ~ Question & Answer Event

Wednesday 15th October 2010 after the matinee performance, in the auditorium

Discover more about the cast and company as well the production being performed.



Cost: This event is free but you must book in advance through the Education Department.

OKLAHOMA ~ Open Children's Workshop

Saturday 14th September 2010 at 10.30am – 12.30pm, in the Targetfollow Room

The Theatre Royal is hosting an Open Children's Workshop on Saturday 14th September, facilitated by Joseph Pitcher who is playing Will Parker in the UK Productions national tour of *Oklahoma*. As well as being an a performer Joseph is also a fully qualified teacher of performing arts and has taught at many of the country's leading dance and drama schools. This workshop is open to individuals and groups.

If you know of anyone who would be interested in participating in this workshop and would like more information please contact Jason Raper on 01603 598523 or email j.raper@theatreroyalnorwich.co.uk.

NORWICH THEATRE ROYAL

EDUCATION UPDATE

June 2010 – January 2011

OPERA

GLYNDEBOURNE ON TOUR PRESENTS –

Don Giovanni

by W A Mozart

Tuesday 16th & Friday 19th
November 2010

La Cenerentola

by G Rossini

Wednesday 17th & Saturday 20th
November 2010

The Coronation of Poppies

by C Monteverdi

Thursday 18th
November 2010

Glyndebourne on Tour returns to Norwich with three spectacular productions. Showcasing some of the best young talent on the operatic stage, the company presents two much loved works of musical and dramatic beauty alongside an exciting new production direct from this summer's Glyndebourne Festival. *(Please note that supertitles are not visible from Stalls seats Rows Q – W)*

Don Giovanni

Sung in Italian with English Supertitles.

Running time: Approximately 3 hours and 15 minutes including a 20 minute interval

La Cenerentola

Sung in Italian with English Supertitles.

Running time: Approximately 3 hours including a 20 minute interval

The Coronation of Poppies

Sung in Italian with English Supertitles.

Running time: Approximately 3 hours and 15 minutes including a 20 minute interval



Concessions: Group Rates Tuesday to Thursday

GLYNDEBOURNE ON TOUR ~ Pre-Performance Talks - Free

Tuesday 16th November ~ *Don Giovanni* / Wednesday 17th November ~ *La Cenerentola* / Thursday 18th November ~ *The Coronation of Poppea*. All talks to be held in the Town Close Room @ 6.15pm–6.45pm

Discover more about Glyndebourne and the works being performed. Please note that places are limited.



Cost: This event is free to ticket holders but you must book in advance through the Box Office.

GLYNDEBOURNE ON TOUR ~

Opera Experience – Secondary Schools Workshops

Don Giovanni ~ Wednesday 18th November *La Cenerentola* ~ Thursday 19th November

Workshops to be held at Norwich High School for Girls from 2.00pm – 5.00pm

Opera Experience, for secondary schools, introduces young people to opera through a combination of engaging workshop activities and attending *Glyndebourne on Tour* performances. For a total price of £10 per student/teacher, students attend a workshop led by a team from Glyndebourne, and on the same day, attend an opera performance. The workshops are designed to allow the students to get the most out of the evening's opera. Teachers around the country appreciate not only the educational value, but also the sheer enjoyment experienced by their students at both workshop and performance. A teachers' pack will be available on each of the operas. Please visit their website (www.glyndebourne.com/education/) for online resources and more information about the education work they do and to book a workshop for your class, or ring Glyndebourne Education on 01273 815 023.

NORWICH THEATRE ROYAL EDUCATION UPDATE

June 2010 – January 2011

NORFOLK SCHOOLS PROJECT

NORFOLK SCHOOLS PROJECT ~ La Cenerentola ~

FREE TEACHERS' WORKSHOP Monday 20th September 2010 from 4.00PM – 6.00PM

To be held at Fairhaven Primary School, School Road, South Walsham, Norwich, Norfolk, NR13 6DZ

In September, Norwich Theatre Royal will start working with 3 Schools in Norfolk to produce a show based on themes from Rossini's *La Cenerentola*. As part of this project we will be running a free Teacher's workshop after school on **Monday 20th September 2010**. The workshop marks the starting point of our *La Cenerentola* project and is designed to help teachers who may be interested in developing their skills, using opera in the classroom or finding out more about our work with local schools.

This workshop aims to provide teachers with practical and written material, which can be taken back to school and taught in the classroom. The workshop is designed especially for non-music specialists, and all the work is linked to music in the National Curriculum at Key Stage 2 in relation to Performing, Composing, Listening and Appraising. Whether you are a music specialist or have no experience in these fields, you will find this workshop is perfect for stimulating new ideas for classroom work, not just for music but also for cross-curricular work. This session starts off our Autumn Norfolk Schools Project but also stands alone as a valuable session for teachers not directly involved in the project.

This what some of our previous participants said:

- ♦ **I came away feeling (a) I could sing (b) I could get pupils to sing (c) Opera was for everyone.**
- ♦ I was very impressed by the course and it improved my confidence a great deal. I am not very musical but even I will be able to use the materials.
- ♦ **The workshop reminded me what a talented bunch of people teachers are and what few opportunities we get to show off (and enjoy!) our creative skills.**
- ♦ I think it is really important that teachers participate in the activities. We often ask children to do things that we find difficult ourselves and it helps people to empathize with the children.
- ♦ **Excellent in terms of leading a group to feel confident. I'm a strong advocate of learning from 'true experts'. Very high quality.**

All teachers/teaching assistants are very welcome but numbers are limited; please contact our Education Department to book your place or for more information. By participating in the workshop you can also state your interest in having a future Norfolk Schools Project in your school.

NORWICH THEATRE ROYAL EDUCATION UPDATE

June 2010 – January 2011

PANTOMIME

JACK AND THE BEANSTALK ~

Tuesday 14th December 2010 – Sunday 16th January 2011

This year Norwich Theatre Royal presents our version of the classic tale of *Jack and the Beanstalk*. Get ready to meet *Dame Trott*, *Simple Simon* and the whole of the *Barney Bailum Family Circus* as they pull into Norwichville. With help from friends, livestock and some magic beans will Prince Jack meet his Jill, fall in love and live happily ever after? Book early to find out and avoid disappointment.



Concessions: Under 18s Special Price: Band A – D £1.50 off on certain performances, Group Rates on certain performances. Please check brochure for full details



Signed performances: Saturday 15th January 2.30pm and 7.30pm (Signer: Jim Dunne)



Audio Described performance: Sunday 9th January 1pm (Mind's Eye)

JACK AND THE BEANSTALK ~ Question & Answer Events

Thursday 6th and Thursday 13th January @ 1.30pm - 2.00pm, in the auditorium

Following on from the success of previous years these Q&A events are an opportunity for members of your party to ask any questions they may have for the cast of *Jack and the Beanstalk*. Prior to the show we will provide you with question cards for you and your students to complete and return to us at the theatre so that we can prepare for the event. Remember you can ask the cast *anything*!

In between the end of a 10.30am performance and this event your party may eat their packed lunches (they must provide their own packed lunches) in the auditorium while the actors catch their breath and the technical staff re-set the stage. On the day we will provide you with sufficient bin-liners to aid collection of all rubbish from the lunches. The actual event will usually last for half an hour.



These events are free to ticket holders but you must book through the Education Department as places are limited.

NORWICH THEATRE ROYAL EDUCATION UPDATE

June 2010 – January 2011

EDUCATION INFORMATION

NORWICH THEATRE ROYAL WEBSITE ~

Norwich Theatre Royal launched its new website at the end of 2009 and it has information on all of the events and activities that the education department are offering in 2010. These include:

- Guidelines for School Visits
- Forthcoming Productions
- Norfolk Schools Project
- Work Experience
- Backstage Tours and Marketing talks
- Child Protection Policy
- Risk Assessments
- Theatre Arts Courses
- The History of Norwich Theatre Royal
- Norfolk Education Network

For further details please visit www.theatreroyalnorwich.co.uk and click on the Education & Learning link.

WORK EXPERIENCE PLACEMENTS ~

We run a very popular Work Experience scheme here at the theatre, where students (Year 10 and above) can spend a week (maximum 40 hours) with our resident Stage Manager and his crew learning about all the backstage technical aspects of running a theatre. We get many enquiries a long way in advance. If you are interested in work experience here at the theatre for one of your students please let us know as soon as you are aware of your work experience placement dates and we will try and accommodate you. Unfortunately, we are only able to take one placement per week.

Available placements until January 2011:

11th – 15th October, 1st – 5th November, 8th – 12th November, 20th – 24th December

Occasionally, we also take work experience students in the Front of House Department, although these are for those studying Customer Care or Hospitality.

Unfortunately, many schools run their Work Experience Schemes at the same time and therefore we have to turn down a lot of students who wish to experience work at the theatre. If you would like one of your students to be placed here please try and organise this as early as possible to avoid disappointment. Please bear in mind that the Theatre Royal will not book a Work Experience Placement without a named student.

To book a Work Experience Placement call the Education Department on 01603 598523.

NORWICH THEATRE ROYAL

EDUCATION UPDATE

June 2010 – January 2011

NORWICH THEATRE ROYAL BACKSTAGE TOURS ~

Norwich Theatre Royal now offers three separate backstage tours to visiting groups:

~**A Technical Tour** – looking at the theatre from a technical perspective

~**A General Tour** – looking at a mixture of historical, technical and social perspectives

~**A Historical Tour** – looking at Norwich Theatre Royal from a historical perspective (this includes a power-point presentation)

- The Technical and General tours normally last about an hour although this is mainly dependent upon the interest of the visiting group and can be shorter if required.
- The Historical Tour is longer than the other tours as it includes a power-point presentation. Approximate length is an hour to an hour and a half.
- In order to comply with Health and Safety regulations all tours are for a maximum of 25 people.
- All bookings to be made through the education department.
- All tours are dependent upon permission being granted from the visiting production company and Norwich Theatre Royal's technical department.
- Tours are available Monday – Friday only, show times dependent.
- If any of your group has mobility problems or listening impairments this information should be declared before the tour is finalised so the necessary arrangements for the tour can be made.
- Risk Assessments are available but pre-event risk assessment visits can also be arranged.
- Tours can be tailored to your needs. For example, if you are putting on a production at your school and would like to see how a professional theatre operates technically, then we can arrange for theatre technicians to demonstrate some of Norwich Theatre Royal's equipment.
- All tours cost £2.50 per child/ £3.50 per adult
- When bringing a school group for a tour there is no charge for teachers.



To book a tour of the theatre, or for further information, please contact the Education Department.