

**MADDER
MARKET**

**SEPTEMBER TO
DECEMBER 2010**

www.maddermarket.co.uk



Maddermarket Theatre

BOX OFFICE 01603 620917

Sponsored by

BANHAM GRAHAM

Chartered accountants & business advisers



WELCOME

I am delighted to welcome you to our new brochure, and to announce the exciting news that the Maddermarket has appointed a new director of productions.

He is Stephen Picton, an experienced actor and director who moved recently to the area and who lives in North Suffolk. Stephen has had especially close ties with the Trinity Theatre, in Tunbridge Wells. He is a talented musician, and loves musicals!

Stephen will begin working with us in early September, and his first production will be our Christmas show, the BFG. He is naturally keen to be involved in the selection of shows for our 2011 season, and for that reason we are unable to list our full programme for next year at present.

Stephen succeeds Peter Sowerbutts, whom I would like to thank for all his hard work at the Maddermarket over the last four years. The Theatre has benefited hugely from his enthusiasm and enormous talent, but he has now decided to explore new horizons. Peter is resuming his acting career, but many of you will know that he has also set up a new business as a coffee baron!

Peter will, incidentally, be performing in a lunchtime show at the Maddermarket in September, so we very much look forward to seeing him again then.

Meanwhile, we will be looking to celebrate two major milestones in style during 2011, a year in which we mark both the 100th anniversary of the formation of the Guild of the Norwich Players in 1911 – and the 90th anniversary of the opening of the Maddermarket Theatre in 1921.

The Players were formed by Walter Nugent Bligh Monck, and the Maddermarket became their third home when the neglected former Roman Catholic Chapel of St John the Baptist was converted into this Theatre! So stand by for a series of special events!

Finally, our long-awaited installation of a computerised booking system in the box office has not been without its problems. I am pleased to tell you, though, that we are very nearly there! So thank you for your patience, and for your marvellous support for this Theatre.

We have little access to external financial support, and operate almost entirely under our own steam – through our hard work, and the fabulous support of our audience members. It is no mean feat that the Maddermarket Theatre has thrived here for almost 90 years. We aim to be here for many more decades to come – and if we succeed in doing so it will be due to the continued backing of our members, and of our loyal supporters, to whom I offer my very sincere thanks and appreciation.

Averil Brennan
Chair of the Maddermarket Trust

COMING SOON

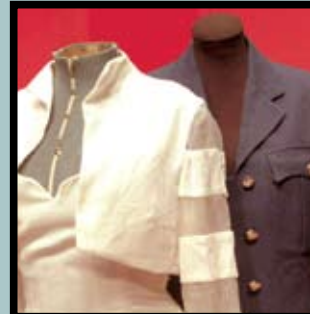
ARSENIC AND OLD LACE

BY JOSEPH KESSELRING

GRAVE EVENTS IN THE CELLAR!

AUGUST Th19 / F20 / S21 / M23 / Tu24 / W25 / Th26 / F27 / S28

■ 7.30PM PERFORMANCE ■ 2.30PM & 7.30PM PERFORMANCE



DRESS TO IMPRESS

THE BFG – THURS, DECEMBER 23 (6PM)

Wardrobe mistress Amanda Greenway leads a special discussion focusing on the process of staging this year's Christmas show from a costumier's perspective. The event takes place in the auditorium, and provides a special behind-the-scenes insight into the show which follows later that evening.

ALL SEATS: £4.00

COMING IN THE NEW YEAR...

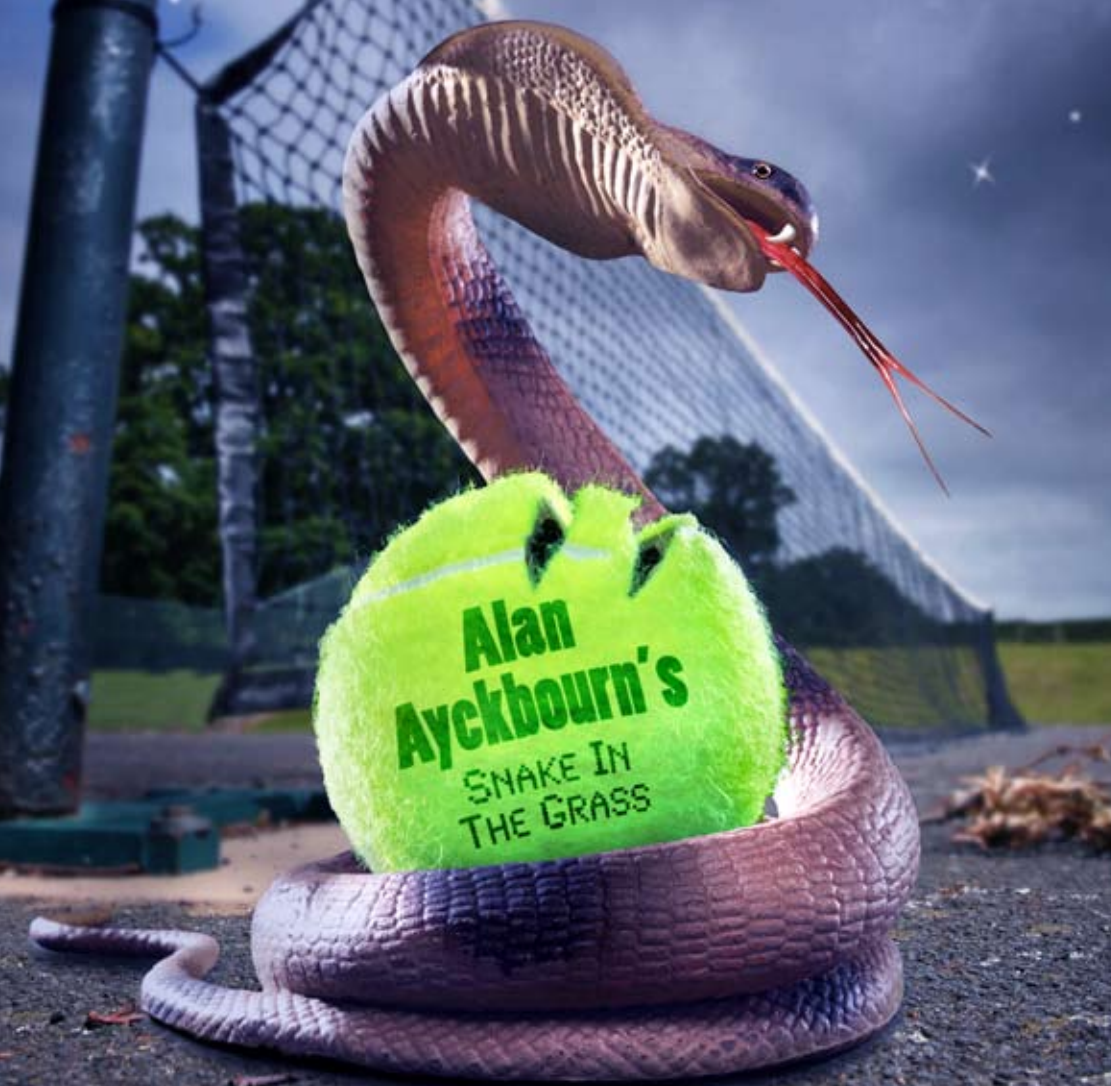
THE HOUND OF THE BASKERVILLES

ADAPTED BY TIM KELLY FROM THE THRILLER BY SIR ARTHUR CONAN DOYLE

Sir Henry Baskerville has inherited the family fortune along with its attendant curse – the murderous threat of a giant hound prowling the moors. Can the great detective Sherlock Holmes stop the beast from striking again?

JAN Th20 / F21 / S22 / M24 / Tu25 / W26 / Th27 / F28 / S29

■ 7.30PM PERFORMANCE ■ 2.30PM & 7.30PM PERFORMANCE



SNAKE IN THE GRASS

SISTERS HAUNTED BY THEIR FATHER...

TICKETS £12, £10 AND £8

Miriam has devoted herself to caring for her bad-tempered father in his declining years – assisted by a nurse, Alice. However, when the old man dies he leaves most of his wealth to another sister, Annabel, who returns from Tasmania after 30 years away. Alan Ayckbourn's 61st play – first performed in 2002 – is a 'ghost' story blending black humour, spine-tingling horror, and reflections on the darker side of life.

SEPTEMBER TH16 F17 S18 M20 TU21 W22 TH23 F24 S25

■ 7.30PM PERFORMANCE ■ 2.30PM & 7.30PM PERFORMANCE

ADAPTED BY GILES HAVERGAL



TRAVELS WITH MY AUNT

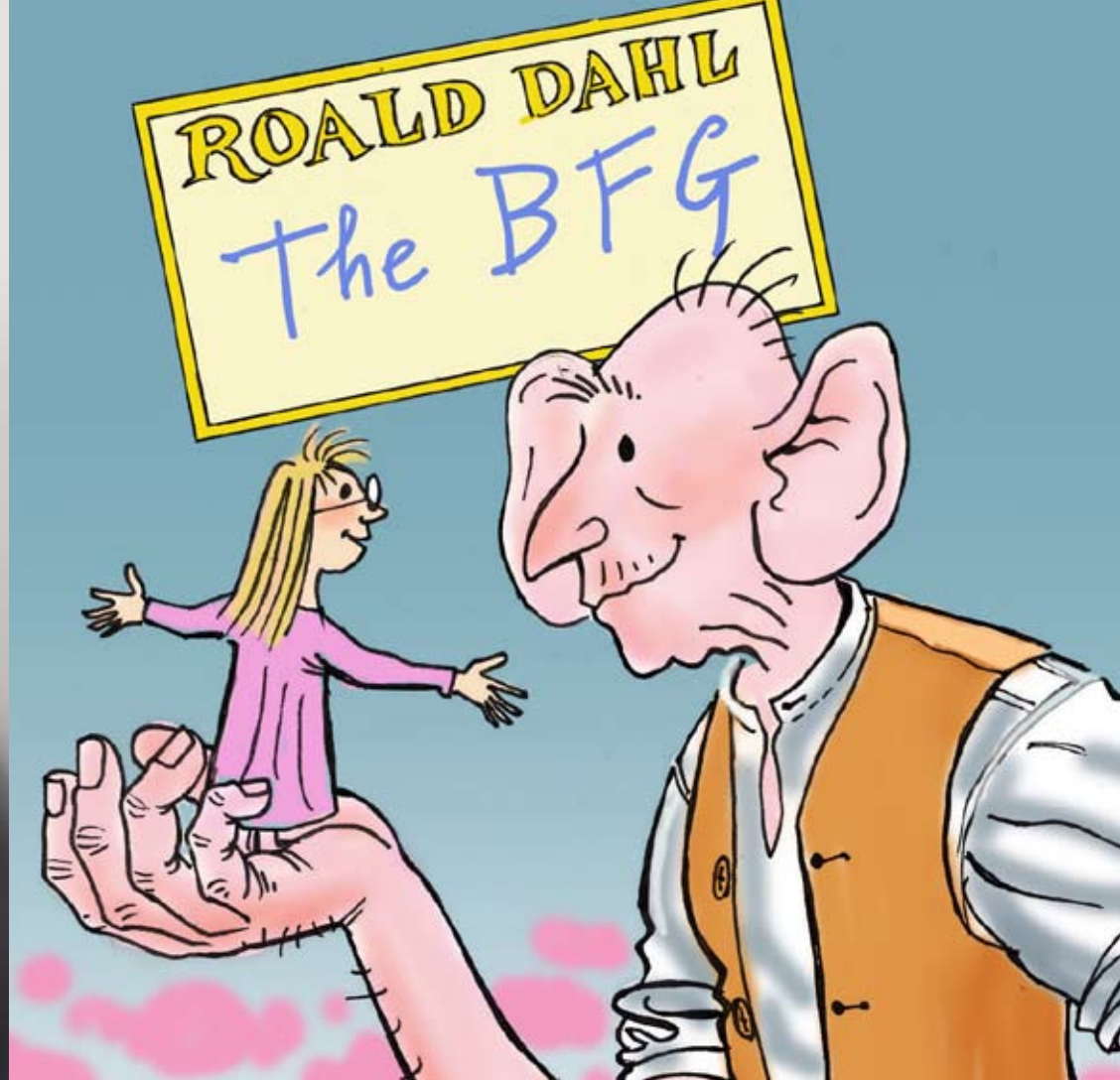
RETIRED BANK MANAGER'S WALK ON THE WILD SIDE!

TICKETS £12, £10 AND £8

Retired bank manager Henry Pulling experiences a whole new side of life when he and his Aunt Augusta - whom he has not seen for 50 years - travel across Europe, and eventually even further afield. Augusta pulls Henry away from his quiet, suburban existence into a world of adventure, crime - and the astonishing details of her highly unconventional past. Giles Havergal's adaptation of Graham Greene's novel was first performed at the Citizens' Theatre, Glasgow, in 1989.

OCTOBER TH21 F22 S23 M25 TU26 W27 TH28 F29 S30

■ 7.30PM PERFORMANCE ■ 2.30PM & 7.30PM PERFORMANCE



MEASURE FOR MEASURE

BARD'S TALE OF LUST AND HYPOCRISY IN HIGH PLACES!

TICKETS £12, £10 AND £8

Vincenzo, Duke of Vienna, leaves the city in mysterious circumstances, leaving his strait-laced deputy, Angelo, to run affairs in his absence. Angelo decides to enforce the city's harsh laws against fornication, which is punishable by death. But he turns out to be a hypocrite when he sexually blackmails the sister of the first nobleman to fall foul of the clampdown. William Shakespeare is thought to have written 'Measure for Measure' in 1603 or 1604. An array of prostitutes, pimps, prisoners and 'plods' add to the entertainment! Themes of mercy, justice and truth are all highlighted in a play usually categorised either as a comedy, or as one of the 'problem plays'.

NOVEMBER TH18 F19 S20 M22 TU23 W24 TH25 F26 S27

■ 7.30PM PERFORMANCE ■ 2.30PM & 7.30PM PERFORMANCE

THE BFG

BIG FRIENDLY GIANT BATTLES EVIL COUNTERPARTS!

TICKETS £12, £10 AND £8

This year's Christmas show sees the eagerly-anticipated arrival of the Big Friendly Giant in David Wood's adaptation of the hugely popular children's book by Roald Dahl. The story of the 24-foot-tall BFG and a little orphan girl called Sophie brings some of Dahl's most memorable characters to the stage. The BFG and Sophie team up to save England's children from the hideous child-eating giants - Bloodbottler, Fleshlumpeater, Bonecruncher, Meatripper, Childchewer and Gizzardgulper. They also get a little help from Her Majesty, The Queen, and from the heads of the army and airforce!

DEC S18 Su19 Tu21 W22 Tu23 Su26 M27 T28 W29 T30 F31 **JAN** Su2 M3

■ 7.30PM PERFORMANCE ■ 2.30PM & 6.30PM PERFORMANCE ■ 2.30PM PERFORMANCE
■ 4.00PM PERFORMANCE

Illustration by John Stokes

VISITING PRODUCTIONS



THURS SEPT 2ND: 7.30PM

RAYMOND FROGGATT

Raymond Froggatt has been in the music business for more than 40 years, and has released a new album to coincide with this latest tour. 'Froggie' writes and sings his own songs, mesmerising audience members who laugh at his stories or cry with emotion at a song that touches the heart like no other. His followers usually arrive at the venue clutching their frogs and with green scarves waving – certainly a sight to behold! An evening with Raymond Froggatt is one of pure magic! www.raymond-froggatt.com

ALL SEATS: £12.50



FRI SEPT 3RD: 7.30PM

AN AUDIENCE WITH ANN WIDDECOMBE

Larger-than-life politician, novelist and TV celebrity Ann Widdecombe delights audiences across the land with her witty and controversial speeches. Now the retired Conservative MP and former shadow home secretary brings her own show to the general public, sharing anecdotes and answering questions. www.annwiddecombemp.com

ALL SEATS: £15.00



SAT SEPT 4TH: 7.30PM

THE FLOYD EFFECT

This eight-piece tribute show spans the complete Pink Floyd canon, and includes much-loved material from 'Wish You Were Here', 'Animals', 'Meddle', 'The Wall', 'A Momentary Lapse of Reason' and 'The Division Bell'. Featuring all new projections, the show concludes with a complete performance of one of the greatest pieces of music ever written – 'Dark Side of the Moon'. An unforgettable sound and light experience that will take you on a journey from the 'Gates of Dawn' to that 'Dark Side of the Moon'. www.thefloydeffect.com

ALL SEATS: £15.00



TUES SEPT 28TH: 7.30PM

RICHARD DIGANCE

Richard Digance is quite simply one of the most entertaining acts you are ever likely to see. Brilliant, self-penned comic songs are introduced with panache, style and outrageous humour. Richard is an evergreen performer who appeals to all ages, ensuring that he remains one of Britain's top comedy and music attractions. www.richarddigance.com

ALL SEATS: £15.00

VISITING PRODUCTIONS



WED SEPT 29TH: 7.30PM

THE BLUES BAND

The Blues Band formed in 1979 to play for fun and a bit of beer money. But Paul Jones, Dave Kelly, Tom McGuinness, Gary Fletcher and Rob Townsend soon had whole new careers. Their recorded material includes both original songs and their own readings of songs from the genre's finest writers like Willie Dixon, Muddy Waters, Howlin' Wolf, and Sleepy John Estes. www.thebluesband.com

ALL SEATS: £19.00



THURS SEPT 30TH: 7.30PM

THE CHURCHFITTERS

The Churchfitters are one of the most musically inventive quartets on the scene today. Their superb, energetic show unites the rhythms of rock, pop and jazz with the universal appeal of traditional music. With three explosive voices, the use of a dozen or so acoustic instruments, and flamboyant personalities, they are taking audiences by storm throughout the UK.

www.churchfitters.com

ALL SEATS: £10.00



FRI OCT 1ST: 7.30PM

THE LOCRIAN ENSEMBLE TCHAIKOWSKY BY CANDLELIGHT

Members of the Locrian Ensemble will be suitably attired in Russian costume for this evening dedicated to the work of 19th century Russian composer Pyotr Tchaikovsky, whose music is saturated with a strong, vigorous life that is inspiring to listen to. Its rugged strength and hypnotic rhythms are underpinned by heartfelt emotion, strong melodies and richness of harmony. The Locrians perform the sweeping melodies of the 'Souvenir de Florence', a selection from the 'Nutcracker Suite', and the prelude from 'Swan Lake'. There is also a 'Sabre Dance' and Sergei Rachmaninoff's 'Vocalise'. www.locrianensemble.co.uk

ALL SEATS: £15.00



SAT OCT 2ND: 7.30PM

THE UPPER OCTAVE MOVIES AND MUSICALS

This popular group of local singers returns by popular demand with a brand new production. The Upper Octave will recreate the best of musical theatre, intertwined with iconic movie themes during this two-hour extravaganza. The programme includes songs from 'Phantom of the Opera', 'Titanic', 'Carousel', 'Anything Goes', 'Chicago' and the James Bond films. Don't miss this musical feast! www.theupperoctave.com

SEATS: £10.00 (CONCESSIONS £8.00)



COSTUME HIRE

Open to general public Tues 4-6pm, Thurs 5-7pm, Sat 11am-1pm. Other theatres and large organisations welcome. Call 01603 626292 for more information and prices.

JOIN OUR FREE MAILING LIST!

Keep up-to-date with news of Maddermarket shows and ticket discounts. Just send us a postcard with your details to Maddermarket Theatre, St John's Alley, Norwich, NR2 1DR.

VISITING PRODUCTIONS



WED OCT 6TH: 7.30PM

STEEMY DAN – REELIN' IN THE YEARS

This fantastic 10-piece Steely Dan tribute will have you 'Reelin' in the Years' during a dynamic show featuring classic tracks such as 'Rikki Don't Lose That Number', 'Do it Again', 'Haitian Divorce', 'FM' and many more hits from the American jazz rock legends. www.steemydan.co.uk

ALL SEATS: £14.00



FRI OCT 8TH: 7.30PM: & SAT OCT 9TH (2.30PM & 7.30PM)

THE STRAND SINGERS COMPANY LET'S ALL GO TO THE MUSIC HALL

The talented Strand Singers return with another helping of laughter and much-loved songs following the sell-out success of their music hall show at the Maddermarket last December. Favourites old and new will ensure a rousing show. Dress up and join in if you want to – and bring your friends! All profits go to local charities.

ALL SEATS: £10.00



WED NOV 3RD – SAT NOV 6TH: 7.30PM, & SAT MATINEE: 2.30PM

NORFOLK YOUTH MUSIC THEATRE THE VACKEES

This funny and moving story is set at the beginning of the Second World War, and tells of the 'invasion' of a Somerset village by 'vackees' - child evacuees from London. The musical tells of their scrapes and adventures with the hostile villagers, and centres on a young boy, Kip, and his first experiences of love and war. With memorable tunes, humour, pathos and a special appearance by 'Ginger Rogers', this show has the lot! Book and lyrics by Hiawyn Oram, music by Carl Davis. www.norfolkymt.net

SEATS: £10.00 (CONCESSIONS £8.00)



WED DEC 1ST - THURS DEC 2ND: 7.30PM

CHRISTMAS WITH ELVIS

The UK's leading Elvis production is back for a special Christmas show – and features special guest appearances from musical legends Buddy Holly, Roy Orbison and Marilyn Monroe! This outstanding tour production from the team behind the West End show 'Jailhouse Rock' features original star Mario Kombou, and Ivor Novello-award winning musical director David MacKay leading an incredible band. The show features more than 40 of your favourite hits. www.parkpromotions.com www.thejoyof6.com

ALL SEATS: £17.50



FRI DEC 3RD – SAT DEC 4TH: 7.30PM

THE LOCRIAN ENSEMBLE THE SPIRIT OF CHRISTMAS BY CANDLELIGHT

The Locrian Ensemble's annual Christmas concert is one of the hottest tickets in the Maddermarket calendar. This special event includes carols for ensemble and audience, Christmas favourites, harp solos and guest singer - and this year the group is joined by the award-winning Norwich High School for Girls Chamber Choir, directed by Hilary Weiland. This evocative event is the ideal way to debunk the commercialisation of Christmas, and to enter the true spirit of the festive season. www.locrianensemble.co.uk

ALL SEATS: £15.00

SHOWS IN THE REHEARSAL ROOM AND BAR



MON SEPT 20TH-FRI SEPT 24TH: 1.10PM

MEURTRE, MYSTÈRE ET MUTILATION A TRAGIC COMEDY BY ALAN HUCKLE

A two-man murder mystery with a difference. Peter Sowerbutts and David Blood, directed by Mark Finbow, take their audience on a Gaelic journey to Victorian Northern England, where cloth caps, clogs and warm ale abound. It's t'bloody murder up there...or is it? Presented by Eyeswrite in association with Headless Teddy Productions. This show takes place in the rehearsal room. www.headlessteddy.co.uk

SEATS £6.00 (CONCESSIONS £5.00)



THURS OCT 14TH: 1.10PM, & FRI OCT 15TH: 1.10PM & 7.30PM

INTERLUDE – A 20TH CENTURY HIT LIST

Interlude returns as Maddermarket stalwarts young and old present a celebratory programme of songs from 1900 to 1999. The show promises a nostalgic 60 minutes of music starting with Scott Joplin and running through to 'Destiny's Child'. An exciting range covers music hall, ragtime, jazz, swing, rock, punk, boy/girl bands, and much more – including a birthday tribute to Elvis. This show takes place in the bar.

ALL SEATS: £5.00



MON OCT 25TH – FRI OCT 29TH: 1.10PM

A LADY OF LETTERS – BY ALAN BENNETT

Judi Daykin plays the single, suburban and lonely Miss Ruddock as the Broad Horizons Theatre Group presents another of the famous 'Talking Heads'. Miss Ruddock writes letters. Not nice letters or friendly letters, but letters that cause trouble and get her into trouble in turn. So when she decides that the child across the road is being abused, the consequences are not what she expects them to be. Alan Bennett's script is, as ever, full of humour, pathos and wit. Book quickly – these shows often sell out. www.broadhorizonstheatre.com

SEATS £6.00 (CONCESSIONS £5.00)

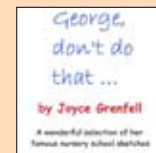


SAT NOV 13: DOORS OPEN 8PM FOR 8.30PM START

A NIGHT OF STAND-UP COMEDY

Saltbox, Norwich's leading alternative comedy club since 2007, returns for a special night featuring the best in stand-up from the UK and local comedy scene. Richard Herring, Catie Wilkins, David Trent and Dan McKee star in this show, which takes place in the rehearsal room. Saltbox has been described on the Comedy Channel as one of the best clubs outside London.

SEATS: £8.00 IN ADVANCE, £10.00 ON DOOR



MON NOV 22ND – FRI NOV 26TH: 1.10PM

GEORGE, DON'T DO THAT – BY JOYCE GRENFELL

Jo Sessions, of Cut Out & Keep Theatre, brings to life Joyce Grenfell's brilliantly observed, funny and bitter-sweet nursery school sketches, which are certain to entertain and put a smile on your face. An ideal way to mark the centenary of the much-loved Joyce Grenfell's birth in 1910. Don't miss this one if you like children! www.cutoutandkeeptheatre.com

SEATS £6.00 (CONCESSIONS £5.00)

THEATRE NEWS

A MADDERMARKEt SEASON TICKET – THE IDEAL GIFT!

If you struggle to find the perfect Christmas present why not make life easier with the ideal gift – a season ticket to see all 12 of the Maddermarket's annual in-house productions? Or simply treat yourself to a year's feast of varied theatre-going!

A fixed season ticket enables holders to reserve their favourite seat for the same day of each show, while a flexi season ticket means they can choose their preferred performance.

Maddermarket season tickets cost £120, £100 or £80, representing a substantial saving on the £144, £120 or £96 it would cost to book each show individually. Effectively you can enjoy 12 great nights out for the price of 10! A full year's season ticket runs from January to December, but they can be bought at a pro-rata price at any time. Pick up a form, or download one from our Theatre website.

CENTENARY CELEBRATIONS!

The Maddermarket Theatre Company will celebrate major milestones in its history during 2011. The year marks the 100th anniversary of the formation of the Guild of the Norwich Players in 1911 – and the 90th anniversary of the opening of the Maddermarket Theatre in 1921!

We have an impressive archive and will be putting together a number of displays and exhibitions. However, we are always looking to extend our collection, and we have plans for a commemorative booklet – so please share with us your Maddermarket memories and memorabilia.

In particular, we are looking for old photographs from 1911-1950. If you can help please contact us - all pictures will be carefully copied and returned safely.

DONATIONS, LEGACIES, SPONSORSHIPS

The Maddermarket is almost entirely self-funding. We are delighted to receive a small grant from Norfolk County Council for our education department but it amounts to less than 1 per cent of our annual income. For the rest, we rely on box office, sponsorship, and gifts, donations and legacies. In fact, without a number of generous legacies we might not be here now! Please help us secure our future for our next 100 years!

You can make a donation via CharityGiving by visiting charitygiving.co.uk or if you would like to sponsor a production, or advertise in this brochure, please get in touch.

HOW YOU CAN HELP

You can help the Maddermarket in many ways. These include buying a season ticket, joining the Friends, becoming a Corporate Friend, sponsoring a show or a seat, advertising in our brochure or programmes, joining the 300 Club, distributing and displaying posters, joining an acting class, joining our audience feedback panel, or remembering us in your will. Why not join us as a company member, and get involved in acting, or front-of-house, backstage, in the wardrobe, or behind the bar and coffee bar? But most of all we appreciate your continuing support as a member of our audience. Support our shows – and tell your friends.

YOUTH THEATRE TO TACKLE 'RHINOCEROS'

The Maddermarket Youth Theatre production group will stage an adaptation of 'Rhinceros', by Eugene Ionesco, on Tuesday, November 30 at 7.30pm (£5.00, concessions £3.00). The play – which will be directed by Natasha Purwin – was written in 1959, and is categorised as an example of the 'Theatre of the Absurd'.

The inhabitants of a small, provincial town turn into rhinoceroses during the course of the play. Ultimately, the only human who does not succumb to this mass metamorphosis is Berenger, a flustered 'everyman' figure who is often criticised for his tardiness, his drinking and his general scruffiness. Finding himself alone, he decides he must take on the rhinos.

TRAINING AND EDUCATION

Drama students of all ages and abilities can derive enormous enjoyment and satisfaction through enhancing their theatrical skills at the Maddermarket.

Over the years the professional tuition of the Maddermarket's thriving Youth Theatre has helped develop the talent of many young actors and actresses who have gone on to take parts in the Theatre's mainstream productions. Some have attended drama school, and appeared on the national stage, on television, and in film.

Meanwhile our drama classes are open to people of all ages, backgrounds and experience, and again many students graduate to major roles on the Maddermarket stage and beyond. For further information contact Maddermarket education supervisor Jenny Dewsbury on 01603 628600, or email mmtedu@btconnect.com

MADDERMARKEt YOUTH THEATRE – WEEKEND CLASSES

These are ideal for young people aged 6-17 who are interested in the performing arts. Our syllabus provides a solid foundation in acting while developing communication and social skills, confidence and self-esteem. We begin with simple storytelling.

MADDERMARKEt YOUTH THEATRE SINGING GROUP

These classes take place on Sundays, and represent an opportunity for youngsters aged 12 and upwards to learn to sing in a relaxed and fun environment. Our current members are preparing for the local drama and music festival.

LAMDA EXAMINATION CLASSES

These are open to anyone with an interest in performance and self-development. Classes take the form of 10-week terms, and benefits include enhanced theatrical skills, increased confidence and self-esteem, and improved communication and social skills. The higher grades also count towards UCAS points. There are classes suitable for everyone from six years old through to adult. The cost is £65-£95.

ADULT DRAMA CLASSES – WEEKDAY EVENINGS

These are open to anyone aged over 17 with an interest in performance and self-development. Classes take the form of eight-week terms, and benefits include enhanced theatrical skills, increased confidence and self-esteem, and improved communication and social skills.

IMPROVISATION

Vivian Munn will place the emphasis on experience, rather than a cerebral approach to the subject, through a series of structured exercises and explorations. He will give participants the opportunity to develop and perform with confidence in a safe, free and non-judgemental environment.

Vivian is an academy associate teacher at the Royal Academy of Dramatic Art (RADA), where he works on the BA in acting, foundation and short course programmes. He is a RADA graduate and has worked extensively as an actor and director. This course will run over eight weeks on Mondays from 7.15-9.45pm between September 20 – November 15. It costs £45.

TOP TUITION

The Maddermarket's education department also offers individual tuition, plus a range of workshops and training opportunities for schools, businesses, and other sections of the community. Please contact the education department for further details.

YOU GET MORE AT THE MADDERMARKE THEATRE



RENT-A-THEATRE

The Theatre complex (in full or in part) is available for hire at exceedingly competitive rates. This includes the auditorium (310 seats) for productions, conferences, product launches, corporate hospitality and educational gatherings. Our rehearsal studio and bar also provide attractive locations for corporate hospitality and social events.

COMPANY MEMBERSHIP

Ever wanted to act, paint sets, make costumes, help back stage or front of house? Then join the Maddermarket Theatre Company – no subscription charged – just your time, passion and energy required. Pick up a membership form from the Theatre today and become a part of one of East Anglia's most prestigious venues. Alternatively, you can download a form from our website.

FRIENDS OF THE MADDERMARKE

The Friends offer regular support to the Theatre and raise essential additional funds. They contributed more than £40,000 towards the air treatment system, funded the 'light curtain', and are now delighted to be funding the purchase of a computerised booking system for the Theatre. The Friends also administer the 300 Club on behalf of the Theatre – this offers monthly cash prizes, and is open to all.

An annual subscription for membership of the Friends costs £10 (single) or £15 (double). Life membership costs £150 (single) or £225 (double), Corporate Friends £250. Membership of the 300 Club costs £12 a year (or pro rata payment). Pick up Friends and 300 Club leaflets from the Theatre – or phone or email, and ask for them to be posted to you. Alternatively, download forms from our website.

MADDERMARKE TOUR

Pre-booked daytime talks and tours of the Theatre are available for groups of 10 to 30 people. Discover the intriguing history of the Theatre. Explore backstage and the Theatre Wardrobe. You might even meet the resident ghost!

Tour lasts approximately 1 1/2 hours. £3.00 per person. Schools/colleges £2.00 per person.

BOOKINGS

In person: Payment by cash, cheque with card, Maestro, Delta, Visa or MasterCard.

Telephone: Call 01603 620917 with debit/credit card details.

Post: Include date, time and title of performance, price and number of seats. Enclose a cheque payable to 'Maddermarket Theatre' (address on back cover).

Internet: We hope to be able to offer this very soon - please check our website for latest information.

Email: To mmtheatre@btconnect.com, include details as above and your telephone number. Do not email card details.

All bookings using a card (in person, by telephone and by post) carry a £1 administration fee per transaction. Tickets can be posted for an extra 50p.

We accept most major cards, but we cannot take Amex, Diners, MasterCard Premium (World Card and World Signal) or Visa Chargecard cards. We are happy to accept payments by cheque.

Please note that children under three cannot be admitted to any performance.

Tickets for Maddermarket Theatre Company productions cost £12 (best seats), £10 (on the edge), and £8 (economy). All seats cost £10 on first nights except economy seats, which cost £8. All seats usually cost £8 at matinees but please note that special prices apply for performances of the Christmas show. The following concessions also apply except on Fridays and on Saturday evenings:

- Senior citizens, students & the unwaged (proof may be required) can buy £12 seats for £10.
- Group discounts - for every 10 tickets bought, get an 11th free.
- Student standby £5 on the night from 7pm (no advance booking, offer subject to availability).
- Only one concession per booking.

Ticket prices for visiting productions are shown with the details of each show. No further concessions are available.

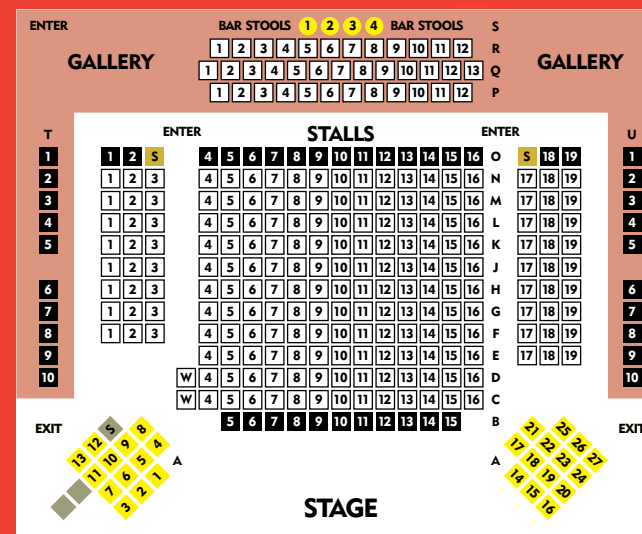
BOX OFFICE

OPENING TIMES

Normal hours:
Mon to Fri 10am-5pm and Sat 10am-1pm

Maddermarket Theatre Company shows:
Mon to Sat 10am-7.30pm

Visiting shows:
Mon to Sat 10am-7.30pm and Sun 5pm-7.30pm



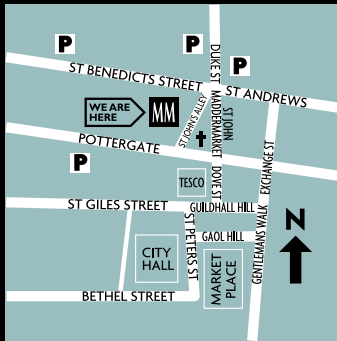
KEY:

- BEST SEATS
- ON THE EDGE
- ECONOMY
- STEWARDS
- WHEELCHAIR AREAS

Auditorium spaces are available for wheelchair users at every performance.

Unisex toilet for the disabled.

Loop system in the stalls. Guide dogs admitted.



Contact us:
Maddermarket Theatre
 St John's Alley, Norwich NR2 1DR
 Administration: 01603 626560
 Fax: 01603 661357
 Email: mmtheatre@btconnect.com
 Website: www.maddermarket.co.uk
 Registered Charity No.234993

BOX OFFICE 01603 620917 SEPTEMBER TO DECEMBER 2010 AT A GLANCE

THURS AUG 19 – SAT AUG 28
ARSENIC AND OLD LACE MM

THURS SEPT 2
RAYMOND FROGGATT

FRI SEPT 3
AN AUDIENCE WITH ANN WIDDECOMBE

SAT SEPT 4
THE FLOYD EFFECT

THURS SEPT 16 – SAT SEPT 25
SNAKE IN THE GRASS MM

MON SEPT 20 – FRI SEPT 24
**LUNCHTIME THEATRE
 MEURTRE, MYSTÈRE ET MUTILATION**

TUES SEPT 28
RICHARD DIGANCE

WED SEPT 29
THE BLUES BAND

THURS SEPT 30
THE CHURCHFITTERS

FRI OCT 1
**THE LOCRIAN ENSEMBLE
 TCHAIKOWSKY BY CANDLELIGHT**

SAT OCT 2
THE UPPER OCTAVE

WED OCT 6
STEEMY DAN

FRI OCT 8 – SAT OCT 9
THE STRAND SINGERS COMPANY

THURS OCT 14 – FRI OCT 15
**LUNCHTIME/EVENING MUSIC
 INTERLUDE – A 20TH CENTURY HIT LIST**

THURS OCT 21 – SAT OCT 30
TRAVELS WITH MY AUNT MM

MON OCT 25 – FRI OCT 29
LUNCHTIME THEATRE – A LADY OF LETTERS

WED NOV 3 – SAT NOV 6
**NORFOLK YOUTH MUSIC THEATRE
 THE VACKEES**

SAT NOV 13
A NIGHT OF STAND-UP COMEDY

THURS NOV 18 – SAT NOV 27
MEASURE FOR MEASURE MM

MON NOV 22 – FRI NOV 26
**LUNCHTIME THEATRE
 GEORGE, DON'T DO THAT**

TUES NOV 30
**MADDERMARKET YOUTH THEATRE
 RHINOCEROS**

WED DEC 1 – THURS DEC 2
CHRISTMAS WITH ELVIS

FRI DEC 3 – SAT DEC 4
**THE LOCRIAN ENSEMBLE
 THE SPIRIT OF CHRISTMAS BY CANDLELIGHT**

SAT DEC 18 – MON JAN 3
THE BFG MM

THURS DEC 23
DRESS TO IMPRESS

Shows may be subject to amendment.



Every effort is made to ensure accuracy of detail in this brochure but errors and omissions can occur.

Kindly supported by:
 Norfolk County Council

JARROLD
 The John Jarrold Trust