



Excellence East
C/O Fulbridge School
Keeton Road
Peterborough
PE1 3JQ

January 2011

Excellence East Events for Able, Gifted and Talented Children in Years 5- 8

Excellence East is pleased to invite your child to attend an exciting programme of activities being held locally during the February half term holiday.

These events are managed by Excellence East and are provided by a number of hand picked specialist companies. Each event is designed to give your child the kind of fun educational experiences they do not have the opportunity to participate in during school time. Each activity is a full day event (10am – 3.30pm), held during the February half term holiday located around the East of England.

Full details of all the courses can be found in the accompanying leaflet. The courses available in the Spring term 2011 are:

Tues 22 nd February 2011	Dr Evil's Revenge	University College Suffolk
Tuesday 22 nd February 2011	Chinese Mandarin	University of East Anglia
Wednesday 23 rd February 2011	The Riddle of the Mummy's Curse	Ken Stimpson Community School, Peterborough
Wednesday 23 rd February 2011	The Secret Formula	King Edward Grammar School, Chelmsford
Thursday 24 th February 2011	Sweet Science	Stratton Upper School, Biggleswade

Booking a place is straight forward. Just select a course from the leaflet and then contact Boost Education on 01603 755404. You will be given confirmation of a provisional place. You then have to send a cheque for £30, to cover the cost of the course and resources. If you wish to apply for financial assistance, please ring Jill Sherwood on 01733 566990 to obtain the criteria for assisted places.

Please make cheques payable to Fulbridge School and send it to the address above. Please ensure you write your child's name, address, course title, venue and date on the reverse of the cheque. You will then receive confirmation of your booking and further course information. Places will only be confirmed once payment has been received. Refunds can only be given less than 7 days prior to the event.

We do hope you will enjoy the courses!

A handwritten signature in black ink that reads "John Carter".

Excellence East

Excellence East Outreach Programme

The Riddle of the Mummy's Curse

Unwrap part of a mummy, sort through **ancient stomach contents**. Students become **Egyptologists for the day**. Each group receives a letter and a sealed box containing ancient Egyptian remains, canopic jars, sacred relics, bits of a mummy and hieroglyphics on papyrus. Using these delicate remains they have to **discover who killed the young Pharaoh**, Sihathor (a real Pharaoh). Make your own scarab, uncode the hieroglyphics, learn about the curse that continues to this day and above all solve this ancient mystery.



The Secret Formula

Prof. Boffin has discovered a cure for AIDS but is suspiciously found dead in the Managing Director's office. Visit a **crime scene**, find out how **forensic science** works and, through experiments and role-play, **reveal the culprit** from the line up of suspects. Be a real life detective! Use forensic evidence evaluation, laboratory analysis, hair and fibre analysis and chemical reactions to discover who murdered the professor and why.



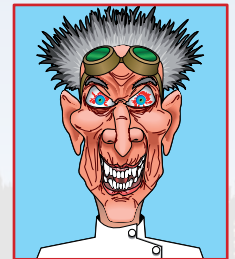
SWEET SCIENCE

Why does chocolate melt in your mouth? Why does corn pop and Space Dust crackle? What makes some sweets taste sweet and others sharp? **Why are marshmallows so fluffy?** Test your tongue - molecules and flavours. Do experiments to find the answers to these and many more questions, and maybe you can **eat the results!** Discover the feel good factor in chocolate. A day packed with **activities to make your mouth water**. Plus help save a struggling confectionery company by designing a fantastic new sweet that will tickle the taste buds!



Dr Evil's Revenge

Dr Evil threatens to **blow up the Houses of Parliament** and our young (008) **secret agents** must stop him before the end of the school day. It's a race by groups of students to find Dr Evil. Students deduce Dr Evil's movements by using **mobile phone triangulation**, fibre analysis, **code breaking**, chemical reactions and **forensic tests** to analyse evidence and draw conclusions. Each time they get a correct answer, they are one step nearer. But if they fail, they have to accept the consequences... A great fun way of using forensics to discover what is really involved in apprehending a criminal mastermind.



CHINESE MANDARIN

An introduction to Chinese Mandarin. If you have ever wanted to know how to **greet someone in Mandarin** and learn the basics of the language then this is the course for you. Learn about China's geography, history, culture, regions and cities. Come away from the day being able to impress your friends with whole sentences in Mandarin. Plus discover the intricacies of Chinese letters and **calligraphy**. Try your hand at a **traditional Chinese instrument** and play along to create some **authentic Chinese music**. This course is packed full of art, language, geography, music and above all fun! A perfect opportunity to sample the wonders of Chinese Mandarin.



Booking a Course



- Choose the course, venue & date you prefer (see attached letter for dates and venues).
- Call Boost Education on 01603 755404 to make a provisional booking.
- Make cheques payable to: 'Fulbridge School' write your child's name, course, venue and date on the reverse.
- Send in your cheque to: Excellence East, C/O Fulbridge School, Keeton Road, Peterborough, PE1 3JQ.
- Please note that your booking will be secured only on receipt of your cheque.
- About 7 days before the event takes place the course information, confirmation and map will be sent to you.