

Teacher's Private View: Behind the Mask

Chinwe Chukwuogo-Roy MBE

Alongside an exhibition by Gareth Bayliss:
Return to the Ipswich Art School

Thursday 13th October 2011, 5pm – 7.30pm

Drinks, nibbles, screen-printing workshops, information
about school activities, and tours throughout the evening



Artist-led sessions

+ Making Masks

Pupils will explore the **Behind the Mask** exhibition with our friendly artist, discussing ideas around identity and how we represent ourselves. They will then design and create their own mask using a range of materials and techniques.

10am-2pm artist-led session,
£4.20 per pupil.

Wed 22nd and Thurs 23rd Feb

Wed 28th and Thurs 29th Feb

Suitable for KS2 and above



+ Screen Printing T-Shirt Design/ Slogans with Gareth Bayliss

Screen printing T-shirts, pupils will learn a start-to-finish printing technique resulting in a unique wearable artwork.

2hr artist led session, £4.20 per pupil.

Dates available on request throughout the exhibition, subject to availability suitable for all age groups.

Self-led visits

+ Come and see the exhibition with your class

+ Gareth Bayliss will be working as an artist in residence at times

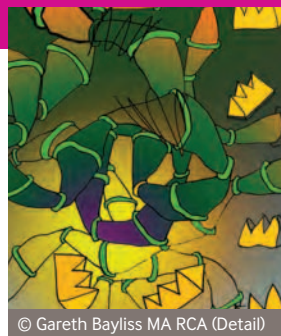
Please call if you'd like to check his availability during your visit

+ Self-led project: students produce a Zine. A magazine all about them!

More information and examples available at the teacher's private view.



© Chinwe Chukwuogo-Roy MBE



© Gareth Bayliss MA RCA (Detail)

Exhibition dates and times

Sat 8th October 2011 – Sun 4th March 2012
Open Tues – Sun 10am-5pm

Includes work by Chinwe Chukwuogo-Roy MBE, Gareth Bayliss, Suffolk New College, University Campus Suffolk and a community space

Please RSVP to Rachel Macfarlane on 01473 433570
or rachel.macfarlane@colchester.gov.uk