



'It's about time'

In this term's edition of the newsletter we have reports on projects with schools in Wicklewood and Cringleford, four new Great Yarmouth resource packs, two new science resource packs, and the forthcoming Paston exhibition.

Resource Packs for Great Yarmouth

We have had a busy start to the year, creating a variety of resources for schools. North Denes Junior School requested four packs looking at the history of different areas and periods in Great Yarmouth. In January, we produced one pack on the School's local area and another on the history of the rows. The rows were narrow lanes, which ran east to west near the Market Place in Great Yarmouth. Housing in the rows was typically cramped: in 1849, over 26,000 people lived in the rows. However, by 1936 a survey revealed that many houses were unfit for habitation and clearance work began. Documents in the pack include a map of the rows showing the numbering system, photographs and drawings of individual rows, a sale particular for a blacksmith's shop on Rows 135-6, lists of inhabitants and an extract from a Society for the Protection of Ancient Buildings report about the rows, 1936.

In addition, we created two packs about Great Yarmouth during the Second World War, one focusing on bombing and the other on evacuees in the town. Great Yarmouth was unusual in that it welcomed evacuees from London on their journey to the Norfolk countryside and also evacuated local children to Nottinghamshire. These experiences are documented through a series of letters, photographs, and school log-book entries included in the pack. There is also a list by the Great Yarmouth Education Committee, 20 September 1940, detailing expenses for evacuating children from Great Yarmouth.



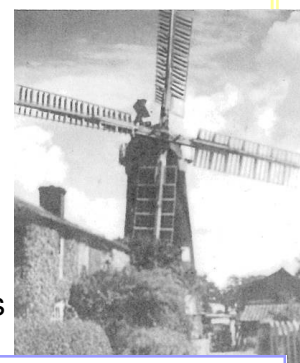
Both the Second World War packs and the Rows pack are now available for other schools. They contain 14 laminated images and cost £9.95 including postage and packaging. To purchase a pack please contact the Education and Outreach section, using the details on the back of this newsletter.

NRO, Y/ED 854

Class photograph of pupils from Greenacre School during their evacuation to East Markham, Nottinghamshire.

The local history of Wicklewood

During the spring term we were approached by the year 5 teacher at Wicklewood Primary School about running a workshop looking at the history of the village and the local windmill. We were able to run a local history workshop in which children used the census to look at a rich family and a poor family from the village, and then had a go at our shopping activity in which they used a trade directory and Ordnance Survey map to find out which trades were active in the village at the turn of the twentieth century. We also looked through the archive of the Norfolk Windmills Trust in order to provide information to help the school in their research into the mill. This included lists of previous owners from 1845 onwards, and a survey carried out in 1977 on the cost of fixing the mill. Children from the school visited the mill in order to see it with the new sails, which were fitted in 2012.



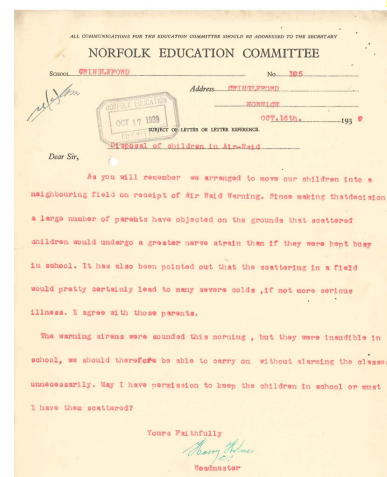
NRO, C/WT 1/6/5 PH 32

Norfolk Windmills Trust, Wicklewood Mill 1933-4.

The History of Cringleford Primary School

Cringleford Primary school will be moving into new premises in June this year. The current school is on the site of the 1858 building. As part of celebrations of the history of the school, the school are working with villagers to collect memories of the school and create a book and exhibition.

Looking through the log-books, there are many interesting entries. One for 7 November 1941 stated that the 'Gas van visited Cringleford today and was installed on the green outside the school this afternoon. All children passed through it and now have added confidence in their respirators, especially as some scholars were allowed to raise their face pieces for a moment and satisfy everyone that there really was gas in the van'. On 21 June 1940, the head teacher wrote, 'On the mornings following night air raid alarms several children have arrived too late for marks - parents wisely allowed children to have slept out to make up for lost hours of rest'.



NRO, C/ED 68/179

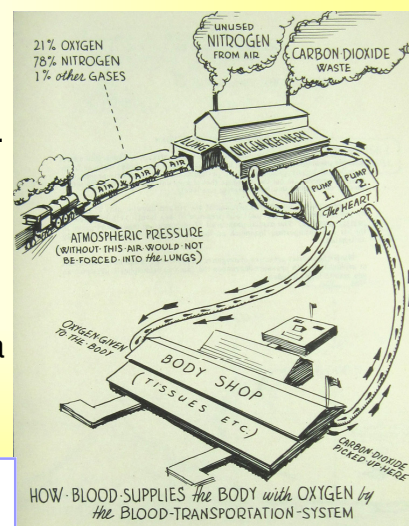
Letter regarding air-raid precautions at Cringleford School, 1939.

Forthcoming Science Packs

We are currently working on our first science resources for schools. The packs will include copies of documents, experiments which can be carried out in the classroom and background information.

Pack one looks at water lifts and water wheels, using advertising material for the Boulton and Paul Water Elevator and various Norfolk water mills. The pack relates to the science topics of forces and energy, but also allows for cross-curricular work including elements of design and technology. Topics include Water elevators, Making a water wheel, Using a water wheel, and Paths of energy.

Pack two will focus on what happens to your body in flight. It is based on a booklet that was issued to new United States Army Air Force pilots when entering training during the Second World War. The booklet included many cartoons and diagrams to explain what would happen during their missions and how to keep safe and healthy. Topics included in the pack are Making a model lung, Measuring respiration rates, Blood circulation and Ears and sound.



NRO, MC 371/576

United States Army Air Force training manual, 'Your Body in Flight' 1943.

Paston project

In October 2013 we will be launching an exciting exhibition looking at the Paston family. The exhibition, entitled, *The Pastons and the Pursuit of Power*, will take place in our Long Gallery from mid October 2013 to January 2014. The exhibition is being arranged jointly by the Norfolk Record Office and the Paston Heritage Society and we will be working with the society on a number of events for schools. Details are still being finalized, so look out for more information in the next edition of the newsletter.



If you need 'It's about time' in large print, audio, Braille, alternative format

or in a different language, please contact the County Archivist on 01603 222599 and we will do our best to help.

Norfolk Record Office
The Archive Centre, Martineau Lane,
Norwich, NR1 2DQ

Tel: (01603) 222599

Fax: (01603) 761885

E-mail: norfrec@norfolk.gov.uk

Website: <http://archives.norfolk.gov.uk>

