

# Events and Professional Development Opportunities for Teachers at Norwich Castle 2013-2014

Join our teachers' network – it's free and you will receive regular updates, exclusive private views and the opportunity to get involved in the development of sessions and resources. To join, email us at [claire.dollman@norfolk.gov.uk](mailto:claire.dollman@norfolk.gov.uk)

All events and professional development opportunities are free to teachers. Please book in advance, 01603493636 or email [claire.dollman@norfolk.gov.uk](mailto:claire.dollman@norfolk.gov.uk)

## CURIOSITY: Art and the Pleasures of Knowing

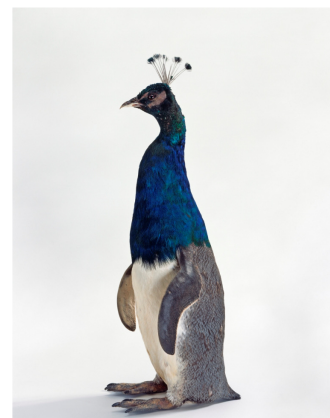
*Private view, tour and talk with Anna Green, Youth Engagement Officer*

Thursday October 3<sup>rd</sup> 4.30 – 6pm

*Curiosity* is full of the wondrous and bizarre, the exhibition mingles old and new objects which cross the borders between art and science – Durer's famous *Rhinoceros* print, historic anatomical models, and even a Leonardo or two... The originating idea for the exhibition is the centuries-old 'cabinet of curiosities' – weird and wonderful objects collected by the rich and housed in fabulous surroundings to amaze, delight, and inform those lucky enough to view them, as well as the very concept of curiosity itself.

Curious? Come to the private view.

*A Hayward Touring exhibition in association with 'Cabinet' magazine, organised in collaboration with Turner Contemporary, Margate. Hayward Touring exhibition*



Thomas Grünfeld, *misfit* (penguin/peacock) 2005, © by DACS, London 2013. Photo: Lothar Schnepf

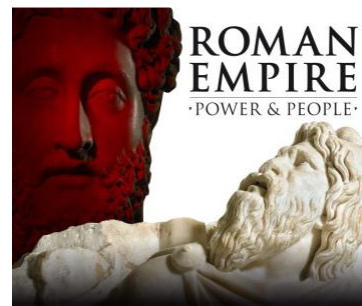
## Roman Empire: Power & People

*Private view, tour and talk with John Davies, Chief Curator*

Wednesday 5th Feb 4.30 – 6pm

This is the first time some of the finest pieces from the British Museum's Roman collections have been seen outside London. What do religious, military and domestic objects tell us about the power, wealth and organisation of the Roman Empire? What was it like to be Romanised – was it the same in Norfolk as in other parts of the Roman Empire?

*A British Museum Tour*



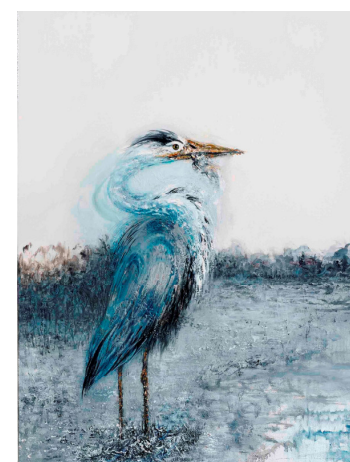
Images © The Trustees of the British Museum

## The Wonder of Birds

*Private view, tour and talk by the curator*

Tuesday 3<sup>rd</sup> June 2014, 4.30 – 6pm

*The Wonder of Birds* explores the cultural impact of birds upon humankind and combines local, national and international issues that reflect conservation, migration, adaptation and survival. The exhibition includes works by major artists and illustrators, both historical and contemporary and objects from natural history, archaeology, fashion and social history. It highlights different aspects of birds, their meanings and our relationships with them.



Maggi Hambling, *Heron in the Shallows of the Thames*, oil on canvas, 2013.

## Art Masterclass for Teachers

Saturday 7<sup>th</sup> June 2014, 10.30-4pm

This is for you! Enjoy a day working with a professional artist to develop your artistic skills and techniques. The focus will be the Wonder of Birds exhibition and there will be ideas and inspiration to take back to the classroom



## Take One

*Dates by request*

Learn how to use pictures effectively in the classroom.....Take One is an approach for primary schools inspired by the National Gallery's highly successful Take One Picture programme. One painting is used as inspiration for meaningful and creative cross-curricular work. We offer an introductory CPD session to explain the approach and give some practical examples to use in the classroom. It's a fantastic focus for a whole school projects such as Arts Week.



John Crome, *Norwich River: Afternoon*, oil on canvas, 1819.

*'The painting provided a fantastic context in which to encourage thinking, questioning and speaking & listening skills. It really enhanced their artistic ability',* participating teacher

## Bespoke INSET sessions

We can provide courses tailored to meet your needs and enhance your understanding of the past. Why not consider holding one of your training days at one of our museums, away from school in a beautiful and spectacular setting?

## Making the Most of your Museum

*INSET course for Early Years practitioners*

Wednesday 12<sup>th</sup> March 2014, 9.30-3pm

This day offers Early Years practitioners an opportunity to look at how the collections of Norwich Castle can be used to provide active learning experiences that support the Early Years Foundation Stage.

*Cost £20 maintained, independent and voluntary settings, £10 private, voluntary and childminding settings.*

*Part of Norfolk County Council's Training Programme*



[www.museums.gov.uk](http://www.museums.gov.uk)



Supported using public funding by  
**ARTS COUNCIL  
ENGLAND**



**Norwich Castle**  
Museum & Art Gallery