



Pre-Season Advance Briefing

Winter 2014

'Curtain Up!' showcases explosive new theatre for children, young people and young adults.

From gritty new writing to laugh-out-loud family shows 'Curtain Up!' brings the best of UK touring theatre to your doorstep.

'Curtain Up!' is subsidised by Arts Council England.

- **BOOKING NOW OPEN!**
- **FIRST PERFORMANCE FRIDAY 24TH JANUARY 2014**
- **GROUP BOOKINGS BOX OFFICE: 01603 598646**
- **TEACHER/GROUP LEADER GOES FREE WITH GROUPS OF 10+**
- **ONLINE TRAILERS FOR MANY SHOWS**
- **DOWNLOADABLE RISK ASSESSMENTS AND VISIT DOCUMENTS**

Key to Content Ratings...

The following statements have been used to prepare contents guidance for each show.

Category	Suitable for Young Children and Family	Suitable for Young People +	Suitable for Young Adult +
	<i>Minimal</i>	<i>Moderate</i>	<i>Strong</i>
Discrimination	Little or no discriminatory language or behaviour unless clearly disapproved of.	Unlikely to include discriminatory language/themes unless infrequent and clearly condemned	May include discriminatory language/themes but the work as a whole must not endorse discriminatory language or behaviour
Language	Very mild language used infrequently	May contain use of moderate language but use of strong language will be infrequent	May include frequent use of strong language. Very strong language may be used if justified by the context.
Drugs/Alcohol	Little or no reference to illegal drugs/Alcohol use (except where used educationally & suitable for younger children)	References will be infrequent, not glamorised or detailed	May include Alcohol/drug taking/misuse but overall must not promote or encourage such behaviour
Horror	Scary sequences are short, mild and have reassuring outcomes	May contain moderate threat but these will not be frequent or sustained.	May include strong threat or violence but not sexualised or sadistic.
Nudity	May contain part nudity (No full frontal or sexually orientated nudity)	May contain part nudity. Sexual context will be brief and discrete	May contain part nudity. Sexual contexts will be without strong detail.
Sex	May contain mild sexual behaviour (e.g. kissing) or innocuous references (e.g. making love)	May be briefly and discretely portrayed. Sex references should be suitable for young teenagers.	Sexual activity may be portrayed without strong visual detail. May include verbal (and maybe strong) references to sexual behaviours.
Themes	If evident, problematic/mature themes are presented in a way which is suitable for small children	May contain mature themes but will be dealt with in a way that is suitable to young teenagers.	May contain any theme, presented in a way suitable to older teenagers and young adults.
Violence	May contain mild violence , threat or menace	May include moderate violence but not in significant (or gory) detail.	May be strong but not visually detailed or overly dwell on the infliction of pain. May contain detailed verbal references to pain, violence (including sexual violence) but will be discrete and have strong context and justification.

**BOOKING NOW OPEN. FOR GROUP BOOKINGS CALL BOX OFFICE: 01603 598646
FOR WORKSHOPS CALL TONI: 01603 283382 / EMAIL: EDUCATION@THEGARAGE.ORG.UK**

Planning your visit...

Purchasing Performance Tickets: Our theatre seats 113 people.

Box Office: All tickets, including group bookings can be purchased by calling **01603 598646** during usual box office opening hours.

Purchase Online: Individual tickets can be also purchased via www.thegarage.org.uk. Please note that group booking discounts are not available when booking online.

Education Opportunities: To discuss education opportunities or your visit please email education@thegarage.org.uk or call Toni on 01603 283366. Information is uploaded to our website as the season progresses so check online for up to date information of opportunities as they are added.

Documents You May Need

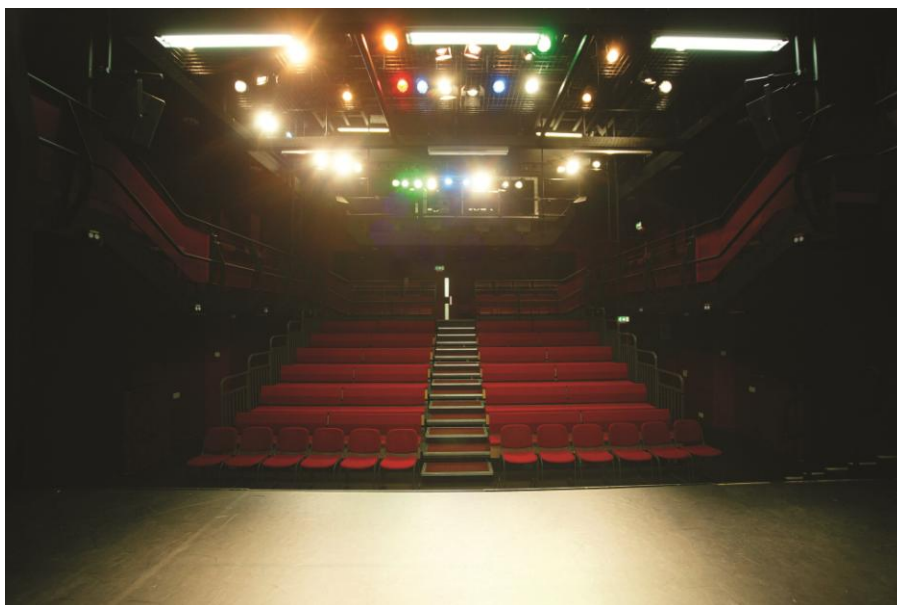
We have made all the documents you need to plan your visit downloadable from our website. On our schools page you will find:

- The Garage Risk Assessment
- The Garage Health and Safety Policy
- The Garage Public Liability Insurance
- The Garage Child Protection and Safeguarding Policy

Click here to navigate to our schools page: <http://www.thegarage.org.uk/schools-pgid86.html>

Refreshments: The Garage has a café area where you can purchase refreshments. You may also eat packed lunches in this space. The café can sometimes be very busy so let us know in advance if you are bringing a big group and would like to eat there.

Accessibility: The Garage venue is fully accessible via a flat level entrance and lift to all floors. Each floor has wheelchair accessible WC's. The auditorium can accommodate a small number of wheelchairs but it helps us immensely if you tell us in advance if you or any members of your party will be using a wheelchair.



**BOOKING NOW OPEN. FOR GROUP BOOKINGS CALL BOX OFFICE: 01603 598646
FOR WORKSHOPS CALL TONI: 01603 283382 / EMAIL: [EDUCATION@THEGARAGE.ORG.UK](mailto:education@thegarage.org.uk)**

Title: BLACKOUT written by Davey Anderson

Creative/Production Credits: Second Side Theatre Company

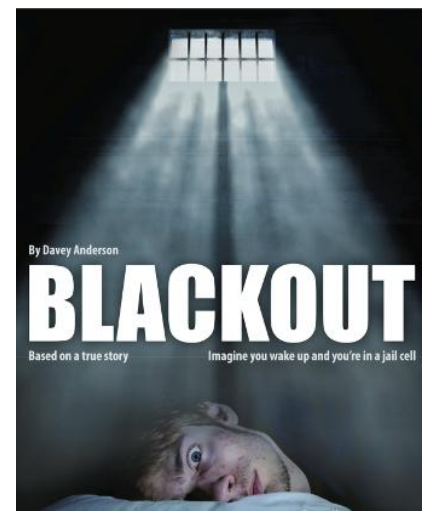
Performance Dates/Times: Friday 24th January 2014, 2pm / 8pm

Running Time: 1 hr + Q&A (No interval)

Category: [THEATRE](#) - Contemporary / New Writing

Key Stage: KS3/ 4 + (12 yrs+)

Content:



Content	Rating
Discrimination	Moderate
Language	Moderate
Drugs/Alcohol	Moderate
Horror	Moderate
Nudity	Minimal
Sex	Minimal
Themes	Moderate
Violence	Moderate

This production is great for:

- Engaging and original script
- Great local company
- In school workshop opportunities throughout Dec/Jan
- Storyline packs a punch - teenagers love it
- Discussing issues of bullying and consequences
- Citizenship / PSHE / Drama / English students

Description:

Blackout is the true story of a teenager charged with attempted murder who tries to piece together the events in his life that brought him into a secure care unit and threaten to keep him there.

In a highly imaginative fusion of scripted dialogue, visual imagery, physicality and recorded music, the troubled teenager James, wakes to find himself in a police cell, with no memory of how or why he is there.

Davey Anderson's play tells the true story of a young lad whose fight back against the bullies could easily have been the stuff of legend. Except that he chose to fight the bullies on their own terms, finding a role model in Hitler and swapping his own maligned look for a skinhead and braces.

Using a constantly creative, visceral and bold blend of live action, movement and music, the central character tells his story of violence, loss and heroism with engaging energy and an honest brutality.

Education Visits & Workshops:

- **2pm** Schools Matinee
- **FREE** Teacher/Group Leader with groups of 10+
- **FREE** Post show Q&A
- Email education@thegarage.org.uk to enquire about workshop & education opportunities
- More info & **ONLINE TRAILER:** <http://www.thegarage.org.uk/curtain-up-presents-blackout-eid330.html>

BOOKING NOW OPEN. FOR GROUP BOOKINGS CALL BOX OFFICE: 01603 598646

FOR WORKSHOPS CALL TONI: 01603 283382 / EMAIL: EDUCATION@THEGARAGE.ORG.UK

Title: THE NOVICE DETECTIVE

Creative/Production Credits: Contact Theatre presents Sophie Willen

Performance Dates/Times: Tuesday 28 January 2014, 19:00

Running Time: 1 hr + Q&A (No interval)

Category: **THEATRE** - Contemporary/Comic /Auto-Biographical

Key Stage: KS3/4 + (13yrs+)

Content Guide: Themes – abandonment/ living without parents.



Content	Rating
Discrimination	Minimal
Language	Minimal
Drugs/Alcohol	Minimal
Horror	Minimal
Nudity	Minimal
Sex	Minimal
Themes	Moderate
Violence	Minimal

About This Production:

- Accessible and fun introduction to theatre
- Made especially to engage teenagers
- Example of a solo show
- Post show Q&A with theatre maker
- Creative production
- Drama / English / PSHE students

Description:

Sophie Willan's debut solo-theatre show sets about solving the mystery of her missing father. Through a candid, poignant and comic performance, Sophie tells a heart-warming, heart-breaking tale that has to be seen to be believed; a story that reflects upon the universal yet isolating experience of abandonment.

The Novice Detective draws on themes many can relate to using auto-biographical theatre to engage, connect with and entertain the audience.

Education Visits & Workshops:

- **FREE** Teacher/Group Leader goes free with groups of 10+
- **FREE** Post show Q&A
- Email education@thegarage.org.uk to enquire about workshop & education opportunities
- More info and **ONLINE TRAILER:** <http://www.thegarage.org.uk/curtain-up-presents-the-novice-detective-eid294.html>

BOOKING NOW OPEN. FOR GROUP BOOKINGS CALL BOX OFFICE: 01603 598646
FOR WORKSHOPS CALL TONI: 01603 283382 / EMAIL: EDUCATION@THEGARAGE.ORG.UK

Title: LOVE AND SEX

Creative/Production Credits: State of Emergency Dance Company

Performance Dates/Times: Tuesday 4th February, 7:30pm

Running Time: 1hr + Q & A (No interval)

Category: **DANCE** - Contemporary

Key Stage: KS4 + (14yrs+)

Content Guide: Contains issues of sex and sexual consent.



About This Production:

- High quality contemporary dance company
- Topical themes relevant to young people 13-25
- Springboard for discussion
- Excellent contemporary dance workshop offer
- PSHE / Dance / Production students

Description:

Love and Sex is a new collaboration between State of Emergency and choreographer, Colin Poole. It goes where other shows have feared to tread. Facing up to issues of sex, love and consent with young people, this inspired show exposes myths, challenges perceptions, entertains and informs.

Accessible but hard hitting, this specially commissioned brand new dance theatre show explores the stresses, pressures and emotions surrounding sex while entertaining and inviting audiences to reflect and question their own behaviour and that of others.

Targeted at young people from ages 13 to 25, the show highlights the connection between sexual health and emotional well-being.

Education Visits & Workshops:

- **FREE** Teacher/Group Leader with groups of 10+
- **FREE** Post show Q&A
- **FREE** pre-show dance workshop with the company available to group purchasing 15+ tickets. (Limited availability, allocated first come, first serve, contact: education@thegarage.org.uk before purchasing tickets).
- More information: <http://www.thegarage.org.uk/curtain-up-presents-love-and-sex-eid328.html>

**BOOKING NOW OPEN. FOR GROUP BOOKINGS CALL BOX OFFICE: 01603 598646
FOR WORKSHOPS CALL TONI: 01603 283382 / EMAIL: EDUCATION@THEGARAGE.ORG.UK**

Title: 33

Creative/Production credits: The Wardrobe Ensemble

Performance Dates/Times: Thursday, 6 February 2014, 19:30pm

Running Time: 1 hr + post show Q&A (No interval)

Category: [THEATRE](#) - Devised/Physical

Key Stage: KS3/4 + (11yrs+)

Content Guide:



Content	Rating
Discrimination	Minimal
Language	Moderate
Drugs/Alcohol	Minimal
Horror	Moderate
Nudity	Minimal
Sex	Minimal
Themes	Minimal
Violence	Moderate

About This Production:

- Presented *RIOT* at The Garage in 2011
- Striking physical theatre techniques
- Good example of devised theatre
- Theatre inspired by true life world events
- Uses creative production techniques
- Suits Drama / Production / Humanities students

Description: The Wardrobe Ensemble use soulful stories, macho choreography and original music to present their take on the Chilean miner crisis of 2010. 33 tells the tale of the thirty three men stuck half a mile under the ground, the journalists in the desert above them and the world that watched them from afar.

The Wardrobe Ensemble present a tale of friendship, hope and Elvis Presley, 33 takes you beyond the newsrooms, past the cameras and leaves you 2000 feet under the ground. An outlandish, touching and funny modern-legend of men on the brink of death, fame and madness

Education Visits & Workshops:

- **FREE** Teacher/Group Leader with groups of 10+
- **FREE** Post-show Q&A.
- Email education@thegarage.org.uk to enquire about workshop & education opportunities
- More information: <http://www.thegarage.org.uk/curtain-up-presents-33-eid325.html>

**BOOKING NOW OPEN. FOR GROUP BOOKINGS CALL BOX OFFICE: 01603 598646
FOR WORKSHOPS CALL TONI: 01603 283382 / EMAIL: EDUCATION@THEGARAGE.ORG.UK**

Title: BLINK written by Phil Porter

Creative/Production Credits: nabakov
Theatre Company & Soho Theatre

Performance Dates/Times: Thurs 13 & Fri
14 February, 7:30pm

Running Time: 1hr 15m + Q&A
(No interval)

Category: [THEATRE](#) - New Writing

Key Stage: KS4 + (14yrs+)

Content Guide:



Content	Rating
Discrimination	Minimal
Language	Moderate
Drugs/Alcohol	Minimal
Horror	Minimal
Nudity	Minimal
Sex	Moderate
Themes	Moderate
Violence	Minimal

About This Production:

- Award winning new writing
- Traverse production, high production values
- Strong story telling & narrative
- Strong artistic collaboration – Soho theatre & nabakov
- Sold out Edinburgh 2012
- Select national tour
- Would suit A Level / Btec Drama / English students

Description:

This is the tale of Jonah and Sophie. It's a love story. A dysfunctional love story, but a love story all the same.

Against the lonely backdrop of London, the worlds of two shy individuals collide, and a charming, delicate and darkly funny story unfolds before your eyes. A new play by Bruntwood Playwriting Prize winner Phil Porter, Blink is an exciting collaboration between Soho Theatre – London's most vibrant venue for new writing, comedy and cabaret – and internationally acclaimed, Fringe First winners nabakov.

Education Visits & Workshops:

- **FREE** Teacher/Group Leader with groups of 10+
- **FREE** Post-show Q&A
- Email education@thegarage.org.uk to enquire about workshop & education opportunities
- More information including **ONLINE TRAILER:** <http://www.thegarage.org.uk/curtain-up-presents-blink-eid318.html>

BOOKING NOW OPEN. FOR GROUP BOOKINGS CALL BOX OFFICE: 01603 598646
FOR WORKSHOPS CALL TONI: 01603 283382 / EMAIL: EDUCATION@THEGARAGE.ORG.UK

*******HALF TERM FUN*******

Title: BLAST OFF!

Creative/Production Credits: House Theatre, The Tobacco Factory present Kid Carpet's Blast Off

Performance Dates/Times: Monday 17 February 2014, 11am; 2pm

Running Time: 50m (No interval)

Key Stage: KS1+ (4+)

Category: **CHILDRENS THEATRE**

Description:



The Noisy Animals are THE biggest band in the world. They are about to blast off into outer space on a mission to find their brand new sound for their latest hit album.

In a super duper really really fast adventure around a rock 'n' roll musical universe, our friends encounter noisy planets, cheesed-off nursery rhyme characters, shooting stars and Shakespeare.

What discoveries will they make on their travels? Will they get lost in a black hole? Why are ping pong balls flying around the room? Will they ever come back down to Earth?

Kid Carpet and The Noisy Animals are back, with a brand new adventure. BLAST OFF! involves some very lo-fi technological wizardry, turning ordinary everyday toys into magical superstars with the aid of a video camera, lots of laughs, silliness and live music.

Bring your rock-out attitude and your astronaut costume (fancy dress optional!) because we're going to space.

10... 9... 8... 7... 6... 5... 4... 3... 2... 1... BLAST OFF!

Group Visits:

- This performance will be part of FAMILY FUN DAY providing workshops and activities in addition to the performance. Full details will be available from our website in January.
- **FREE** Teacher/Group Leader with groups of 10+
- We are happy to liaise with you to organize group visits as part of your half term break enrichment activities
- View **ONLINE TRAILER:** <http://www.thegarage.org.uk/curtain-up-presents-blast-off-eid319.html>

**BOOKING NOW OPEN. FOR GROUP BOOKINGS CALL BOX OFFICE: 01603 598646
FOR WORKSHOPS CALL TONI: 01603 283382 / EMAIL: EDUCATION@THEGARAGE.ORG.UK**

*******HALF TERM FUN*******

Title: THE PILLOW MAKER

Creative/Production Credits: Bright Shadow Theatre Company

Performance Dates/Times: Tuesday 18th February, 10am; 12pm; 2pm

Running Time: 60m (No interval)

Key Stage: 1yr+ (accompanied)

Content Guide:

Category: CHILDREN THEATRE

Description:

The Pillow Maker is an interactive adventure show created for young families.

Mr Pillowmaker comes from a long line of Pillow Makers. Throughout all time they have used magical Stuff to fill their super soft, super plumpy pillows for beds and heads across the land.

One day, Mr Pillowmaker finds that for the first time EVER, his Stuff Box is empty and now he doesn't have anything to stuff his pillows with! Join Mr Pillowmaker inside Pillow Cottage and take part in his adventure to discover how to make his magical Stuff come back again.

Taking place inside a cosy cardboard set, this is a highly participatory, musical and sensory theatre adventure with heart, created for 1-5 year olds and their families

Group Visits:

- This performance will be part of FAMILY FUN DAY providing workshops and activities in addition to the performance. Full details will be available from our website in January.
- **FREE** Teacher/group leader goes free with groups of 10+
- We are happy to liaise with you to organize group visits as part of your half term enrichment activities
- More information: <http://www.thegarage.org.uk/curtain-up-presents-the-pillow-maker-eid359.html>



**BOOKING NOW OPEN. FOR GROUP BOOKINGS CALL BOX OFFICE: 01603 598646
FOR WORKSHOPS CALL TONI: 01603 283382 / EMAIL: EDUCATION@THEGARAGE.ORG.UK**

Title: HOPELESSLY DEVOTED written by Kate Tempest

Creative/Production credits: A Paines Plough and Birmingham Repertory Theatre production

Performance Dates/Times: Wednesday 26th February 2014, 7:30pm

Running Time: 1hr 15m + post show Q&A (No interval)

Category: [THEATRE](#) - New Writing /Contemporary

KeyStage: KS4 + (14yrs+)

Content Guide:

Content	Rating
Discrimination	Minimal
Language	Moderate
Drugs/Alcohol	Minimal
Horror	Minimal
Nudity	Minimal
Sex	Moderate
Themes	Moderate
Violence	Minimal

About This Production:

- Presented *Wasted* at The Garage in Spring 13
- Collaboration between award-winning rapper Kate Tempest & Paines Plough
- UK exclusive – Norwich is first date of national tour!
- Exciting fusion of spoken word, live music and theatre
- Suits A Level / Btec Drama / English / Music students

Description:

Chess is in prison. Facing a lengthy sentence, her cell mate becomes her soul mate. But when Serena is given parole, Chess faces total isolation.

Hope comes in the form of a music producer looking for a reason to love music again. She finds a powerful voice in Chess. But to harness her talent, Chess must first face her past.

Following her smash-hit debut *WASTED*, Kate Tempest's incendiary new play combines lyrical fireworks with exhilarating live music.

Education Visits & Workshops:

- **FREE** Teacher/Group Leader with groups of 10+
- **FREE** Post-show Q&A.
- Email education@thegarage.org.uk to enquire about workshop & education opportunities
- More information: <http://www.thegarage.org.uk/curtain-up-presents-hopelessly-devoted-eid321.html>



**BOOKING NOW OPEN. FOR GROUP BOOKINGS CALL BOX OFFICE: 01603 598646
FOR WORKSHOPS CALL TONI: 01603 283382 / EMAIL: EDUCATION@THEGARAGE.ORG.UK**

Title: AMATEUR GIRL written by Amanda Whittington

Creative/Production credits: Fifth Word Theatre Company

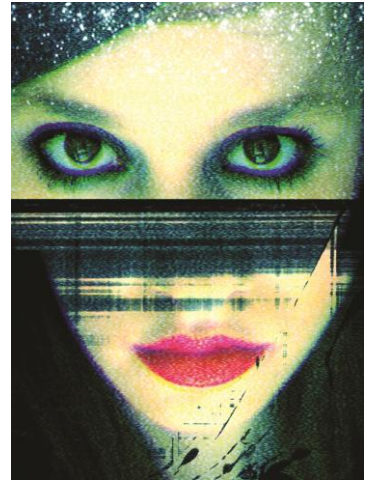
Performance Dates/Times: Friday 28th February 2014, 7:30pm

Running Time: 1hr, 10m + post show Q&A (No interval)

Category: [THEATRE](#) - Contemporary / New Writing

KeyStage: KS4 + (16yrs+)

Content Guide:



Content	Rating
Discrimination	Strong
Language	Moderate
Drugs/Alcohol	Moderate
Horror	Minimal
Nudity	Moderate
Sex	Strong
Themes	Strong
Violence	Strong

About This Production:

- Presented *Bones* at The Garage autumn 2012
- Hard hitting, strong new writing
- Company integrates media into productions
- Useful springboard for further work
- Would suit PSHE / Drama / English / Production students

Description:

From the producers of smash hit show *Bones*, Fifth Word returns with Amanda Whittington's play *Amateur Girl*

Gary says it's not about glamour no more. Men want girls in their own home, them who look like your neighbour or your best mate's wife. Them who you could have in real life. Amateur girls.

Julie is a likeable auxiliary nurse, working long hours for a low wage in a Nottingham hospital. Clubbing with the girls breaks the routine but Julie longs for some real excitement and a bit of spare cash.

When her new boyfriend buys a camcorder, Julie sees a lucrative new career on the horizon. She's drawn into the world of the amateur girls; the so-called stars of home-made pornography on satellite TV and the internet. Yet Julie's new life can't stay secret for long. What starts as a bit of fun becomes anything but.

Based on real-life stories, *Amateur Girl* is a hard-hitting, poignant yet wryly amusing play about the reality behind the fantasy business.

Education Visits & Workshops:

- **FREE** Teacher/Group Leader with groups of 10+
- **FREE** Post-show Q&A.
- Email education@thegarage.org.uk to enquire about workshop & education opportunities
- More Information: <http://www.thegarage.org.uk/curtain-up-presents-amateur-girl-eid322.html>

BOOKING NOW OPEN. FOR GROUP BOOKINGS CALL BOX OFFICE: 01603 598646

FOR WORKSHOPS CALL TONI: 01603 283382 / EMAIL: EDUCATION@THEGARAGE.ORG.UK

Title: CHALK FARM

Creative/Production credits: Thickskin Theatre Company

Performance Dates/Times: Thursday 24th & Friday 25th April 2014,
7:30pm

Running Time: 1hr + post show Q&A (No interval)

Category: [THEATRE](#) - New Writing /Contemporary

KeyStage: KS3/4 + (14yrs+)

Content Guide: Not available at this time.



Content	Rating
Discrimination	Strong
Language	Strong
Drugs/Alcohol	Moderate
Horror	Minimal
Nudity	Minimal
Sex	Minimal
Themes	Moderate
Violence	Moderate

About This Production:

- Presented *The Static* at The Garage in autumn 2012
- Tackles real life events (London 2011 riots)
- Celebrated show at Edinburgh Festival Fringe 2013
- Visually striking use of media
- Would suit PSHE / Drama / English / Production students

Description:

Award-winning playwrights Kieran Hurley and AJ Taudevin, join forces with highly-acclaimed ThickSkin (Blackout, The Static), in this explosive new play about love and blame in the aftermath of the 2011 London riots.

Through a mother's desire for safety and acceptance and a young boy's need to be recognised, to be part of something, Chalk Farm offers an uncompromising and ultimately heartbreaking examination of a fractured society.

*"A point marked in time when it all began to crack
When the game is over, when the surface is ripped open
Showing what the world really looks like.
And we were there."*

Chalk Farm features ThickSkin's trademark style of heart-stopping visual theatre, fusing multi-media, movement and text.

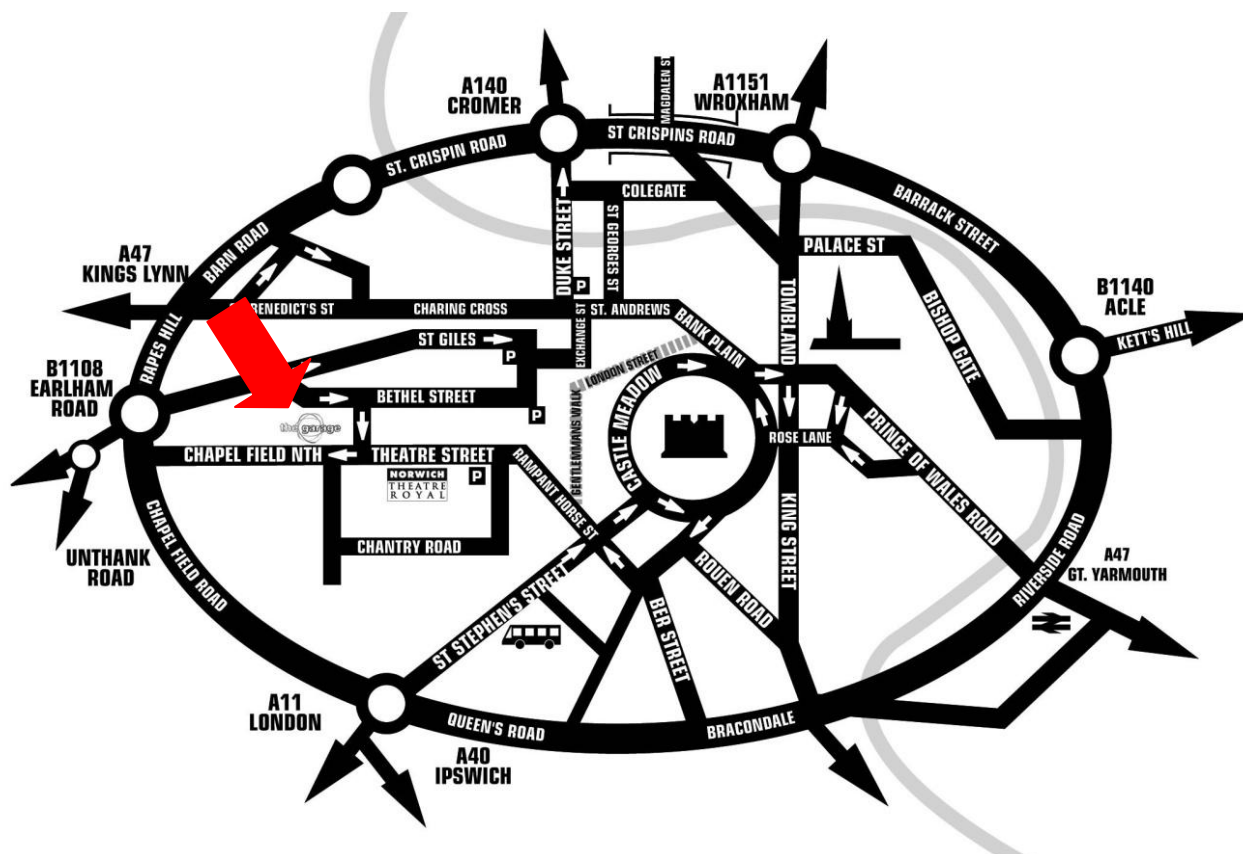
Education Visits & Workshops:

- **FREE** Teacher/Group Leader with groups of 10+
- **FREE** Post-show Q&A.
- Email education@thegarage.org.uk to enquire about workshop & education opportunities
- More information: <http://www.thegarage.org.uk/curtain-up-presents-chalk-farm-eid323.html>

**BOOKING NOW OPEN. FOR GROUP BOOKINGS CALL BOX OFFICE: 01603 598646
FOR WORKSHOPS CALL TONI: 01603 283382 / EMAIL: EDUCATION@THEGARAGE.ORG.UK**

Locating Us...

The Garage is located on Chapel Field North, opposite Chapel field Gardens and not far from Norwich



Theatre Royal. Our full address is : 14 Chapel Field North, Norwich, Norfolk, NR21NY.

Parking: We are near to many car parks including Chapelfield Norwich, The Forum and Castle Mall. Coach's can unload opposite Norwich Theatre Royal on Theatre Street and it's a very short walk to the venue. We have a loading bay to the front of our building which is big enough to accommodate a minibus to unload however it can get very busy and we are not able to guarantee access.

Contact us...

If you would like to talk to us about any aspect of your planned visit, please contact us:

Education Dept Email: education@thegarage.org.uk

Education Dept Telephone: 01603 283366

Box Office: 01603 598646

Main Reception: 01603 283382

Website: www.thegarage.org.uk

Twitter: @_thegarage #CurtainUp!

Facebook: garage.norwich

**BOOKING NOW OPEN. FOR GROUP BOOKINGS CALL BOX OFFICE: 01603 598646
FOR WORKSHOPS CALL TONI: 01603 283382 / EMAIL: EDUCATION@THEGARAGE.ORG.UK**

**BOOKING NOW OPEN. FOR GROUP BOOKINGS CALL BOX OFFICE: 01603 598646
FOR WORKSHOPS CALL TONI: 01603 283382 / EMAIL: EDUCATION@THEGARAGE.ORG.UK**