

Junior Education Newsletter

NORWICH
THEATRE
ROYAL

Spring 2014 and Norwich Theatre Royal once again brings you the best productions in the region to entertain and delight you and your children.

A welcome return for children's favourites *Peppa Pig* in a brand new adventure **Peppa Pig's Big Splash** and *Angelina Ballerina* wants you to join in her **Mousical**.

For the older child we have two productions from Northern Ballet:-

Northern Ballet's *A Midsummer Night's Dream*, an Olivier Award nominated ballet, with breathtaking sets and beautiful costumes, all set to the music of Brahms and Mendelssohn.

Northern Ballet's *Cinderella*, a new production, which premiered in Leeds for Christmas 2013. Set in Imperial Russia at a time when superstitious people believe in the possibility of magic, Northern Ballet's new adaptation of this classic fairy-tale sees heartbreak turn to joy as the unstoppable power of young love conquers all.

Don't forget our **Open Day** which is featured below, a great family day out and absolutely **FREE**.

Finally, Norwich Theatre Royal's pantomime for 2014/15 will be *Peter Pan* the panto, Richard Gauntlett will be returning to write, direct and star as Smee.

!Watch out for Competitions in The Forum Children's Library & Waterstones Book Shop!

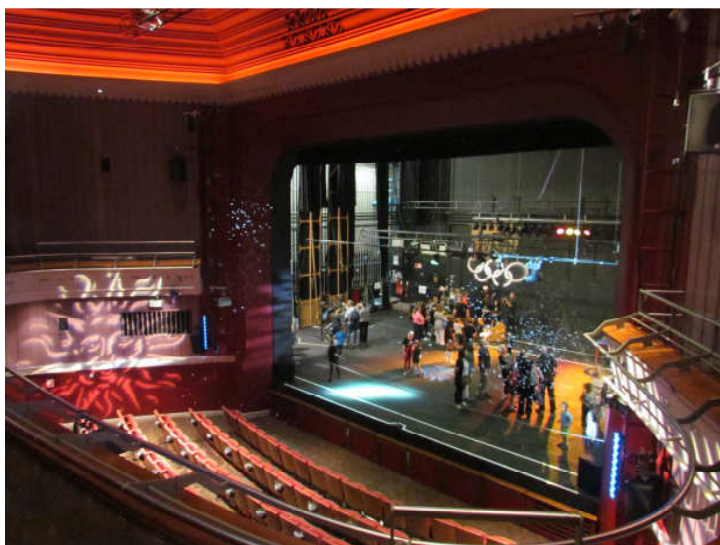
This newsletter is also available online at www.theatreroyalnorwich.co.uk

FREE ~ NORWICH THEATRE ROYAL 'OPEN DAY' ~ FREE

Saturday 23rd August 2014, 10am - 4pm

Come and have a look behind the scenes. See the dressing rooms where the stars prepare for their performances. Stand centre stage in the spotlight. Have a go at lighting, sound, 'flying' and stage management. Loads of activities, talks and demonstrations. Ideal for a family day out.

Be Centre Stage



Try on a Costume



History & Activities



Peppa Pig's Big Splash
Wednesday 27th - Thursday 28th August 2014
10.00am & 1.00pm Daily

Come and join Peppa and her friends for another all-singing, all-dancing adventure full of songs, games and muddy puddles! The nursery roof is leaking and Peppa and her friends need to fix it - quick! As they set up a fete to raise the money for the repairs, they'll need your help to make sure everything goes smoothly.

Join Peppa, George, Mummy and Daddy Pig, as well as Danny Dog, Pedro Pony, Suzy Sheep as they have fun putting up bunting, running stalls and organising a great day out. There's also a Champion Puddle Jumping competition judged by Mr Potato where everyone gets wet and Peppa needs to find her Golden Boots!

Prices: Adults £15.50 - £5.50, Under 18's: £13.50 - £5.50, Groups 10+ - 10% Off, Under Ones Free
Family Ticket: £54.00 Bands A - C all performances, (4 People, including at least one adult)

Activities and Games at www.peppapig.com & www.nickjr.com

Angelina Ballerina the Mousical
Sunday 24th - Monday 25th August 2014
Sun 4.00pm & Mon 11.00am, 2.00pm & 4.30pm

Angelina Ballerina pirouettes onto the stage in her musical show – Angelina and her friends think their dreams have come true when Camembert Academy wins the opportunity to appear in their favourite television programme 'Dancing With Mice!', but when the girls and boys have very different ideas for the show and just can't seem to agree on anything, it's up to Angelina as Dance Captain to ensure that the show goes ahead. So put on your ballet shoes and join Angelina, Alice, Gracie, Viki, AJ and Marco for the most stupendous Mousical of the year!

Prices: Bands A - D £12.50, E - £5.50, **Under Threes Free**, Groups of 10+, £10 each

Activities, Games and Learning at :- www.angelinaballerina.com



Peter Pan
Thursday 18th December 2014 - Sunday 18th January 2015

Prices: £21.00 - £5.50, Under 18s Special Price £2.00 off Bands A - D, Under Threes Free

Written, Directed by and Starring Richard Gauntlett as Smee
More casting and information to be announced

Signed performances: Saturday 17th January, 2.30pm & 7.30pm - (Signer: Jim Dunne)

Audio Described performances: Sunday 11th January, 1.00pm & Friday 16th January, 6.30pm
(by M Piper & C Williams)

RELAXED PERFORMANCE: ~ Wednesday 14th January 2015 @ 5.30pm

A supportive and relaxed environment throughout the theatre especially suited to those with autism and a wide range of disabilities.

Patrons are free to move around and make noise during this performance. It is OK for patrons to leave the auditorium and return during the show (There will be a break-out room with show relay in case patrons want to take a break from the auditorium during the show.). There will be no light-up toys sold by the theatre for this performance.

For more information or to book phone Box Office: 01603 630000



Shows for older children & families

Northern Ballet's A Midsummer Night's Dream

Tuesday 13th - Saturday 17th May 2014

See the romantic antics of a touring dance company played out on one magical night as the company travels by sleeper train from London to Edinburgh.

It's the final rehearsal and emotions run high as artistic temperaments clash with romantic entanglements. The time comes to leave for Edinburgh but the tensions continue on board the train and as the company settle down for the night, the train enters a tunnel and the dream begins.

Please visit www.northernballet.com for education resources and further information.

Prices: £36.50 - £6.50, Schools: Bands C - D £7.00, Thursday Matinee ONLY

Under 18's: Bands A & B £10.00 OFF, Tuesday - Thursday Evenings & Matinees

Family Ticket: Bands A & B £80 (4 people, Max 2 Adults), buy additional child seats for £10 each, Tuesday - Friday evenings ONLY, Group Rates: Tuesday - Thursday Evenings & Matinees



Northern Ballet's Cinderella

Tuesday 7th - Saturday 11th October 2014

A beautiful summer's day turns into tragedy. Devastated by the loss of her father and excluded by her cruel stepmother and sisters, Cinderella finds solace on the frozen lake where she first sees her Prince Charming.

As romance blossoms, a magical encounter in a market place changes Cinderella's destiny. Journey through elegant Russia, with breathtaking winter scenes and opulent ballrooms created by Duncan Hayler (Beauty & the Beast, A Midsummer Night's Dream). With a new score from Philip Feeney played live by Northern Ballet Sinfonia, you will not want to miss this unforgettable ballet.

Please visit www.northernballet.com for education resources and further information.

Prices: £36.50 - £6.50, Schools: Bands C - D £7.00 - Thursday Matinee ONLY

Under 18's: Bands A & B £10.00 OFF, Tuesday - Thursday Evenings & Matinees

Family Ticket: Bands A & B £80 (4 people, Max 2 Adults), buy up to 3 additional child seats for £10 each, Tuesday - Friday evenings ONLY

Group Rates: Tuesday - Thursday Evenings & Matinees

Please note that this production contains short periods of flashing and strobe lighting effects!



WE'RE GOING TO THE THEATRE!

For first time younger visitors, the huge auditorium and rush of customers can seem daunting, so we've produced a video to give them an early look at the different areas of the theatre as well as the etiquette and the behaviour expected of them.

The video addresses rules such as flash photography, the consumption of sweets and how to understand your ticket and take your seat.

The film is also meant as a guide for teachers/carers to show schoolchildren what a trip to Norwich Theatre Royal might be like and how to behave whilst there. It is primarily, but not exclusively, aimed at those who may not have been to a theatre before.

www.theatreroyalnorwich.co.uk

Go to our website, (as above)

Education Section, 'School & Groups', then click on -

A Guide to Visiting the Theatre.



WHAT IF...?

- ⇒ You're organising a group to see a show? Then make life easier on the day by pre-ordering interval ice creams or drinks. Forms are sent out with all group bookings but telephone us if you need spare copies.
- ⇒ Your party is bringing a packed meal to eat after the show? Telephone us to see whether an area can be made available for you all. Space is limited and offered on a first-come, first-served basis.
- ⇒ You're bringing under threes to a children's performance? Buggies and pushchairs may be collapsed and stored in certain areas of the theatre, at owners' risk.

Useful Norwich Theatre Royal telephone contacts:

Front of House	01603 598540
Restaurant Booking	01603 598577
Box Office	01603 630000

If you need more information or you no longer wish to receive this newsletter, please contact us at: **Education Department, Norwich Theatre Royal, Theatre Street, Norwich, NR2 1RL** or call us on **01603 598523**, or Email: m.crisp@theatreroyalnorwich.co.uk
(Registered Charity No: 262259)

Norwich Theatre Royal's Education Department is generously supported by
Educational Foundation of Alderman John Norman, Julian Claxton Photography, Margaret Guido's Charitable Trust, The Paul Bassham Charitable Trust, The Foundation of Joanna Scott, Garfield Weston Foundation, The John Jarrold Trust, Geoffrey Watling Trust, Town Close Charitable Trust & NTR Ambassadors

