

Gressenhall Farm and Workhouse Schools event programme: September 2015 to July 2016

24th August 2015

Dear Colleague,

I am pleased to enclose our 2015-16 schools event programme for Reception, KS1 and KS2.

I would also like to bring to your attention a limited number of **£100 travel bursaries** which your school may qualify for.

Voices from the Workhouse development

Gressenhall is gearing up for an exciting HLF funded redevelopment of our workhouse displays. The vast majority of our schools programme will be unaffected by the development. However, I am afraid that we will be unable to offer our popular Victorian Christmas events in December 2015 or our Workhouse Whodunnit in February 2016. More information about the new exhibition will follow in the New Year.

We look forward to hearing from you.

Yours sincerely,



Jan Pitman
Learning Manager
Gressenhall Farm and Workhouse
Dereham
NR20 4DR



Supported using public funding by
**ARTS COUNCIL
ENGLAND**



Discover KS2 Stone Age Britain



GRESENHALL
FARM AND WORKHOUSE
MUSEUM OF NORFOLK LIFE

Gressenhall Farm and Workhouse Neolithic Britain



Hunter-gatherer or First Farmer? Hunt for animals in the woods, get to grips with Neolithic tools, plough the field with the rip and plough and explore our Prehistory Gallery. A hands-on and fully accessible day event for all your pupils. Can you survive our Neolithic challenge?

2015: September 29, 30

October 2, 7, 9

November 5

2016: April 26, 27, 28, 29

May 4, 5, 6, 17, 18, 19, 20

Other dates available on request

£5.00 per pupil



'It has brought the subject to life for adults and children – thank you.'

'Enabled children to see first-hand a period in history which is not easily evidenced. We will be back every year!'

'An essential visit for all Key Stage 2 children.'

For more information, enquiries and bookings

tel: 01362 869251

email: gressenhall.museum@norfolk.gov.uk

web: www.museums.norfolk.gov.uk/Learning/Gressenhall_Learning



GRESSENHALL
FARM AND WORKHOUSE
MUSEUM OF NORFOLK LIFE

Gressenhall Farm and Workhouse

Schools event programme

September 2015 to July 2016

KS1/Reception

Can't find a day that suits you? Contact us if you would like to **book a day event on another day**. We will do our best to accommodate you.

Once Upon A Time

Who has hidden the precious objects from the Museum of Fairytales? Can you help the curator find them all? Meet the Wicked Witch and make potions in the woods. Quest with Jack to the Giant's castle and help poor Cinders keep her cottage clean. An active day promoting communication and literacy skills. One of our most popular KS1 days, book early to avoid disappointment

2016: June 21, 22, 23, 24, 28, 29, 30 July 1, 5, 6, 7, 8

£4.00 per child

The Three Little Pigs

Huff and puff your way through the story of the three little pigs. Make your own pig or wolf from woodland materials, explore the Brick House and have a go at keeping it clean and tidy. Find out where animals live on the farm and build your own home of sticks or straw to keep the pigs safe and warm.

2016: May 24, 25, 26, 27

£4.00 per child

Three Billy Goats Gruff

Work together to explore the story of the Billy Goats Gruff through sound and movement. Build a trippety-trap bridge and create an ugly troll. Explore the natural surroundings of the farm and meet our very own goats!

2016: May 24, 25, 26, 27

£4.00 per child

Food and Farming

Find out where our food comes from with an active day on the farm and in the garden. Help the farmer with the work on our traditional farm, meet the animals and see how we grow wheat to make bread. Keep the plants safe in our Cottage Garden, weigh and sort seeds in the Seed Merchants' shop and enjoy a drama session all about growing plants.

2016: May 10, 11, 12, 13, 17, 18, 19, 20; June 14, 15, 16, 17

£4.00 per child



Spring on the Farm

Experience Victorian life on the farm. Meet the shepherd, hear about his busy Spring and the lambs he looks after. Help the farmer's wife with the spring cleaning and get the washing done in the washhouse. There's also time to see the baby animals on the farm.

2016: March 15, 16, 17, 18, 21, 22, 23, 24 April 12, 13, 14, 15

£4.00 per child

Homes Long Ago

Discover what it was like to live in Norfolk one hundred years ago with our costumed characters. The Vicar is coming to tea. Can you help to make everything spick and span? Lend a hand with the cooking and make the tea in Cherry Tree Cottage, scrub and mangle your way through old-fashioned washing in the Washhouse and find out about life in the Farmhouse through an active object handling session.

2015: October 13, 14, 15, 16

2016: March 1, 2, 3, 4, 8, 9, 10, 11
May 10, 11, 12, 13

April 19, 20, 21, 22
June 14, 15, 16, 17

£4.00 per child

Life within living memory: the 1950s

Find out about life within living memory as we prepare for our Coronation party. Help with the cooking in Cherry Tree Cottage and make sure that everything is spick and span. Buy ingredients from the Village Shop, play with 1950s toys and visit our 1950s room to see how life has changed. This hands-on day helps children to identify similarities and differences between today and the past.

2015: October 13, 14, 15, 16

2016: March 1, 2, 3, 4, 8, 9, 10, 11
May 10, 11, 12, 13

April 19, 20, 21, 22
June 14, 15, 16, 17

£4.00 per child

There are lots of different ways to visit Gressenhall Farm and Workhouse

- Book for a **special school event** (see above).
- Come on a **teacher-led visit**.
- Enhance your teacher-led visit with an **additional activity or activities**: object handling, Victorian cooking and old fashioned washing.
- **Work with us** to develop a programme which **fits your learning needs**.

For more information, enquiries and bookings

tel: 01362 869251

email: gressenhall.museum@norfolk.gov.uk





GRESSENHALL
FARM AND WORKHOUSE
MUSEUM OF NORFOLK LIFE

Gressenhall Farm and Workhouse

Schools event programme

September 2015 to July 2016

KS2

Can't find a day that suits you? Contact us if you would like to **book a day event on another day**. We will do our best to accommodate you.

Neolithic Britain

Hunter Gatherer or First Farmer? Explore life 5000 years ago using our fantastic Neolithic collections and wonderful site. Hunt for animals in the woods, get to grips with Neolithic tools, plough the field with the ard plough and make a Neolithic shelter. Help your children to understand this new area of the curriculum. Can you survive our Neolithic challenge?

2015: September 29, 30

October 2, 7, 9 November 5

2016: April 26, 27, 28, 29

May: 4, 5, 6

£5.00 per child



Victorian Activity Day

Can you solve the mystery of the stolen silver candlesticks? Meet our costumed characters and step back in time for a day of discovery. Work in the fields with the heavy horses, take a Victorian school lesson, find out what life was like in the workhouse and lend a hand in a Victorian kitchen and washhouse.

2015: September 15, 16, 17, 18 November 6, 10, 11, 12, 13

2016: May 17, 18, 19, 20

June 7, 8, 9, 10

£5.00 per child



Evacuees (Home Front Heroes)

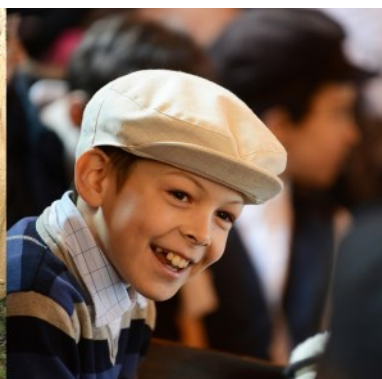
Join our costumed characters and discover the Home Front during WWII. Meet a Women's Land Army girl and 'Dig for Victory' with the heavy horses. Take cover in the air raid shelter and let the ARP warden show you how to use a stirrup pump. 'Make do and Mend' with a worried housewife, find out about rationing in the Village Shop and help win the war with the Home Guard.

2015: September 15, 16, 17, 18 November 4, 10, 11, 12, 13

2016: May 17, 18, 19, 20

June 7, 8, 9, 10

£5.00 per child



Victorian Whodunnit?

Find out about life in Victorian England through our dramatic Whodunnit. Meet rich and poor costumed characters, and engage in active learning sessions in our Victorian schoolroom, cottage kitchen, workhouse and laundry. Can you help discover who has committed the terrible crime? This day encourages communication skills and is perfect as the basis for literacy work. To enter into the spirit of Victorian life we invite you to come in costume.

2015: November 17, 18, 19, 20, 25, 26, 27, 28

£5.00 per child



World War One: Annie's War

An active day to help your children understand the local impact of national events and investigate different attitudes to the war. See World War One through a child's eyes in this sensitive and accessible day event. Meet her friends and family: soldier, nurse, land girl and schoolmaster and find out how the War affects them. The day ends with a morale-boosting film and magic lantern show, as the villagers raise money for the troops on the front line.

2015: September 15, 16, 17, 18 November 3, 10, 11, 12, 13

2016: May 17, 18, 19, 20 June 7, 8, 9, 10

£5.00 per child



There are lots of different ways you can visit Gressenhall Farm and Workhouse

- Book for a **special school event** (see above).
- Come on a **teacher-led visit**.
- Enhance your teacher-led visit with an **additional activity or activities**: object handling, Victorian cooking or washing and food and farming.

For more information, enquiries and bookings

tel: 01362 869251

email: gressenhall.museum@norfolk.gov.uk

web: www.museums.norfolk.gov.uk/Learning/Gressenhall_Learning

Your school may qualify for **help with travel costs**.

