



Cambridge Archaeology Learning Foundation



UNIVERSITY OF
CAMBRIDGE

Archaeology for Primary schools

Programme offering hands-on teaching for KS1 and KS2 pupils.

Sessions designed to introduce concepts of the past, encourage lateral thinking and use of multiple subject skills.

Learning is supported by interactive activities using **real** artefacts.

Length of Session: 2 hours.

First Lesson (1hr)

Part 1: Historical Enquiry

What do archaeologists do.

What kind of artefacts do we find.

Four interactive activities examining different types of evidence archaeologist use.

Second Lesson (1hr)

Part 2: Reliability of evidence

How do archaeological remains build up and how we can tell how old things are.

Mock excavation in the classroom !

Part 3: Concepts and Change

Examining how we interpret objects to tell us about the past and how people lived differently.

'Museum in a box' activity compares real and re-production objects from different periods. Pupils make their own interpretations.

Cost and details:

£300 based on delivery of session to two classes (morning and afternoon) and assembly to the whole school. Other rates available.

Teaching sessions take place in the classroom and are taught by an archaeologist from the University of Cambridge. Follow up activities suggested .

Teaching Aims:

How do we find out what happened in the past?

- * What is archaeology
- * What do we find
- * How does it get there
- * What can it tell us

See photos, quotes, and how to get in contact at www.access.arch.cam.ac.uk/schools/CALF

Teaching keys aims of the Key Stage 1 & 2 History curriculum

- **Methods** of historical enquiry
- Historical **concepts** of continuity and change
- How **evidence** is use to make historical claims
 - Historical **perspective**

Covering the stone age to the present, including local history.

For further details and discuss a visit to your school contact

Access Cambridge Archaeology

Email: access@arch.cam.ac.uk

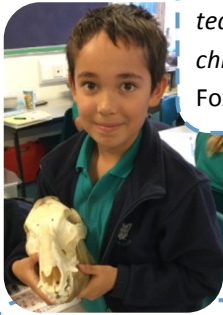
Phone: 01223 761519

www.access.arch.cam.ac.uk



**Access
Cambridge
Archaeology**

Archaeology for Primary Schools: Cambridge Archaeology Learning Foundation



"Approachable, relaxed teaching style that the children related to well."
Foxton Primary



"The use of resources were excellent and the children enjoyed the hands on learning. Having an expert guiding the sessions was really good." Over Primary School



UNIVERSITY OF
CAMBRIDGE



Access
Cambridge
Archaeology

A new programme offering **hands-on** teaching for KS1 & KS2 pupils.

Sessions designed to introduce concepts of the past, encourage **lateral thinking** and use of **multiple subject** skills. Learning is supported by interactive activities using **real** artefacts.

"Actually having a chance to see real artefacts and speak to each other trying to figure out what



and where things were from and what they were.

Really useful and motivating. Thank you." St Laurence Primary School



Lessons within your classroom

- 2 hours sessions with a class
- Range of activities
- Covers stone age to the present and local history

Sessions can be tailored according to your needs and budget



Teaching History National Curriculum aims

- **Methods** of historical enquiry
- Historical **concepts** of continuity and change
- How **evidence** is used to make historical claims
- Historical **perspective**



"Brilliant morning, would thoroughly recommend this. Emily was in total command of the class from the beginning and had them hooked throughout." Somerlyton Primary

Contact

Email: access@arch.cam.ac.uk

Phone: 01223 761519

www.access.arch.cam.ac.uk/schools/CALF

"A good mix of both hands on and thinking. Great range of artefacts." Foxton Primary

