



*Re-think, re-create, re-new*

Units 5 & 6, Collers Way, Reepham, NORWICH, NR10 4SW

Dear Headteacher

As part of your aim to make your school more eco-aware, we think you may be interested in Norfolk Charity, **Scrapbox**, which provides reclaimed resources for creative activities at very low cost and can help stretch your budget further. You may already be a member and if so, thank you for your continued support or you may have heard of us but just not got around to coming over to see our Aladdin's Cave of resources!

**Scrapbox** offers an alternative and eco-friendly way to source Art, Craft, Design Technology, Textile, Science project etc needs at **very low cost**. Not only can we help you stretch your budget further, but you will also be helping to prevent perfectly re-usable resources from going into Landfill and educating the children in your care about our need to re-use resources as much as possible.

Based in Reepham, just 12 miles from Norwich, **Scrapbox** is a Registered Charity which has been running since 1995. One of about 70 Scrapstores around the country, and the only one in Norfolk and Suffolk, our aim is to reclaim clean and safe waste, "reject" or surplus products and materials, donated predominantly by local manufacturers and businesses, which would otherwise end up in landfill, and to share these, as affordable resources, within our local communities for creative re-use.

Our members include Schools and Colleges, Nurseries and Playgroups, Activity centres, Art and Craft Groups, Music and Theatrical Organisations and Community Artists as well as individuals who enjoy creative hobbies. We run a membership scheme - for a small annual registration fee (**currently £10**), members can enjoy the benefit of purchasing all kinds of creative materials at very low cost, with friendly staff on hand to assist with sourcing the things you need for your projects if you'd like a bit of help.

Choose from an amazing variety of resources including fabrics, yarns and haberdashery: paper, card and stationery items: paints, crayons and art resources: plastics, wood, lino and carpet pieces: lots of items suitable for loose parts play and our specialist range of die-cut shapes which we have made up in packs of 10 or 30 to suit your class needs. Our stock changes very quickly, and although we can never guarantee that we'll always have a certain item, a lot of our products do make a regular appearance on our shelves!

**Scrapbox** is open on **Wednesdays and Thursdays from 2pm until 6pm**, (so teachers get the opportunity to pop over after school) and on **Saturdays from 10am until 2pm**.

See our current brochure for more details of our Charity and how we can help YOUR school.

Please feel free to contact us if you would like any further information:-

Tel: 01603 871328 (We are on site on Weds, Thurs and Saturdays only, so feel free to leave us a message and we'll get back to you as soon as possible).

Email us: [info.scrapbox@gmail.com](mailto:info.scrapbox@gmail.com)

We're also on Facebook, where we advertise new stock arrivals and Special Offers and share images of some of the fabulous re-use creations made by our members to inspire others to get eco-crafty too.

Check us out at [www.facebook.com/mini-scrapbox](http://www.facebook.com/mini-scrapbox) and also on Pinterest at [www.pinterest.com/miniscrapbox](http://www.pinterest.com/miniscrapbox) where we have lots of boards, full of creative ideas for using the resources we stock regularly.

Looking forward to having your school on board!

*Tula Chenery*

Manager

*We have one world.  
We are consuming for three worlds.  
By re-using what we can,  
we maximise the life of  
existing resources.*

We are always looking for new donor Companies, so if you run or know of a local business which currently has to pay to dispose of waste which could be suitable for creative re-use, please let us know. We can collect throughout the county.



### Opening hours:

**Wednesday & Thursday 2-6pm**

**Saturday 10-2pm**

(plus other times by prior arrangement)

Contact: *Tula Chenery*, Manager

**Units 5 & 6 Collers Way  
Wood Dalling Road  
Reepham  
NORWICH NR10 4SW  
Tel: 01603 873128**

Email: [info.scrapbox@gmail.com](mailto:info.scrapbox@gmail.com)

Website: [www.miniscrapbox.org.uk](http://www.miniscrapbox.org.uk)



[www.facebook.com/mini-scrapbox](http://www.facebook.com/mini-scrapbox)



[www.pinterest.com/miniscrapbox](http://www.pinterest.com/miniscrapbox)



[mini.scrapbox](https://www.instagram.com/mini.scrapbox)

### How to find us:

Off the B1145 from Aylsham to Reepham, take the turning on the right just before the old Railway Bridge (just before Kerri's Pine at Reepham Old Station).



Registered Charity No. 1050261

**Re-think** ... *how we use world resources, through education, craft and play*

**Re-create** ... *re-use and re-purpose existing resources*

**Re-new** ... *transform rejects into desirables!*



## What is SCRAPBOX?

SCRAPBOX is an Accredited Scrapstore, one of approximately 70 Scrapstores throughout the country and the only one in Norfolk.

We collect, process and sell a wide variety of clean, safe waste materials, mainly donated by local commercial companies which can then be RE-USED in the community by schools and playgroups, art, drama and music workshops, clubs and individuals for creative art and craft purposes.

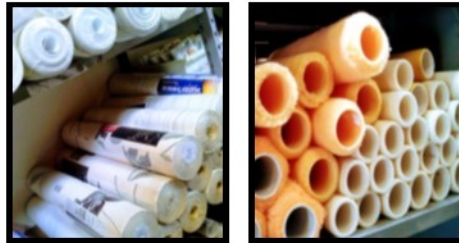
Our aim is to encourage and educate about RE-USE and to prevent perfectly re-usable materials from going into landfill.



## SCRAPBOX has a wide variety of affordable resources

For example:

- Paper of all kinds, Card, Folders, Tubing, Calendars, Wallpaper, Wrapping paper
- Fabrics—we have a varied selection of fabrics of all kinds, some on the roll, some in pieces
- Zips, reels of thread, wool for knitting and rug-making
- Foam, plastic cartons and containers
- DIY materials eg. paint rollers, trays, framing materials...and so much more!!!



## Cost of membership

SCRAPBOX is run on a Membership basis which helps towards our basic running costs. Registration is currently **just £10 a year**, renewable annually.

## SCRAPBOX aims to benefit

- **Companies & Businesses** - by us taking away their re-usable “waste” which is costly to dispose of, relieving landfill space which is running out in Norfolk.
- **Local Community Groups and other organisations** - by offering a diverse range of **affordable materials** giving them the opportunity to experiment. Individuals can join us too for resources for hobbies and crafts like knitting, sewing, model-making etc.
- **Children** - by enabling them to fully use their imagination and develop their creative skills, using materials that don't cost the earth.
- **The Environment** - by **re-using** rather than recycling, which is more environmentally damaging.

