

# SLCN Marketplace event

**Monday 14<sup>th</sup> October 2019**  
**10.00am-12.30pm**

St Augustines Healthy Living Centre, Columbia Way, King's Lynn, Norfolk  
PE30 2LB

Following the review of provision for children with Speech, Language and Communication Needs in 2018, there will be a change to the referral process for Speech and Language Therapy, from 2<sup>nd</sup> September 2019. From this date referrals to East Coast Community Healthcare (ECCH) Children's Speech and Language Therapy will require all settings to be able to evidence a speech and language screen and one cycle of intervention prior to referral. To support settings to choose a recommended screening tool for their setting, and explore intervention tools, we will be hosting some marketplace events.

In response to requests, we are adding an additional Marketplace event in the West of the region. Representative from ECCH Speech and Language Therapy will be available to discuss and demonstrate the various screening and intervention tools we are recommending and to offer support to settings in implementing this. We will also be available to answer any questions about the changes to the referral process, as well as to offer information about training and other resources available.

Please feel free to drop-in during the morning.

We look forward to seeing you there!

# SLCN Marketplace event

**31<sup>st</sup> October 2019, 10am – 3.30pm**

Woodside Community Hub, Witard Road, Norwich, NR7 9XD.

Following the review of provision for children with Speech, Language and Communication Needs in 2018 there will be a change to the referral process for Speech and Language Therapy, from 2<sup>nd</sup> September 2019. From this date referrals to East Coast Community Healthcare Children's Speech and Language Therapy will require all settings to be able to evidence a speech and language screen and one cycle of intervention prior to referral. To support settings to choose a recommended screening tool for their setting, and explore intervention tools, we will be hosting these marketplace events.

This is an opportunity for all early years and school practitioners to **drop in any time** to meet representatives from SpeechLink, ICAN, WellComm and Teddy talk to find out more about their resources and help you to choose screening and intervention packages for your setting. There will also be an information talk from ECCH regarding the changes from September 2019 and pop-up talks from some exhibitors to explain and demonstrate their tools. These will take place in the morning and afternoon, starting at 10am and 1pm.

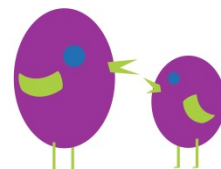
Representatives from ECCH speech and language therapy will be available to answer any questions about the changes to the referral process and to offer support to settings in implementing this, as well as to offer information about training and other resources available.

See our website for more information about ECCH referrals and the screening and intervention menu

**salt.ecch.org**

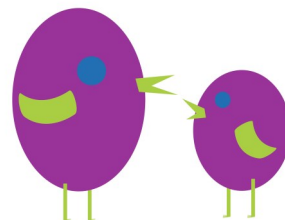
Please email [ecch.speakeast@nhs.net](mailto:ecch.speakeast@nhs.net) with any questions

We look forward to seeing you there!



# SLCN Survival Course

## KS3 & KS4



Date	Thursday 21st November 2019
Time	9.30-4.00
Location	The Nest, Holt Road, Horsford, NR10 3AQ
Course Fee	£10 (including lunch and refreshments)
Suitability	High School SENCOs, SEND support teachers and teaching assistants, Pastoral support officers
Booking Deadline	Monday 11th November

### Overview

This one-day course will be an opportunity to learn from Speech and Language Therapists about SLCN across key stages 3 and 4. You will explore ways to assess students in your setting as well as how to implement general strategies and targeted interventions.

There will also be presentations from ECCH's dysfluency specialist, ADHD Norfolk and Norfolk Dyslexia Outreach Service .

There will be time during the day to network with representatives from local charities and companies, to learn about how their services can support your staff and the young people you work with.

There will also be opportunities to explore the facilities at The Nest in Horsford, and meet their team.

Places limited, book now at [salt.ecch.org](http://salt.ecch.org)

# Speak east

Equipping you to support communication development

For more information  
contact us on

[Ecch.speakeast@nhs.net](mailto:Ecch.speakeast@nhs.net)

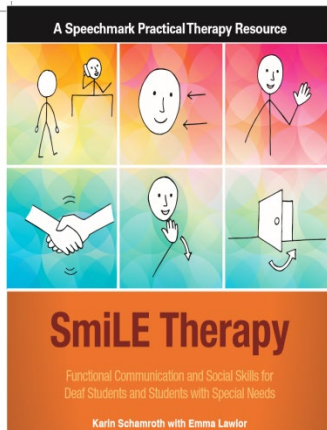




# smiLEtherapy™

strategies & measurable interaction in Live English

***An innovative therapy that prepares students with special needs with social skills & communication skills for life***



[info@smiletherapytraining.com](mailto:info@smiletherapytraining.com)

**contact us for training information**

[www.smiletherapytraining.com](http://www.smiletherapytraining.com)

Schamroth & Lawlor, *smiLE Therapy: Functional Communication & Social skills for deaf students and student with special needs*, Routledge Publishing, Oct 2015

★★★★★ **5 star rating in RCSLT Bulletin reviews**

- actively teaches social skills & functional communication skills to make students as independent as they can be, by teaching them to communicate in real situations without constant prompting
- Originally developed for deaf students, now extended and adapted for students with communication needs due to Learning Difficulties, Autism, Physical Disability, and Developmental Language Disorder
- For students: from the age of 7 to post-16, and adults. Loved by students, staff & parent/carers.
- Teaches effective communicate skills in everyday situations in school/college to transfer out. Builds social skills within the small learning group.
- Clear quantitative outcomes for every module focussed on the real needs of the individual student. Outcomes shared with students, parents/carers, management, heads, commissioners, OFSTED. Ideal for EHCPs (Education & Health Care Plans)
- Uses before & after therapy video, self-evaluation, highly guided role play techniques for visual and immediate learning
- Generalisation built into the therapy to ensure transfer of skills and maximum impact, with a staff workshop and parent/carer workshop an essential part of each module
- Evidence based practice using before/after therapy scores to provide clear quantitative outcomes

## **Research:**

- **Curtin M**, Training Parents in smiLE Therapy: What impact does it have on deaf children's abilities in maintaining and generalising their skills? MRes Research, City University: in Publication. Being presented at RCSLT Conference 2019
- **Medone G**, smiLE Therapy & students with ASD. Unpublished MA Research Project, Education & Autism, Birmingham University: May 2016
- **Schamroth K, Lawlor E**, smiLE Therapy: Functional Communication & Social skills for deaf students and student with special needs Speechmark Publishing, Oct 2015
- **Alton S, Herman R, Pring T**, 'Developing communication skills in deaf primary school pupils: Introducing and evaluating the smiLE approach' in Child Language Teaching & Therapy, Oct 2011 27: 255-26
- **Lawlor E**, Effectiveness of smiLE Therapy with secondary aged students. Unpublished MSc Research Project, City University: 2009
- **Schamroth K, Threadgill L**, 'Using a Live English curriculum' RCSLT Bulletin, Royal College of Speech and Language Therapists, Feb 2007

## What recent training course participants say:

- **smiLE Therapy training surpassed my expectations: Theory of Mind in practice & real structured functional communication & social skills.** Sofie P, Psychologist, Brussels
- **Excellent opportunity to see how to effectively teach social skills to students with Learning Disabilities.** Jennifer E, SLT, Specialist Unit, Further Education College, Bromley, Kent
- **I always leave courses with good intentions that don't always materialise. However this is so useable & meaningful to my setting that I will put the wheels in motion very quickly.** Tracey O, Specialist Teacher of the Deaf, Berkshire
- **Feels an absolute honour to be able to begin my career with knowledge of smiLE Therapy.** Mary P, SLT student UCL
- **Absolutely excellent! Inspirational! Fantastic practical ideas. I loved seeing the videos of smiLE Therapy in practice. I will definitely be putting this into practice!** Phyllis K. Teacher
- **I liked the 10 step process, real life, functional, clear impact, parental involvement and built-in generalisation. Extremely helpful!** Ben D, Deputy Head (MLD & Autism School), Torquay
- **Brilliant, thank you!** Charlotte C, Manager Childrens SLT Service, Torbay & S.Devon NHS
- **Fantastic, inspiring, functional. Really great course, lots of video making it understandable. Very applicable.** Hazel A, SLT (Special Schools), Birmingham
- **Very interactive from start to finish. An approach that would be easy to implement. Functional life skills.** Yasmin A, ALD Principal SLT, Bexley, Kent.
- **I loved the structure & outcome measures - really important in today's commissioning world. So really useful to be able to demonstrate this so easily.** Andrea A, SLT (ALD)
- **Excellent therapy that empowers students and gives great results for quantitative data & EHCPs.** Lisa M, Specialist Support (ASD), Peterborough
- **It's all about functional communication and children achieving really positive outcomes. Bridges the gap between education settings, family and the real world.** Naomi C, SLT (Special Needs), Torquay, Devon
- **Next year, there will be additional smiLE sessions embedded in the timetable.** Jane G, Deputy Headteacher, Doncaster Deaf Trust
- **Excellent, really valuable, so important for our students.** Diana W, Special Needs Teacher
- **I have learned a lot. Super useful for both our groups (Deaf & ASD). I had a lot of lightbulb moments through the whole day.** Charlotte J, SLT, Brussels
- **I liked the structured step by step breakdown of the communicative steps from knocking on the door & saying hello to leaving a tube station with the right information!** Jacqui.W, SLT, Exeter
- **We can use this with all ages of our students, all abilities, and with both deaf and hearing.** Lauren W, SLT (special needs), Doncaster
- **My lightbulb moment was seeing the confidence in pupils, even those with severe difficulties.** Lana C. Specialist Teacher, Doncaster
- **A really great way to help students use the speech & language skills they've learnt in real functional practical daily activities.** Helene, SLT (Deafness), Birmingham
- **Brilliant course to help teach life & communication skills to learners. Seeing the before & after videos & evaluating them was so valuable.** Emily S. Sensory Support Lead, Peterborough
- **At last a course that is actually so practical and real! Excellent!** Claire, W, SLT, Birmingham

Date	Friday 22nd November 2019
Time	TBC
Location	TBC
Course Fee	£110 (including lunch)
Suitability	Teachers, TAs, SENCos, Speech & Language Therapists, Occupational Therapists, Physiotherapists
Booking Deadline	Monday 11th November

## Overview

smiLE Therapy is a structured, specific therapy for students with special communication needs. It focuses on the 'live' face-to-face interaction between these students and people unfamiliar with their needs, in everyday life situations. smiLE Therapy was developed specifically for Deaf/hearing impaired students but is now suitable for children, young adults and students up to age 25 who have other communication needs due to Developmental Language Disorder, Learning Disabilities, Physical Disabilities and Austistic Spectrum Disorders.

This training, **provided by a member of the smiLE Therapy team**, will provide you with an introduction to smiLE Therapy and give you the basics to start delivering smiLE Therapy with your pupils. It focuses on the key principles, structure and methodology of this innovative therapy and introducethe 10 steps in every smiLE Therapy module.

## Learning outcomes

- Learn the ten steps of every smiLE Therapy module and understand the structure, key principles and methodology of this innovative therapy
- Learn how to implement key aspects of the therapy
- Provide you with the skills to deliver a therapy that effectively prepares pupils with social skills & communication skills for life



Speak east

For more information, or to book, contact us on

[Ecch.speakeast@nhs.net](mailto:Ecch.speakeast@nhs.net)

01493 808630

