



MUSIC SERVICE INFORMATION BOOKLET 2020/21

SUPPORTING MUSICAL JOURNEYS



Norfolk County Council

Educator
Solutions

Norfolk
Music HUB

Supported using public funding by



ARTS COUNCIL
ENGLAND



PROUD TO BE THE LEAD ORGANISATION OF



CONTENTS

| | |
|----------------------------------|---------|
| WHY USE THE MUSIC SERVICE? | PAGE 4 |
| INSTRUMENTAL TUITION | PAGE 7 |
| WHOLE CLASS ENSEMBLE TEACHING | PAGE 12 |
| CURRICULUM DELIVERY | PAGE 15 |
| NORFOLK MUSIC HUB & SUBSCRIPTION | PAGE 20 |

Norfolk Music Service strives to support every child throughout their musical journey with the highest quality music education and performance opportunities.

We have continued to develop our range of provision for 2020-2021 to support a broad and balanced curriculum in your school. As in the previous year, all primary & junior schools can access a fully funded term of whole class ensemble provision and a free in-school consultation to help you make the best of your musical opportunities.

We are extremely proud of our offer here in Norfolk and are pleased to be able to work together with many partner organisations to augment and support music in your school and across Norfolk as a whole.

We hope that you take a moment to browse our information booklet and are inspired by our add-on services alongside our programme of year-round events offering even more ways to become involved in music making in Norfolk.

Alison Bell

Head of Music Service



WHY USE THE MUSIC SERVICE?

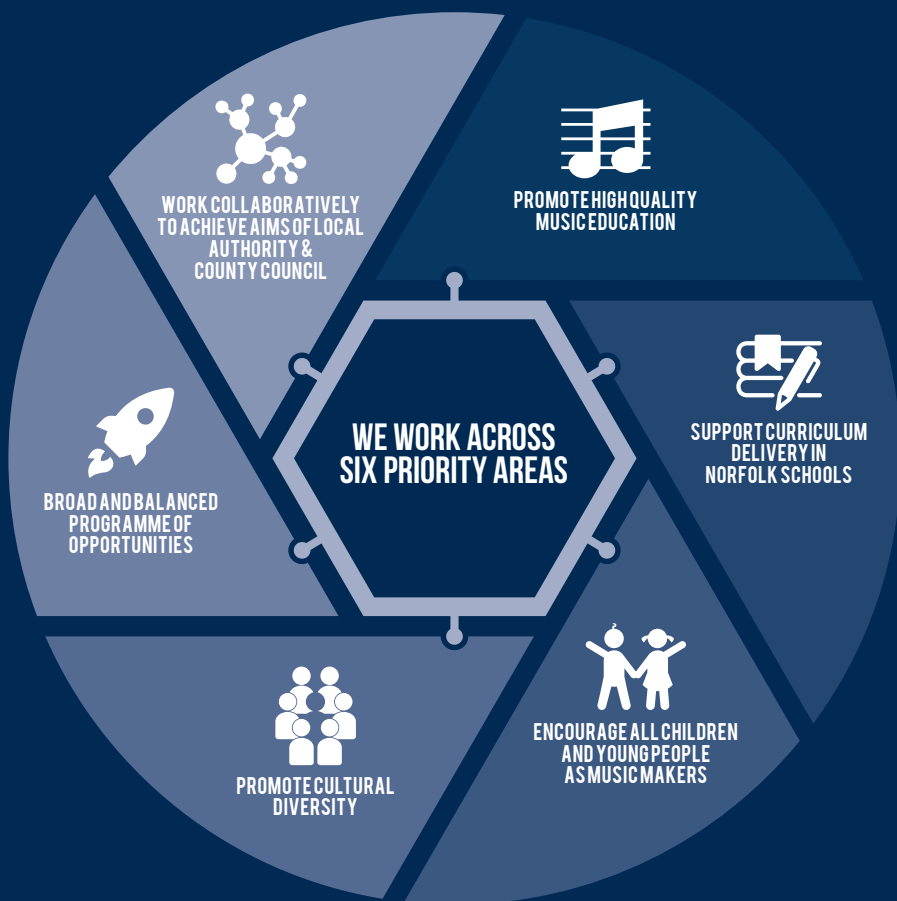
Norfolk Music Service operates to promote high quality music education across Norfolk schools both in the curriculum and through instrumental and vocal teaching.

We offer a range of services and products supporting schools to deliver high quality teaching and learning.



OVER 22,500 PUPILS
INVOLVED IN LARGE-SCALE
EVENTS LAST YEAR

THE MUSIC SERVICE AIMS





INSTRUMENTAL TUITION

The Music Service works in partnership with schools and educational settings to promote high quality music education through instrumental and vocal teaching.

Weekly lessons are tailored to meet the needs, aspirations and interests of all young people and can be provided on an individual, paired or group basis.

Charges:

| PER HOUR | |
|------------|-----|
| Individual | £36 |
| 2 pupils | £18 |
| 6 pupils | £6 |

| PER TERM (10 weeks) | |
|---------------------|------|
| Individual | £360 |
| 2 pupils | £180 |
| 6 pupils | £60 |

| PER 30 MINUTES | |
|----------------|-----|
| Individual | £18 |
| 2 pupils | £9 |
| 6 pupils | £3 |

| PER TERM (10 weeks) | |
|---------------------|------|
| Individual | £180 |
| 2 pupils | £90 |
| 6 pupils | £30 |



ALL INSTRUMENTS ARE PROVIDED FREE OF CHARGE IF YOU ARE ACCESSING TUITION THROUGH NORFOLK MUSIC SERVICE

There is a fee remissions policy in place for Instrumental Tuition:

- ▶ **50%** reduction in fees for pupils in receipt of Free School Meals
- ▶ **100%** reduction in fees for Looked After Children
- ▶ **50%** reduction in fees in the first year of learning for those pupils who have accessed a Whole Class Ensemble Teaching (WCET) programme in the previous Academic Year.

Please note that if demand exceeds budget, applicants will be awarded support on a first-come-first-served basis.

DIGITAL LEARNING

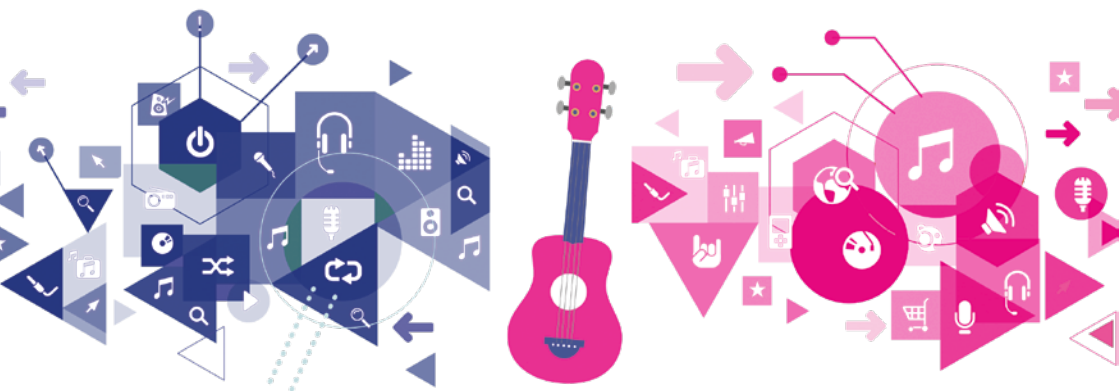
The Music Service has been selected to join Connect: Resound, a pioneering digital music education project which enables children to have online music lessons, in real time, with a teacher from the Music Service.

Tuition is provided for individuals or small groups, subject to availability of teacher, equipment and broadband speed. Your school will need:

- ▶ A broadband connection speed of at least 1 Mbps (both upstream and downstream). A wired internet connection is preferable to wireless.
- ▶ A regular teaching space where there is little background noise
- ▶ A computer capable of running video streaming software with an internal or separate webcam enabled
- ▶ A set of speakers to enhance the music learning experience
- ▶ A school-based email address
- ▶ A music stand and chair
- ▶ A member of school staff who can supervise pupils periodically during online lessons

Connect: Resound is led by youth music charity NYMAZ in partnership with technology company UCan Play. For further information about Connect: Resound please visit: connectresound.org.uk

Charges: £36 per hour



IN-SCHOOL ENSEMBLES & AFTER SCHOOL CLUBS

The Music Service can provide a flexible solution to in-school ensemble provision including after school clubs where required.

Tuition can take place anytime during the extended school day and is offered on a wide range of instruments from steel pans to full scale opera projects, just ask!

Charges: £40 per hour



ENSEMBLES

Ensembles are an important part of learning to play a musical instrument and are often the most enjoyable and socially rewarding part of the process. There are many Ensembles & Music Centres led by the Music Service across the County where young people can take part in group music making and additional lessons.

The Music Service works towards providing a musical pathway for all its young players for every stage of learning, and currently offers the following ensembles:

- ▶ Norwich Young Voices
- ▶ Aylsham Cluster Ensemble
- ▶ Holt Training Strings
- ▶ Norwich String Ensemble
- ▶ Norfolk County Strings
- ▶ Norfolk Schools' Training Wind Band
- ▶ Norfolk Schools' Wind Band
- ▶ Norfolk County Symphonic Wind Band
- ▶ Norfolk Students' Training Jazz Band
- ▶ Norfolk Students' Jazz Orchestra

Information about each Ensemble, including grade level, rehearsal venue, and rehearsal times can be found online or in the Ensembles Information Handbook.

Charges:

| | |
|-----------------------|----------------------|
| INDIVIDUAL MEMBERSHIP | £55 /per term |
| FAMILY MEMBERSHIP | £80 /per term |

Pupils in receipt of Free School Meals are entitled to a 50% discount on fees, while all Looked After Children can attend Ensembles free of charge.



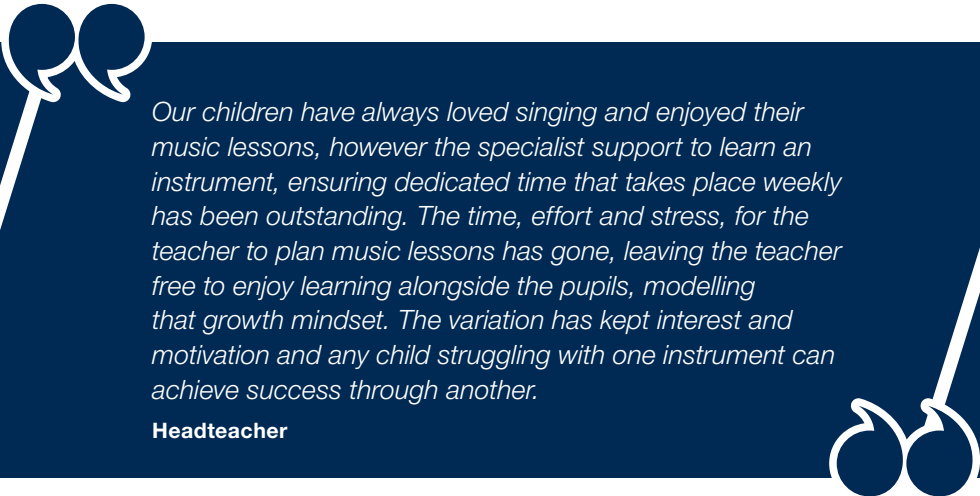
WHOLE CLASS ENSEMBLE TEACHING

A core requirement of the National Plan for Music Education is that every child should have the opportunity to learn a musical instrument through Whole Class Ensemble Teaching (WCET).

WCET projects are led by high-quality music teachers who will develop musical skills that can be applied in National Curriculum music lessons. For some this may be the start of a life-long hobby or, indeed, the first step on a rewarding career path.

The Music Service offers 1 full term of WCET for **Year 4s** in every primary & junior school free of charge for schools signed up to a Hub Subscription Package 2020/21 (see page 22).

Charges: Free of charge

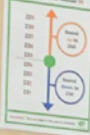


Our children have always loved singing and enjoyed their music lessons, however the specialist support to learn an instrument, ensuring dedicated time that takes place weekly has been outstanding. The time, effort and stress, for the teacher to plan music lessons has gone, leaving the teacher free to enjoy learning alongside the pupils, modelling that growth mindset. The variation has kept interest and motivation and any child struggling with one instrument can achieve success through another.

Headteacher



50
60
70
80
90



Factors
Numbers that divide another number exactly are called its factors.
Example: 12 has factors 1, 2, 3, 4, 6, and 12.

Fractions
Fractions represent numbers and parts of a whole.
Example: $\frac{1}{2}$ is a half, $\frac{1}{10}$ is a tenth.

Place Value
The value of a digit in a number depends on its position.
Example: In 100, the 1 is in the hundreds place.

100
1 000
10 000
100 000

Adone



LEARN TO PLAY | START TO SING | PERFORM TO THE WORLD

Maracas
& shakers


Woodb

CURRICULUM DELIVERY

With the increased pressures that schools are under, why not let the Music Service take care of your curriculum music provision or better still, utilise our experienced and qualified music teachers to provide PPA as an affordable cover solution?

The Music Service can provide a bespoke support package aligned to your school's needs providing a programme of weekly support to enhance your curriculum.

Charges: £40 per hour



[Music Service Teacher] has been an inspiration to staff and pupils alike - utterly transforming the quality of provision and we have loved having their incredible expertise with us. They are amazing; linking all their teaching to our curriculum and needs in a faultless way. Completely priceless.

Classroom teacher




MUSICIAN IN RESIDENCE

Raise the profile of music in your school by inviting one of our highly qualified Music Service staff to become a valued member of your school for a whole day. Enjoy the flexibility of being able to offer a wide range of musical experiences for your pupils while engaging in a creative curriculum.

We provide a Musician in Residence programme in primary and complex needs settings. A typical one-day Musician in Residence Programme can deliver a combination of the following:

- ▶ PPA Provision
- ▶ National Curriculum music delivery
- ▶ Instrumental Tuition (individual, small group or whole class)
- ▶ Whole school singing assemblies
- ▶ In-school ensembles (both instrumental and choral)
- ▶ After-school clubs
- ▶ Support for concerts and performances

Charges: £200 per day



I wanted to let you know how pleased I am that you were able to facilitate the continuity of music tuition at our school. We are very lucky. To think two years ago there was hardly any lessons going on at all!

Classroom teacher



CONSULTANCY SUPPORT

The Music Service can offer a bespoke consultancy package for schools to reinvigorate your music curriculum, advise on extra-curricular activities, undertake an audit of music provision or completely overhaul the musical offer in your school.

- ▶ 1:1 bespoke advisory support for your school
- ▶ Full music curriculum audit
- ▶ Support in writing and implementing a School Music Education Plan
- ▶ Analysis of training needs and implementation of a CPD package for staff
- ▶ Support with resources
- ▶ Advice in setting up Instrumental progression routes for your school
- ▶ Tools to set-up relevant Ensemble provision
- ▶ Whole staff training days in schools

Charges: £300 per day



CONTINUING PROFESSIONAL DEVELOPMENT

Norfolk Music Hub provides continuing professional development for all educational settings, teachers and music educators.


CPD events include various networking and specific training events, both in localities and Countywide.

Previous events have included Introduction to Charanga Musical School & Advanced Training, KS1 & KS2 Music Curriculum, Introduction to Beatboxing, Taiko Drumming, Conducting and leading a choir.

All CPD events and workshops are available free of charge to all schools signed up to any Hub Subscription Package, including schools who receive Whole Class Ensemble Teaching for 2020/21, or £75 per session, unless otherwise stated.

Charges: Free of charge to Hub Subscribers

£75 per session for non-Hub Subscribers



*Thank you so much for a fantastic day!
We're very lucky to have such a great
Music Hub and to have all of these free
CPD opportunities.*

Teacher



Norfolk Music HUB



WHAT IS NORFOLK MUSIC HUB?

Norfolk Music Hub is a partnership of organisations and schools which engage with Norfolk's children and young people in music making.

These organisations share what they do, communicate with each other and are committed to the highest quality of music education for children and young people.

Norfolk Music Hub is funded by the Department of Education, and our grant is administered by Arts Council England, to create more opportunities for children and young people to get involved in music.

We are advised by an Executive Board that meets each term.

Follow us for information on opportunities for young musicians from a further network of other Music Hubs and organisations.

FIND US ONLINE



CORE & EXTENSION ROLES

The National Plan for Music Education outlines core and extension roles that all Hubs are required to deliver as a condition of their funding from Department for Education which is administered through Arts Council England. These roles set a benchmark for good practice for a well-rounded service within Music Education Hubs.

CORE ROLES

- ▶ Ensure that every child aged 5 to 18 has the opportunity to learn a musical instrument (other than voice) through whole class ensemble teaching programmes for ideally a year (but for a minimum of a term) of weekly tuition on the same instrument.
- ▶ Provide opportunities to play in ensembles and to perform from an early stage.
- ▶ Ensure that clear progression routes are available and affordable to all young people.
- ▶ Develop a singing strategy to ensure that every pupil is singing regularly and that choirs and other vocal ensembles are available in the area.

EXTENSION ROLES

- ▶ Offer Continuing Professional Development (CPD) to school staff, particularly in supporting schools to deliver music in the curriculum.
- ▶ Provide an instrument loan service, with discounts or free provision for those on low incomes.
- ▶ Provide access to large-scale and/or high-quality music experiences for pupils, working with professional musicians and/or venues. This may include undertaking work to publicise the opportunities available to schools, parents/carers and students.

HUB SUBSCRIPTION PACKAGES

Our Subscription Packages offer all schools a wide-range of services to enhance and support your music curriculum. All of our Subscription Packages for 2020-21 are available free of charge to participating schools subject to attendance at two CPD events across the year and submission of Annual Data Return.

Register for a Subscription Package by 26 June 2020.

INFANT

- ▶ Free access to Charanga Online Curriculum
- ▶ Free access to Sing Up
- ▶ Access to the Norfolk Music Hub newsletter
- ▶ Access to the Norfolk Music Hub Awards
- ▶ Access to curriculum support meetings in localities
- ▶ Access to Bespoke Project Grants from Norfolk Music Hub
- ▶ Music Mark membership
- ▶ Dedicated account manager
- ▶ Free access to Music Library resources
- ▶ Access to Norfolk Music Hub CPD sessions.



COMPLEX NEEDS

- ▶ Free access to Charanga resources for young people with disabilities
- ▶ Free access to Restricted Complex Needs Fund
- ▶ Access to the Norfolk Music Hub newsletter
- ▶ Access to the Norfolk Music Hub Awards
- ▶ Access to bespoke curriculum networking opportunities
- ▶ Music Mark membership
- ▶ Dedicated account manager
- ▶ Free access to Music Library resources
- ▶ Access to Norfolk Music Hub CPD sessions.





FREE



PRIMARY & JUNIOR

- ▶ Free term of Whole Class Ensemble Teaching for Year 4
- ▶ Free access to Charanga Online Curriculum
- ▶ Free access to support for a whole school singing strategy
- ▶ Access to the Norfolk Music Hub newsletter
- ▶ Access to the Norfolk Music Hub Awards
- ▶ Access to curriculum support meetings in localities
- ▶ Access to Bespoke Project Grants from Norfolk Music Hub
- ▶ Music Mark membership
- ▶ Dedicated account manager
- ▶ Free access to Music Library resources
- ▶ Access to Norfolk Music Hub CPD sessions.

SECONDARY

- ▶ Access to the Norfolk Music Hub newsletter
- ▶ Access to the Norfolk Music Hub Awards
- ▶ Access to curriculum support meetings in localities
- ▶ Annual 1:1 meeting with Head of Department
- ▶ Access to Restricted Secondary Fund
- ▶ Music Mark membership
- ▶ Dedicated account manager
- ▶ Free access to Music Library resources
- ▶ Access to Norfolk Music Hub CPD sessions.





**FOR FURTHER DETAILS ON
ANYTHING COVERED IN THIS
BOOKLET PLEASE VISIT
NORFOLKMUSICHUB.ORG.UK**

Or contact us:

musicservice@educatorsolutions.org.uk

01603 303351