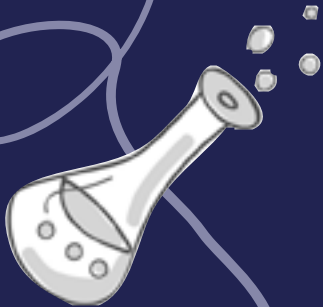


NORWICH
CATHEDRAL



A Window of Discovery for All Ages



Schools & Family Learning at Norwich Cathedral

Themed Guided Visit Programmes for Nurseries,
Primary Schools, Academies, Community Groups and Parishes

KS1 | KS2

Welcome

We look forward to welcoming you to the Cathedral very soon...

We are delighted to have a vibrant Schools & Family Learning department at Norwich Cathedral, welcoming Primary and Secondary School visits for a variety of learning opportunities.

Working from the Bowerbank Room, a modern fit-for-purpose space in The Hostry Visitor & Education Centre, our team of educators see thousands of young people every year.

What other teachers have said...

“

“Our children were riveted by ‘Cathedral Revealed’. What impressed me was the way you gave time to allow our children to sit and absorb feeling the atmosphere.”

“Would recommend your science with R.E. to all, children really enjoyed it and could view the Cathedral in a different light. There aren’t many opportunities for science and art elsewhere.”

“The children really enjoyed meeting Edith Cavell. I found the booking process to be very efficient. The classroom was a great base and the leaders were brilliant. Definitely value for money.”

”





School visits

Norwich Cathedral is a popular destination for schools when choosing their educational visits for the year. Our team of teachers and guides bring alive the wonderful history of Norwich Cathedral as an ancient sacred space and its story of faith as well as working with you and your learning objectives to get the most out of your visit for your pupils.

When you book a guided visit programme at the Cathedral we will ask you what your learning outcomes are.

Many of our programmes are cross-curricular, so you will be able to tick lots of boxes! We cover: RE, History, English, Art, Dance/Drama, Science and SMSC.

Book in advance

All visits must be pre-booked in advance.

- Call or email us to ask about availability, prices and to set a date. All our programmes incur a small fee per pupil.
- Once a date has been set you will be sent a booking form.
- You will be sent confirmation and information about where to come on the day, including Risk Assessment advice to help you compile your own risk assessment.
- A timetable, content outline and information about your visit will be sent to you.
- An invoice will be raised and sent to you.

Contact

For more information about Norwich Cathedral's work with schools, including the resources we can offer to teachers, please contact our Head of Schools & Family Learning.

Email headofschools@cathedral.org.uk

or telephone **01603 218316**.

For information about what's coming up over the next few months, you may also like to look at the latest newsletter on our website: cathedral.org.uk

What's on offer?

A variety of cross-curricular programmes which can be adapted for timings and ages **KS1 | KS2**

Cathedral Revealed

This programme forms the basis for many of our visits but can also be booked as a one hour tour.

A journey of learning and exploration around the Cathedral that offers an overview of our Norman history, discovery about arches and the building of the Cathedral.

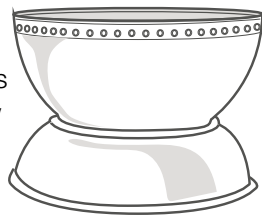
Children will also find out about our religious roots through our Benedictine, monastic tradition.

As well as looking at how Christians worship today and how furnishings, objects (e.g. font, altar, pulpit) and art are used for prayer and worship today.

Discover Worship and Belief

Lots of activities around the Cathedral to enable enquiry and learning about special areas, objects and furnishings. Find out about how Christians pray and worship here today using music, art and liturgy (and more!) just as the medieval monks did.

ADD ON: look at key Bible stories, Trinity, Baptism and belonging, Eucharist.



Meet Matron Edith Cavell



Meet WWI nurse Edith Cavell and take a journey with her around the Cathedral as she shares her story. Visit her grave outside the Cathedral and learn more about her life and what inspired her.

ADD ON: a craft activity as a way of remembering Edith and key aspects of her story and character.

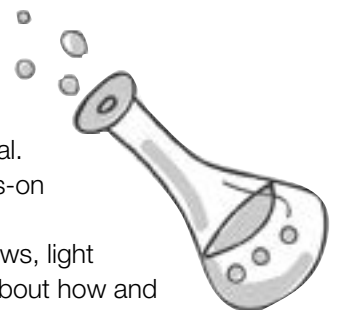
Can also include comparison with the life of Florence Nightingale and/or Mary Seacole.



Sacred Science

Explore forces, friction, materials and their properties, sound and light in the Cathedral.

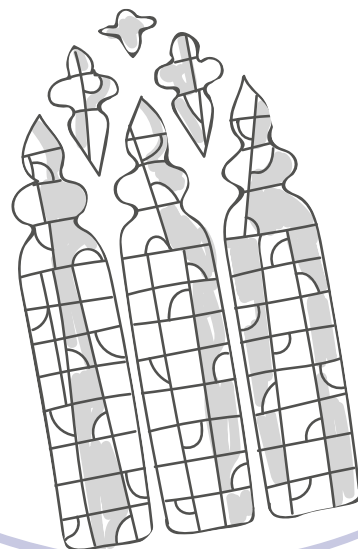
Lots of experiments and hands-on activities as you encounter the space using arches, windows, light and music. Includes learning about how and why the Cathedral was built and aspects of Christian worship.

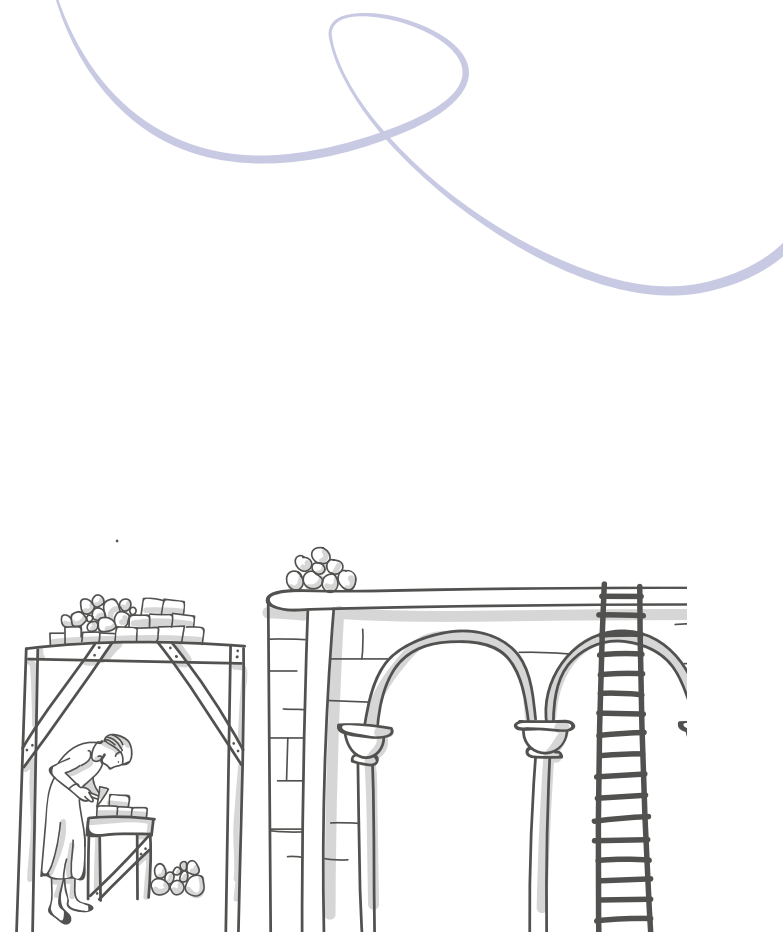


Through the Window

A visit combining art, science and RE. Investigate light, colour, symbols and patterns. Discover how Bible stories and the Cathedral's story are revealed through stained-glass windows, mosaics, paintings, icons and more.

ADD ON: making your own stained-glass window or mosaic (extra charges apply for mosaic workshops).





Be a Monk

Spend a day living as a Benedictine monk. Find out how they lived, worked, studied, prayed and worshipped here at Norwich Cathedral until 1538. Explore special places such as the library and the herb garden which contributed to the way of life for the monks. Have a go at illuminating letters and singing in the choir stalls.

ADD ON: consider the Benedictine monastic life of the Cathedral and its ethos. Then consider your own school ethos and spirituality and how the Benedictine way of life could be used to influence and shape that. Suitable for teachers and/or pupils, e.g. school council to form a vision for Christian distinctiveness in school life.



Here Come the Normans

Take a journey back in time to 1096 when the Cathedral was built. Handle medieval mason's tools, build an arch and chip away at some stone. Find out about how the Normans changed Norwich and investigate what life was like then. Learn about how important faith and religion were in people's lives and how the monks established their community here.

Pilgrimage Experience

Be a pilgrim in this amazing place by making a pilgrimage journey around the Cathedral with a medieval pilgrim leader. Explore what special places are all about for Christians and investigate places of pilgrimage around the world and for other world faiths.

Fantastic Festivals

Throughout the year, come and celebrate key Christian festivals at the Cathedral.

November/December

– Christmas Journey trail

March/April

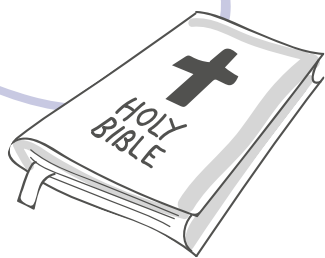
– Easter Journey trail
Other times of the year explore Pentecost, Harvest or other Christian celebrations you would like to include.

A visit filled with stories and activities.



The Bible's Big Story

Bring Bible stories alive for your children and find out about how Christians use and learn from the Bible in their worship. Includes looking at the amazing Cathedral roof bosses which tell the whole story of the Bible from beginning to end along the ceiling of the Nave.



Mosque/Synagogue and Cathedral

Compare and contrast two places of worship across two world faiths and explore similarities and differences. Either spend time in the Cathedral, visit the East Anglian Bangladeshi Mosque on Rose Lane for one hour with a talk and question time with one of our Muslim partners then follow up with activities and time for reflection in the Cathedral (more suitable for KS2 pupils). Or spend a morning at the Norwich Synagogue on Earlham Road then come to the Cathedral for the afternoon for an exploration of a Christian Sacred Space – followed by reflection on the two places of worship.

Julian of Norwich

As part of a new partnership with the Julian Shrine on Rouen Road, we can offer a combined visit to two sacred sites. Make a mini pilgrimage across the city to the Julian Shrine and learn about Julian's life, her contribution to religion and literacy in England and across the world. Reflection and activities on site there and back at the Cathedral to explore her important story and her place in the history of Norwich.



Wellbeing and enrichment days

Reflective opportunities using our labyrinth, special 'behind the scenes' opportunity to visit our historic library/music department/organ and other special areas of the Cathedral. Spend time in reflection and activity in the building and responding through art, music, dance or literacy.

These days are also available for teachers and staff.



EYFS

Super, sacred, sensory trail

A half-day guided exploration of the Cathedral using the five senses. Children will discover elements of Christian worship as well as the building itself – touch the stone, hear the sounds and experience the sights, smells and tastes of this amazing space.

ADD ON: expand to a full day by adding Bible story time in the Cathedral (see *The Bible's Big Story*).

SEND

We recognise that while all our programmes are adaptable for different ages and learning stages, we want to cater well for groups with specific needs.

Talk to us about visiting with a group of SEND children and we will work with you to plan a programme with timing and content suited to your needs.



Other useful information when planning a visit

Timings and prices

Our full day visits are normally 10am-2pm and are at a cost of £4.50 per pupil.

Half day visits are either 10am-12noon or 12noon-2pm at a cost of £3.90 per pupil.

Lunches

You may wish to eat your packed lunches here.

You can picnic in the cloisters (outside but under cover) or in our classroom if the weather is bad.

Gift bags

You can pre-order souvenir gift bags that contain quality, but budget-priced items. Ask us about these.

Lavatories

There are some on site but please be aware that they are open to the public so staff should accompany pupils at all times.

Self-guiding

Even if you just want to use the toilets and grounds you do need to book and there is a charge.

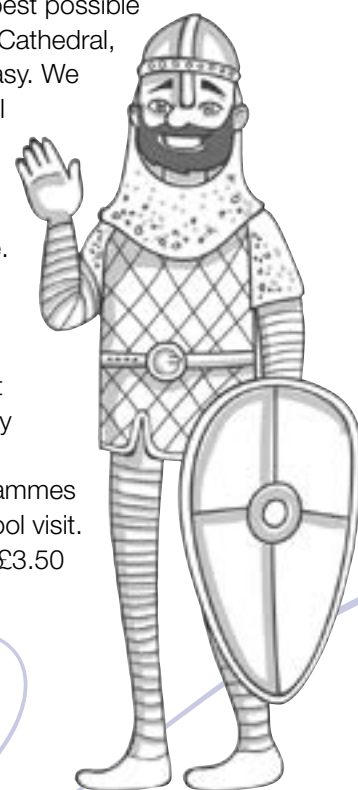
Please contact us for availability and information.

Visiting schools in the community

While we recognise that the best possible experience is to come to the Cathedral, we know this is not always easy. We therefore offer many in-school options for members of our team to come out to your school and deliver an educational programme there. From meeting Edith Cavell to experiencing the Christmas story; from arch-building and Norman history to a specialist RE day – we can tailor the day specifically to your needs.

Ask us about adapting programmes in this brochure for an in-school visit.

Prices for in-school visits are £3.50 per pupil plus mileage.





For more information

To discover more about events and activities for children, families and schools at Norwich Cathedral, visit our website: cathedral.org.uk
The Chapter Office, 65 The Close,
Norwich NR1 4DH

T: 01603 218316 **W: cathedral.org.uk**
E: headofschools@cathedral.org.uk

 [@Nrw_Cathedral](https://twitter.com/Nrw_Cathedral)

Graphic design and illustration by
ninabrowndesign.co.uk
and Annette Hudson.
Photography by Bill Smith.

**NORWICH**
CATHEDRAL