

Demographic Information Note 4/02

The 2001 Census – more findings from the first results

The first results of the 2001 Census, at local authority level, were laid before Parliament and simultaneously published on 30 September. Demographic Information Note 3/02 included the headline population totals for Norfolk and the County Districts, and comparisons with the mid-year estimates of population, including the recently published estimates for mid-2001. This report gives more detail from the first results, covering

- age structure;
- sex ratios;
- response rates and implications of the results.

This report also has an outline of our plans for Census dissemination and analysis in 2003.

All the Census results, explanations and commentary can be accessed by following this link to the Census home page on the National Statistics web site:

<http://www.statistics.gov.uk/census2001/>

Age structure

The main findings of the Census in relation to age structure of the United Kingdom are:

- There are fewer men than women at all ages over 21
- for the first time, people aged 60 and over (21 per cent) form a larger part of the population than children under 16 (20 per cent).
- there has been a big increase in the number of people aged 85 and over (now 1.9 per cent of the population).

Table 1: 2001 Census age structure of Norfolk and County Districts
(numbers of persons and percentages)

| age group | Norfolk | % | Breckland | % | Broadland | % | Great Yarmouth | % | King's Lynn and West Norfolk | % | North Norfolk | % | Norwich | % | South Norfolk | % |
|-----------|---------|-----|-----------|-----|-----------|-----|----------------|-----|------------------------------|-----|---------------|-----|---------|-----|---------------|-----|
| 0-4 | 41,289 | 5.2 | 6,838 | 5.6 | 6,167 | 5.2 | 4,823 | 5.3 | 6,919 | 5.1 | 4,315 | 4.4 | 6,372 | 5.2 | 5,855 | 5.3 |
| 5-9 | 45,822 | 5.8 | 7,446 | 6.1 | 6,930 | 5.8 | 5,479 | 6.0 | 7,846 | 5.8 | 5,034 | 5.1 | 6,599 | 5.4 | 6,488 | 5.9 |
| 10-14 | 47,989 | 6.0 | 7,760 | 6.4 | 7,012 | 5.9 | 5,855 | 6.4 | 8,147 | 6.0 | 5,456 | 5.5 | 6,824 | 5.6 | 6,935 | 6.3 |
| 15-19 | 45,426 | 5.7 | 6,716 | 5.5 | 6,320 | 5.3 | 5,368 | 5.9 | 7,396 | 5.5 | 5,211 | 5.3 | 8,129 | 6.7 | 6,286 | 5.7 |
| 20-24 | 41,028 | 5.1 | 5,766 | 4.7 | 4,780 | 4.0 | 4,369 | 4.8 | 5,996 | 4.4 | 3,831 | 3.9 | 12,053 | 9.9 | 4,233 | 3.8 |
| 25-29 | 45,145 | 5.7 | 6,943 | 5.7 | 6,204 | 5.2 | 4,980 | 5.5 | 7,125 | 5.3 | 4,205 | 4.3 | 10,279 | 8.5 | 5,409 | 4.9 |
| 30-34 | 53,309 | 6.7 | 8,112 | 6.7 | 8,455 | 7.1 | 5,983 | 6.6 | 8,726 | 6.4 | 5,315 | 5.4 | 9,659 | 7.9 | 7,059 | 6.4 |
| 35-39 | 56,573 | 7.1 | 8,828 | 7.3 | 9,112 | 7.7 | 6,329 | 7.0 | 9,611 | 7.1 | 6,051 | 6.1 | 8,646 | 7.1 | 7,996 | 7.2 |
| 40-44 | 52,453 | 6.6 | 7,896 | 6.5 | 8,401 | 7.1 | 5,875 | 6.5 | 8,925 | 6.6 | 6,167 | 6.3 | 7,267 | 6.0 | 7,922 | 7.2 |
| 45-49 | 50,805 | 6.4 | 7,886 | 6.5 | 7,913 | 6.7 | 5,774 | 6.4 | 8,477 | 6.3 | 6,006 | 6.1 | 7,167 | 5.9 | 7,582 | 6.8 |
| 50-54 | 59,632 | 7.5 | 9,069 | 7.5 | 9,406 | 7.9 | 6,881 | 7.6 | 10,054 | 7.4 | 7,803 | 7.9 | 7,284 | 6.0 | 9,135 | 8.3 |
| 55-59 | 51,988 | 6.5 | 7,916 | 6.5 | 7,941 | 6.7 | 6,070 | 6.7 | 9,017 | 6.7 | 7,394 | 7.5 | 5,746 | 4.7 | 7,904 | 7.1 |
| 60-64 | 45,663 | 5.7 | 6,986 | 5.8 | 7,015 | 5.9 | 5,187 | 5.7 | 8,241 | 6.1 | 6,595 | 6.7 | 5,093 | 4.2 | 6,546 | 5.9 |
| 65-69 | 42,986 | 5.4 | 6,389 | 5.3 | 6,380 | 5.4 | 4,754 | 5.2 | 7,931 | 5.9 | 6,741 | 6.9 | 4,884 | 4.0 | 5,907 | 5.3 |
| 70-74 | 39,857 | 5.0 | 5,704 | 4.7 | 5,770 | 4.9 | 4,449 | 4.9 | 7,445 | 5.5 | 6,252 | 6.4 | 4,949 | 4.1 | 5,288 | 4.8 |
| 75-79 | 33,907 | 4.3 | 4,947 | 4.1 | 4,602 | 3.9 | 3,752 | 4.1 | 6,229 | 4.6 | 5,192 | 5.3 | 4,645 | 3.8 | 4,540 | 4.1 |
| 80-84 | 22,882 | 2.9 | 3,349 | 2.8 | 3,199 | 2.7 | 2,657 | 2.9 | 3,927 | 2.9 | 3,546 | 3.6 | 3,206 | 2.6 | 2,998 | 2.7 |
| 85-89 | 13,280 | 1.7 | 1,903 | 1.6 | 1,880 | 1.6 | 1,506 | 1.7 | 2,235 | 1.7 | 2,209 | 2.2 | 1,791 | 1.5 | 1,756 | 1.6 |
| 90-plus | 6,699 | 0.8 | 968 | 0.8 | 1,010 | 0.9 | 722 | 0.8 | 1,094 | 0.8 | 1,076 | 1.1 | 960 | 0.8 | 869 | 0.8 |
| All ages | 796,733 | 100 | 121,422 | 100 | 118,497 | 100 | 90,813 | 100 | 135,341 | 100 | 98,399 | 100 | 121,553 | 100 | 110,708 | |

source: Office for National Statistics © Crown Copyright 2002

To what extent is the national picture repeated in Norfolk?

Table 1 is a reference table to show the numbers and proportions of people in five-year age groups. The percentage aged 60 and over is over 25 per cent, above the national proportion, though the proportion aged under 15 (under 16 is not yet available for local authorities) is only 17 per cent, much lower than nationally. The proportion of people aged 85-plus is 2.5 per cent, above the national figure of 1.9 per cent. At District level the biggest variation occurs in North Norfolk, with 32 per cent aged 60-plus and only 15 per cent aged under 15.

North Norfolk and Norwich have the biggest variations from the County average age distribution. North Norfolk's age structure has a relatively high proportion of older people – all the age groups from 55-59 and over are higher proportions than the County and all 35-39 and under (except one) are lower proportions than the County. On the other hand Norwich has relatively low proportions of people aged 40-89 and very high proportions aged 20-34 (partly due to the enumeration of students at their term-time address).

Interestingly, Breckland has a relatively high proportion of children aged 0-14, and South Norfolk a relatively high proportion of people aged 40-54, in comparison with the County average.

These figures confirm that the official Mid Year Estimates have been broadly accurate over the last few years in terms of getting the age structure of Norfolk right. The increase in older people in number and as a proportion of the population has been indicated by the Estimates. **Figure 1** confirms that in all age groups under age 45 Norfolk has lower proportions of people than nationally, and in all age groups of 45 and over it has higher proportions.

Sex ratios

Figure 2 shows that Norfolk appears to be broadly in line with the national finding on the excess of females at all ages over 21 (again, we do not yet have the figures to make comparisons for this precise age range). From 25-29 and above females exceed or equal males in all age groups, not just those 50-54 and over where higher male death rates largely account for the difference. The chart also illustrates the effect of the post-WW2 baby boom (people currently aged 50-54 and 55-59) and the low birth years of the mid to late-1970s (people now aged 20-24 and 25-29).

Fig 1: Norfolk age composition compared with England & Wales, 2001 Census

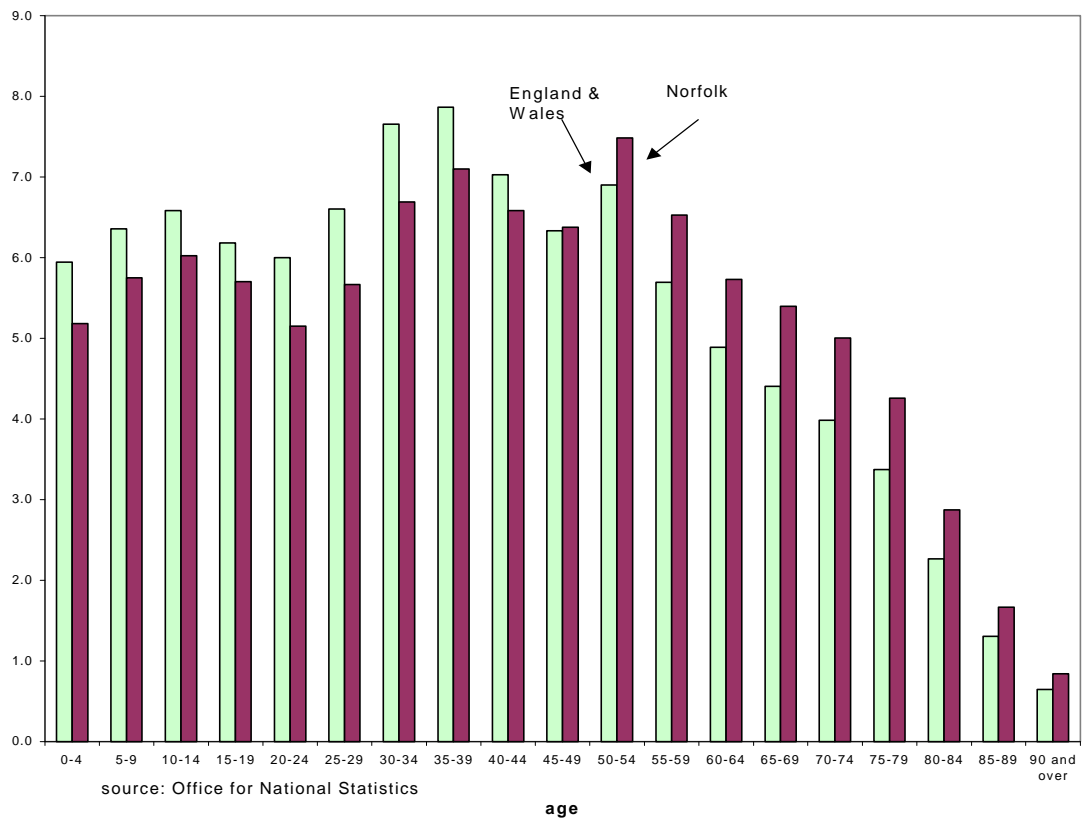
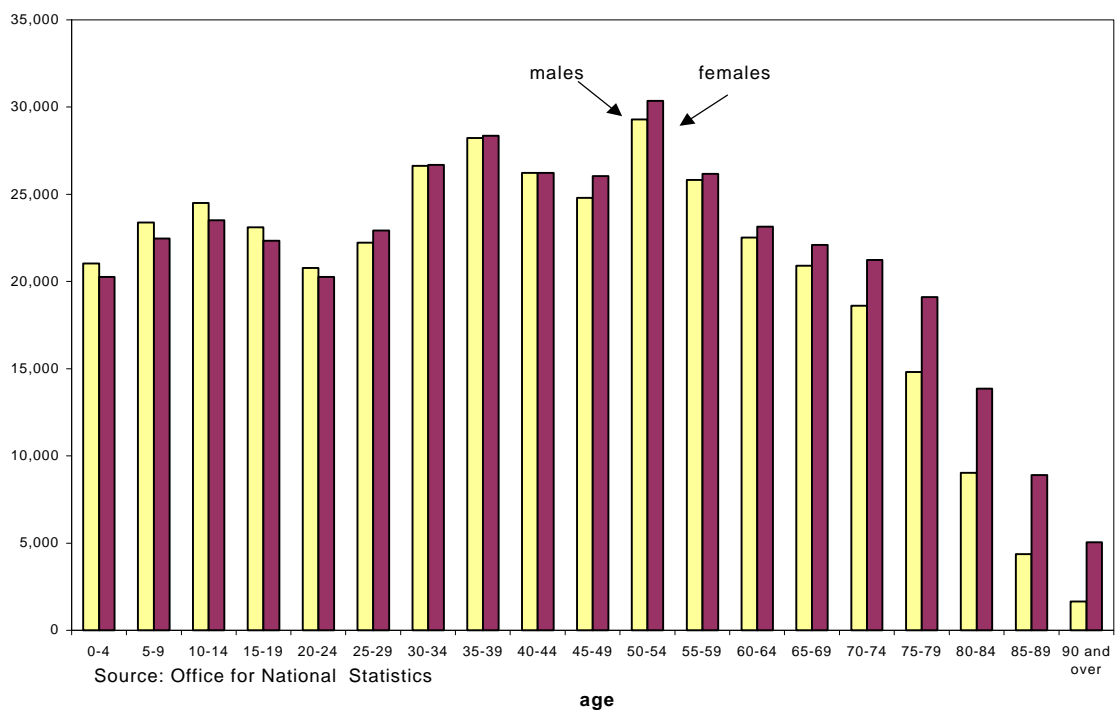


Fig 2: Norfolk age composition by sex, 2001 Census



Response rates

The 1991 Census results represent 100 per cent of the population and consist of:

- People included on returned Census forms (94%)
- Other people in identified households (4%)
- People not included on returned forms and people in wholly missed households (2%).

The 'one number' census combined the results of the Census enumeration itself, an independent re-enumeration of a large sample of households (the Census Coverage Survey) and statistical methods to adjust for people likely to have been missed completely.

Under-enumeration in the Census did not occur uniformly across all areas or across all age and sex groups. In general the response rates were lowest for people in their twenties, particularly men, and for inner-city areas with characteristics (such as multi-occupancy and language difficulty) known to be related to the Census non-response.

Norfolk achieved some of the highest response rates in the country, in that South Norfolk and Broadland were among the ten local authorities with the highest response rates. Each local authority's response rates by sex and age group have been published by ONS. In general Norfolk's response rates are similar to the Regional average, but for individual Districts other than South Norfolk and Broadland the rates are relatively low compared with other Districts in the Region. For most local authorities response rates were significantly higher for people aged 45 and over than those aged under 45.

Implications of the results

In England and Wales the Census shows that the population is around 0.9m less than estimated by the mid-year estimates. The difference is made up almost entirely of young men, confirming the pattern found in the 1991 Census but discounted at the time. It is estimated that the national mid-year estimates were too high by around 0.3m people. Revisions of national population estimates will be made back to 1982 to allow for the new benchmark results from the Census. The main reason for inaccuracies in the mid-year estimates is the difficulty of estimating migration, which has to be based on survey data. In particular, surveys may not be capturing the full extent of emigration.

Revised population estimates at local authority level for mid-1991 to mid-2000 will be published by ONS in February 2003, and for mid-1982 to mid-1990 in March.

The sex ratio of men to women found nationally is widely replicated across the country: three quarters of local authority districts have more women than men in the age range 20-39. In Norfolk this is true of all Districts except Breckland and Norwich.

Our dissemination and analysis plans

We intend to provide Norfolk County Council corporate users with access to Census data, in particular for service planning areas, through a product entitled 'Norfolk Census Explorer'. This will allow quick and easy access to a subset of data, related descriptive material and geography, and extraction of information for further analysis. Advanced users will have access to all the data available for each area level, with the exception of the origin and destination matrices. The site is due to be completed by June 2003. The project aims to meet most of the needs of internal users within the County Council.

When Key Statistics are released in February, and again when the remaining Local Statistics are released later in the year, we will update the Demographic Services web site and produce Demographic Information Notes with more detailed results, analysis and commentaries.

In the second half of 2003 we will produce a series of topic reports focusing on the local results, provisionally to include:

- the labour market
- ethnic group and religion
- occupation, industry and social classifications
- deprivation indicators
- households and dwellings
- qualifications
- car ownership and journey to work
- family composition.

In addition we intend to produce Census profiles for wards, parishes, county electoral divisions and other areas, a Norfolk Census Atlas 2001, and a user guide focusing on Norfolk statistics and area geography.

For further information, please contact Ian Coldicott, (Tel: 01603 222732), email ian.coldicott.pt@norfolk.gov.uk or visit the Demographic Services web site at www.norfolk.gov.uk/Demography/demographic_home.htm

(1 November 2002)



If you would like this document in large print, audio, Braille, alternative format or in a different language, please contact Joanne Rouse on 01603 223819 or on minicom 223833

