

2009 Calendar Year Diaries, Calendars and Year Planners

Please find attached a pre-printed order form for 2009 calendar year diaries, calendars and year planners.

HOW TO ORDER

Two options are available:

- either
- **Complete the attached order form and send the white copy to:**
Customer Services
ESPO,
Barnsdale Way, Grove Park,
Enderby, Leicester LE19 IES
- or
- **Users of computerised ordering systems such as SIMS, SAP and FAMIS, etc.**
Please clearly mark as a 2009 Calendar Year Diary Order Form
and remember to include your **Delivery Point Number** and send to ESPO.
NB. Please do not include other goods on this order.

PLEASE MAKE SURE WE RECEIVE YOUR ORDERS BY FRIDAY 27TH JUNE 2008

(We cannot guarantee an early delivery for orders received after this date.)

PRICE GUARANTEE

We guarantee that the prices shown are the prices you will pay.

DELIVERY

Social services diaries and festival year calendars will be delivered to you in November 2008, all other items will be sent in August.

ENQUIRIES

Delivery enquiries should be directed to Customer Services as follows:

- (0116) 265 7902 for customers in Cambridgeshire & Peterborough City
- (0116) 265 7901 for customers in Leicester City, Leicestershire & Rutland
- (0116) 265 7903 for customers in Lincolnshire
- (0116) 265 7904 for customers in Norfolk
- (0116) 265 7908 for customers in Warwickshire and other areas.

Other enquiries, ie. advice and guidance on diaries should be referred to Martin Lawson on Leicester (0116) 265 7945.

April 2008

Remember, FAXES are CHEAPER than the post and CONFIRM RECEIPT of your order

CALENDAR YEAR DIARIES, CALENDARS AND YEAR PLANNERS 2009 Order Form



SCHOOL/ COLLEGE/ OFFICE ADDRESS

Requisition N° Q

Lincs SAPS N°

Delivery Point N°

POSTCODE.....

RECYCLED – This product meets the National Association of Paper Merchants (NAPM) definition for recycled paper which has been adopted by the ESPO Environment Group.
 For paper products, if the pulping process is elemental chlorine free, the product receives the low polluting icon.

SHERWOOD SPECIAL DIARIES

CATALOGUE CODE	UNIT OF ISSUE	DESCRIPTION	Price Type	SSD	NETT PRICE (Excl VAT)	QUANTITY REQUIRED
135917	Each	A5 SOCIAL SERVICES , one day to a page			£5.80	
135909	Each	A5 SOCIAL SERVICES , one week to view			£3.85	
135941	Each	A5 FOSTER CARERS DIARY AND LOG BOOK , one week to view			£3.85	
135933	Each	A5 PROBATION & YOUTH JUSTICE DIARY & DIRECTORY , one day to a page			£5.80	
135925	Each	A5 PROBATION & YOUTH JUSTICE DIARY & DIRECTORY , one week to view			£3.85	

DIARIES

CATALOGUE CODE	UNIT OF ISSUE	DESCRIPTION	Price Type	CYD	NETT PRICE (Excl VAT)	QUANTITY REQUIRED
135836	Each	A4 STIFF BOUND , ESPO one day to a page with appointment times + ribbon marker			£2.85	
135828	Each	A4 STIFF BOUND , ESPO one week to view with appointment times + ribbon marker			£1.50	
135852	Each	A5 STIFF BOUND , ESPO one day to a page with appointment times + ribbon marker			£1.50	
135844	Each	A5 STIFF BOUND , ESPO one week to view with appointment times + ribbon marker			£0.85	
135887	Each	A5 SPIRAL BOUND ON SPINE , COLLINS N° 61 tablet diary one week to view			£1.45	
135860	Each	A5 SPIRAL BOUND AT HEAD , COLLINS N° 60 tablet diary one week to view			£1.45	
135895	Each	POCKET DIARY , 180 x 80mm, one week to view			£1.05	

CALENDARS

CATALOGUE CODE	UNIT OF ISSUE	DESCRIPTION	Price Type	CYD	NETT PRICE (Excl VAT)	QUANTITY REQUIRED
135992	Each	ESPO WALL CALENDAR , Size A3, year at a glance			£0.15	
136018	Each	DESK TYPE , complete with stand, approx. size 241x203mm (9 1/2" x 8"), year at a glance			£0.75	
134414	Each	FESTIVAL YEAR CALENDAR 2008 , Multi-faith festival/celebration dates, 590x840mm			£5.95	
49853	Pack	CALENDAR HOOKS (self adhesive), pack of 50			£2.00	

YEAR PLANNERS

CATALOGUE CODE	UNIT OF ISSUE	DESCRIPTION	Price Type	CYD	NETT PRICE (Excl VAT)	QUANTITY REQUIRED
136026	Each	MOUNTED , Year at a glance, size approx 910 x 610mm, SASCO			£9.45	
136034	Each	UNMOUNTED , Year at a glance, size approx 910 x 610mm, SASCO			£5.45	
140007	Each	STAFF PLANNER, UNMOUNTED , Year at a glance, for recording holidays, sickness, etc, on a 5 day week basis for up to 40 names, size approx 910 x 610mm, SASCO			£7.60	
136042	Each	MOUNTED , Year at a glance, size approx 910 x 610mm, matt laminated, Recycled ESPO			£4.50	
136050	Each	UNMOUNTED , Year at a glance, size approx 910 x 610mm, matt laminated, Recycled ESPO			£1.85	
136069	Each	SASCO FISCAL YEAR PLANNER , Cardboard mounted/laminated Tax Year 2009/10 Size approx 910 x 610mm, Fiscal week numbers, UK official holidays Includes Planner Accessory Kit			£13.95	
89842	Each	PLANNER ACCESSORY KIT , Pen & sticker pack comprising a black water based pen and 4 sheets of various peelable sticky shapes			£0.56	

Date Signed Position

WHITE COPY - SEND TO ESPO • YELLOW COPY - RETAIN FOR YOUR RECORDS

Delivery Enquiries: (0116) 265 7902 for customers in Cambridgeshire & Peterborough City (0116) 265 7904 for customers in Norfolk
 Contact Customer (0116) 265 7901 for customers in Leicester City, Leicestershire & Rutland (0116) 265 7908 for customers in Warwickshire & other areas
 Services on: (0116) 265 7903 for customers in Lincolnshire April 2008

ESPO BARNSDALE WAY GROVE PARK ENDERBY LEICESTER LE19 1ES Fax: 0116 265 7909

SCHOOL'S CREATIVE CALENDARS 2009

Order Form

SCHOOL/COLLEGE/ OFFICE

Requisition N°




ADDRESS


Customers from Lincolnshire must include their SAPS number here

Lincs SAPS N° Delivery Point N°

POSTCODE

 For paper products, if the pulping process is elemental chlorine free, the product receives the low polluting icon.

CALENDARS

CATALOGUE CODE	UNIT OF ISSUE	DESCRIPTION	Price Type	CAL	NETT PRICE (Excl VAT)	QUANTITY REQUIRED
135976	Pack	CALENDAR BLANKS 2009, A4 white card, blank area above calendar dates, pack of 50			£2.85	
135968	Pack	CALENDAR TABS 2009, approx. size 74x47mm (3"x1 ³ / ₄ "") with covers, wrapped in pack of 25			£1.75	
49853	Pack	CALENDAR HOOKS for use with tabs and blanks above, pack of 50			£2.00	

How To ORDER

Two options are available:

either • **Complete this order form and send to:**

Customer Services
ESPO,
Barnsdale Way, Grove Park, Enderby,
Leicester LE19 IES

PLEASE PHOTOCOPY FOR YOUR OWN RECORDS

or • **Users of computerised ordering systems such as SIMS, SAP and FAMIS, etc.**

Please clearly mark as a School's Creative Calendars 2009 Order Form and remember to include your **Delivery Point Number** and send to ESPO.

NB. Please do not include other goods on this order

PLEASE MAKE SURE WE RECEIVE YOUR ORDERS BY FRIDAY 18TH JULY 2008

(We cannot guarantee an early delivery for orders received after this date.)

PRICE GUARANTEE We guarantee that the prices shown are the prices you will pay.

DELIVERY These products will be delivered to you in August 2008.

Date.....Signed.....Position.....

THIS COPY - SEND TO ESPO • PHOTOCOPY - RETAIN FOR YOUR RECORDS

Delivery Enquiries: (0116) 265 7902 for customers in Cambridgeshire & Peterborough City

(0116) 265 7904 for customers in Norfolk

Contact Customer (0116) 265 7901 for customers in Leicester City, Leicestershire & Rutland

(0116) 265 7908 for customers in Warwickshire & other areas

Services on: (0116) 265 7903 for customers in Lincolnshire

April 2008

Modelling • Ceramic Arts

A CLAYS

When storing, all clays must be double wrapped after opening to prevent drying out. Clays are best stored in a cool but frost free situation, free from draughts.

Buff Stoneware

Fireclay based, inexpensive stoneware body for domestic ware. Throws well, turns easily. Plastic, strong and reliable.

10694 Firing range 1150° - 1290°C Bag of 12.5kg **£2.45**

Standard Red Terracotta

Highly plastic blend of Etruria marls giving a good red and high fired strength.

10715 Firing range 1040° - 1160°C Bag of 12.5kg **£1.95**

White Stoneware

A white-burning, refractory, smooth-textured body which throws and handles well. A very good domestic ware body of excellent colour and performance.

10723 Firing range 1200° - 1300°C Bag of 12.5kg **£2.95**

Craft Crank Mixture

For hand building large items or mixing with other clays to provide 'tooth', this coarse textured, open but plastic clay is unsurpassed. Refractory, and nicely toasted colour (speckled orange-brown under reduction). Ball clay based with several specially graded hi-purity grogs. Low shrinkage.

11144 Firing range 1170° - 1300°C Bag of 12.5kg **£4.00**

Raku

Pottery clay for hand building. Suitable for Raku and stoneware firing temperatures.

117803 Firing range 900° - 1300°C Bag of 12.5kg **£3.20**

AIR HARDENING CLAY

B Newclay Nylon Reinforced

This special clay, which air dries to a non-brittle finish, is off white and of excellent quality, being nylon reinforced for added strength. It can be painted with any classroom paint and can be re-constructed by adding water. Optional additives are the Newclay Hardener and Newclay Gloss.

13064 Bag of 12.5kg **£5.65**

C Newclay Hardener

A powder which is mixed with hot water and then brushed on to the clay to achieve case hardening.

13072 Bag of 0.45kg **£3.25**

D Newclay Gloss

Give a final transparent shiny finish to models. Designed to mix with any water-based colourant to fix and enhance NEWCLAY models. Also an effective adhesive.

13080 Bottle of 625g **£3.95**

E Ocaldo Modelling Clay - Stone Colour

A mineral and water-based non-fibrous material with a soft, fine texture which gradually hardens on exposure to air. Once dry, models may be painted using poster or acrylic colours and varnished to give added protection. Colour can stain. Take the necessary precautions to protect clothing and furnishings. Not suitable for children under 3 years. Small parts broken off may represent a choking hazard. Adult supervision is recommended. Supplied in an air tight tub.

105856 Tub of 2.5kg **£3.20**

F Natural Reinforced

A water-based product with reinforced, synthetic fibres. Malleable and user friendly, the clay gradually hardens on exposure to the air. Models can be kept workable by storing under a damp cloth. Re-constitute once a day by dampening and re-moulding.

74594 Stone Tub of 2.5kg **£2.95**

74586 Terracotta Tub of 2.5kg **£2.95**

GLAZES

Powder Glazes

In accordance with the Pottery Health and Welfare Special Regulations 1950.

Lead Free, Transparent, General Purpose

Excellent craze resistance.

08818 Firing range 1040° - 1140°C Bag of 5kg **£11.75**

Low Solubility, Transparent, General Purpose

Gives good gloss and good colour development.

08826 Firing range 1040° - 1150°C Bag of 5kg **£10.00**

Lead Free, Zircon Opacified White, Glossy

08834 Firing range 960° - 1100°C Bag of 5kg **£18.65**

G Brush On

Firing range 995° - 1036°

A specially formulated liquid glaze that is ready to use from the jar. This method of application means more creative possibilities and less wastage.

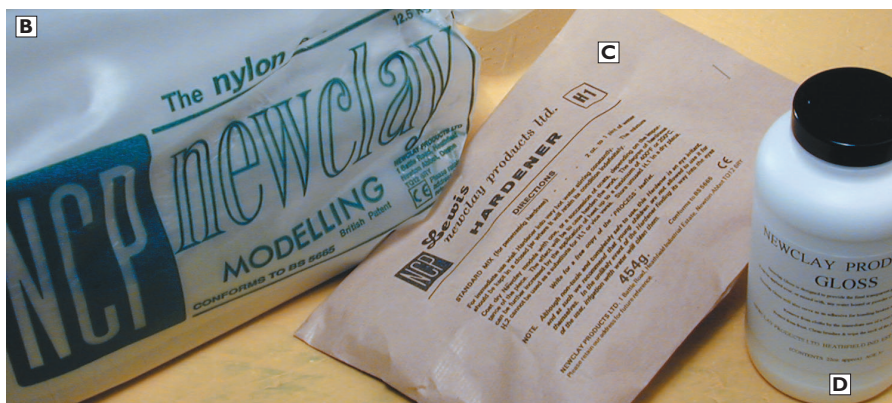
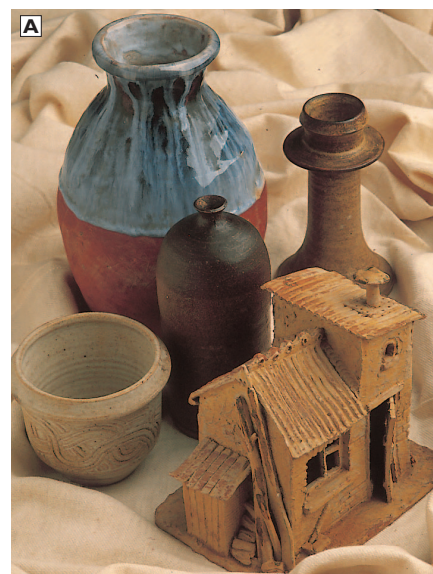
59978 Yellow **59994** Tahiti Blue

59986 Glade Green **60011** Jade Green

60003 Cocoa Bean Bottle of 473ml **£7.00**

59951 Orange Slice Bottle of 473ml **£10.00**

59463 Natural Clear Bottle of 473ml **£5.95**



i To make hair or hedgehogs, use the nylon sieve on page 890 and push the clay through!



i **CLAYS AND GLAZES**
May be ordered at any time on your own order forms or an ESPO order form.
In addition, a pre-printed order form will be sent to you during May for your bulk supplies of clays and glazes.
If you choose to order in this way we will make one delivery each term.



Clays & Glazes

ESPO has, in the past, sent all Schools a Pre-printed Order Form for **Clays & Glazes**.

Over recent years, however, the number of order forms returned have significantly declined and many orders are now placed electronically.

Should any schools still wish to place their **Clay & Glazes** orders using a pre-printed order form they can do so by Emailing: **c.services@espo.org** who will send a Clays & Glazes Order Form in PDF format by return Email.

Clays & Glazes can be ordered through your usual ordering methods referring to page 734 of the current ESPO Catalogue 2008/09 (see overleaf)



Advice or guidance on **Clays and Glazes** should be referred to Martin Lawson, the ESPO Art & Design buyer.

Tel: 0116 265 7945 Email: m.lawson@espo.org