

Children's Services  
Education Services Centre  
Market Street  
North Walsham  
Norfolk  
NR28 9BZ

Tel: 01692 409540  
Fax: 01692 406166

Your Ref:

My Ref: cs /gw /

Date: 05 January 2007

Please ask for:

Graham Wright

Direct Dialling Number:

01692 409519

E.mail: [graham.wright@norfolk.gov.uk](mailto:graham.wright@norfolk.gov.uk)

Dear Colleague,

### **Developments in Children's Services**

First of all I would like to wish you and your school a Happy and successful New Year as you return for the start of the Spring Term .The coming year will see the continued development of Children's Services in Norfolk, building on what has been a very positive period of initial implementation during 2006, reflected in the judgements in the Annual Performance Assessment, to which the contribution of schools has been crucial.

A number of key challenges remain for all of us as the Every Child Matters programme is extended during 2007 and beyond. It is in that context that the further development of partnerships with schools is so important, and which therefore will form a key area of activity in the Northern Area for me and my area management team colleagues. We are now in a position to work in a more comprehensive manner across the Area, with a view to identifying practical ways 'on the ground' that will help us all to contribute more effectively to the outcomes for our children and young people. In that regard I will not rehearse here the continued challenges which are common to us all in terms of the achievement of improved performance in the context of finite resources together with increasing expectations. There are also a number of opportunities which will help us to deliver, and it is these upon which I hope we can focus in the coming year.

Following the Northern Children's Services Area conference on November 30 last year we are putting in place arrangements for an Area Children & Young People's Partnership, to reflect at a local level the established county-wide position. Similarly we need to establish an Area Safeguarding Children Group, (working in conjunction with the Area Partnership Board) to address locally the new statutory requirements being carried out by the Norfolk Local Safeguarding Children Board (LSCB). We have also taken the opportunity to allocate each of the three Area Service Managers to one of the three Localities in the Area. As you will appreciate the Northern Area is both extensive and varied; the development of the Locality approach will help ensure that relationships between the key organisations and partners are effective, and respond more appropriately to local characteristics and needs. The Area Service Managers are keen to make contact with their local schools.

To be continued....

Continuation....

To this end it would be much appreciated if you could invite Anne Fitzpatrick, Amanda Mawbey or Tim Eyres as appropriate to one of your forthcoming schools clusters meetings in the Spring Term. I will also make myself available with the aim of helping to achieve complete coverage this Term. This will enable the Locality responsibilities to be explained and discussed, forthcoming key developments outlined, and particular Locality and Cluster priorities identified with you. My PA Helen Lee has been collating the dates for Cluster meetings; I would be grateful if you could ensure through your Chair that Helen has the complete list.

I have included for your information the following documents; some of which you will have had before:

- Northern Area Senior Management Team contact details
- Northern Area Locality and Cluster map
- Details of Area Service Manager for Localities and Clusters
- Northern Area Team Managers contact details

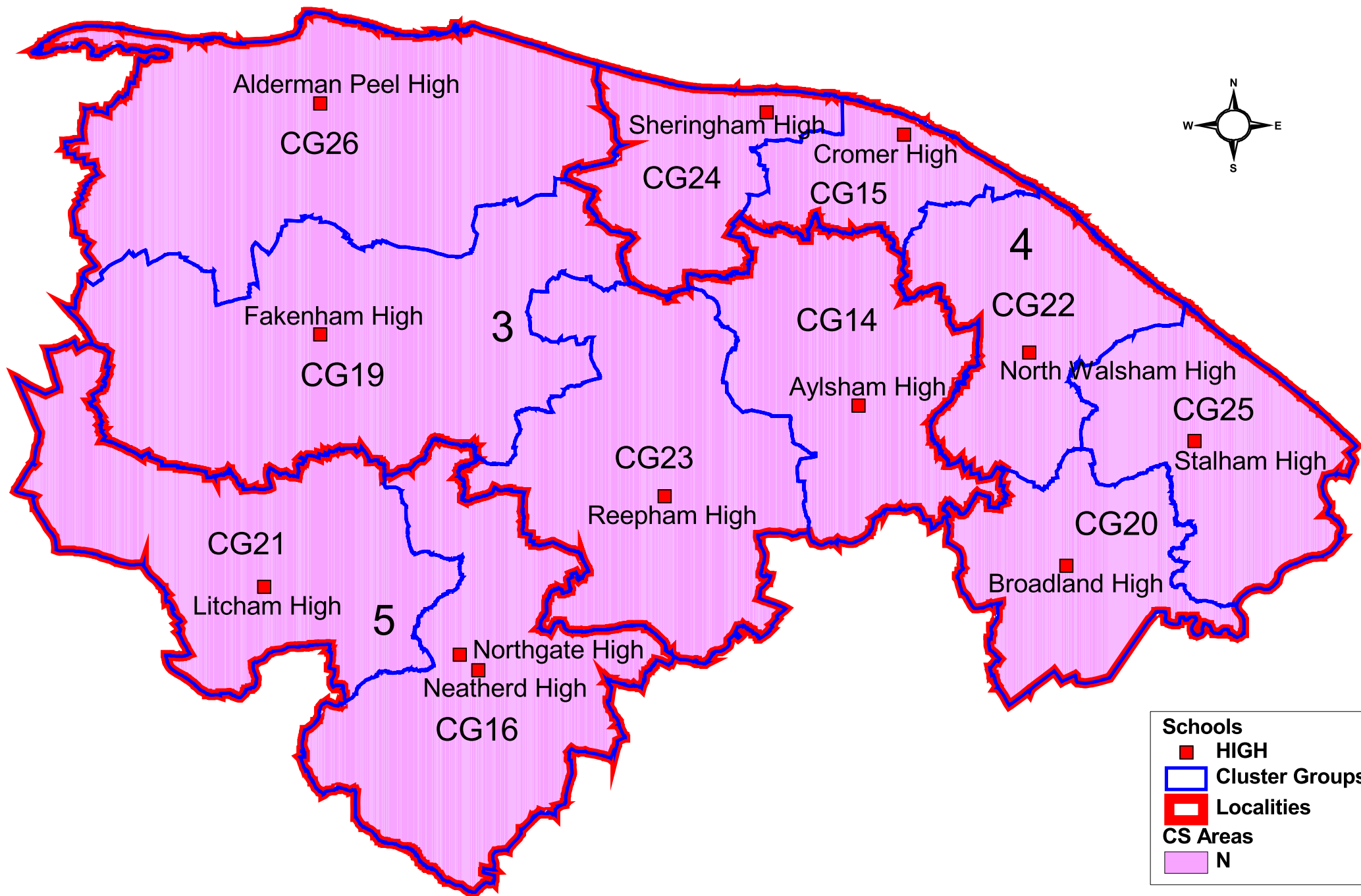
Please do not hesitate to contact me if you would like to discuss anything.

I look forward to working with you and your Chair of Governors in the coming year.

With best wishes.

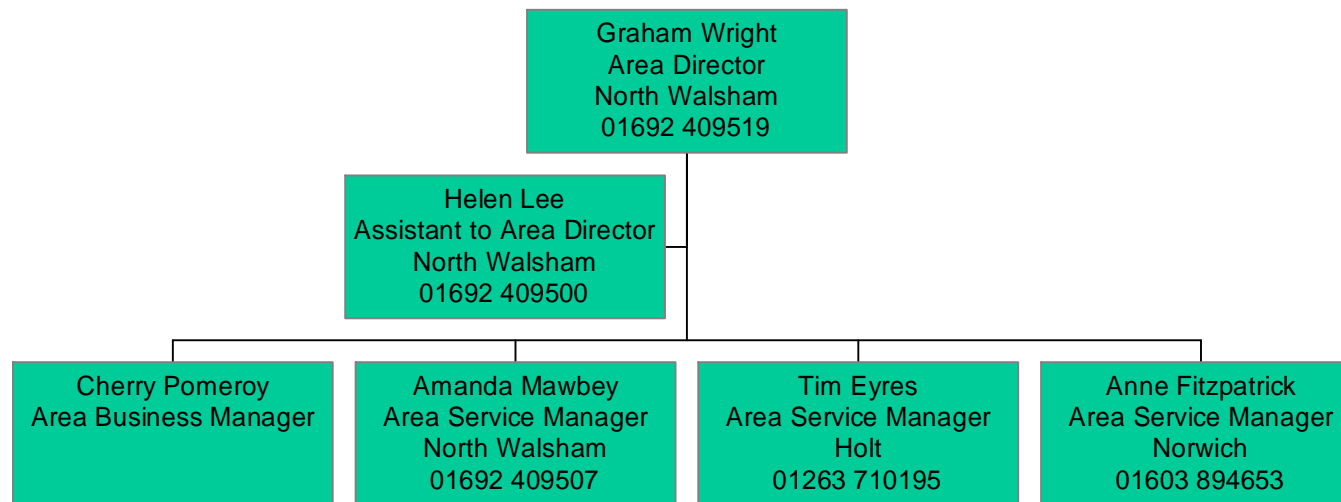
Yours sincerely

Graham Wright  
Area Director (North)



## NORTHERN AREA SENIOR MANAGEMENT TEAM

Northern Area Management Structure



And:

Bob Bond, Senior Secondary Schools Development Adviser, Norwich PDC, tel: 01603 433276

Maggie Broad, Senior Primary School Development Adviser, Norwich PDC, tel: 01603 433276

Northern Area: Area Service Managers for Localities and Clusters

Area Service Manager	LOCALITY	CLUSTER NUMBER
Amanda Mawbey (01692 409507)	4	CG14
Amanda Mawbey (01692 409507)	4	CG15
Anne Fitz-Patrick (01603 894653)	5	CG16
Tim Eyres (01263 710195)	3	CG19
Amanda Mawbey (01692 409507)	4	CG20
Anne Fitz-Patrick (01603 894653)	5	CG21
Amanda Mawbey (01692 409507)	4	CG22
Amanda Mawbey (01692 409507)	4	CG22
Tim Eyres (01263 710195)	3	CG23
Amanda Mawbey (01692 409507)	4	CG24
Amanda Mawbey (01692 409507)	4	CG25
Tim Eyres (01263 710195)	3	CG26

## Northern Area Team Managers

<b>Name</b>	<b>Team</b>	<b>Office</b>	<b>Contact telephone</b>
Maggie Barwell	Area Early Years, Childcare Specialist Support & Extended Schools	Norwich	01603 306321
Justin Blocksidge	Area PRU and Learning Support Centres and Behaviour Support Services	Coltishall	01609 737764
Shaun Burland	Assessment Team	North Walsham	01692 502215
Janet Butler	Senior Advisory and Support Teacher	North Walsham	01692 500445/409517
Bianca Finger-Berry	Assistant Team Manager, Social Work, EPSS	North Walsham	01692 409524
Chris Greensmith	Area Attendance Team	North Walsham	01692 409506
Steve Higgins	Snr Area Educational Psychologist	North Walsham	01692 409522
Caroline Marriott	Norfolk Family Solutions	Holt	01263 711498
Jane Hudson	Youth Service Team	North Walsham	01692 402498
Jim McLauchlan	Children with Disabilities	Gt Yarmouth	01493 335612
Arlene Moore	Family Intervention Service	Norwich	01603 788264
Cathy Mouser	Looked After Children including Contact Supervisors	Holt	01263 710195
Steve Parker	Leaving Care Team	Holt	01263 710195
Tracey Price	Assistant Team Manager, Social Work, EPSS	Norwich	01692 409524
Sally Anne Sinclair	FAST managed in Central and North	Gt Yarmouth	01493 850317