

NORFOLK DISABILITY INFORMATION SERVICE

ISSUE 28 NOV/DEC 2002

www.getphysical.norfolk.gov.uk

News from NDIS

The district Physical Disability Information Sheets have been updated. Issue 4 (Nov 02) is at www.getphysical.norfolk.gov.uk. If you have any problems downloading new masters, please call 01603 763295.

Vauxhall Learning Station

The Vauxhall Centre in Norwich has just opened the Vauxhall Learning Station within the centre, as part of the Learning City on Line project. Whilst providing the centre members with some state of the art specialist IT equipment, it also enables the centre to open its doors on Tuesdays and Thursdays from 9.00am until 8.00pm to members of the general public. This is a very exciting partnership which has huge benefits for centre members and the local community.

NCODP Newsletter

This is the last time that the NCODP newsletter will be sent out with standard print issues of NDIS News. If you would like to continue to receive it (free of charge) please complete the NCODP application form enclosed with this mailing.

Wymondham Toy Library

This library for children with special needs is open from 1.00pm – 3.00pm on the 2nd Tuesday of each month at

Wymondham Health Centre, 18 Bridewell Street. Many toys are available for loan and it gives the chance to socialise as well. Extra sessions are held in the summer holidays. More details from Julia Waterfield or Diane Woods on 01953 606201.

Changes



The **Welfare Benefits and Advocacy Service [WBAS]** has changed its name to **Disability Rights Norfolk [DRN]**. All contact details as before (01603 666951).

Workable (a charity which found work experience for people with disabilities) has closed due to lack of funds.

Canine Partners for Independence (assistance dogs) has relaunched as **Canine Partners**. Contact at Unit E2, The Brickyard, Steep Marsh, Petersfield, Hampshire GU 32 2BN, tel: 01730 894830 or www.caninepartners.co.uk

From January 2003 the new county administrator of **Compassionate Friends** will be Eve Phillips, tel: 01379 640369.

The Foundation for Assistive Technology [FAST] has relocated to 12 City Forum, 250 City Road, London EC1V 8AF, tel: 020 7253 3303.

Norfolk Social Services **Family Based Respite Care Scheme** for disabled children and their families has been renamed the **Short Break Scheme [STB]**.

CLIMB [Children Living with Inherited Metabolic Diseases] is now located at Climb Building, 176 Nantwich Road, Crewe CW2 6BG, tel: 0870 770 0326.

Judith Horner is the new Manager of **Norfolk Deaf Association**, tel: 01603 404440

Information and outreach

Deaf **ConneXions** are expanding their outreach advice and information sessions for people who are deaf or hard of hearing. New sessions are planned for Fakenham at the Fakenham Focus Centre (Cattle Market Street) and at the new Norwich Hospital. A new resource centre to be based at the Deaf Centre, Johnson Place, Norwich is planned for the New Year. The service offers a range of equipment for people to try out to help them manage their hearing loss better and includes equipment such as listening devices for the television, amplifiers for the

telephone, etc. Some of the equipment can be provided by Social Services on a long-term loan basis and other items can be purchased privately. Information is also available on the range of services and support available for people with a hearing loss. For more information about dates, times, etc. contact Olive Young or Sue Moore on 01603 660889 (voice and fax), 01603 611113 (minicom) or email sue@deafconnexions.org.uk

ADHD support

'Little Devils' meets at the Cadge Road Community Centre, North Earlham, Norwich on Wednesdays 10.30am–1.30pm. Information packs and crèche for younger children available. Contact Joanne on 01603 503970.

Large print bus timetables

Norfolk County Council Passenger Transport Unit can make information on bus timetables available in large print. Call 01603 223800 and speak to the Customer Services Team.

Your help wanted

West Norfolk Befriending Project

This is a new scheme set up as a partnership between West Norfolk Age Concern, West Norfolk Deaf Association and West Norfolk Carers' Project. The partners are aware that many people in West Norfolk feel isolated and a befriender calling to their homes could be a lifeline. The rural nature of West Norfolk and the fact that many people move there to retire exacerbates the problem. The project is urgently looking for volunteer befrienders who can help to ease loneliness and isolation by providing a

listening ear, offering emotional and social support and practical help, such as with shopping. If you have about an hour to spare each week or fortnight please call the Co-ordinator, Carmel Wolverson, on 01553 763500.

Disability Rights Norfolk

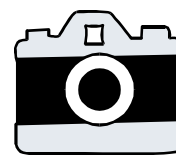
DRN is a voluntary organisation providing advice and assistance with all issues relating to disability. It needs people with a compassionate nature and time to spare as:

- ♦ Welfare Rights Advisors: this includes giving advice and assistance regarding benefit applications and benefit issues;
 - ♦ Administrators: to provide office support and assist in the day to day running of the office.
- Tel: 01603 666951.

Citizen advocacy

Changing Places recruits, trains and supports volunteer Citizen Advocates who represent the wishes and feelings of people with learning difficulties, and will stand up for their rights. It was set up to support people who are moving from Little Plumstead Hospital to homes in the community. The service is expanding and has recently opened a new office in Fakenham. It is now looking for volunteers with all types of life experience to join the team of advocates supporting people in and around Fakenham and in the north and west of the county. Volunteers will receive comprehensive induction training, paid expenses, ongoing support and additional training as required. If you believe everyone has the right to have their voice heard and want to help someone achieve a better quality of life, contact Changing Places on 01328 853358 or write to The Maltings, Hall Staithe, Fakenham NR21 9BW.

Freedom in Focus ...



... is a national photography competition run by Disability Now and Leonard Cheshire. The two categories, open to all amateur disabled photographers in either the under-18 or 18 and over age groups, are Nature and Modern Life. The closing date for entries is 30th April 2003 and the prizes will include up to £500 in cash, cameras, a trip on the London Eye and the chance to enrol on a photography course. Further information, rules and entry forms from Disability Now on 020 7619 7319 or from judith.reid@scope.org.uk or visit www.disabilitynow.org.uk

Anglia Care Management

This company offers a service to elderly and disabled people who need help to arrange a care package. It does not provide actual care, but will produce a care plan, co-ordinate the provision of care, arrange transport, home repairs, housekeeping, advise on adaptations, monitor service providers, ensure that all healthcare, social service provision and monetary benefits are received, etc. There is a charge for the service but this will be clearly explained prior to any commitment. More details from 01603 768808 or visit www.angliacaremanagement.co.uk

NNAB in Diss

The Norfolk and Norwich Association for the Blind now have an equipment and information centre at Diss. Held at the Methodist Church Hall, it is open every Monday from 9.30am – 1.00pm.

Benefits & Finance



Victory against charging

A man with learning disabilities has won a landmark case brought against him by Bradford Social Services for non-payment of charges for his day centre. It was found that the council had mistakenly considered his family's income during an appeal hearing calculating his charges. Bradford Council has been directed to remove the charge to him, which may set precedents for other service users.

Powerchair Insurance

The Department of Transport is considering a proposal to make motorised wheelchair users take out 3rd party insurance because of a rise in the number of accidents involving the vehicles. The Disability Rights Commission is fighting the proposal because it could impair the mobility of disabled people who could not afford to pay for insurance.

Incapacity Benefit reform

The government has published a green paper *Pathways to Work: Helping people into employment* proposing "a comprehensive package of new measures to help people with an illness or disability off benefits and back into work". Some of the proposals (to be piloted first) are:

- ♦ for new claimants, the creation of a new framework of five or six work-focused interviews spaced over the "early stages of the claim". Those with the most severe

disabilities and those only likely to be on benefit for a short period will not be required to attend;

- ♦ close linking of the medical assessment process and the new interviews to allow quicker decisions to be taken on whether a person should be on an incapacity benefit, back to work or on JSA;

- ♦ new rehabilitation centres provided jointly by Jobcentre Plus and the NHS to focus on helping those with conditions such as back pain, depression, coronary and respiratory problems;

- ♦ a Return to Work Credit of £40 per week for 52 weeks for those find a job paying less than £15,000 a year.

Comments on the proposals should be submitted by 10th February 2003. For a full summary of *Pathways to Work* telephone 020 8867 3201 quoting code PTW1 or download from www.dwp.gov.uk/publications

Housing Benefit reform

Major reforms to Housing Benefit were announced in October. During mid to late 2003 in 10 pathfinder areas standard local housing allowances will be introduced - initially in the deregulated private rented sector - based on area and family size. This is aimed to give people greater freedom to decide where to live, simplify the benefit and speed up administration. The money will be paid directly to the tenant, except where substantial arrears have built up or if tenants have limited ability to manage their own affairs. Tenants who move to a cheaper property will be able to keep the difference between the rent they pay and their standard local allowance. Rent officers will calculate allowances monthly and make them public. A claimant will

know beforehand what, given his household size, his allowance in a particular area will be.

Pension Credit

The State Pension Credit will be introduced in October 2003. It will be a single payment but will have two elements:

- ♦ a *Guarantee Credit*, to ensure a minimum level of income to those aged 60 and over; and a

- ♦ *Savings Credit* which will from age 65, provide an additional income for pensioners who have made some provision for their retirement (in addition to their basic state pension) such as a small second pension or modest savings. The

Guarantee Credit will be at least £100 for a single person and £154 for a couple. The amount will be based on a person's circumstances and will include additional amounts for people who have relevant housing costs, disabilities (and satisfy certain criteria), caring responsibilities, or ongoing transitional protection from a previous change. Entitlement to the Guarantee Credit will be calculated by comparing their income with the appropriate amount and the difference between the two will be payable.

Pension Credit will abolish the rules excluding pensioners with £12,000 or more of savings from any help and savings below £6,000 will be disregarded. The capital disregard will be £10,000 for those in residential care or nursing homes. Also income assumed from capital will reduce to £1 in every £500.

The Savings Credit will be calculated by taking into account any qualifying income above the level of the Savings Credit starting point which from

2003 will be equivalent to the full basic Retirement Pension. Pensioners will get 60p for every £1 of qualifying income between the Savings Credit starting point and their appropriate amount up to a maximum of £23 qualifying income if single or £31 qualifying income for couples.

Changes to housing grants

From 19th July 2003 most of the detailed provisions in the Housing Grants, Construction and Regeneration Act 1996 (which provides for the current housing grant system such as renovation grants and home repair assistance) will be abolished. Mandatory disabled facilities grants will **not** be abolished, but the mechanism for providing discretionary assistance for adaptations is affected. The Order introduces a new wide discretionary power to allow authorities to provide financial and other assistance for repair, improvement and adaptation, with limited constraints on the exercise of their discretion. They will have the power to set their own conditions for assistance, such as whether to perform a means test and the circumstances under which any financial assistance should be repaid. This also enables assistance to be given in the form of a grant, loan, labour, materials or in any accommodation. Various protections apply in relation to the exercise of the new power including the requirement that before imposing or enforcing any condition relating to payment, authorities must have regard to the person's ability to afford to make a contribution or repayment. No local authority can exercise the new power unless they have:

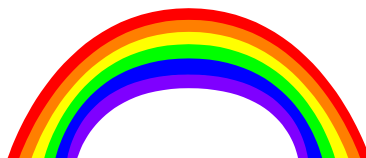
- ♦ adopted a policy for the provision of assistance under the power;
- ♦ given public notice of the adoption of the policy;

- ♦ made available for inspection free of charge at their principal office at all reasonable times a document that sets out their policy in full; and made available by post a summary of their policy on payment of a reasonable charge if required.

Minimum Income Guarantee (MIG): At a glance guide has been produced to assist staff in local authorities and voluntary organisations who work with pensioners but have no specialist knowledge. It is a simple factsheet containing key facts about MIG and should help determine whether a client might be entitled to MIG.

Income take-up: a good practice guide is a more detailed guide applying to all benefits and is aimed to share best practice in activities and campaigns to promote benefit take-up. Both publications available from 0845 6065 065.

Follow the rainbow



The Rainbow supermarket chain is introducing new equipment for use by older and disabled customers. All stores will have accessible toilets and will provide wheelchairs. Shoppers at the larger Rainbow stores will have access to the new Roma shopping trolley before Christmas. Visit the Roma website at www.romatrolley.com or ask stores for details.

Swimming at Bungay

Rethink Disability and Waveney PCT are running swimming sessions for people with a disability at Bungay Swimming

Pool every Friday from 2.00pm-3.00pm. Help and support is available from volunteers trained to work with people with health problems and those wishing to reduce the risk of heart disease, diabetes, depression etc. For more information or to volunteer for the scheme contact Ian Bliss on 01449 7701154 or Olive McManus on 01502 718192.

Reports and surveys

Poor transport

An opinion poll carried out for the Disability Rights Commission reveals that almost half of disabled young people said that problems with transport made it difficult for them to leave their homes – visit www.drc-gb.org.uk

Changing the Way We Think About Blindness is a report from the RNIB which finds that only one in nine of the 1,076 people surveyed said they received a social services visit at the time they lost their sight, and that one in five waited longer than a year. Available from 0800 502030.

The YWCA has found that young women living in the countryside are among the most deprived and excluded people in England and Wales. Lack of affordable childcare and social activities along with poor public transport were highlighted as major problems. The charity's recommendations include greater use of outreach facilities and telephone helplines, more holistic services for young mothers and for young women to be more effectively included in rural regeneration initiatives. *Beyond the Bush Shelter – Young Women's Choices and Challenges in Rural Areas* from

01865 304215 or www.ywca-gb.org.uk

Made-to-measure

Mail order clothing company Hansel & Gretel offers made-to-measure clothes for children with disabilities. Contact Hansel & Gretel, Upper Largo, Fife KY8 6EA, tel: 01333 360219 or visit www.hansel-and-gretel.co.uk

Free short courses

WEETU offer help with childcare and travel costs for the following free courses to be held at WEETU, Magdalen Street, Norwich: Health & Safety Certificate 2nd December 9.30-12.30pm **and** 9th December 9.30-1.30pm and First Aid Certificate, 6th December 9.30am – 1.30pm. Book a place on 01603 767367.

Toilet Keys

RADAR National Toilet Scheme Keys can be purchased from the RADAR on-line shop (£3.50 if VAT exempt, £4.11 otherwise) at www.radar.org.uk

Park and Ride

Disabled people are now able to get free travel into Norwich from the Costessey Park and Ride for an unbroken journey in either direction between Costessey Park and Ride and the city centre, and on the 508 for disabled passengers between the hospital and the Park and Ride. To qualify people will need to show the photo part of their parking badge. Disabled passengers wishing to break their journeys or go from the hospital to the city centre will need a concessionary bus pass. Other park and ride schemes at Norwich Airport, Harford and

Postwick already offer free travel for disabled people.

Publications



Disabled people and mental health support services is a free booklet from Mind which offers help to disabled people with mental health needs and includes a questionnaire asking disabled people for their experiences of mental health support. Tel: 020 8221 9666.

From October 2002 local councils have to follow new government guidance when charging people for community care services such as home helps, day centres and meals on wheels. Many will not have to pay anything, but some may be asked to pay more. The Disability Alliance guide *Charges for Community Care Services* explains how councils should calculate charges and what to do if you think you are being over-charged or cannot afford to pay. It also includes a table to help work out weekly disability-related expenses. Price £4.00 per copy or £2.50 for individuals on benefit. From Disability Alliance, 88-94 Wentworth Street, London E1 7SA, tel: 020 7247 8776.

The Disability Alliance also publishes *Benefits! Where do I Stand?* a guide to moving into work for people with mental health problems. Price £3 or concessions £2.50. Contact details as above.

About Epilepsy is an information pack for adults with epilepsy who have associated

mild to moderate learning disabilities. It includes leaflets on eight different aspects of living with the condition, including medication, EEGs, MRI scans, etc. £2.50 to professionals, free to others from The National Centre for Epilepsy, Chesham Lane, Chalfont St Peter, Gerrards Cross, Bucks SL9 0RJ, tel: 01494 601400.

Contact A Family has recently produced two new factsheets: *The Fathers Factsheet* draws on the experiences of a number of fathers of disabled children who attended CAF workshops; and *A Genetic Condition in the Family* gives a brief introduction to genetics, explores what counselling involves and tries to address the worries and concerns that surround it. CAF, 209-211 City Road, London EC1V 1JN, tel: 0808 808 3555.

Brothers and Sisters – how to help the siblings of very sick and disabled children is a booklet written predominantly from the well child's perspective but can apply to all the children in a family. It is brightly illustrated and contains tips and suggestions for families. Written and published by Sarah Barrell, price £7.50 ISBN 0 9542871 0 X

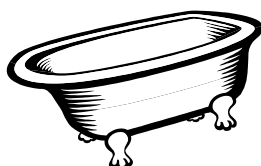
The Stroke Association has published an updated leaflet *Sex after Stroke* which gives practical advice on how to tackle the emotional and physical problems which frequently occur after a stroke. Free from The Stroke Association, Northampton Resource Centre, 61-69 Derngate, Northampton NN1 1HD or tel: 01604 623933.

Sports Activity Day

The Norman Centre at Bignold Road, Norwich is holding a

Sports Day for anyone with a disability on Wednesday 18th December from 2.00pm – 4.00pm. Gym instruction, short mat bowls, boccia, new age curling, table tennis and bowls will be on offer. Further information from Jane Hannah (Broadland District Council) on 01603 430570 or Keith Sutton (Norwich City Council) 01603 212123.

Bathing equipment



AGR Interiors Ltd. have a showroom dedicated to bathing products for disabled people. Their range includes walk-in baths, level access shower trays, bath seats, powered lifts, handrails etc. They can also provide an installation service. Telephone 01379 644282 or visit www.washability.co.uk

For sale

- ♦ Karomed Keswick arm chair 20" seat depth and 23" height (could be reduced) in honey velour, with transflow cushion. Unused. Cost £400 new, £200 ono. Tel: 01553 841941.
- ♦ Norfolk Association for the Disabled has a number of ex loan fleet power chairs for sale at very reasonable prices. Please phone Hilary Jefferies on 01603 219600.
- ♦ Straight run 13-stair Acorn stairlift. Purchased new Aug 1st 2002 and used for only 6 weeks. Cost £1950 – offers invited. Vendor will consider contributing to cost of uninstalling and reinstalling. Telephone 01263 733535.

Mental Health information

Victoria Howell has recently been appointed to the post of Mental Health Information Strategy Co-ordinator as part of the Norfolk Mental Health Partnership Team. Her key task is to create a county wide Directory of Mental Health Services (both statutory and voluntary) for service users, carers, and medical professionals. She will be building up a picture of existing Mental Health information resources (such as local directories or websites), so please contact her if you are aware of any such resources, or if you know of any gaps in the Mental Health information system. If you have any comments, suggestions or contacts, please email her at victoria.howell@norfolk.nhs.uk

Welfare Benefits Training

West Norfolk Anti-Poverty Workgroup is offering free training on various benefits in a programme running from January to August 2003. All sessions will take place at St Augustine's Healthy Living Centre, King's Lynn. Programmes and bookings from Gemma Sedgley on 01553 616733.

S.A.S

In the Great Yarmouth and Waveney area the Norfolk Children's Fund 'Social Activities Scheme' will be offering social activities and opportunities to build on a variety of social developmental areas to include relationships and life skills – from money management to using IT safely. It is aimed at children with special needs aged 5-13, (but not excluding young people up to the age of 19). Children may wish to start a hobby, go dry ski-ing, wall climbing or gardening. Small groups of

about 12 children, broadly matched in abilities, will meet regularly once a month on a Saturday or Sunday from 10.00am – 4.00pm and each group will have a supervisor, two experienced staff and a volunteer.

A further club for older teenagers and young people up to the age of 22 in Gorleston is also planned - to be held initially once a month, with a view to becoming weekly. Transport will be available if needed. Contact Lorna Hamilton on 01493 330930 for further info on all clubs.

Care Homes

The Elderly Accommodation Counsel is an independent charity which offers advice about all forms of accommodation and care for older people across the UK. It holds a regularly updated database of over 45,000 sheltered housing developments and care homes. Advisers can give guidance about services to enable staying at home, renting or buying sheltered or retirement housing, residential care and nursing homes. Tel: 020 7280 1343 or view the database at www.housingcare.org

Useful websites

LASA's Multikulti website is being created to provide free access to good quality, regularly updated information materials in translation. Working with partners including Age Concern, Asylum Aid, Shelter, National Debtline etc, the website contains translations of leaflets in ten community languages covering six key areas: immigration and asylum, welfare benefits, employment, housing, health and debt. Languages were selected according to whether

they represented a newly settled community in the UK, or if a longer-established community had low levels of spoken English and few translated materials available. They are: Albanian, Arabic, Bengali, Chinese, Farsi, French, Gujarati, Somali, Spanish and Turkish. Visit www.multikulti.org.uk

www.poverty.org.uk is a website providing statistics on poverty and social exclusion. Produced by the New Policy Institute, with support from the Joseph Rowntree Foundation, it monitors poverty levels in the UK and provides statistical indicators on all aspects of the subject. All data is derived from official sources and continually updated.

The National Family & Parenting Institute is working with the Joseph Rowntree Foundation and Leicester University on a study of good practice in supporting disabled parents. It aims to find out what support parents have found helpful, or would find helpful. Have your say at www.nfpi.org.uk/disabledparents/

www.goodaccessguide.co.uk is a network of county websites providing verified and photographed details of accessible sporting, leisure and entertainment venues in the UK and Ireland. They are looking for people with time to spare who would like to help build the resource using their local knowledge, and earn money too. Visit the site or call Claire on 0870 241 6129.

www.abletogo.com is a new site listing accessible holiday accommodation in the UK. It enables you to input your personal access needs and check out the facilities that are important to you.

Blue Peter Lend an Aid Library

This service offers deaf children and their families the opportunity to borrow the latest versions of radio aids and other equipment to assess in the comfort of their own homes and at school. Based on the evidence about the benefits to the child of using the equipment, families may be able to obtain the equipment from their educational authority or social services on a long-term basis. Loan fees range from £5 to £25 and the very latest equipment is available. For a factsheet on the scheme contact the National Deaf Children's Society on 0800 800 8880 or visit www.ndcs.org.uk

disability discrimination case to an employment tribunal. It includes advice on the questions to ask before you make a claim, how to fill in the forms and what happens at a tribunal hearing. Tel: 08457 622633, email enquiry@drc-gb.org or download from www.drc-gb.org

Tax breaks for access?

The Disability Rights Commission and a coalition of business groups led by the Confederation of British Industry have proposed to the government that businesses should receive tax breaks to help them with the cost of improving access to premises for disabled people.

Copyright

The Copyright (Visually Impaired Person's) Act has just received Royal Assent. This removes the copyright barriers preventing blind and partially sighted people getting information copied into a format they can read by enabling schools and voluntary organisations to make books available in large print or on tape. It allows a single copy of a book to be made in an accessible format. Multiple copies can be produced, but must comply with a publisher's licensing scheme, if one exists.

Charity law changes proposed

A consultation document includes plans to widen the definition of a charity to an organisation "providing public benefit" and to relax the rules on campaigning and trading. Organisations with an income of less than £10,000 a year would no longer need to be registered, making it easier to set up small local charities. *Private Action, Public Benefits*

Legal Issues



Human Rights Act win

A disabled woman and her husband have been awarded £10,000 damages under the Human Rights Act 1998 after being forced to live in a "wholly unsuitable home" for 18 months. Mr Justice Sullivan ruled that the woman had been almost totally confined to her home due to the "corporate negligence" of Enfield Council which had shown a "singular lack of respect" for the couple's private, family and home life, in violation of article 8 of the European Convention on Human Rights.

DRC Guide

The Disability Rights Commission has issued a free guide *How Do I Make a Claim?* which explains how to take a

is available at www.strategy-unit.gov.uk/2002/charity/report

Norfolk Carers Grant

New and established Carer Support Groups are invited to apply for a Small Grant to help them in their work. Two kinds of grant are available: up to £250 for existing groups for Carers, or up to £500 for new groups. A carers group may be mainly for people with a disability or health problem, but if they undertake **separate activities to support their Carers**, such as offering Carers special training, developing a leaflet to support them, or providing leisure or sporting activities for Carers, it may be considered for a grant. Decisions about eligibility are taken by representatives from three carers' agencies: Crossroads Caring for Carers, the Norwich & District Carers' Forum, and the West Norfolk Carers' Project. To apply: tel: 01603 228847. **Deadline for applications: Jan 31st 2003.**

Skills Check

A Learndirect Skills Check is a great way to help people to achieve their goals: better job prospects, having more confidence, help their children with their homework, etc. Answer a few questions and Learndirect will help you identify which skills you need to improve and what you should do next. You can brush up on spelling and punctuation, develop number skills or improve communication skills. Visit your local Learndirect centre – phone 08080 200 800 and quote 'skills' to find the nearest one to you.

Disability Forums

Next meetings:

♦ Broadland – 9th January 2-4.00pm at Age Concern

Training Rooms, Old Catton, Norwich (issues include disability awareness);

♦ South Norfolk – 29th January at South Norfolk District Council Offices 1.30-3.00pm (issues to include County Council Strategy for Public Transport and Future Waste Strategy for South Norfolk);

♦ North Norfolk – 10th February at North Norfolk District Council offices (issues include the DDA, health – performance criteria for GPs, lack of accessible housing, increasing employment opportunities for disabled people, loop systems in public places).

♦ Norwich PCT has recently set up a Disabilities Sub Group of the Health Forum – contact Louise Mills on 01603 307247.

Further information from Sandy Griffiths on 01493 722131 or sandygriffiths@makingsense.org.uk

New OU course

The Open University has launched *Knowledge, Information and Care*, a new course aimed at health and social care professionals and lay people with an interest in the area. It is based around four separately-themed CD-ROMs: Defining the individual patient or client; the evidence base; information for service users and the public; and communities and populations. The course can be studied on its own or can contribute towards a degree or diploma. Visit www.open.ac.uk/shsw or tel: 01223 361560.

Every effort is made to ensure that the content of NDIS News is correct, however we cannot be held responsible for errors or omissions. Goods and services featured do not carry any recommendation from NDIS or Norfolk Social Services

Listening Books ...

... provides a postal audio book library service to anyone with an illness or disability which makes it impossible or difficult to hold a book, turn pages or read in the usual way. It costs £50 per year but sponsored membership is available on a first-come-first-served basis to a limited number of qualifying individuals. Tel: 020 7407 9417



A Very Happy Christmas and Best Wishes for 2003 to all readers.

**Produced by
Heather Davy
NDIS
The Vauxhall Centre
Johnson Place
Vauxhall Street
NORWICH NR2 2SA
Tel 01603 763295
Fax 01603 610632
E-mail: heather.davy.socs@norfolk.gov.uk
Tape version by
Chatterbox**



If you would like NDIS News in large print, audio, Braille, alternative format or in a different language, please contact NDIS on 01603 763295