



**Norfolk** County Council  
at your service



every **child** matters  
a brighter future for Norfolk's young people

## SEN Strategy update

Update 5: June/July 2008

**Our Strategy for Special Educational Needs** aims to improve the range of specialist provision across Norfolk for children and young people.

In future all special schools will be called **complex needs schools** and provide for children and young people aged 2-19 years. At the moment there are 39 specialist units in mainstream schools, in future the Strategy aims to increase this to 59 **specialist resource bases** and each will have an area of specialism.

### What has happened since the last update?

The SEN Strategy Team held area focus groups to talk with recommended specialist resource base schools (including Governors and SENCOs) about future specialisms, admissions, funding and service level agreements. The Team has also continued its ongoing discussions with Special School head teachers about the complex needs school model.

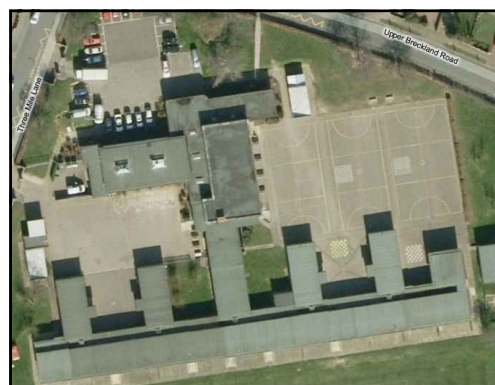
When looking at the future number of complex needs school places needed, the SEN Strategy Team has considered:

- Information from NHS Norfolk, Public Health Directorate on SEN incidence
- Norfolk County Council, Children's Services SEN profile data
- Planned housing growth information

NPS Property Consultants have visited 70+ potential specialist resource base and complex needs school sites. They have looked at a range of factors such as existing site and buildings, potential for development, services, costs and risks.

A training plan is being developed to ensure that staff at specialist resource base schools can achieve the skills and expertise needed for their specialism.

Initial planning is underway for the development of residential and short breaks provision across the county to increase the range and number of places available to children and young people with special and additional needs.



Possible specialist resource base site

### Are you a parent and would you like to be involved?

We are currently looking into the best way of forming a county parent reference group for the SEN Strategy. We think that we would do this by arranging meetings for any parents/carers to attend to find out about the SEN Strategy and raise any issues they would like to be considered. A representative for the group would be nominated to become a member of our SEN Strategy Project Board in addition to our current Family Voice Norfolk representative.

If you are interested in attending a parent/carers meeting please call us or provide your contact details via our website. Go to [www.norfolk.gov.uk/SENStrategy](http://www.norfolk.gov.uk/SENStrategy) and click on **Parent Reference Group**. By providing us with your address and availability, you will help us to find the most suitable locations and times for meetings to be held.

## Good news

### Norfolk - one of only 21 national Short Break Pathfinders

Being awarded the status of Short Breaks Pathfinder from April 2008 is a major achievement by Norfolk County Council, NHS Norfolk and Gt Yarmouth & Waveney Primary Care Trust, working together in partnership. The funding that will come to Norfolk over the next couple of years will enable us to develop and expand short breaks services to better support disabled children and their families.

**Congratulations** to Harford Manor Special School - now our third Special School rated Outstanding by Ofsted.

**We are pleased to welcome** Helen Howard, HR Consultant who has recently joined the SEN Strategy Team as a secondment. Helen's role is as a liaison between the SEN Strategy Team and existing HR teams regarding all staffing implications of the Strategy. Schools should continue to contact their link HR Consultant for all HR-related queries including those relating to specialist resource bases and complex needs schools.

## What happens next?

We will report the results of the current feasibility studies and an outline implementation plan to County Councillors. These reports to Councillors can be viewed online seven days prior to each of the following meetings:

- 16 July 2008 Children's Services Review Panel
- 29 July 2008 Cabinet Scrutiny Committee
- 11 August 2008 Cabinet

Please go to [www.norfolk.gov.uk/committees](http://www.norfolk.gov.uk/committees)

Click **Papers** next to the meeting you are interested in, then click **Agenda** with the date (listed above) for that meeting. Scroll down the agenda and click on the blue link to our **Strategy for Special Educational Needs** item to view the report. To view appendices (maps etc) click on each blue **Appendix** link.

## New Review of Statement Funding

A new project is looking at the way statements are funded in Norfolk. As well as considering what other authorities do, we will be seeking opinions and ideas through a number of half-day focus groups. Parent/ Carer events are being organised in collaboration with Norfolk SEN Network and Family Voice Norfolk. Children's Services Staff and Schools are also involved — they can find out more by viewing MI Sheet 90/08.

## For further information and feedback

Please contact **Kim Mwanza, SEN Strategy Project Manager**

By phone: 01603 224495

By email: [senstrategy@norfolk.gov.uk](mailto:senstrategy@norfolk.gov.uk)

By post: Room 24, Children's Services, Norfolk County Council, Martineau Lane,  
Norwich, NR1 2DL