

Karen Routledge
Education and Funding Consultant

September Newsletter

Open College Network Accreditation

Karen Routledge Limited is an accredited OCN Centre with the following courses delivered at level 2:

- Funding Made Easy
- K'NEX Hands on Learning for Tutors
- Successful Holiday and Summer schools
- Prosperous Extended Schools
- Monitoring and Evaluation
- Face Painting
- Other tailored training - contact Karen or check her website for details

Courses can be delivered throughout the country

Seventh Big Draw Event

The Campaign for Drawing invites everyone to join in with the seventh Big Draw running 1-31 October 2006, encouraging the use drawing as a powerful tool for engaging with the past, present and future. Go to <http://www.thebigdraw.org.uk/> to find out more. If you are interested in using drawing for an event check out the Campaign for Family Learning Drawing Games free download. www.campaignforlearning.org.uk/pdf/FLW2006/DrawingGames_final.pdf

Free K'NEX User Group Resources/Guides

The K'NEX User Group has just updated its website www.knexusergroup.org.uk with many more free resources, which include models to build, challenges, handy hints and a Members' area. They have also announced that for every order of £20 or more it will give a free 101 challenges guide worth £23.50. This is an excellent guide and a great support to any K'NEX activity with links into many areas of the curriculum. To get your free guide put the code KTCR onto the coupon code box in the online shop.

Free Calendar

If you haven't already done so why not download your free downloadable 2006-2007 calendar from <http://www.karenroutledge.co.uk/Freedownloadable%20Calendar.pdf>

Family Learning Week - 7-15 October

National Family Learning Week (FLW), is an annual awareness campaign promoting and supporting organisations to run FLW events across the country. The Campaign for Learning (CfL) started co-ordinating Family Learning Day in 1998 to highlight the importance of Family Learning fun for families across the country. If you still haven't planned your event or are looking for ideas download the CfL free planning guide at <http://www.campaign-for-learning.org.uk/pdf/FLW2006/planningguide.pdf>

The K'NEX Family Learning Activity Road show is booked for most of that week, but still has vacancies for Wednesday 11th and Thursday 12th. Contact Karen if you would like to host a K'NEX Family Learning activity at your school, LA or organisation.

Farmhouse Breakfast Week-21-27 January

This January HGCA (Home-Grown Cereals Authority), the organiser of Farmhouse Breakfast Week 2007 is encouraging people to get active as part of a healthy lifestyle with the theme "Make Time for It!" In addition the new Breakfast & Healthy Living Project Pack will be launched in October in conjunction with the Flour & Grain Education programme. Designed for Key Stages 2 and 3 it covers issues relating to health and nutrition for breakfast. The pack includes resources for teachers and children, plus a CD Rom. To receive your free copy, please send your details to education@hgca.com. Or check out information on the Farmhouse Breakfast Week and their other freebies on www.farmhousebreakfast.com

Activity Funding

The Association of Charitable Foundations is the UK support organisation for grant making trusts and foundations of all types. Check out their website www.acf.org.uk/linkstrusts.htm for an extensive list of funders with direct links to their websites and how to apply for funding.

Karen Routledge Education and Funding Consultant

Phone/Fax: 0191 4154090 Mobile: 07745 291718

Email: karen@karenroutledge.freemove.co.uk Website: www.karenroutledge.co.uk



[Introduction](#)

[Event Search](#)

[List of registered Organisations](#)

[Big Draw Info Sign-up \(general public\)](#)

[Print right-hand section](#)

[Campaign for Drawing Website](#)

[Amazing Space](#) at Somerset House,
London - National Big Draw Launch,
24 September 2006

Organisers only:

[Help](#)

[Organisation entry](#)

[New event entry](#)

[Event updating](#)

Welcome to the Database of Big Draw Events



[Big Draw 2006](#)

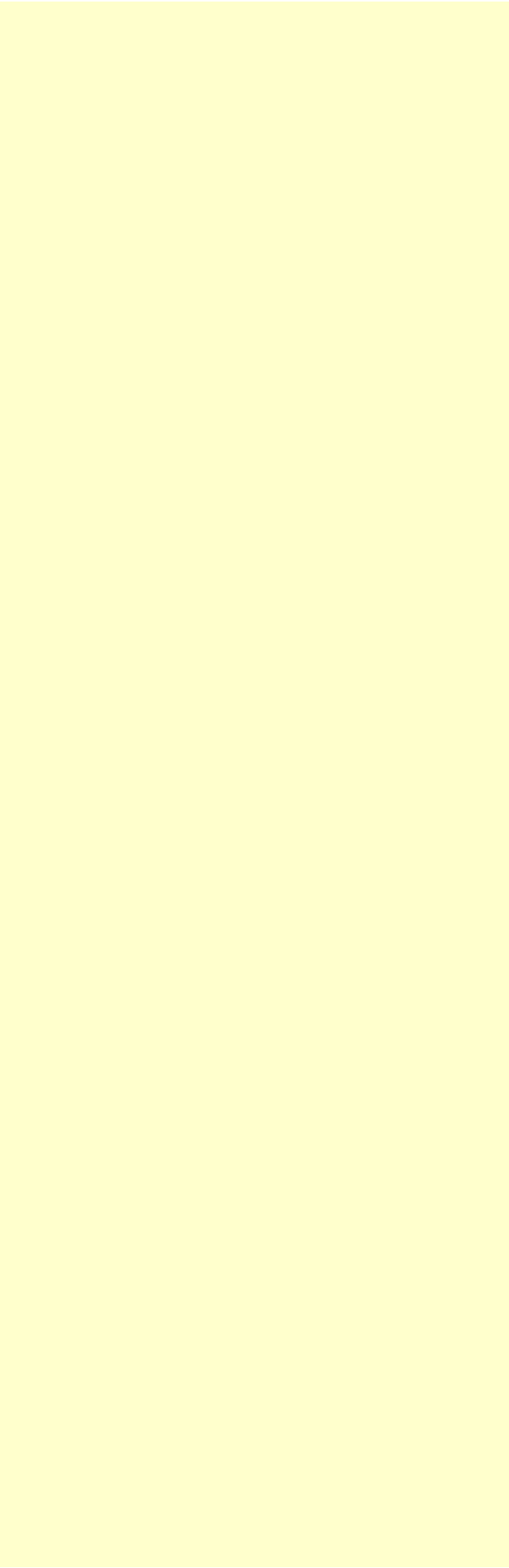
1 - 31 October

Drawing events for all ages and abilities across the U.K. To find one near you, just click on the link above.

The menu on the left

- Organisers of Big Draw events should use the appropriate links on the left hand side of this screen.
- 'The Organisation/Event registration links are for event organisers only; individuals who want to be kept informed of Big Draw developments should use the link 'Big Draw Info Sign-up' on the left. Individuals can - and are indeed encouraged to - use these pages to search for events, but are not required or expected to register here.
- Event organisers, click [here](#) for help and information on the registration procedure. All organisers should print out and read this information before initial registration.
- The "Print right-hand section" enables you to print out whatever is showing on the right at any moment.

For photos of previous Big Draw events, and for more information about dates, themes, publicity materials and funding or press advice, visit the Campaign's main website www.drawingpower.org.uk.



The Big Draw Online Database - Help for Organisers

Use the "Help" menu item on the left to return to this page at any time. A facility to print out these instructions can also be found in this menu.

How it works - Overview

The Big Draw database holds records of organisations arranging "Big Draw" events in October. The organisation details are held for administrative purposes only; it is the event details that are displayed on the website via the search facilities of the database. If your event is not in October, you may use the Big Draw logo and other publicity material, available for download from the Campaign's website (link on left), but please do not register here.

In order to add an event to the database, organisers must first register their contact details. Only after these have been submitted will there be an opportunity to submit event details. Once an organisation is registered, additional events can be added or existing details updated via this website. There is no facility to view or update organisation details online (for data protection reasons) so any changes should be submitted by email to Drawing Power (admin@drawingpower.org.uk).

Please note: All submissions to the database - organisation or event details - will be subject to verification by Drawing Power, and event details will not be viewable (or editable) on the website until this is done. This may take up to 24 hours. Please avoid using the 'Back' button after submitting your organisation or event details as it could cause your entry to fail or be duplicated.

Organisation Registration

Note that by "organisation" we mean the name of the organisation arranging an event, which may or may not be the name of the venue where an event is to take place. If you are unsure if you are already registered or the exact registration name used, please click [here](#) to view the list of names of registered organisations.

You are required to give:

- Region - this is a break-down of the UK into 12 geographical regions plus offshore/overseas. These regions reflect those used by Arts Council England and bodies such as the National Trust.
- Organisation name - please avoid using "The" at the beginning. We appreciate that in some cases it is necessary, but only in special cases such as 'The Queen's Gallery' or in single word organisations (eg The Lowry). It can be included in the venue name when registering event details, though this is inadvisable as it will be listed under T. Organisation names starting with numbers are acceptable.
- Contact name and full address of the organisation, including telephone number. These details are confidential and not available to the public.
- A school is any educational institution for pupils up to age 18. This field allows us to quickly identify for funders the number of schools taking part.

- It is important for us to identify the most effective form of dissemination of information about the Campaign, so please let us know how you heard about the Big Draw

You are also asked for, but are not obliged to give, a fax number and email address. These details are for admin purposes only and will not be displayed on the website. Email addresses are an important means of communication with Drawing Power, so please supply this if at all possible. Please note: if you do not give a valid email address we will be unable to update you on Big Draw developments. We encourage registration of organisation details with email addresses as soon as possible (event details can be entered later).

Event Submissions

After submitting your organisations' details, you will have the opportunity to add event details, for one or more events. You may choose to do this later, by using the left-hand section link 'Event entry', and selecting your organisation by clicking on the first letter/number of the name. As mentioned above, these are subject to verification by Drawing Power before you or the public will see them. You are asked to give the following details. In order to save time, event details will be auto-filled with your organisations' details as default. You must change these for events that are not held at your organisation address. Event details are also given defaults which, once again, you should change as needed. Many of these are simply filled with 'tbc' (to be confirmed) which you may change now or later, but please don't forget to change these as you finalise plans for the event.

- Region - this is simply a break-down of the UK into 12 geographical regions plus offshore/overseas. These regions reflect those used by Arts Council England and bodies such as the National Trust. This enables members of the public to search for events in their region.
- Event venue name - this may, or may not, be the same as the organisation arranging the event. Venue names starting with numbers are acceptable.
- The full address of the event venue, not of the organisation - unless these are the same. This can always be changed if you are initially unsure of the venue.
- Contact telephone number for the public. If the event is open to the public, then a venue tel no must be supplied to allow the public or journalists to ring for more information. Closed events may leave the tel no blank, but please be aware that closed events may not be included in some Big Draw publicity material, including the Big Draw Guide.
- Your website address - this will be displayed as a link, if given. This will allow the public to find a more detailed description.
- Event title - it helps if you can give all your events distinct names, even if they are only "The Big Draw 1", "The Big Draw 2", etc as this will help identify events should you wish to edit them later. Try to choose a snappy title rather than just 'The Big Draw'. As every event is a Big Draw, the title on the database need not be the main one. Use it to give the public a quick flavour of your event and to differentiate it from over all the others.
- Event description - must be restricted to 60 words.
- An indication of the intended audience.
- Date(s) of the event - to keep entries as uniform as possible, please try to use the following types of format: 'Sat 19 - Tues 22 Oct' or '17-19, 21-25 Oct' or '14 Oct 2002 - 18 Jan 2003'.
- Time(s) of event - as above, please try to use the following format: 10am-4pm.
- Normal Admission Charge - Please state whether participants need to pay the normal admission charge to the venue or not. If the normal admission charge is reduced but not free, please include

the charge in the Event Cost (field below).

- Cost of Event - The Event Cost is any charge over and above the normal admission charge (if there is one), including suggestions for donations towards costs. As people may wish to search for free events, please include this word if appropriate (e.g.: "£1.60 adults/children free").
- Category – this field is for admin purposes only and will not be visible. Select the category you feel is most appropriate (we may change this but don't worry about it). This allows us to identify the number of venues in particular categories for funders.

After submitting an event, you will be given an event registration number. It is imperative that you make a note of this number (the easiest way is to print it out using the print facility on the left) as it is your proof of event registration. You will also have the opportunity to submit further events. Events should be listed separately if they are held at different venues or if your programme varies substantially in content on different dates or times (for event titles, see above).

Once submitted, it is best to view your entry as if you are a member of the public by doing an event search. Then use the 'Edit Event' facility to add or alter any of the details. Remember to allow 24-48 hrs after registration to allow verification by the Campaign for Drawing (your changes will not be visible till this has been done).

Updating Event submissions

- Select the first letter or number of your organisation name.
- Click on the link to the correct organisation from those displayed. All events registered under that organisation, regardless of venue, will be displayed by Event Title.
- The relevant event can then be selected and amended.
- To amend more than one event use the link provided at the bottom of the screen.

Deleting events and/or organisation details

Please contact admin@drawingpower.org.uk stating clearly the event(s) or organisation you want removed from the database. Please give the name of the organisation arranging the event, the event venue and the title of any events you want removed.

Drawing Games

Have fun drawing with your family and friends

About this resource

These drawing games can be used by event organisers for Family Learning Week activities. They can also be photocopied and given to families to do at home.

This resource was produced by Flow Associates for the Campaign for Drawing and the Campaign for Learning.



The Campaign for Drawing

Patrons: Quentin Blake
David Hackney
Sir Richard MacCormac
Andrew Marr
Sir Roger Penrose
Gerald Scarfe
Poey Simmonds

About the Campaign for Drawing

The Campaign has a simple aim: to get everyone drawing. The Big Draw, the Campaign's annual October showpiece, proves that drawing can be a public activity as well as a private passion, 1000 venues across the UK, from great national institutions to village halls, join in to offer people of all ages the chance to discover that drawing is enjoyable, liberating and at everyone's fingertips. For drawing ideas and resources and to find out how you can take part in The Big Draw visit: www.drawingpower.org.uk



Drawing Games

Have fun drawing with your family and friends

Why play drawing games?

Drawing games are **great** because you can do them wherever you are – on a train, at the dentist and lots of other places too!

Drawing games are **brilliant** because you can draw but play with family and friends at the same time!

Drawing games are **cool** because you don't need to prepare much or clean up afterwards! All you need is paper and pens.

These games are by Flow Associates for the Campaign for Drawing and the Campaign for Learning. **You can find more drawing fun at www.drawingpower.org.uk**



Four tips for playing the games

Tip 1: Let grown-ups draw too. They might pretend they are too old to play games but really they want to join in. Let them have some fun.

Tip 2: Everybody is an artist. So if someone draws differently from you it isn't wrong.

Tip 3: Wrong is sometimes right! Some of the best artists in the world think their best drawings came from making 'mistakes' that didn't turn out to be mistakes at all. So, if you think you've gone wrong, maybe you haven't. Keep drawing!

Tip 4: If babies and toddlers can't understand a game, give them a very large piece of paper to sit on, some chunky crayons and let them have a go in their own way. You'll be surprised by what they come up with!

Game 1: What do you make of my squiggle?

Number of players: 2 or more.

What you need:

- *Pieces of paper*
- *Pens or pencils*

This game is about making something out of nothing.

Step 1: Everybody makes some marks on their paper. Don't think what they might be, it's just a squiggle!

Step 2: All pass your squiggle to the person next to you and say: "What do you make of that?!"

Step 3: Look at the squiggle and simply turn it into something. Rotating the paper can help set your imagination free.

Game 2: Three part people!

Number of players: 3 (or 4).

What you need:

- A piece of rectangular paper for each player
- Some coloured pens or pencils
- Sticky tape.

This game is all about working together to draw funny looking people.

Step 1: Have a chat about what sort of character you are going to draw together. It can be any type of person! A mermaid, a strongman, a clown, someone famous, a policewoman, a spaceship captain, anything you like – but you must all agree.

Step 2: Each of you is going to draw a different part of the person so choose who is going to do which bit. The three parts are: head, body and legs. (A fourth player could do a hat or feet.)

Step 3: Draw your part on your own piece of paper. Take care and think about patterns and details. Try to keep what you are drawing hidden from the other players!

Step 4: When everyone has finished tape the parts together and admire your handiwork!

You'll probably want to make a whole parade of these funny people. Why not give some of them weird and wonderful names too?



Your family and friends will love receiving these postcards. They'll be completely original works of art that nobody else will have!



Game 3: Make your own postcard

Number of players: Any

What you need:

- Pens
- Stamps
- Blank cards

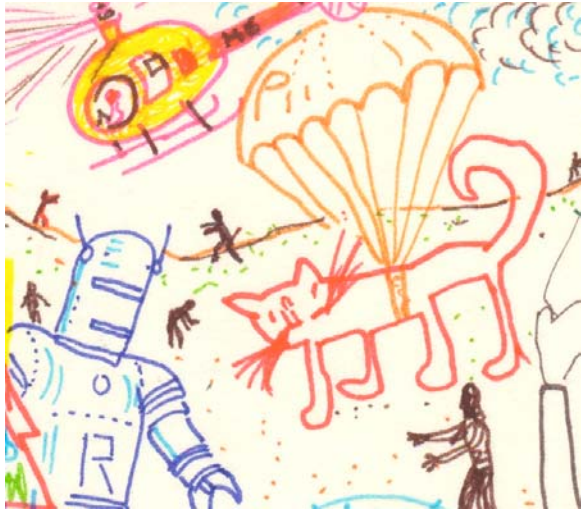
This game can be played when you go on a trip.

Instead of buying picture postcards why not:

- draw the most amazing things you see?
- or put yourself in the scene?
- or draw a comic strip of your day?

...or all these things?

This is a drawing game, a hiding game and a finding game all in one.



Game 4: Alphabet landscape

Number of players: 2 to 6.

What you need:

- One sheet of paper, but not too small as you'll need space for a lot of different drawings
- Some coloured pens or pencils
- 20-30 minutes

Step 1: The first person to take a turn draws something beginning with the letter A. As part of the drawing they must also hide the letter 'A' somewhere in their picture.

Step 2: On the same piece of paper the next person draws something beginning with B and must also hide the letter 'B' in that drawing.

Step 3: From now on players take turns drawing things that begin with the next letter of the alphabet, each including a hidden letter. As your artwork grows, try to make it work as a whole. For instance, if the first player drew an apple then perhaps the second player might draw a baboon holding the apple. 'H' could be a chance to add a horizon.

Step 4: When you've reached X give your finished scene to someone else and ask them to find the whole alphabet.



Questions about eyes to inspire more drawings:

- Do both eyes have to be the same?
- Can you draw a creature with more than two eyes? Or one?
- How would you draw a creature that is winking at you?

Game 5: What a good eye dear!

Number of players: 1 or more

What you need:

- Thick paper or card.
- Pen or pencil
- 'Googly eyes'. Available in toy shops and craft shops
- Glue

Step 1: Stick two eyes on your paper or card.

Step 2: Decide as a group whether you're going to draw monsters, animals, each other, aliens or princesses. Use your imagination. As long as it has eyes you can draw it!

Step 3: Move your finished drawings around so that the eyes move.

