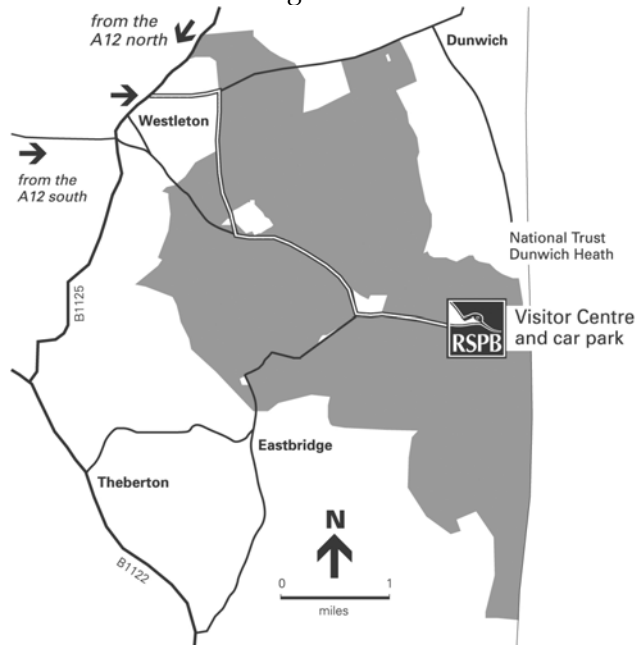


Where is RSPB Minsmere Nature Reserve?

Follow the brown tourist information signs from the A12



Minsmere is a site of international conservation importance. As one of Britain's premier nature reserves it is a stimulating and memorable location for environmental studies.

- All environmental education visits are led by our trained field teachers
- All programmes are carefully designed to meet the requirements of the national curriculum

The RSPB works for a healthy environment rich in birds and wildlife. It depends on the support and generosity of others to make a difference.

Registered charity number 207076



Wake up! to Wildlife



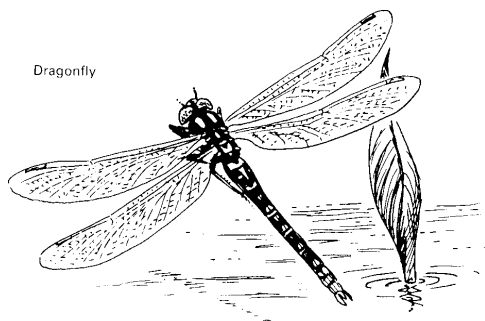
Minsmere Nature Reserve's
Environmental Education
Programmes

All programmes led by trained RSPB field teachers

Teaching Programmes

The RSPB has developed two environmental education programmes - **First Nature** (for 5-8 year olds) and **Second Nature** (for 8-12 year olds), both have been carefully linked to curricula requirements and designed to meet the needs of young people. The programmes are linked to Key stages, 1, 2 and 3 of both the Science and Mathematics curricula and also tie in with aspects of the Geography and English curricular. We also run a special '**Avocet**' programme please ask for further details.

For example, visits can include the following studies:



Dragonfly

Bird Adaptation

Pupils develop knowledge and understanding of:

- food chains, related to natural history
- variety of bird life, using binoculars to identify birds
- how birds have evolved to exploit food supplied in specific habitats
- identification techniques using a key
- management of habitats to improve the environment for wildlife
- migration, how birds react to seasonal change

Habitats

Pupils develop knowledge and understanding of:

- succession and the management of habitats to benefit wildlife
- the concept of habitat
- how birds are adapted to suit distinct habitat types
- identification techniques using keys

Arrangements for groups visiting Minsmere

Age group

- suitable for pupils in years 1 - 9 (aged 5 - 14 yrs)
- we also welcome AS and A level groups by prior arrangement and programmes will be tailored to individual requirements

Availability

- visits are available on Monday, Wednesday, Thursday and Friday

Resources and facilities

- all necessary equipment will be provide (including clipboards and worksheets, but excluding drawing materials which should be supplied by the school). Children should come suitably dressed for outdoor study with stout shoes/wellingtons and warm waterproof clothing; sun hats and suncream in the summer
- the reserve has coach parking facilities, education room, toilets, shop, picnic area, pond dipping platform and observation hides

bittern

Cost

- the cost per child is £3.50, a minimum group fee (£55) will be charged to cover field teachers' time

Booking details

To book or for further information please phone:

Lead Field Teacher - June Smith

Minsmere Visitor Centre

Email:



Tel: 01728 668596

Tel: 01728 648281

minsmerer@rspb.org