

Norfolk Farm Education Link

Newsletter – Spring 2003

We are really pleased at the number of schools who are visiting farms either for the first time, or who are coming back after an absence. As editor of the newsletter, I am particularly pleased when the work of children is sent with the claim form for the travel grant. We do like there to be a good proportion of children's work in the newsletter, and we can only do this if we receive it in the first place! Continuation of the **travel grants** from the **Clan Trust** requires supporting evidence of the educational value of these visits. Another plea, too! Digital photos need to be emailed to su@linaria.co.uk if we are to use them. Conventional photos can be scanned successfully. We expect lots more students visiting in the summer term – we look forward to hearing from them!

Food, Farming and Countryside Loan Resources

Since last September, we have extended our loan service to Norfolk schools. Not only are the existing 10 Key Stage 1 & 2 loans even more comprehensive than last year, but we now have 20 Key Stage 3/4 resources boxes available for Middle Schools and High Schools supporting four subject areas – Biology, Citizenship, Food Technology and Geography. Loans contain a wide variety ranging from books, videos, CDs, samples, games, teaching packs, background information, posters, models and audio tapes.

By popular request, we shall soon be separating out the **Nursery** resources from the KS1 loans to cater specifically for the needs of these two age groups. This will require some duplication to ensure cross-curricular materials cover the full ability range at each level. Another advantage will be that we will be able to offer our loans to more schools across the county to satisfy the demand. There will be five of each Nursery, KS 1 and KS 2 boxes for Autumn 2003.

Whilst some primary schools request the full range of comprehensive teaching and learning materials for whole school projects at KS 1 & 2, individual class

teachers sometimes only need a smaller, very specific loan.

Our loans consist of the following areas of resources, which can be ordered separately (approximate value of a full loan is £1500):

- Farm Animals (including a mini farm for Nursery and KS1 only)
- Farm machinery
- Crops and plants
- Woodland
- Countryside and Conservation
- Food, Health
- Fiction books
- Incubator and Brooder

All the materials we loan have been suggested through our 1:1 teacher evaluations and funded by local and national businesses through sponsorship or donations to our charity NEICG.

Bookings now stretch ahead to 2005 and you are advised to book early to avoid disappointment. Loans charges range between £10–£35 per half term or £2–£5 a week. If you are unable to collect your loan from Norwich, delivery or collection charges range from £5–£15, depending on distance.

For enquiries or to book your Loan Resource

Marilyn Farnham-Smith evenings: 01603 471990 or marilynfs@boltblue.com

What's on offer

- Free visits to **Norfolk Farms** and trial use of **Loan Boxes** – see contacts. (Subsequent loans at very reasonable rates.)
- Free **Special Activity Weeks** and farm visits to Easton College at very modest prices; and
- Free access to the **Food and Farming Resource Centre** at Easton College – ring **01603 731257** and ask for **Moya Myerscough**, Head of Schools' Liaison to book an appointment.
- The **Women's Food and Farming Union** offers free speakers for Primary Schools – contact **Felicity Daniels** on **01493 730338**.
- **Food and Farming Challenge** (NEICG) is a free opportunity for schools to work with farming-linked industry – contact **Roger Stanton** on **01603 622991**.
- Free visits to **Linking Environment and Farming (LEAF)** demonstration farms within Norfolk at Raveningham and Morley. To arrange a demonstration please contact **Roly Puzey** at the National Agricultural Centre, Stoneleigh, Warwickshire CV8 2LZ, Tel: **024 7641 3911**.



Visits for School Groups to Easton College

Curriculum-based farm and countryside visits

Geography, Science, Citizenship, Maths, English, Art, DT

At Easton College we have:

- A 280ha mixed farm with dairy cows, sheep, poultry and – new this year – a deer park with a small herd of fallow deer. Crops include wheat, barley, sugar beet and maize
- The farm estate is managed for conservation
- The Schools Barn (including a heated classroom) teachers resource area, toilets, woodland garden (with red squirrel enclosure), pond and picnic area

All visits must be pre-booked and groups are taken round by experienced guides. We are happy to plan your visit programme with you so it matches curriculum needs.

Teachers are welcome to come here on a pre-visit to finalise planning.

There is a charge of £1 per child.

A travel grant of up to £50 per school is available for most visits here from the Clan Trust. Details sent when you book.

For further information or to plan a visit

Moya Myerscough, Head of Schools Liaison, Easton College, Easton, Norwich NR9 5DX. Tel: 01603 731257 e-mail: schools@easton-college.ac.uk

Contacts

Loan Boxes and Farm visits:

Marilyn Farnham-Smith 01603 471990
marilynfs@boltblue.com

Easton College:

Moya Myerscough 01603 731257
schools@easton-college.ac.uk

Acknowledgements

The Editor thanks all those who have given their time to contribute to this newsletter.

NFEL is particularly grateful to the farmers who welcome visitors to their farms.

Please send comments, articles, photographs and pictures resulting from farm visits to the editor at any time for inclusion in the next issue (to the address on the back page – by e-mail if possible).

Easton Food and Farming Centre

Comments from the pupils at
Thomas Bullock Primary School

- I liked seeing all the animals, especially the chicks.
- I found all the leaves in the wood and garden!
- I got dizzy looking up at the trees in the mirror.
- Didn't the trees look funny.
- It felt like you were floating above the ground.
- I liked the milking parlour, but we didn't see it working.
- I'm glad we didn't have to go in the sheep dip!
- It was so nice, we had a picnic outside.
- I wish we could have fed the animals.
- I liked the sheep best.
- Mrs Billings wanted one of the chicks!
- When can we go again?

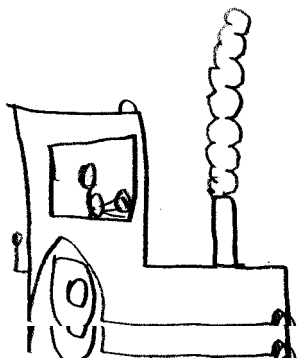
Mile Cross Middle School visit Easton College Farm

We took 50 children to Easton College Farm. Previously in school we had been learning about life cycles in science. The trip was immensely valuable to the children because we had learnt about animals and reproduction in the classroom. When we went to the farm, the children could see the animals for themselves. We saw the difference between eggs and chicks, and between lambs and sheep.

As well as what we had learnt in science, the visit was also useful in other ways: the children experienced first hand what it was like on a working farm. They found the milking parlour really fascinating. Many children didn't realise that milk came from cows and that the cow needed to have a calf before it could produce milk.

The children were surprised that the sheep were so timid. We looked at a fleece and found out that the fleece contains lanolin.

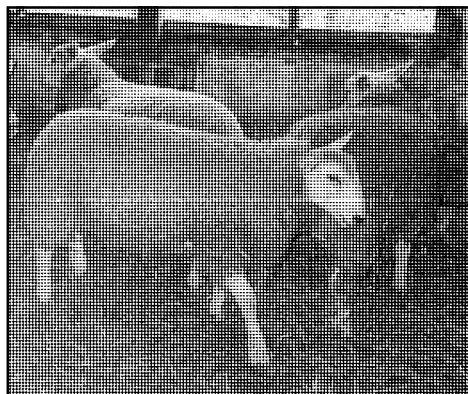
All the children really enjoyed the visit. We would not have been able to take so many children if we had not had the coach subsidised by the Clan Trust. It was a very enjoyable day.



Tractor by Harry Green, Browick Road Infant School

Dereham St Nicholas Junior School visit to Easton College

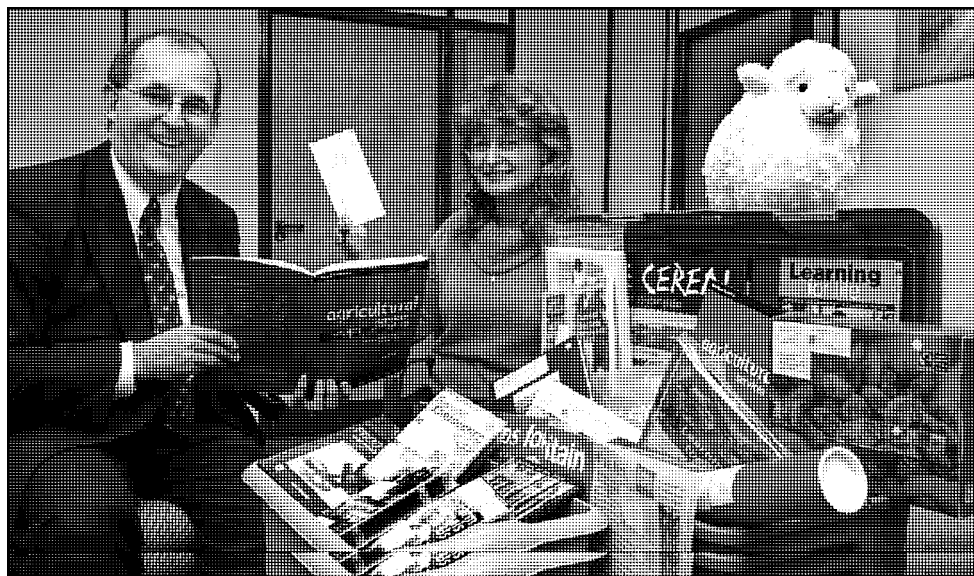
We visited the farm in June as part of our science and geography work. A guide showed us round the farm. We saw chickens, cows and sheep. The turkeys were kept in a large room, which is artificially lit and is kept at a constant temperature. In the room was a chair which some of the turkeys were sitting on! There were 350 turkeys in the room. It did smell a bit!



We saw sheep having their hooves trimmed. We saw some sheep's tails which had been docked.

During the walk we identified some of the different crops such as wheat, maize, barley and grass. Some of the grass is made into silage which is fed to the animals.

In the afternoon we went into the Conservation Area, where we used quadrants to mark an area of meadow. We counted the different plants and tried to name them. We repeated this in the pasture and found there were not as many different kinds of plants but there were lots of different types of grass, which we were unaware of. Overall we had a very exciting day and discovered many interesting facts about the farm and for the need to look after the countryside.



Colin Stocker, Nat West Senior Agricultural Manager, hands over cheque for £2000 as sponsorship for the KS3/4 Loan Boxes to Marilyn Farnham-Smith

Bignold Middle School visit to Easton College

Easton College was a really good trip for the school. The farm walk and talk was really interesting. We saw the fields, sheep, chickens, broiler turkeys, cows and the milking which was really amazing. We got to see some silage which was gross. We got back from that and then went back to have lunch. Then we went to identify some trees which was alright. I was given a fresh carrot. Sadly it was home time. What a great day out at the Easton College.

Adas Sofroniou

My best bit was the bit where we had to guess what sort of tree was what. The bit I didn't enjoy that much was the farm walk. I didn't enjoy it because I wasn't that keen on the smell. It got right in my mouth at times and I didn't enjoy it one little bit!

Alice Stannard

I liked going to the farm because we got to hunt bugs and I caught two millipedes. The walk was fun because we got to see the turkeys and how the cows were milked.

Ethan Dunford

Reedham Primary School visit to Raveningham Hall Farm

Our Key Stage 1 children had a very enjoyable and valuable day at Raveningham, aided by good weather.

We had a 'guided tour' for the most part, looking at farm machinery, hurdle making, the herb garden, and chickens. At midday we picnicked in the woods: there was a ride from Raveningham to the wood in a large truck. The children enjoyed this and were particularly interested in the herb garden. Lady Bacon had a lot of information to impart about medicine in Tudor times. We brought herbs back to school and identified them. It was an excellent day.

Jan Morrell

Events at Norfolk Showground

Schools Art Competition 2003

The Royal Norfolk Agricultural Association Schools Art Competition sponsored by the Clan Trust is entitled **Norfolk Farming in Style**. This is intended to give children the opportunity to study the art of professional artists, who have depicted aspects of farming in their work and then, for the children to produce a piece of art in the style of their chosen artist. Alternatively children may use their own style, without reference to the existing work of any professional artists. Entries should not exceed max A3 or be three-dimensional. First prize for each of the 5 age group categories will receive £100 for the school and £30 for the child and the runners-up in each category will receive £75 for the school and £10 for the child.

- Entries close **28 March 2003**.
- Artwork will be on display at the **Spring Fling** on Wednesday 16 April.
- Winning entries will be displayed in the Schools Marquee at the Royal Norfolk Show 25 & 26 June 2003.
- Prize giving at the Royal Norfolk Show.



Spring Fling

Wednesday 16 April 2003

A fun learning experience for children during the school holidays, with hands-on activities aimed at the 4-12 year age range. Discover more about, Food, Farming and the Countryside. An adult must accompany children. Most stands undercover but sensible footwear and clothing required for the Woodland walk.

Entrance tickets available in advance only at £3 each, a light lunch is included in ticket price. Gates open 9.30 am.

Details will be advertised in the press and on www.royalnorfolkshow.co.uk.

Poetry Competition

The RNAA is holding a Poetry Competition for schoolchildren entitled **Tasty Poems** for Key Stages 1, 2 & 3. Children have the opportunity to write a poem about any aspect of Food and Farming. Entries should be hand written on A4 and may be illustrated. First prize for each Key Stage will receive £100 for the school and £30 for the child and the runners-up in each category will receive £75 for the school and £10 for the child.

- Entries close **16 May 2003**.
- The winning entries will be displayed in the schools marquee at the Royal Norfolk Show on 25 & 26 June 2003.



Royal Norfolk Show

25 & 26 June 2003

School Trails sponsored by **Norwich Union** – take this opportunity to plan a worthwhile educational day using the extensive variety of resources available at the Show. Each trail gives the opportunity for follow-up work at school and linking to National Curricular themes. Trails are graded for different abilities ranging from Reception/Key Stage 1 to Key Stage 3.

School parties enjoy a discounted rate of £2 per school child. These entrance fees can be reclaimed by returning completed school trails.

Choose from the following Show Trails:

- **Key Stages 1 & 2**, Countryside & Conservation, Livestock (Horses, Cattle, Sheep, Pigs, Goats, Small Livestock) Norfolk Beekeeping, Woodland Crafts, Woodland Nature, Farming in Norfolk.
 - Science and Mathematics based Trails
- Key Stage 3.**

Norfolks' own Environmental Education Service

Supports teachers with Environmental Education

Susan Falch-Lovesey is Head of Norfolk Environmental Education Service. The Service also includes Norfolk's two LEA Field Study Centres: **Holt Hall** and **Wells Field Study Centre**.

The Norfolk County Council's Environmental Education Service aims to support schools to develop their ethos, policy and practice, towards becoming more environmentally focused and to provide a framework that will work for all schools, whatever their starting point and individual requirements.

The County Council as Local Education Authority, recognises the importance of offsite days and residential visits to a young person's educational experience and the way such an experience can positively influence a pupils attitude to learning. The opportunity to raise achievement by engaging pupils in countryside matters and through the environmental context is an exciting one.

Finding the right support for your school, however, can be very time consuming, thus the Service has been working in partnership with many environmental and countryside Education providers to promote high quality opportunities both within school and beyond.

Do you need to access support for environmental projects? This new Environmental Education Service website could help you:

www.esinet.norfolk.gov.uk/envawards

It will give you information about the Norfolk Schools' Environmental Awards – an ideal opportunity to submit the work you have been doing and win a cash prize and recognition for your school.

It also details support for work on waste, grounds, growing and biodiversity, energy and buildings, water, transport, community and global perspectives.

With the very best national website links, local support contacts and relevant grant opportunities it is worth a visit.

For further information

For more support on Environmental Education or Education for Sustainable Development please contact

Susan Falch-Lovesey,

Head of Environmental Education Service,

Tel: PDC 01603 433276 or

susan.falch-lovesey.edu@norfolk.gov.uk

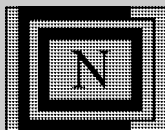


For further information

Linda Rose 01603 731966 or linda@royalnorfolkshow.co.uk www.royalnorfolkshow.co.uk

NFEL

Norfolk Farm Education Link (NFEL) is a sub committee of **Norfolk Education Industry and Commerce Group (NEICG)** which aims to promote



business awareness and education for students in schools and colleges in and around Norfolk. It is a charity governed by a group of Trustees who are prominent local business people.

Registered Charity No. 284518

NFEL Aims

- To promote an appreciation of the relevance of farming in society; • To assist teachers to establish a network within farming and allied industries;
- To enable children to study the complexities of modern farming; • To facilitate the understanding of life in the countryside;
- To provide opportunities for those working in agriculture to have a better understanding of education today and discover how the needs of Society are best met within the constraints of our present education system; and
- To establish links with other national and local organisations which share similar aims.

NFEL members represent

- Norfolk Farmers;
- Norfolk Schools;
- Country Landowners Association;
- Easton College;
- Norfolk Education Committee;
- Norfolk Rural Life Museum;
- Eastern Counties Newspapers;
- National Farmers' Union;
- Women's Food and Farming Union;
- NEICG.

Ken Leggett (Chairman)

NFEL Newsletter

Editor

Mrs Su Summers
1 St Clements Hill
Norwich NR3 4DE
Tel: 01603 412714
E-mail: su@linaria.co.uk

Additional Copies from

Ken Leggett: 01603 408823

Design by **ISData Ltd**

Sixth-Form Student Day – Holt and District Farmers' Club



Another intensive day was held on 10th July 2002 at Frogs Hall Farm, Aylsham by kind permission of William and Nick Youngs. Students were taken on a tour with seven talks at different 'stations' covering different aspects of farming today.

The day was made by excellent organisation: the willingness of the farmers and associated persons to stand up and share what they have learnt over the years to an audience of strangers, the stewards who kept an eye on things and the

walkers who kept us to time and asked pertinent questions of the talkers to help our understanding and were a point of constancy for the students as we went around the tour.

It was an excellent educational experience. The students not only learnt an awful lot that is relevant to their course, but also a lot that will help them now, and in future years understand the farmer's role both in food production and stewardship of the countryside.

Phil Loveday, Smithdon High School

A similar event will be held this year on Wednesday, 9th July 2003 at Hall Farm, Colby by kind permission of Bill and Mary Poortvliet. Contact Ken Leggett on 01603 408823 or ken@leggettk.fsnet.co.uk

Heigham Park School at Raveningham Hall Farm



Sixty Year 3 children, plus teachers and parents, spent a day at Raveningham Hall Farm. They began by looking at the wood growing and cutting area, then progressed to the yard where the machinery was stored. The children were

fascinated by the enormous combine harvester! The rest of the day included visiting a field which had specially-planted wild-flower margins, looking at the herb gardens and the chickens, and having a picnic in the woods.

Raveningham Farms continue to welcome school groups

We are delighted to show school children of any age around the various enterprises that are within the estate boundaries and always look forward to welcoming them. For further information contact Buff Housman on 01508 548322.