



Royal Norfolk Agricultural Association

Schools News

Autumn 2003

Schools Art Competition

kindly sponsored by
The Clan Trust

Don't miss the opportunity to win prizes for both the school and child in our 2004 Schools Art Competition.

There are five age group categories from Reception to Year 10. First prize for each category will receive £100 for the school and £30 for the child with the runners-up in each category receiving £75 for the school and £10 for the child. The competition will be entitled "**Norfolk Farming in Style**".

This is intended to give children the opportunity to study the work of professional artists and then, for the children to produce a piece of art on any aspect of locally produced Food, Farming and the Countryside, in the style of their chosen artist. **Alternatively children may use their own style**, without reference to the existing work of any professional artists.

The closing date for entries is 12 March 2004. Look out for entry forms through the Schools County post or contact Linda Rose telephone 01603 731966.

The following competition winners for 2003 were presented with prizes at the Royal Norfolk Show.

Reception, Years 1 & 2

Winner - Samantha Weston, Wood-Dene School

Runner-up - Ruby O'Grady, Bawdeswell Primary

Years 3 & 4

Winner - Kayley Melton, Hockering Primary

Runner-up Laura Smithson, Hockering Primary

Years 5 & 6

Winner - Nathan Bedwell, Glebeland CP School

Runner-up - Lucy Rand, Brisley Primary

Years 7 & 8

Winner - Hannah Weston, Wood-Dene School

Runner-up - Victoria Napthen, Horsford All Saints Middle

Years 9 & 10

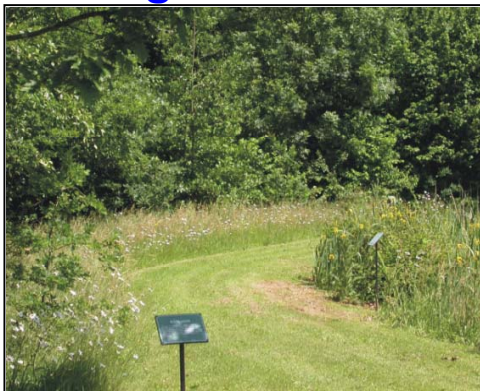
Winner - Lewis Roberts, Cliff Park High

Runner-up - Shaffia Khan, Cliff Park High

4,441 School Children visited the Royal Norfolk Show

The 2003 Royal Norfolk Show welcomed 4,441 school children and many took part in the school trails, kindly sponsored by Norwich Union. The exhibits in the Schools education marquee demonstrated a range of work by schools on Food, Farming and the Countryside as part of the national curriculum. If your school would like to be considered for participation in our Schools marquee at the Royal Norfolk Show please contact Felicity Daniels, Assistant Head Steward telephone 01493 730338.

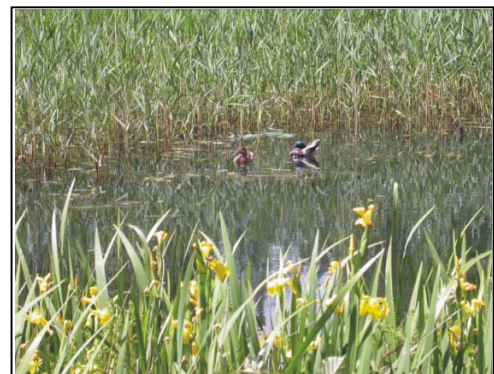
Did you know you can visit The Norfolk Showground FREE of charge



Schools are invited to bring organised parties of children to use the Woodland and Conservation areas for educational activities.

- Guided Tours can be arranged.
- Tree and Wildflower identification.
- Pond dipping.
- Undercover meeting area.
- Hard roadway system for coach parking.
- Toilet facilities.

To arrange a visit please telephone Linda Rose 01603 731966 or email schooltrails@royalnorfolkshow.co.uk.



DIARY DATES

SCHOOL ART COMPETITION entries close 12 March 2004

SCHOOL POETRY COMPETITION entries close 2 April 2004

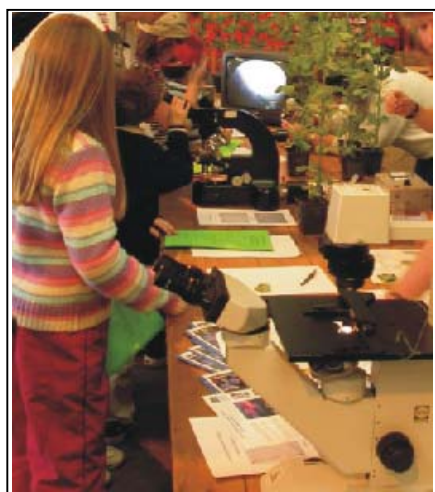
SPRING FLING 6 April 2004

ROYAL NORFOLK SHOW 30 JUNE & 1 JULY 2004

School Trails - Royal Norfolk Show 30 June & 1 July 2004



Spring Fling Tuesday 6 April 2004



Come along and join in the fun, learn more about Food, Farming and the Countryside at the 2004 Spring Fling.

This popular event takes place in the School Easter holidays. Hands on activities aimed at the 4-14 years age range. An adult must accompany children. Most stands are under cover and sensible footwear and clothing is required for the Woodland Walk. Details will be advertised in the press and on our website www.royalnorfolkshow.co.uk



Food & Farming Challenge

The Food and Farming Challenge provides an opportunity for secondary school pupils to provide solutions to genuine problems experienced by organisations involved in food, farming or the countryside. The pupils work in groups of perhaps 4-6, over a number of weeks, research the problem and then present their solutions and suggestions to the Challenge Setter. There is a competitive element where those students with the best solutions present their work to a panel of judges and then display the work at the Royal Norfolk Show. Any school interested in participating in the scheme this year should contact Roger Stanton at NEICG on 01603 622991 who will be pleased to discuss the type of Challenge to suit your particular Curriculum needs.

Royal Norfolk Show 30 June & 1 July 2004 - School Trails kindly sponsored by Norwich Union

School parties visiting the Royal Norfolk Show enjoy a discounted rate of £2.00 per school child these fees can be reclaimed by returning completed school trails.



To book your
coach well in
advance

Trails will be available for Key stages 1, 2 and 3 on Countryside & Conservation,

Woodland Craft,
Woodland Nature,
Livestock, Beekeeping,
Science & Geography,

linked to the national curriculum. School Trail packs will be available May 2004. Look out for entry forms for school parties wishing to visit the Royal Norfolk Show in the County post or email: schooltrails@royalnorfolkshow.co.uk.



Schools Poetry Competition

kindly sponsored by Reeves and Neylan

For the first time this year we ran a poetry competition and were delighted with the response receiving a total of 291 entries. Prizes were awarded to the following:

Key Stage 1

Winner - William Dodds, Brancaster Primary

Runner-up - Henry Tidd, Brancaster Primary

Key Stage 2

Winner - Suzanne Ribbands, West Flegg Middle School

Key Stage 3

Winner - Alicia Audsley, Wood-Dene School

Runner-up - Christian Thorley, Wymondham College

The competition will be repeated for 2004. It is intended to give children the opportunity to write a poem about any aspect of Food, Farming and the Countryside. There will be three categories, Key Stages 1, 2 and 3. First prize for each Key Stage will receive £100 for the school and £30 for the child with the runners-up in each Key Stage receiving £75 for the school and £10 for the child.

Look out for entry forms through the County Hall post. **Entries Close 2 April 2004.**

Norfolk Farm Education Link offers schools £1000s of Loan Resources for Teachers!

Loans are available **NOW** if you need to raise awareness through a food, farming and countryside perspective:

Key Stage 3 /4 subjects: Biology, Citizenship, Food Technology & Geography
Nursery, Key Stage 1 & 2 Cross-curricular loans
Incubators and brooders

For details contact: Moya Myerscough, Easton College, Easton, Norfolk NR9 5DX
Tel: 01603 731257 email: schools@easton-college.ac.uk



Schools Department

Opportunities for schools at Easton College:

- A 245 ha mixed farm - dairy cows, sheep, poultry and deer; crops - barley, wheat, maize and sugar beet; woodland and field margins managed for conservation
- Schools Barn with heated classroom and toilets, attached woodland garden (with red squirrel enclosure), conservation areas, pond and picnic area

All visits are pre-booked and include guided tours of the farm. New programme of visits linked to the National Curriculum

Contact: Moya Myerscough, Head of Schools Liaison, Easton College. Norwich NR9 5DX
01603 731257, e-mail: schools@easton-college.ac.uk

For further information contact Linda Rose, Tel: 01603 731966
or email schooltrails@royalnorfolkshow.co.uk

ROYAL NORFOLK AGRICULTURAL ASSOCIATION

Registered Office as above. Company Limited by Guarantee No. 1817702. Registered Charity No. 289581