

Norfolk Farm Education Link

Newsletter – Autumn 2003

Welcome back to another school year with all its challenges! We have had a glorious summer, with many schools making farm visits, but please don't forget that the farming year goes on throughout the year. Why not make an autumn or winter visit as a contrast?

Secondary colleagues must feel that this newsletter is not for them, it being dominated by First and Primary schools. I would be so pleased to hear from more secondary schools who have made use of the loan boxes, or who went to the sixth form day, or took part in the Food and Farming Challenge. Perhaps a student could be prevailed upon to review these activities. I'm waiting to hear from you!

The **Clan Trust** continues to support schools by providing travel grants towards the cost of coaches for farm visits. Make sure your school is a beneficiary during this school year.

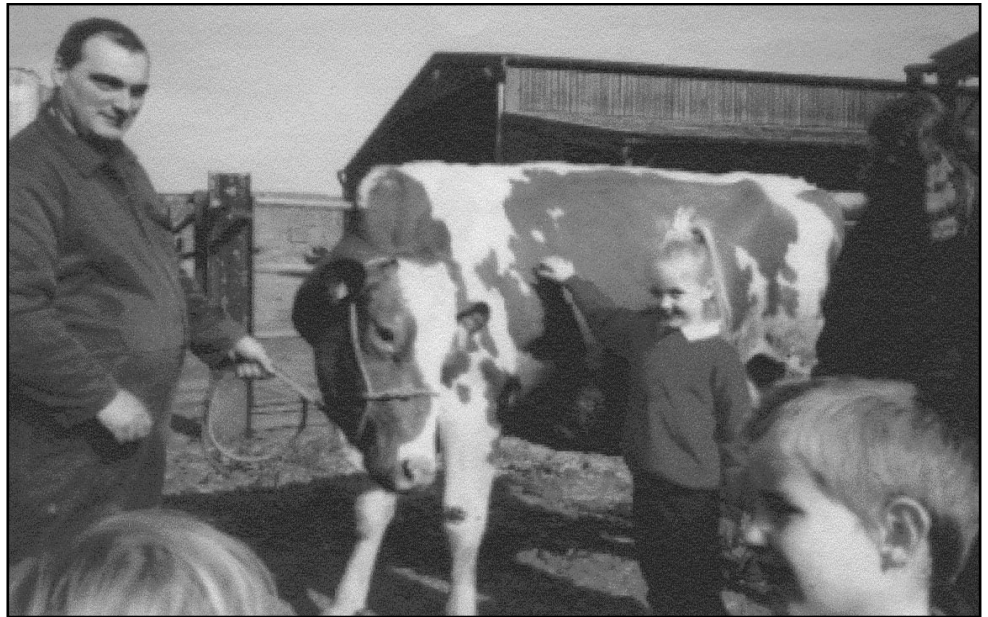
Tuckswold First School at Intwood Farm, Cringleford

We were lucky; the day when Year One went to Intwood Farm dawned bright and sunny, continuing the weather pattern of the previous week. I had been concerned about wet weather as most of my class do not own Wellington boots, and I know what rain can do to farmyards, especially those used by over a hundred cows. The 33 children and accompanying parents had been excited for days. Most of them, coming from an inner city local authority housing estate, had never visited a farm before. A couple of children were scared of this great unknown, but were thankfully persuaded to come.

Following a very successful whole school project on 'The farm' it had been decided that the whole school should be given the chance to visit a farm.

Julian Darling and the team of Intwood Farm went to great lengths to ensure that the structure, timing and safety of the visit was well thought out. Seven cows were kept back from the morning milking routine, and children were taken in three groups into the milking parlour to experience 'milking', whilst the others explored the farmyard, meeting calves and cows, gazing excitedly at tractors, and handling different cattle foods.

With the milking over, Trevor, the man in charge of the cows, brought out his show



cow for the children to cuddle; an experience the children won't forget for a long time. After a quick trip in the coach down a little farm lane to see the heifers and the bull, it was back to school for milk time. The children now knew all about the drink in the little paper cartons.

Apart from gaining an understanding of that part of their food chain, the visit gave

so much more to the children. Seeing farms on television or reading about them in a book does not give the children the feel, the smells, the sounds, of a farm or the animals themselves. The awe and wonder, the excitement, the engagement of all the senses all combined to give the children a very rich educational, personal and spiritual experience.

Carol Champion

What's on offer

- Free visits to **Norfolk Farms** and trial use of **Loan Boxes** – see contacts. (Subsequent loans at very reasonable rates.)
- **New programme** of National Curriculum linked farm and countryside visits; and free **teacher pre-visits** and use of resources in the Schools Barn; Easton College Farm Information Pack on sale (modest price to cover photocopying costs) at Easton College
- The **Women's Food and Farming Union** offers free speakers for Primary Schools – contact **Felicity Daniels** on **01493 730338**.
- **Food and Farming Challenge** (NEICG) is a free opportunity for schools to work with farming-linked industry – contact **Roger Stanton** on **01603 622991**.
- Free visits to **Linking Environment and Farming (LEAF)** demonstration farms within Norfolk at Raveningham and Morley. To arrange a demonstration please contact **Roly Puzey** at the National Agricultural Centre, Stoneleigh, Warwickshire CV8 2LZ, Tel: **024 7641 3911**.



Contacts

Farm visits:

Marilyn Farnham-Smith 01603 471990
marilyn@pollywigglecottage.co.uk

Easton College and Loan Boxes:

Moya Myerscough
Head of Schools Liaison 01603 731257
schools@easton-college.ac.uk

Acknowledgements

The Editor thanks all those who have given their time to contribute to this newsletter.

NFEL is particularly grateful to the farmers who welcome visitors to their farms.

Please send comments, articles, photographs and pictures resulting from farm visits to the editor at any time for inclusion in the next issue (to the address on the back page – by e-mail if possible).

We have had a very busy spring and summer and have been delighted to welcome over 1500 children and their teachers to the Schools Barn for farm and countryside visits.

We are very excited by the developments here at Easton this summer as our new Jubilee Building is finished, the new pig unit is built and the fallow deer have had their first fawns.

Easton College Farm and Countryside Curriculum-Linked Visits for Schools 2003/04

Visit to the College Farm (KS 1 2 3 4)

Max group 40 + adults £1.50 per child
Guided walking tour of the livestock units on the college farm. Allow two hours. Barn is usually available for lunch and group organised activities afterwards.

Norfolk Farming and Food (KS 1 2)

Max group 40 + adults £2.00 per child
Guided walking tour of the livestock units with the emphasis on the foods produced on the farm. After lunch activity in the Barn based on food in the children's lunch boxes which might have come from Norfolk farms.

The Farming Business (KS 2)

From March 2004

Max group 40 + adults £2.00 per child
Guided walking tour of the livestock units with the emphasis on the inputs, overheads and produce of the farm. After

lunch activity in groups in the Barn to find out what it costs to produce food we eat every day.

Living and Growing (KS 1 science)

March to May

Max group 30 + adults £2.00 per child
How do plants and animals grow? Half the day is spent on the farm looking at the young animals and half is spent sowing seeds and finding out which plants need to grow well.

Habitats (KS 2) Sept, Oct and March to July

Max group 30 + adults £2.00 per child
Surveying and recording in varied habitats including pond, field and woodland.

Woodland in Winter (KS 1 2) Oct to Jan

Mini-bus groups only £2.00 per child
Trees, leaves, bark, seeds. Using the college woods and arboretum. Observing, recording and art and craft.

For further information and bookings

Moya Myerscough, Head of Schools Liaison, Easton College, Easton, Norwich NR9 5DX
Tel: 01603 731257 Fax: 01603 741438 schools@easton-college.ac.uk



50-acre site in beautiful unspoilt Norfolk countryside; Traditional farm worked with heavy horses; Rare breeds of animals

We run a full programme of educational events for schools. June and July have been very busy, especially with primary schools enjoying the good weather. We have been pleased to welcome pre-schools to the museum this year. Our new Early Years Centre for under 5s has been well used and it is excellent to see young children enjoying the farm. During the school holidays there have been family activities including fun on the farm and bugs and beasts. A competition to name the Red Poll calf born at the beginning of the holidays resulted in the new addition being called 'Chocolate'.

For further information

Colly Mudie, Education officer 01362 869256 Colly.mudie@norfolk.gov.uk
or Natasha Gales 01362 869251
www.norfolk.gov.uk/leisure/museums

Events at the Norfolk Showground in 2003 and 2004

Schools Art Competition

Kindly sponsored by **The Clan Trust**

Don't miss the opportunity to win prizes for both the school and child in our 2004 Schools Art Competition; the closing date is **12 March 2004**.

There are five age group categories from Reception to Year 10. First prize for each category will receive £100 for the school and £30 for the child with the runners-up in each category receiving £75 for the school and £10 for the child. The competition will be entitled 'Norfolk Farming in Style'. This is intended to give children the opportunity to study the work of professional artists and then, for the children to produce a piece of art on any aspect of locally produced Food, Farming and the Countryside, in the style of their chosen artist. Alternatively children may use their own style, without reference to the existing work.

Winners for 2003

Reception, Years 1 & 2—Winner: Samantha Weston, Wood-Dene School; **Runner-up:** Ruby O'Grady, Bawdeswell Primary.

Years 3 & 4—Winner: Kayley Melton, Hockering Primary; **Runner-up:** Laura Smithson, Hockering Primary. **Years 5 & 6**—Winner: Nathan Bedwell, Glebeland CP School; **Runner-up:** Lucy Rand, Brisley Primary. **Years 7 & 8**—Winner: Hannah Weston, Wood-Dene School; **Runner-up:** Victoria Napthen, Horsford All Saints Middle. **Years 9 & 10**—Winner: Lewis Roberts, Cliff Park High; **Runner-up:** Shaffia Khan, Cliff Park High.

Schools Poetry Competition

Kindly sponsored by **Reeves and Neylan**

For the first time this year we ran a poetry competition and were delighted with the response receiving a total of 291 entries.

The competition will be repeated for 2004. It is intended to give children the opportunity to write a poem about any aspect of Food, Farming and the Countryside. There will be three categories, KS 1, 2 and 3. First prize for each Key Stage will receive £100 for the school and £30 for the child with the runners-up in each Key Stage receiving £75 for the school and £10 for the child; the closing date: **2 April 2004**.

Winners for 2003

KS 1—Winner: William Dodds, Brancaster Primary; **Runner-up:** Henry Tidd, Brancaster Primary. **KS 2**—Winner: Suzanne Ribbands, West Flegg Middle School. **KS 3**—Winner: Alicia Audsley, Wood-Dene School; **Runner-up:** Christian Thorley, Wymondham College.

Royal Norfolk Show 30 June & 1 July 2004 – School Trails

Kindly sponsored by **Norwich Union**

The 2003 Royal Norfolk Show welcomed 4,441 school children and many took part in the school trails. School parties visiting the Royal Norfolk Show enjoy a discounted rate of £2.00 per school child

these fees can be reclaimed by returning completed school trails. Trails will be available for KS 1, 2 and 3 on Countryside & Conservation, Woodland Craft, Woodland Nature, Livestock, Beekeeping, Science & Geography, linked to the national curriculum. School Trail packs will be available **May 2004**.

Did you know Schools can visit The Norfolk Showground **FREE** of charge

Schools are invited to bring organised parties of children to use the Woodland and Conservation areas for educational activities.

- Guided Tours can be arranged.
- Tree and Wildflower identification.
- Pond dipping.
- Undercover meeting area.
- Hard roadway for coach parking.
- Toilet facilities.

Spring Fling Tuesday 6 April 2004

Come along and join in the fun, learn more about Food, Farming and the Countryside at the 2004 Spring Fling.

This popular event takes place in the School Easter holidays. Hands on activities aimed at the 4–14 years age range. An adult must accompany children. Most stands are under cover and sensible footwear and clothing is required for the Woodland Walk. Details will be advertised in the press and on our website www.royalnorfolkshow.co.uk.

For entry forms or further information

Linda Rose, Tel: 01603 731966 schooltrails@royalnorfolkshow.co.uk

Freethorpe Primary School visit Easton



We went on the coach. When we got there, we went into the barn. They put us in groups. First we went to see the red squirrels. The red squirrels were hiding in their box. Next we went to see the piglets. When the lady went in, the piglets came out. The lady picked one up. We were allowed to stroke the piglet. It was very hairy. Next we went to see the sheep. We saw one being born. Then we saw some deer. We weren't allowed to go that near to them. Then we went to see the cows. The cows were very big. They liked to lick us. Their tongues were all slimy and rough. After that we had our lunch, then I went pond dipping. I caught one red water worm.

Felicity Hall (Year 2)

LDC Hire an Incubator

Browick Road Language Development Centre (LDC) is a centre for Foundation and KS 1 children who have speech and language disorders. They all have statements and have complex needs. Most of all they need to see, touch, feel and experience to understand things which other children access successfully through pictures and books.



So, last term, when our topic was growing things (in its widest sense) we hired an incubator from NFEL so we could see and understand that eggs may become chicks. I say may, because we did not have 100% success rate, and that in itself is an important lesson.

The children were fascinated by every part of the procedure from setting up the incubator to finally putting the chicks in a box to take back to the farm. They gave every chick a name and studied their different characters. Although 'pecking order' was way beyond any language that they could use or understand, they saw it in action, and the bossy one came in for a fair amount of criticism! The farmer had given us a selection of eggs from different breeds (another learning point) and so the chicks were all different and easily identified. It was a truly wonderful experience for all of us.

Su Summers

Iheld the baby chick and it was soft. It sat on my hand. It was ticklish.

Keanu

'Like opening a Christmas stocking' at Notre Dame High School

Borrowing the KS 3 resource boxes was like opening a Christmas stocking – the goodies went right to the bottom!

We found the teaching aids invaluable in supporting our teaching of topics such as pesticides and fertilisers, ecology and selective breeding.

The resources themselves can be used in a variety of Year groups and the videos on animal welfare even used for Year 13

students in their Environmental Science course. The posters were a super resource and provided an excellent focus for Year 12 Biology students debating organic vs inorganic fertilisers.

The resource saves spending hours wading through outdated textbooks or searching the web and students really do find them interesting alternative to their 'normal' textbooks.

Richard Cranmer

Gillingham St Michael's C of E, VA First School at Easton

The pigs were cute but very smelly. I liked catching things in the pond. I caught two little fish.

Samantha

What I liked best at Easton Farm was when I drew stuffed animals at the farm. A taxidermist stuffed them.

George

My favourite animal on the farm was the Suffolk sheep. I had a great day at the farm. I liked it there.

George N.

What I liked best at Easton Farm was going pond dipping. I caught one fish and a water boatman.

Christopher

Iespecially liked the little black lamb because it kept licking me and biting my dress. I found the milking parlour very interesting because all the things they told me I didn't know. I liked the cows, about five or six of them were pregnant.

Emily

What I liked best at Easton Farm was looking at the cows and when we went to the milking parlour because there were interesting things to learn.

Hugh

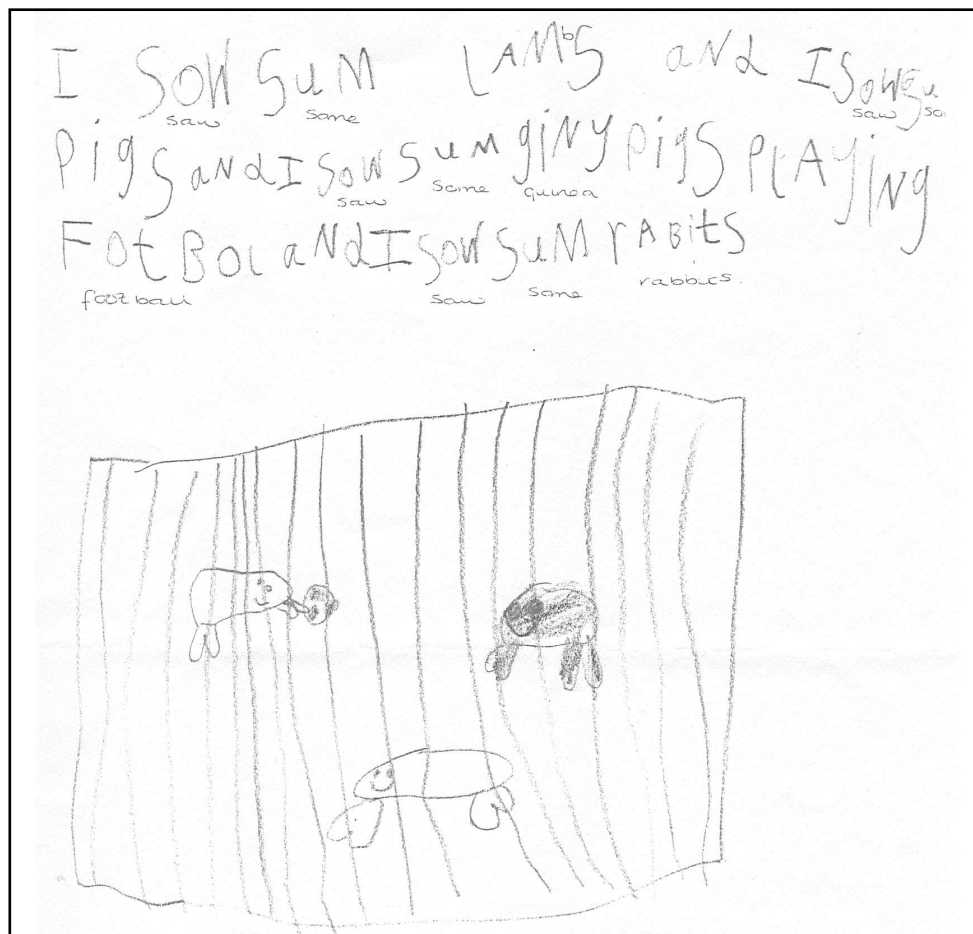
Thurlton Primary School at Willow Farm, Norton Subcourse

Even though the weather was not perfect, we had a really good day at Willow Farm.

Farmer Wright was there to meet us when we arrived by minibus. First, we walked up a track to look at some crops that were grown for animal feed. We also gathered lots of different kinds of leaves to be used in the classroom the following day. We were going to sort them by size and shape and draw them in our science books. We proceeded across another field where we observed some cattle and a very large bull named Fudge. We talked about the cattle and Farmer Wright showed us how ear tags were attached to the cattle. He demonstrated this on a piece of cardboard.

After lunch we went to look at some more crops including barley and a selection of vegetables. The farmer and his wife made us feel extremely welcome and with a little bit of persuasion, I am hoping they will let us visit again next year.

Valerie Osborne and the Reception class



Whitefriars C of E School, Kings Lynn – Reception visit to Home Farm, Stow Bardolph

NFEL

Norfolk Farm Education Link (NFEL) is a sub committee of **Norfolk Education Industry and Commerce Group (NEICG)** which aims to promote business awareness and education for students in schools and colleges in and around Norfolk. It is a charity governed by a group of Trustees who are prominent local business people.



Registered Charity No. 284518

NFEL Aims

- To promote an appreciation of the relevance of farming in society;
- To assist teachers to establish a network within farming and allied industries;
- To enable children to study the complexities of modern farming;
- To facilitate the understanding of life in the countryside;
- To provide opportunities for those working in agriculture to have a better understanding of education today and discover how the needs of Society are best met within the constraints of our present education system; and
- To establish links with other national and local organisations which share similar aims.

NFEL members represent

- Norfolk Farmers;
- Norfolk Schools;
- Country Landowners Association;
- Easton College;
- Norfolk Education Committee;
- Norfolk Rural Life Museum;
- Eastern Counties Newspapers;
- National Farmers' Union;
- Women's Food and Farming Union; and
- NEICG.

Ken Leggett (Chairman)

NFEL Newsletter

Editor

Mrs Su Summers
1 St Clements Hill
Norwich NR3 4DE
Tel: 01603 412714
su@linaria.co.uk

Additional Copies from

Ken Leggett: 01603 408823

Toftwood Junior School
Dereham
Norfolk
24th June 2003

Dear sponsor,
I really liked the farm it was the best trip ever! I learnt a lot - I never knew there was that much food that contained fat or that there was that many kinds of food. I liked the pond dipping me and my partner found 2 pond snails, 8 pond skaters, 1 fish and 5 pond beetles. After that we went on a woodland treasure hunt I found everything I needed. Then we went on the best bit - the tour. I learnt a lot about sheep fur. We got to see piglets smelly - maybe, cute - definitely; then we went to see the cows one of the cows tried to kiss me with its rough tongue.

I wish I could go again soon.

Thank you
Jack Bainbridge

Age 8



NFEL can help you – Loan Boxes for Nursery, KS 1, 2, 3 and 4

Nursery, KS1 & KS2

We can supply you with £1000s of cross-curricular resources to enrich your teaching & pupils' learning of:

Living & Growing – Plant & animal life cycles; Conservation and the environment; Current local and global farming issues eg, GM, Organics, Sustainability, Animal welfare, Food production and Healthy living, Literacy using our large range of fiction & non-fiction books.

We'll help you to bring all this alive...

- A local study of a farm and we'll give you a grant to help with transport costs!
- A small incubator and brooder to hatch chicks in school!
- Speakers to come into school

Don't miss out on this extensive package of Fiction, non-fiction and Big Books, Model farm with animals and machinery, seed, soil, wool and wood samples, posters, videos, CD-ROMs, teacher's packs, student activities and **much more...**

Book NOW for 2003–2005
or arrange to see a loan

KS 3 & 4

We have 20 large loan boxes crammed with a wide range of books, posters, CD-ROMs, videos, games, teaching packs, pupil activities and much more to support your teaching of Citizenship, Biology, Food technology & Geography.

Examples of resources include:

- Contrasting farming systems in the UK & Less Economically-Developed Countries
- Agricultural Practices : Intensive, Organics, Integration, conventional
- Sustainable Development and Land Management
- Globalisation and Ethical Trading
- Animal Welfare, Cloning & Genetic Engineering
- Conservation Schemes, Biodiversity and Endangered Species Programmes
- Controversial Countryside Issues
- Food Industry, Safety, Product Design & Processing
- Global Diets and World Recipes

Also, we can help to link your school with a local farm, suggest speakers to come to school, and give you a transport grant for a farm visit.

For further information or to see our loan boxes

Moya Myerscough, Head of Schools Liaison, Easton College, Easton, Norwich NR9 5DX
Tel: 01603 731257 Fax: 01603 741438 schools@easton-college.ac.uk