

02 July 2009

Dear Colleague

**FREE TEACHER'S EVENT – 2 OCTOBER 2009**  
**Norwich Cathedral's Hostry Visitor and Education Centre**

**SAVE THE DATE!**

On FRIDAY 2 OCTOBER, the Norwich Education Network is offering a free Teacher's Day at Norwich Cathedral's new Hostry Visitor and Education Centre (due to open at the end of the summer).

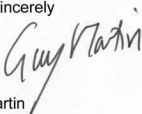
You are invited to drop in at any time between 2pm and 7pm to meet representatives from the Norwich Education Network\* who will give details about their educational activities and services. You will also be able to take a tour of the beautiful Cathedral as well as being among the first to experience the new Hostry Centre (details over).

Throughout the day there will be a wide range of interactive workshops on offer designed to inspire both primary and secondary level teachers and you will be able to talk to us first hand about how we might support your needs in the future.

All this, with pastries and refreshments too!

I will send you an invitation and full details at the beginning of the autumn term, but we wanted to give you as much advance notice as possible as this is sure to be a heavily subscribed event.

Yours sincerely



Guy Martin  
Chair  
Norwich Education Network  
Cinema City  
St Andrews Street  
Norwich  
NR2 4AD

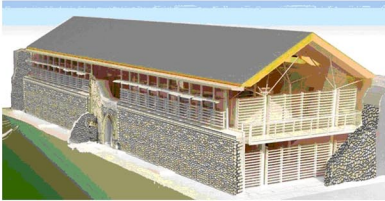
01603 625145 email: [guy@cinemaplus.org.uk](mailto:guy@cinemaplus.org.uk)

\*Member organisations who will be present on the day: Norwich Cathedral, Cinema City, Norwich Theatre Royal, Norwich Playhouse, Inspire Discovery Centre, Castle Museum, Norwich Puppet Theatre, Dragon Hall, The Julian Centre, The Cathedral of St John the Baptist, Norwich Heritage and Economic Regeneration Trust (HEART), Norfolk Record Office, Norfolk and Norwich Millennium Library, Hungate Medieval Art and the Sainsbury Centre for Visual Arts.

# THE HOSTRY

## Visitor and Education Centre

### Norwich Cathedral



The new Hostry has been built within the footprint of the medieval Hostry or guest house and designed by a team led by Sir Michael Hopkins, the architect of the Cathedral's award-winning Refectory. Just as he successfully incorporated elements of the original monastic buildings into that project so, in this sister building, the team has used similar architectural and engineering patterns and natural materials.

Once again there will be features such as;

- Striking oak 'trees' to support the roof from inside
- Large areas of glass to ensure the building is light and airy
- Striking window louvres similar to those in the Refectory
- The original medieval Hostry arch has been incorporated into the design so visitors will, as in the days of the priory, enter the building through the original welcoming door.

The building houses a classroom, conference room and purpose built exhibition space, as well as the song school for the choirs and an interpretation room in the old locutory which leads in to the Cathedral.

For more details go to: [www.cathedral.org.uk](http://www.cathedral.org.uk)

