

NORWICH THEATRE ROYAL

EDUCATION UPDATE

September 2009 – June 2010

Welcome to Norwich Theatre Royal's Education Newsletter, which has details of all productions that may be of interest to you and your students in the coming months. If you wish to be involved in the production-related activities or receive any of the educational resource packs please contact the education department for more information. Jason Raper, Education Manager

PRODUCTIONS

DRAMA ~

Shakespeare 4 Kidz – MACBETH
Norwich Theatre Royal Actors Company - Blackbird
Stepping Out
Rain Man
The Pitmen Painters

DANCE ~

NBT – Wuthering Heights
Rambert Dance Company
Moscow City Ballet – Cinderella
Richard Alston Dance Company
NBT – Peter Pan

MUSICAL ~

Chicago
Les Miserables
Disney's High School Musical 2

OPERA ~

Glyndebourne on Tour

PANTO ~

Robin Hood

THEATRE ROYAL ~

Backstage Tours
Work Experience
Risk Assessments
Norwich Education Network

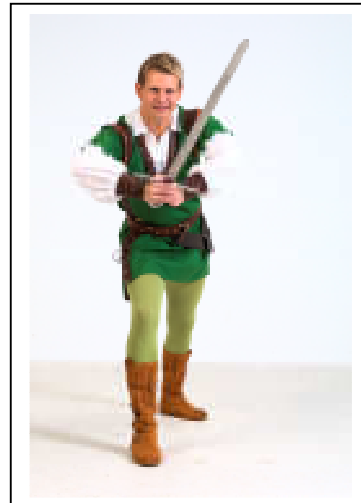
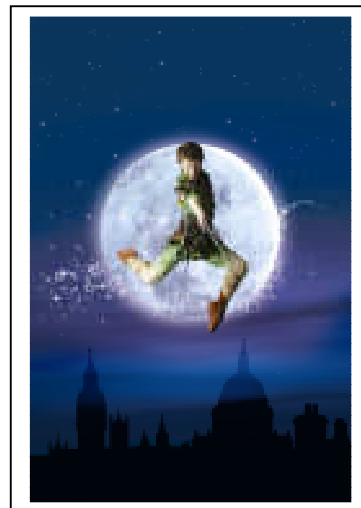


Photo above: Robin Hood

Photo below: NBT Peter Pan



Contact Details

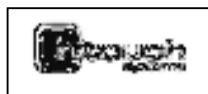
✉ The Education Department
Norwich Theatre Royal
Theatre Street
Norwich



Education
Fax
Email
Website

01603 598523/ 598522/598528
01603 598501
j.raper@theatreroyalnorwich.co.uk
www.theatreroyalnorwich.co.uk

Norwich Theatre Royal's Education Department is generously supported by The Monument Trust and Swiss Re



For details of events and workshops call the Education Department on 01603 598523
To book tickets for all performances call the Box Office on 01603 630000

NORWICH THEATRE ROYAL EDUCATION UPDATE

September 2009 – June 2010

DRAMA

SHAKESPEARE 4 KIDZ ~ MACBETH


Thursday 8th October 2009 at 1.30pm & 7.00pm

Friday 9th October 2009 at 10.00am & 1.30pm

Perfect for those studying Shakespeare at KEY STAGES 2 & 3

That's wicked! The story of how a warrior learns from three strange witches that his destiny is to be King of Scotland. The show includes song and dance, with many of Shakespeare's original words woven into easy-to-understand modern language. Great Entertainment for all ages.

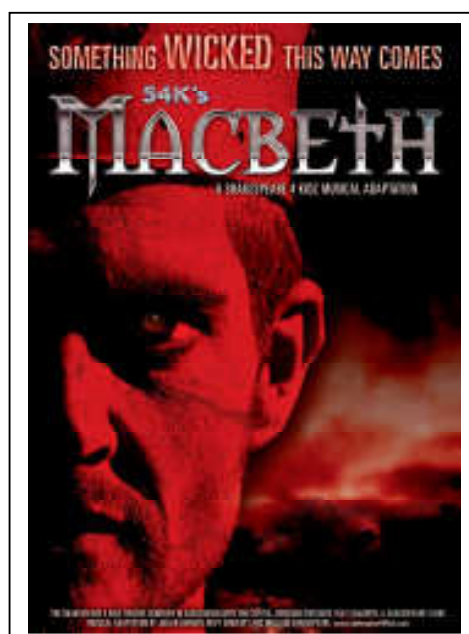
Shakespeare 4 Kidz bring their unique musical storytelling style to the most famous Shakespeare play of them all. *"By the pricking of my thumbs, something wicked this way comes!"*

 Concessions: Adults £16.00, Children £9.50.

1 TEACHER FREE WITH EVERY 10 SEATS BOOKED, ALL PERFORMANCES.

SHAKESPEARE 4 KIDZ ~ Teacher Resources

Teachers' Packs and other helpful teacher resources (some of which are FREE) are available to download online from their website www.shakespeare4kidz.com. Their website is highly recommended by Norwich Theatre Royal's education department.



For details of events and workshops call the Education Department on 01603 598523
To book tickets for all performances call the Box Office on 01603 630000

NORWICH | THEATRE | ROYAL

NORWICH THEATRE ROYAL

EDUCATION UPDATE

September 2009 – June 2010

SHAKESPEARE 4 KIDZ ~

Creative Shakespeare Education Workshops

Available the week beginning 27th September 2009

Their Creative Shakespeare Education programme provides a unique empathy-based system of interactive workshops with direct links to the aims and objectives of the UK National Curriculum. It pays close attention to the theory of multiple intelligences and kinaesthetic arts, and has been endorsed by top educationalists and by The British Council as an example of excellence in British education.

Their Aims

- To create a stimulating and accessible session in which we support the work done in the classroom while offering a unique approach to understanding the text through pupils' practical interaction with skilled professional actors
- To create a safe environment in which every pupil will feel that their contribution is valued
- To demystify Shakespeare; making his work accessible whilst staying true to his style and content
- To lay the foundation for further enthusiastic study of the work of William Shakespeare.

They offer services from "infants to INSET" and all can be tailored to suit your own specific requirements.

Shakespeare 4 Kidz Workshop Prices

All workshops are 2 hours in length unless otherwise stated.

Pricing	1 Workshop	2 Workshops (same day)
Infant Workshops (1 Hour)	£320	£590
Junior Workshops	£320	£590
Lower Secondary Workshops	£375	£690
GCSE Workshops	£375	£690
SEN Workshops	£375	£690

ALL PRICES EXCLUSIVE OF VAT. Discounts apply for bulk bookings – please call for prices of 3 or more workshops. 25% deposit required to secure booking, with balance payable by date of Workshop.

N.B. If you have booked tickets to see this production then your affiliated workshop will be discounted.

FOR FURTHER INFORMATION CONTACT

Shakespeare 4 Kidz (UK) Ltd, 42 Station Road East, Oxted, Surrey, RH8 0PG.

Tel: (01883) 723444 Fax: (01883) 730384

E-mail: education@shakespeare4kidz.com

Website: www.shakespeare4kidz.com

NORWICH THEATRE ROYAL EDUCATION UPDATE

September 2009 – June 2010

NORWICH THEATRE ROYAL ACTORS COMPANY


presents ~ **Blackbird** by David Harrower

Tuesday 13th – Saturday 17th October 2009 at the Norwich Playhouse

The Norwich Theatre Royals' Actors Company is the only company within Norfolk dedicated to producing high quality *contemporary* theatre, offering students the opportunity to experience dramas that would otherwise not be seen within our region.

Blackbird is an electrifying and explosive drama that won the Olivier Award for Best New Play in 2007. Fifteen years ago Ray and Una had a relationship. After its disastrous ending, Ray went away and tried to forget, hoping that he would never be found. But Una has thought of nothing else. Tracking him down and arriving unannounced at his place of work, she forces him to finally confront his past. Back when he was 40 and she was 12. *"A modern classic"* The Independent

Suitable for ages 16+

 Concessions: £10. Student Groups £8.

NORWICH THEATRE ROYAL ACTORS COMPANY ~

Post-show Question and Answer Event – FREE

Thursday 15th October 2009 in the Norwich Playhouse Auditorium

This free event due to take place directly after the evening performance (lasting approximately ½ an hour) offers the opportunity for students, along with other members of the audience, to speak to both cast and director about what they have just seen and any aspect of the production process.

NORWICH THEATRE ROYAL ACTORS COMPANY ~

In-School Workshops (Year 12 and above)

Available Wednesday 14th – Friday 16th October 2009

These workshops are designed to help encourage an interest and enjoyment of contemporary theatre, develop an understanding of different theatrical styles and genres whilst offering opportunities for students to work practically alongside professionals from within the industry. Students will examine the journey a director and cast make to get a contemporary play off the page and into the theatre. Each workshop is led by a cast member and director Martin Hutson, who has worked alongside some of Britain's best directors including Michael Grandage, Peter Gill and Bill Alexander.

Workshops are designed for groups of up to approximately 25 students and are suitable for Drama students aged 16 and above.

Cost: Half day Workshop (2 hours) £120 + VAT

For more information or to book a workshop, please contact Jason Raper on 01603 598523 or email j.raper@theatreroyalnorwich.co.uk

NORWICH THEATRE ROYAL

EDUCATION UPDATE

September 2009 – June 2010

STEPPING OUT ~

Tuesday 13th - Saturday 17th October 2009

In a dusty church hall, ex-professional dancer Mavis Turner holds her weekly tap class. Every Thursday, in stumbles her well-intentioned but not overly talented troupe – the awkward but hugely enthusiastic Lynne, Snooty Vera, street wise Maxine and the rest of the group, all brought together to dance as if no one is watching and hopefully no one ever will. That's until they're invited to perform at a charity gala. As disbelief is replaced by sheer terror, can this bunch of amateurs pull together and put on the performance of a lifetime.



Concessions: Adults: £20.50 - £5, Under 18s Special Price ~ Bands C&D £8, Wednesday to Thursday Evenings/Matinees. Group Rates Wednesday to Thursday Evenings/Matinees

RAIN MAN ~

Monday 19th October 2009 - Saturday 24th October 2009

Following the death of his father, Charlie Babbitt finds out that 'his' inheritance has been bequeathed to an unknown beneficiary. Hot on the trail of the cash, Charlie embarks on a life-changing journey as he discovers the meaning of unconditional love through Raymond, an older brother he never knew he had.

Neil Morrissey (Men Behaving Badly, Waterloo Road) and Oliver Chris (Green Wing, The Office) star in this funny, touching and heart-warming story, adapted for the stage from the 1988 Oscar winning movie which famously paired Dustin Hoffman with Tom Cruise.

Contains strong language



Concessions: Adults: £20.50 - £5, Under 18s Special Price ~ Bands A&B £10, Tuesday to Thursday Evenings/Matinees. Group Rates Tuesday to Thursday Evenings/Matinees

RAIN MAN ~

Extra Educational Activities/Resources

If you wish to have some of the company of *Rain Man* visit your school or organisation to run workshops or if you wish for your students to attend a Technical Production Event or a Page to Stage event then please contact the Theatre Royal Education Department to express your interest in these events and to arrange such a visit. An Education Resource Pack, aimed at Key Stage 4 and above, is available to download free online from their website www.rainmanonstage.com

NORWICH THEATRE ROYAL

EDUCATION UPDATE


September 2009 – June 2010

National Theatre ~ THE PITMEN PAINTERS

Tuesday 10th November – Saturday 14th November 2009

discover:
National Theatre

In 1934, a group of Ashington miners hired a professor to teach an art appreciation evening class. Rapidly abandoning theory in favour of practice, the pitmen began to paint. Within a few years the most avant-garde artists became their friends and their work was acquired by prestigious collections; but every day they worked, as before, down the mine.

 Concessions: Under 18s Special Price ~ Bands C&D £8, Wednesday & Thursday Evenings/Matinees
Group Rates Wednesday & Thursday Evenings/Matinees
Captioned Performance: Friday Evening

THE PITMEN PAINTERS ~ Post-Performance Discussion - Free

Wednesday 11th November 2009, in the auditorium

discover:
National Theatre

This free event, due to take place directly after the evening performance in the auditorium, will last approximately ½ an hour and may involve members of the cast. The format will involve some introduction from the chair and then questions from the floor. If you have booked for another performance but wish to attend please contact the education department to reserve your place.

THE PITMEN PAINTERS ~ In-School Workshops

Available Tuesday 10th November & Wednesday 11th November 2009

discover:
National Theatre

Led by the staff director, Jonathan Humphreys, these 2 hour pre-show practical drama sessions, as part of the Discover Programme, will give your students the opportunity to look at staging a scene from the play and exploring the roles of the director and actor. During the workshop, your students will have the chance to think about casting, character research and design elements of the show. You will be given the scene before the workshop so that the students can work on it in preparation for the session with the staff director. Workshops are open to students aged 14+ and priority is given to those who will be watching this production.

Cost: **Half day Workshop (2 hours)** **£150**
 State Schools subsidised price **£100**

Workshops are designed for groups of approx. 25 students

THE PITMEN PAINTERS ~ Page to Stage Event

Thursday 12th November 11.30am – 1.00pm, in the auditorium

discover:
National Theatre

This 1½ hour session will be a lecture-demonstration led from the stage by Jonathan Humphreys and Dawn Ingleson, Touring Programme Manager for Discover: National Theatre, placing your students in the role of the director. It will focus on a speech, a piece of dialogue, and a 'crowd' scene from the play. It will allow your students the opportunity to use the set and participate in the process of staging scenes from the play.

Cost: **Page to Stage £2.50 per student (teachers go free)**

The Pitmen Painters events are delivered by the Discover Programme at the National Theatre

The Discover Programme is supported by The Dorset Foundation.

NORWICH THEATRE ROYAL EDUCATION UPDATE

September 2009 – June 2010

DANCE

NORTHERN BALLET THEATRE ~ Wuthering Heights

Tuesday 29th September – Saturday 3rd October 2009

Passionate and obsessive, Cathy and Heathcliff's love is as unruly and dangerous as the Yorkshire moors that surround them. As children they are inseparable, running wild and free on the moors, but over time their childish affection deepens into an overwhelming love – a devastating force that even death cannot destroy.



Concessions

Schools Bands C&D £6 Tuesday - Wednesday Evenings and Matinees

Under 18s Special Price Bands A&B £6 Off Tuesday – Wednesday Evening and Matinees

Group Rates Tuesday, Wednesday, Friday Evenings and Matinees

NORWICH THEATRE ROYAL

EDUCATION UPDATE

September 2009 – June 2010

NORTHERN BALLET THEATRE *Wuthering Heights* ~

Pre-Performance Talk ~ Free to ticket holders

Wednesday 30th September 2009 6.30pm – 7.00pm, in the auditorium

Discover more about Northern Ballet Theatre and the work being performed.



This event is free to ticket holders but you must book in advance through the Box Office.

NORTHERN BALLET THEATRE *Wuthering Heights* ~

Ballet Explored

Thursday 1st October 2009 @ 11.15am – 12.45pm, in the Targetfollow Room/auditorium

Find out more about the production, the company and watch the dancers' daily training session on stage. This event is open to those attending a performance of *Wuthering Heights* and although not suitable for all school groups there are a limited number of spaces reserved for small groups of A-Level students with a relevant interest in dance.

Cost: £3.50 per person

For further details and to book your place please contact Jason Raper, Education Manager.

NORTHERN BALLET THEATRE *Wuthering Heights* ~

Schools' Production Event

Thursday 1st October 2009 @ 4.45pm - 5.15pm, in the Auditorium

This production event is a Northern Ballet Theatre event, offering ticket-holders an opportunity to gain a deeper and richer understanding of how a production is put together.

Led by Dance Education Officer, Caroline Burn and members of the technical team, the event includes both an informative talk and practical demonstration about how the production is put together, from page to stage. Technicians will be on stage to demonstrate lighting effects and flying of scenery from the production and it will provide ticket holders with an appreciation of the production at a different level, including an understanding of the making of a show.



It is suitable for School groups with tickets to see a performance of *Wuthering Heights*, whether they have already seen the show or are going to see the show.

NORWICH THEATRE ROYAL

EDUCATION UPDATE

September 2009 – June 2010

NORTHERN BALLET THEATRE *Wuthering Heights* ~ In-School Workshops

Available from Monday 28th September – Saturday 3rd October 2009

Northern Ballet Theatre is excited to be returning to the Norwich area with our school workshop programme to accompany the production, *Wuthering Heights*.

School workshops will be an excellent introduction to the production of *Wuthering Heights*; the workshops focus on character development through movement by stimulating pupils' creativity and musicality.

The workshops available will be led by an NBT dance artist accompanied by a musician, and will include a fun warm-up and creative exploration of repertoire from the show.

The workshops are for people aged 8 and above, two sessions per day with up to two groups, a maximum of 30 participants per group. Previous dance experience is not required and we are delighted if members of staff participate with their group.

The full-day workshop costs: £375 plus VAT
£310 plus VAT for affiliated schools
(Remember: you can affiliate your school for FREE!)



NORTHERN BALLET THEATRE ~ School Affiliation

Schools can affiliate with Northern Ballet Theatre for free, over a period of two years. During this time you will benefit from two workshops at a reduced rate of £310 + VAT (saving £65 on normal prices) and two free places on two Teacher INSET sessions (subject to availability). Affiliated schools receive resource packs to accompany workshops, are the first to receive information about future projects and keep up to date with quarterly copies of the company magazine, *Northern Exposure*.

To book a workshop or to affiliate your school to Northern Ballet Theatre please contact their Learning and Access Co-ordinator, Jo Dean on 0113 274 5355 or e-mail jo.dean@northernballettheatre.co.uk

NORWICH THEATRE ROYAL

EDUCATION UPDATE

September 2009 – June 2010

NORTHERN BALLET THEATRE ~ Peter Pan

Tuesday 27th April – Saturday 1st May 2010



“I do believe in Fairies, I do, I do”

Join Peter, John, Michael, Wendy and Tinkerbell; as they soar high in the sky “second to the right and straight on till morning” to an enchanted world where wicked Pirates prey on Lost Boys and an adventure lurks round every corner.

This popular production comes to Norwich for the first time, and is danced to the music of the Oscar-Winning composer Stephen Warbeck (Shakespeare in Love). This charming adaptation of J M Barrie’s story is an unforgettable ballet experience.



Concessions: Schools Bands C&D £7 Thursday Matinee Only

Under 18s Special Price Bands A&B £10 Off Tuesday – Thursday Evenings and Matinees

Group Rates Tuesday – Thursday Evenings and Matinees

Family Ticket: Four People (max 2 adults)

Bands A&B £80,

Buy up to 3 additional child seats for £10 each, Tuesday– Friday Evenings Only

NORTHERN BALLET THEATRE ~ Peter Pan

Ballet Explored

April 2010 @ Time and Place TBC

Pre-Performance Talk

April 2010 @ Time and Place TBC

Schools’ Production Event

April 2010 @ Time and Place TBC

In-School Workshops

April 2010 @ Time and Place TBC

School Affiliation

For details of all these events please refer to *Northern Ballet Theatre ~ Wuthering Heights* events.

Prices and details could be subject to change, please contact the Education Department for up to date details.

NORWICH THEATRE ROYAL

EDUCATION UPDATE

September 2009 – June 2010

RAMBERT DANCE COMPANY ~ Comedy of Change

Wednesday 25th – Friday 27th November 2009

Rambert Dance Company will celebrate its latest visit to Norwich Theatre Royal with a programme brimming with music and movement. Rambert's 22 dancers are considered to be some of the finest and most versatile in the world, performing a wide range of styles with precision and flair. The Company believes in the power of live music to enrich the senses and is the only modern dance company to permanently tour with an orchestra. Rambert's latest work promises to be another inspirational and musically outstanding piece of dance.

Comedy of Change – Choreographed by Mark Baldwin and performed to a brand new score by Julian Anderson, it skilfully blends dance and science into a striking performance.

Hush – A new light hearted piece by Christopher Bruce.

A Linha Curva – Choreographed by Itzik Galili, an irresistible samba inspired piece featuring one of Rambert's largest ever casts.



Concessions: Schools: Bands C & D £6 First night and Thursday matinee,
Under 25s Special Price: Bands A & B £8 First night
Group Rates at all performances.



Signed performance: Thursday 26th November 7.30pm



A Linha Curva Photo by Richard Dean



Hush Photo by Anthony Crickmay

RAMBERT DANCE COMPANY ~ Pre-performance Talk ~ Free to ticket holders

Thursday 26th November 2009 @ 6.30 – 7.00pm, in the Auditorium

This discussion will be led by Rambert's Artistic Director, Mark Baldwin and is your opportunity to discover more about Rambert Dance Company and the works being performed. If your group would like to provide questions beforehand to the Theatre Royal education department these can then be passed to Mark Baldwin in preparation.



This event is free to ticket holders but you must book in advance through the Box Office.

NORWICH THEATRE ROYAL EDUCATION UPDATE

September 2009 – June 2010

RAMBERT DANCE COMPANY ~ In-school Workshops — Throughout November 2009

To support the work of the Company in performance, Rambert Learning and Participation have a bank of highly skilled dancers and teachers who lead workshops based on Rambert repertoire, offering a programme of education activities to support dance work in schools and colleges. Rambert are offering workshops in: *Swansong*, *Eternal Light*, *The Comedy of Change*, *Carnival of the Animals* and *A Linha Curva*.

They are suitable for people aged 10 and over and are particularly relevant for:

- students studying GCSE or A-Level Dance
- students studying Performing Arts or Expressive Arts

They aim to introduce Rambert, setting the repertoire into the context of a daily working dance company. They will lead a short technical warm-up, either to introduce contemporary movement vocabulary or to stretch the technical ability of more able groups. This would be followed by an introduction to the specific piece of repertoire to be explored - depending on the ability and experience of the group some shorter sections of the repertoire would be taught. The rest of the workshop would be dedicated to exploring some of the themes, motifs and choreographic devices used by the company in rehearsal so that the group can work creatively, generate some new movement material or stretch current choreographic techniques.

Costs are as follows:

- Half Day of Dance (max. of 3 hours) - **£165** + VAT
- Full Day of Dance (max. of 6 hours including 1 hour lunch) - **£250** + VAT
- Five Day Residency - **£1,145** + VAT (this is flexible depending on the project)
- The animateur will invoice you for costs incurred, mainly travel (either a return train ticket or petrol is calculated at 40p per mile) and if your school is not local to London they may also invoice you for their accommodation (**£44.60**).



For further information about workshops for schools, in-service sessions for teachers and educational resources please visit www.rambert.org.uk, email education@rambert.org.uk or call Emma Kerr (Rambert Education) on 020 8630 0616. Alternatively contact Norwich Theatre Royal's Education Department for further details.

NORWICH THEATRE ROYAL

EDUCATION UPDATE


September 2009 – June 2010

MOSCOW CITY BALLET ~ Cinderella

Tuesday 19th – Saturday 23rd January 2010

This classic ballet is performed by Moscow City Ballet formed in 1988 by the distinguished Russian choreographer Victor Smirnov-Golovanov. A highly acclaimed ex-soloist of The Bolshoi Ballet, Smirnov enjoys bringing his heritage of classical ballet in the Moscow style to audiences.

The company has some of the most accomplished and artistic soloists, and a sublime corps de ballet. The costumes and sets are beautiful, colourful and a feast for the eye, combined with Prokofiev's majestic and beautiful score performed by Moscow Ballet Orchestra, completes this treat for all dancers, performers and lovers of classical ballet.

 Concessions: Under 18s Special Price: Bands A&B £8.00 OFF all performances,
Group Rates Monday – Thursday and matinees.



REFRESHMENTS FOR SCHOOL PARTIES

Did you know that you can pre-book a large ice-cream or refreshment order for your group and have it made up ready for collection at the beginning of the interval? The Box Office will send you details of stock and prices with your group booking.

PACKED LUNCHES

If it is necessary for your group to eat a packed meal at the Theatre Royal, please contact the Duty Manager beforehand on 01603 598540.....we can supply very large plastic bags for your rubbish!



For details of events and workshops call the Education Department on 01603 598523
To book tickets for all performances call the Box Office on 01603 630000

NORWICH | THEATRE | ROYAL

NORWICH THEATRE ROYAL

EDUCATION UPDATE

September 2009 – June 2010

RICHARD ALSTON DANCE COMPANY ~

Tuesday 30th – Wednesday 31st March 2010

Richard Alston Dance Company will celebrate its latest visit to Norwich Theatre Royal with a programme brimming with music and movement. The programme includes the Norwich premiere of Alston's *Overdrive*, powered by the relentless push of Californian composer Terry Riley's thrilling *Keyboard Studies*. As the music creates ever more complicated layers of urgent rhythm, Alston's dancers are hard pressed to keep up with the pace and euphoria. The result is wild, energetic and thrilling.



Concessions:

Under 25s Special Price Bands A & B £6.00 for ALL performances

Group Rates: All performances

RICHARD ALSTON DANCE COMPANY ~

Pre-show Talk ~ Free to ticket holders

Tuesday 30th March 2010 @ 7.00pm, in the TargetFollow Room

Discover more about the Richard Alston Dance Company and the works being performed. The speaker will be Richard Alston himself.

This event will be of most interest to dance students. Please note this is always a popular event and that places are limited.



This event is free, but you must book in advance through the Box Office.

RICHARD ALSTON DANCE COMPANY ~

Essential Alston Workshops

Available throughout March 2010

Essential Alston workshops are led by a member of their team of experienced dance teachers and accompanied by live music. By taking class, learning repertoire, and creatively experimenting with material, participants are offered a flavour of the technical and choreographic style of RADC. Teachers aim to give participants a more informed way of appreciating the professional work when seen in performance.

Workshop prices:

£225 + VAT for a half day (up to 3 hours) + travel costs

£340 + VAT for a full day (2 workshops each up to 3 hours in length) + travel costs

A range of resource materials is also available to place Alston's work in a broader dance context. These include the **Essential Alston** video with accompanying teacher's booklet (£24.99 inc. p&p and VAT).

For further information, to learn more about their Teacher Resources or to book an Essential Alston workshop, please call Katie Fish on 0207 121 1032 or email katie.fish@theplace.org.uk or go to their website www.theplace.org.uk.

NORWICH THEATRE ROYAL EDUCATION UPDATE

September 2009 – June 2010

MUSICALS

CHICAGO ~

Monday 30th November – Saturday 5th December 2009

Based on real life events back in the roaring 20's, nightclub singer Roxie Hart shoots her lover; along with cell block rival, double-murderess Velma Kelly, they fight to keep from death row with the help of smooth-talking lawyer, Billy Flynn (Gary Wilmot). This award-winning musical by Kander and Ebb and choreography by the legendary Bob Fosse is a must see for all performance and dance students.



Concessions: Group Rates available Monday – Thursday and Saturday at 5pm.



Signed performance: Friday 4th December 8.45pm



CHICAGO ~

Extra Educational Activities

If your school group is planning to see this production and you wish to have some of the company of *Chicago* visit your school or organisation to run dance workshops (please note: there may be a cost attached to dance workshops). Other educational activities such as a Q&A session or a Meet 'n' Greet may also be possible. Please contact the Theatre Royal Education Department to express your interest in these events and to arrange such a visit.

NORWICH THEATRE ROYAL

EDUCATION UPDATE

September 2009 – June 2010

LES MISERABLES ~

Tuesday 16th February – Saturday 20th March 2010

Cameron Mackintosh is delighted to announce that a new 25th Anniversary Production of the world's longest running musical Les Miserables will embark on a major tour international tour beginning in December 2009 and will arrive at Norwich Theatre Royal in February 2010.

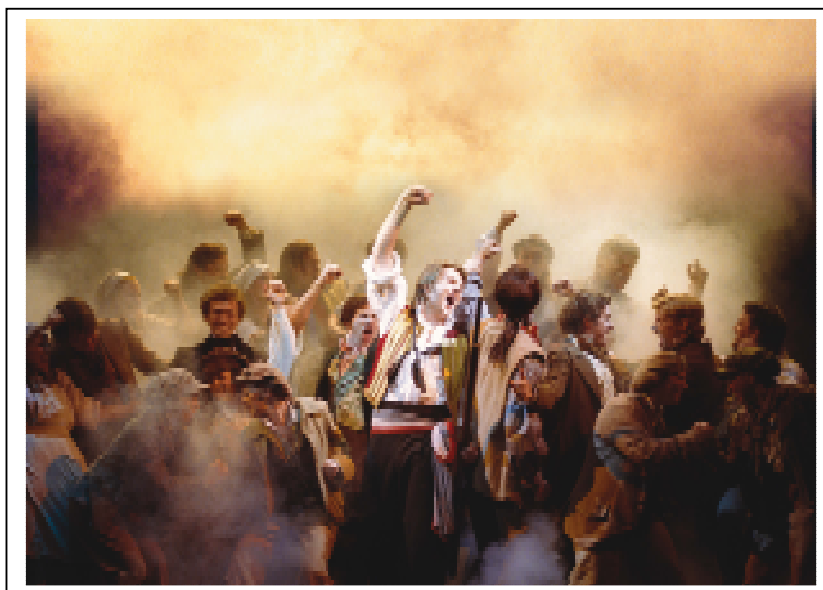
The magnificent score of Les Miserables includes the songs, 'I Dreamed a Dream', 'On My Own', 'Bring Him Home', 'Do You Hear the People Sing', 'One Day More', 'Empty Chairs at Empty Tables', 'Master of the House' and many more. This spectacular adaptation of Victor Hugo's masterpiece continues to thrill audiences night after night.



Concessions: Under 18's special price: Bands A & B £7.50 off Matinees only

Group rates: Monday to Thursday

Audio Described Performance; Saturday 20th March 2.30pm show



LES MISERABLES ~

Extra Educational Activities

If your school group is planning to see this production then educational activities such as In-school workshops, a Q&A session, or a Meet 'n' Greet may be possible. In the first instance please contact the education department to state your interest.

NORWICH THEATRE ROYAL

EDUCATION UPDATE

September 2009 – June 2010

DISNEY'S HIGH SCHOOL MUSICAL 2 ~

Monday 17th – Saturday 22nd May 2010

From the producers who brought you the smash hit production HIGH SCHOOL MUSICAL Live on Stage! HIGH SCHOOL MUSICAL is coming to Norwich!

School's out and the Wildcats are diving into the fabulous world of Lava Springs Country Club. Sharpay vows to win Troy's heart this summer but will she be able to come between East High basketball star and his true love, Gabriella? Can Ryan find a new groove – on the baseball field?! Will the gang come together for the Midsummer Night's Talent Show?

Introducing GMTV Search for Troy Winner Liam Doyle and featuring much-loved characters and hit songs from the smash-hit movie, including *What Time Is It*, *You Are the Music in Me* and *Fabulous*, as well as awesome dancing and an amazing live band.

The summer before senior year is a time that Wildcats will remember forever – be a part of it!



Concessions: Under 18's Special Price: Bands A&B £7.50 off Monday – Friday performances,
Group Rates: Monday – Friday performances.

DISNEY'S HIGH SCHOOL MUSICAL 2 ~

Early Bird Offer!!!!

SPECIAL DEAL

Book before Thursday 30th September 2009 and receive £10 OFF all top price (Bands A & B) tickets for *Disney's High School Musical 2*. This discount is open to all bookers.

DISNEY'S HIGH SCHOOL MUSICAL 2 ~

In-school Workshops dates TBC (must start at 1.00pm)

There is an opportunity for schools to have an hour-long workshop with the production Dance Captain, based on some of the repertoire from this production. Suitable for intermediate and experienced dance groups aged 12+. Please contact Norwich Theatre Royal's education department to state your interest.

DISNEY'S HIGH SCHOOL MUSICAL 2 ~

Educational Resource Pack

A free education pack, in conjunction with the show, will be available to download from www.hsmonstage.co.uk later this year.

NORWICH THEATRE ROYAL

EDUCATION UPDATE

September 2009 – June 2010

OPERA

GLYNDEBOURNE ON TOUR PRESENT –

Così fan tutte
by W A Mozart
Tuesday 17th & Friday 20th
November 2009

Falstaff
by G Verdi
Wednesday 18th & Saturday 21st
November 2009

Jenufa
by L Janacek
Thursday 19th
November 2009

Glyndebourne on Tour returns to Norwich with three spectacular productions. Showcasing some of the best young talent on the operatic stage, the company presents two much loved works of musical and dramatic beauty alongside an exciting new production direct from this summer's Glyndebourne Festival. *(Please note that supertitles are not visible from Stalls seats Rows Q – W)*

Così fan Tutte

Sung in Italian with English Supertitles.

Running time: Approximately 3 hours and 15 minutes including a 20 minute interval

Falstaff

Sung in Italian with English Supertitles.

Running time: Approximately 2 hours and 45 minutes including a 20 minute interval

Jenufa

Sung in Czech with English Supertitles.

Running time: Approximately 2 hours and 25 minutes including a 20 minute interval



Concessions: Group Rates

GLYNDEBOURNE ON TOUR ~ Pre-Performance Talks - Free

Tuesday 17th November ~ *Così fan Tutte* / Wednesday 18th November ~ *Falstaff* / Thursday 19th November ~ *Jenufa*

All talks to be held in the Town Close Room @ 6.15pm – 6.45pm

Discover more about Glyndebourne and the works being performed. Please note that places are limited and that this schedule is different to the dates that appeared in our last theatre brochure.



This event is free to ticket holders but you must book in advance through the Box Office.

NORWICH THEATRE ROYAL

EDUCATION UPDATE

September 2009 – June 2010

GLYNDEBOURNE ON TOUR – *THE MAGIC FLUTE*

Performance for Primary Schools

Wednesday 18th November at 11.00am @ The Norwich Playhouse

SOLD OUT

Glyndebourne presents a new adaptation of Mozart's *The Magic Flute* especially commissioned for a Primary School audience. Part pantomime and part fairytale, *The Magic Flute* conjures a cast of plucky heroes searching for truth and the enlightenment of the new day.

Using only Mozart's music, arranged by Dominic Harlan, with a new and intimate approach to the story by Brendan Murray, three Glyndebourne singers (accompanied by flute and piano) retell this bewitching tale with a little help from the audience.

Suitable for ages 6-11

The performance lasts approximately 1 hour with no interval.



For further information and bookings please contact james.hancox@glyndebourne.com.

GLYNDEBOURNE ON TOUR ~

Opera Experience – Secondary Schools

Falstaff workshop ~ Wednesday 18th November / *Jenufa* workshop ~ Thursday 19th November
Workshops to be held at Norwich High School for Girls from 2.00pm – 5.00pm

SOLD OUT

Opera Experience, for secondary schools, introduces young people to opera through a combination of engaging workshop activities and attending *Glyndebourne on Tour* performances. For a total price of £10 per student/teacher, students attend a workshop led by a team from Glyndebourne, and on the same day, attend an opera performance. The workshops are designed to allow the students to get the most out of the evening's opera. Teachers around the country appreciate not only the educational value, but also the sheer enjoyment experienced by their students at both workshop and performance. A teachers' pack will be available on each of the operas.

Please visit their website (www.glyndebourne.com/education/) for online resources and more information about the education work they do and to book a workshop for your class, or ring Glyndebourne Education on 01273 815 023.

NORWICH THEATRE ROYAL EDUCATION UPDATE

September 2009 – June 2010

PANTOMIME 2009


ROBIN HOOD the Panto ~

Tuesday 15th December 2009 – Sunday 17th January 2010

For the year 2009/2010 we're presenting the classic tale of *Robin Hood*.

Get ready to help *Robin Hood* overcome his trials and tribulations, thwart the wicked Sheriff of Nottingham, with help from friends and relatives, meet his future wife, and live happily ever after.

It's sure to hit the spot!!!!

 Concessions: Under 18s Special Price: Band A – D £1.50 off on certain performances, Group Rates on certain performances.

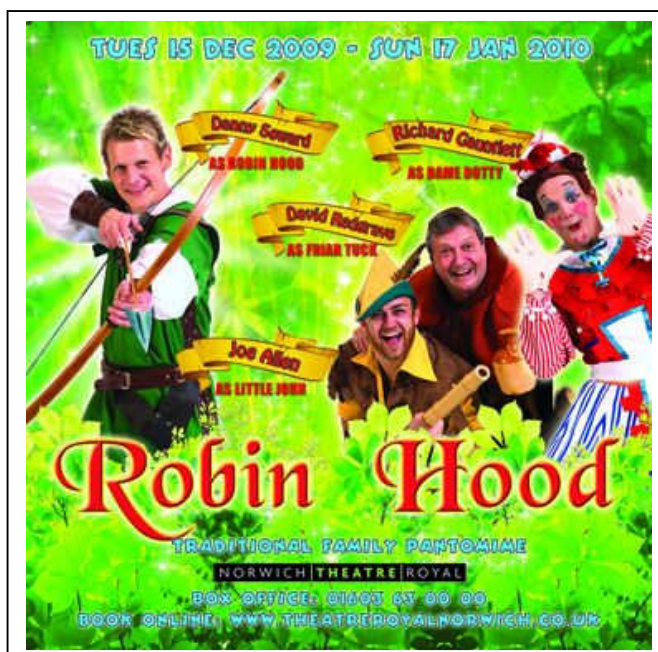
Please check brochure for full details



Signed performances: Saturday 16th January 2.30pm and 7.30pm (Signer: Jim Dunne)



Audio-Described Performance: Saturday 2nd January 2.30pm (by Mind's Eye)



ROBIN HOOD the Panto ~

Question & Answer Events

Thursday 7th and Thursday 14th January @ 1.30pm - 2.00pm, in the auditorium

Following on from the success of previous years these Q&A events are an opportunity for members of your party to ask any questions they may have for the cast of *Robin Hood*. In between the end of a 10.30am performance and this event your party may eat their packed lunches (they must provide their own packed lunches) in the auditorium while the actors catch their breath and the technical staff re-set the stage. On the day we will provide you with sufficient bin-liners to aid collection of all rubbish from the lunches. The actual event will usually last for half an hour.

 This event is free to ticket holders but you must book through the Education Department as places are limited.

NORWICH THEATRE ROYAL EDUCATION UPDATE

September 2009 – June 2010

EDUCATION INFORMATION

NORWICH THEATRE ROYAL BACKSTAGE TOURS ~

Norwich Theatre Royal now offers three separate backstage tours to visiting groups:

~**A Technical Tour** – looking at the theatre from a technical perspective

~**A General Tour** – looking at a mixture of historical, technical and social perspectives

~**A Historical Tour** – looking at Norwich Theatre Royal from a historical perspective (this includes a power-point presentation)

- The Technical and General tours normally last about an hour although this is mainly dependent upon the interest of the visiting group and can be shorter if required.
- The Historical Tour is longer than the other tours as it includes a power-point presentation. Approximate length is an hour to an hour and a half.
- In order to comply with Health and Safety regulations all tours are for a maximum of 25 people.
- All bookings to be made through the education department.
- All tours are dependent upon permission being granted from the visiting production company and Norwich Theatre Royal's technical department.
- Tours are available Monday – Friday only, show times dependent.
- If any of your group has mobility problems or listening impairments this information should be declared before the tour is finalised so the necessary arrangements for the tour can be made.
- Risk Assessments are available but pre-event risk assessment visits can also be arranged.
- Tours can be tailored to your needs. For example, if you are putting on a production at your school and would like to see how a professional theatre operates technically, then we can arrange for theatre technicians to demonstrate some of Norwich Theatre Royal's equipment.
- All tours cost £2.50 per person



To book a tour of the theatre, or for further information, please contact the Education Department.

NORWICH THEATRE ROYAL

EDUCATION UPDATE

September 2009 – June 2010

GUIDELINES FOR SCHOOL VISITS ~

Norwich Theatre Royal has especially designed guidelines for young children to make the most out of attending a production at Norwich Theatre Royal and these booklets are directly aimed at those who may not have experienced attending a production in a theatre before. Hard copies are available direct from the education department or download your copy from our website.

- How to attend a Pantomime booklet
- How to attend a Ballet booklet
- How to attend an Opera booklet
- How to attend a Drama booklet

RISK ASSESSMENTS ~

Whether you are bringing a school group to Norwich Theatre Royal to see a production, to attend a workshop or to have a Backstage tour of the theatre Norwich Theatre Royal has very clear risk assessments in place. Norwich Theatre Royal is also on the list of CF1 Providers as required by Norfolk County Council (<http://www.schools.norfolk.gov.uk/index.cfm?s=1&m=1376&p=1048,index>).

We currently have Risk Assessments for:

- Working with young persons
- Work experience
- Backstage tours
- Visiting groups in the audience
- General for visiting groups
- Young persons performing

If you require a Risk Assessment please contact the Education Department or download your copy from our website. Alternatively, you can arrange to come to Norwich Theatre Royal prior to your school visit and walk around the building with a Theatre Royal employee in order for you to create your own risk assessment.

NORWICH THEATRE ROYAL

EDUCATION UPDATE

September 2009 – June 2010

NORWICH EDUCATION NETWORK ~

Teacher's Free Event November

Friday 20th November 2.00pm – 7.00pm



On FRIDAY 20th November, the Norwich Education Network is offering a Free Teacher's Day at Norwich Cathedral's new Hostry Visitor and Education Centre (due to open this Autumn).

You are invited to drop in at any time between 2pm and 7pm to meet representatives from the Norwich Education Network* who will give details about their educational activities and services. You will also be able to take a tour of the beautiful Cathedral as well as being among the first to experience the new Hostry Centre (details over).

Throughout the day there will be a wide range of interactive workshops on offer designed to inspire both primary and secondary level teachers and you will be able to talk to all NEN Partners first hand about how we might support your needs in the future.

Meet the Norwich Theatre Royal education team to discover about:

- How to get the most out of a group visit to the theatre
- Group booking and discounts for schools and young people
- Theatre facilities, room hire and risk assessments
- Work Experience for Year 10 and above (backstage technical and front of house departments)
- Production affiliated workshops/resources and activities (in-school and off-site)
- Norfolk Schools Project (Key Stage 2)
- Backstage group tours of the theatre (General, technical, historical)
- History of the theatre and theatrical superstition presentations and resources
- Marketing/Business/Leisure and Tourism/Customer Care talks and resources (GCSE & A-Level)

All this, with pastries and refreshments too!

**Member organisations who will be present on the day:*

Castle Museum, Cinema City, Dragon Hall, Hungate Medieval Art and the Sainsbury Centre for Visual Arts, Inspire Discovery Centre, Norfolk and Norwich Millennium Library, Norfolk Record Office, Norwich Cathedral, Norwich Heritage and Economic Regeneration Trust (HEART), Norwich Playhouse, Norwich Puppet Theatre, Norwich Theatre Royal, The Cathedral of St John the Baptist, The Julian Centre



To discuss the activities on offer or for further information, please contact the Education Department.